

# BGSU Research<sup>+</sup>

*Impacting Communities*

Laura Regassa, Vice President for Research

Mark Fox, Assistant Vice President for Research & Innovation

Lisa Hanasono & Stephanie Wladkowski, Faculty Research Fellows

Directors: Alicia Swanson, Tyler Sims, Nicole Pedraza

# BGSU Research<sup>+</sup>

## *By the Numbers*

- 200 Submissions/Yr
- 100 New Awards/Yr
- \$65M in Active Awards



# BGSU Research<sup>+</sup>

## *Changing Federal Landscape*

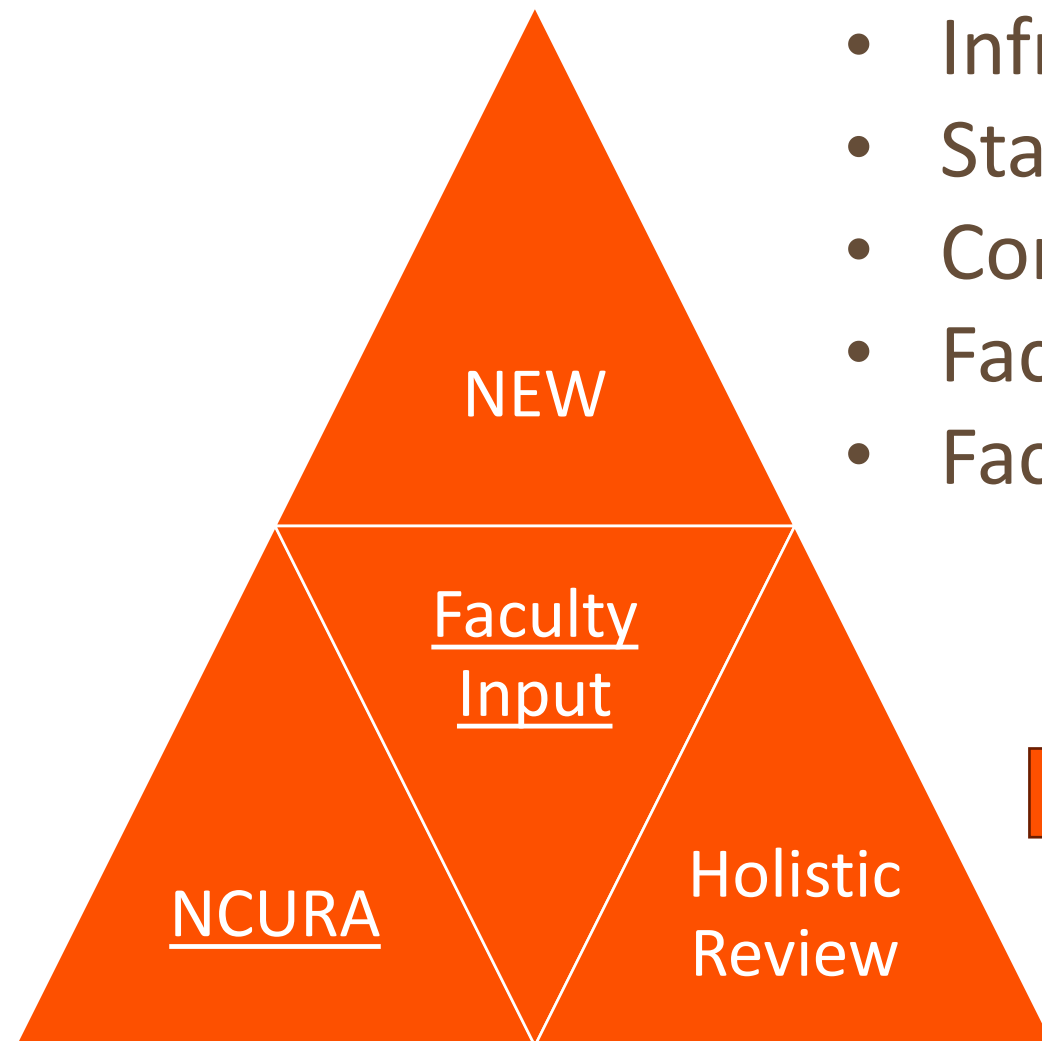
- **New Agency Priorities**
- **Budget shifts**
- **New Agency Policies**

**Key Research Areas (OSTP):**  
AI, nuclear energy, biotechnology, quantum information science, and semiconductors.

**Overarching Ideas:**  
Benefits to all, reproducibility, translation/application, workforce development

**NIH:**  
Chronic disease, brain, trainees, transformative technologies, healthy living, precision medicine

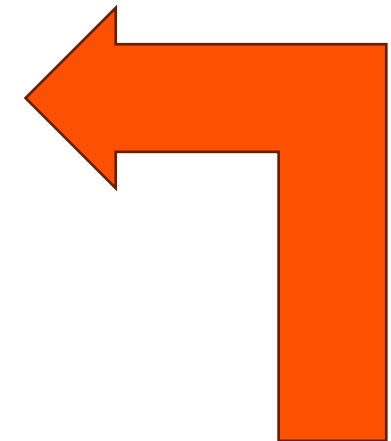
# How can we better support faculty?



- Infrastructure
- Staffing/Expertise
- Communication
- Faculty PD
- Faculty RD (e.g. internal grants)



- Clear institutional support
- Reduce barriers
- Professional Development
- Research Development



# How can we help you?

- [New website](#)
- New staff
- New streamlined processes
- Research Advocates
- Professional Development
- Research Development



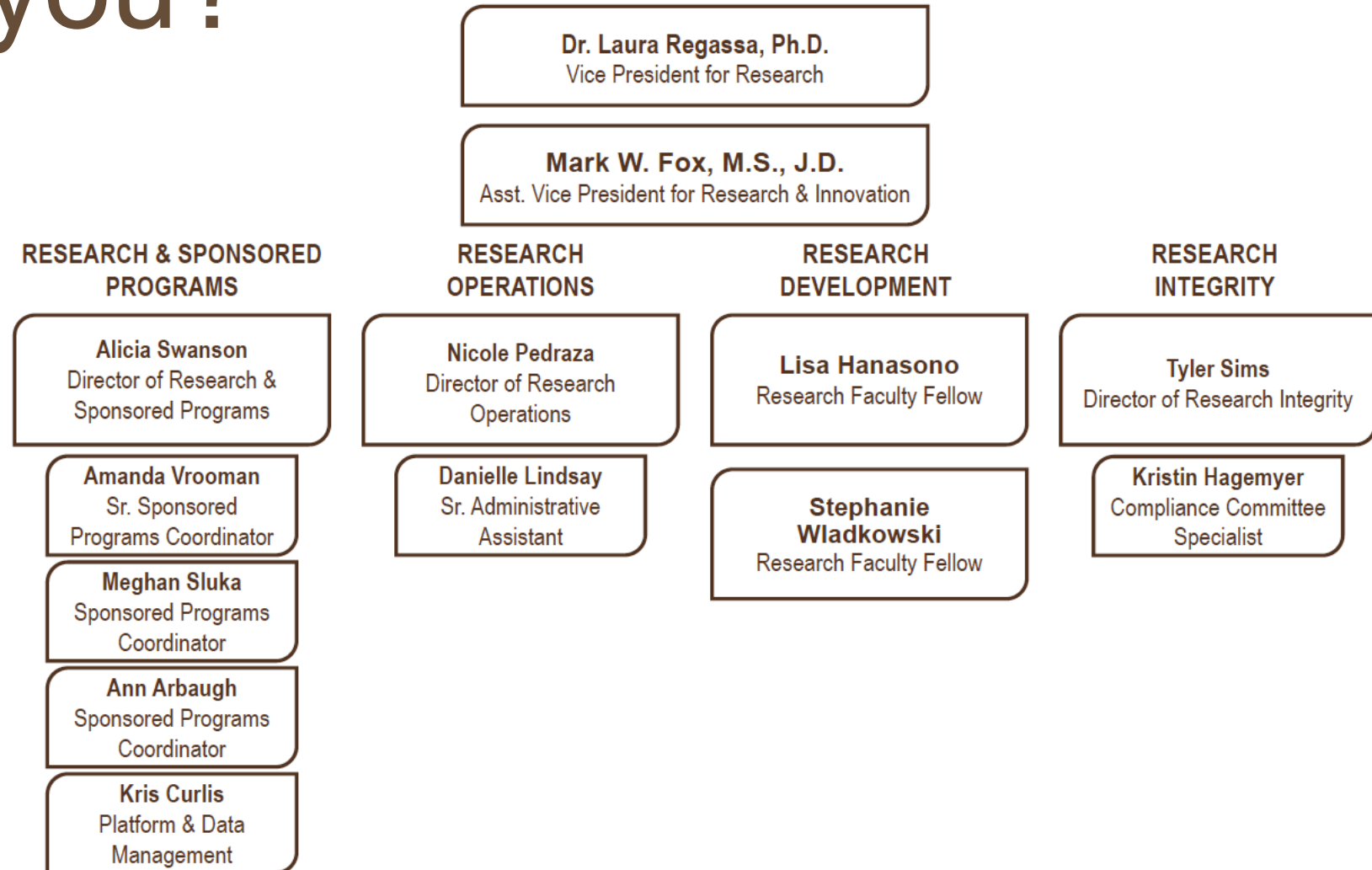
## Research with Community Impact

BGSU is a public university for the public good, and our mission relies on students and faculty who undertake more than 1,500 sponsored research, service, education and workforce development projects annually. The University's research impact can be seen across the region, state and beyond.

[BGSU Impact](#)

# How can we help you?

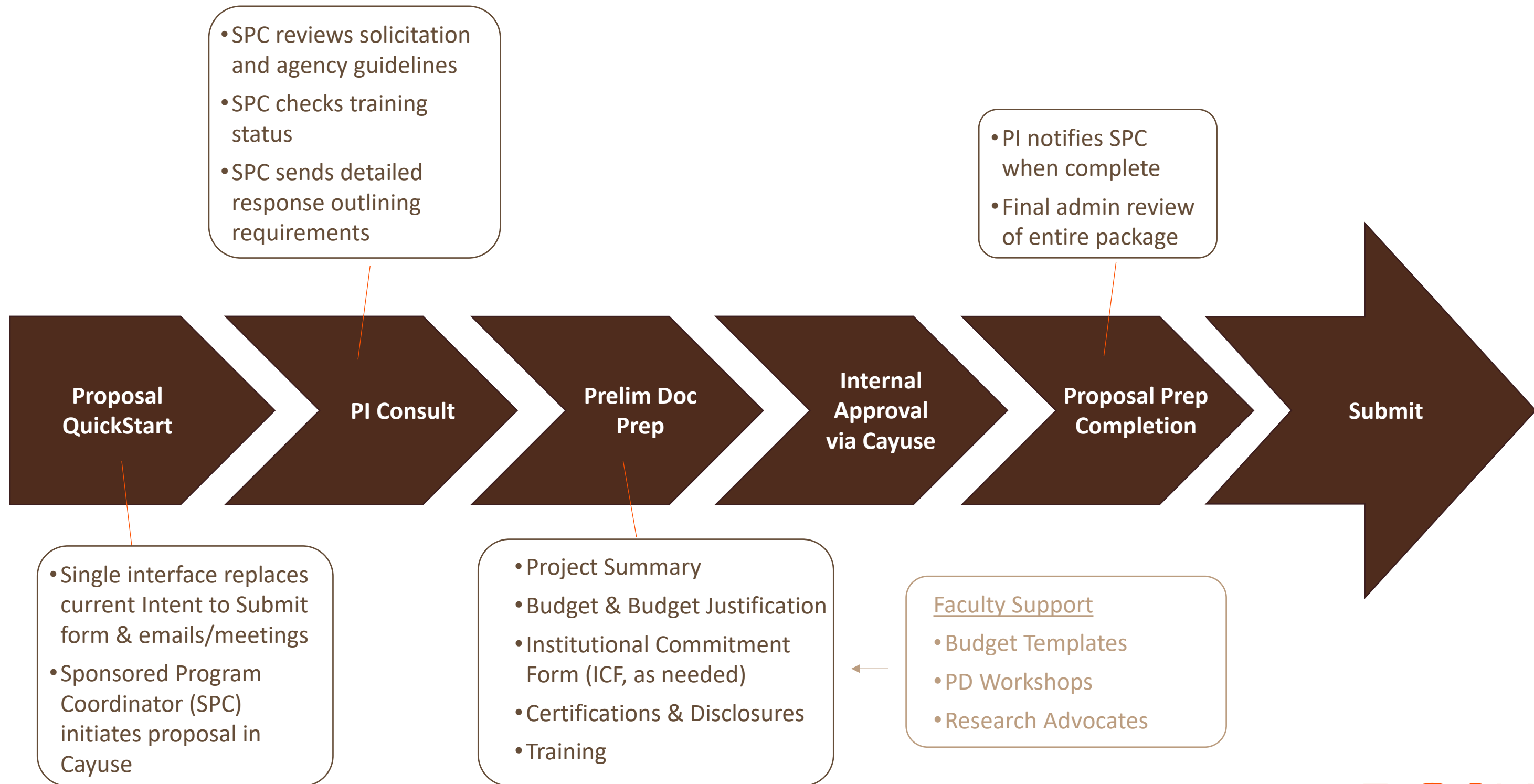
- New website
- [New staff](#)
- New streamlined processes
- Research Advocates
- Professional Development
- Research Development



# How can we help you?

- New website
- New staff
- New streamlined processes
- Research Advocates
- Professional Development
- Research Development





# How can we help you?

- New website
- New staff
- New streamlined processes
- Research Advocates
- Professional Development
- Research Development



**Lisa Hanasono, Ph.D.**

Position: Research Faculty Fellow

Phone: 419-372-3512

Email: [researchdevelopment@bgsu.edu](mailto:researchdevelopment@bgsu.edu)



**Stephanie Wladkowski**

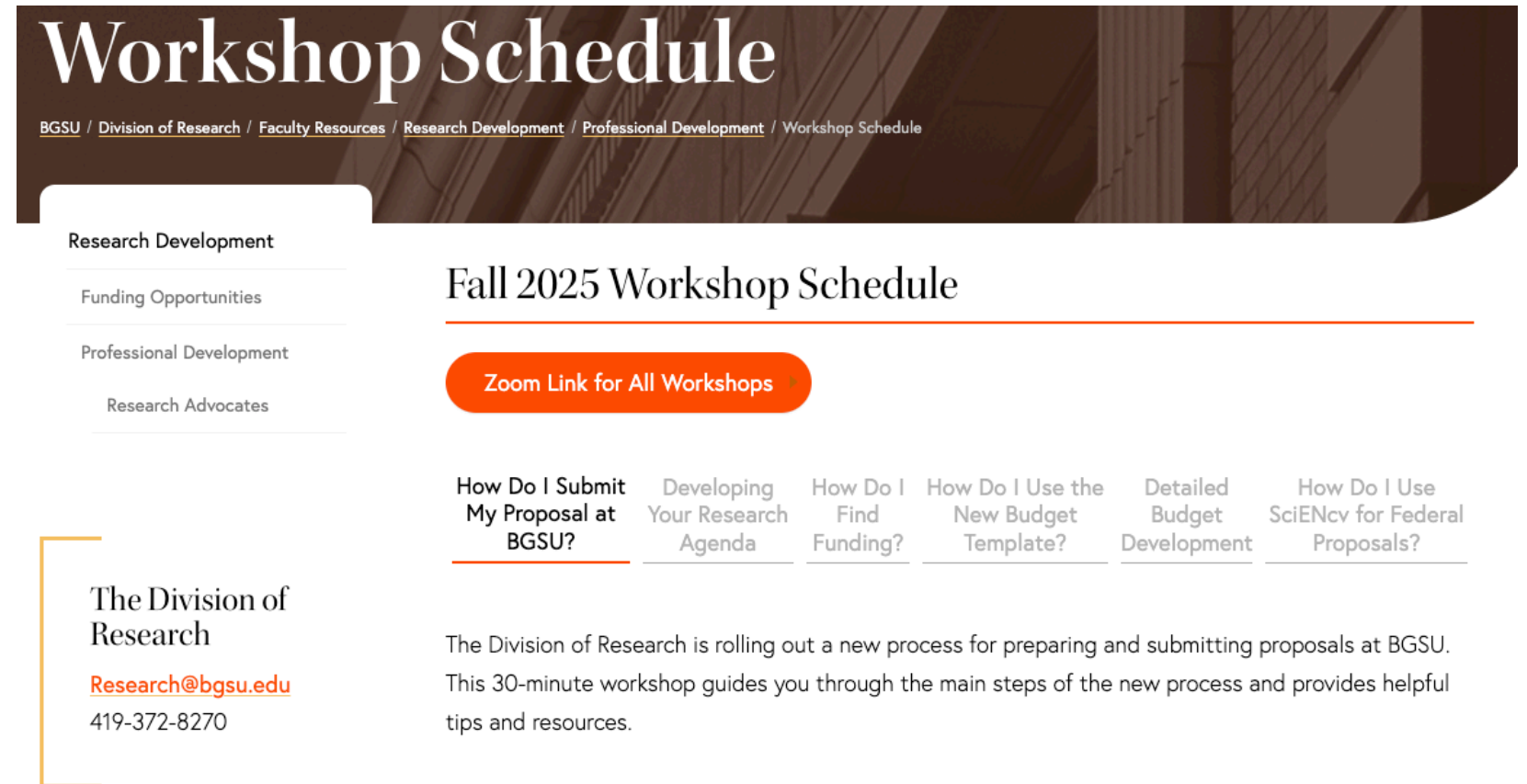
Position: Research Faculty Fellow

Phone: 419-372-8901

Email: [researchdevelopment@bgsu.edu](mailto:researchdevelopment@bgsu.edu)

# How can we help you?

- New website
- New staff
- New streamlined processes
- Research Advocates
- [Professional Development](#)
- Research Development



The screenshot shows the 'Workshop Schedule' page on the BGSU website. The header includes a breadcrumb trail: BGSU / Division of Research / Faculty Resources / Research Development / Professional Development / Workshop Schedule. A sidebar on the left lists navigation options: Research Development (selected), Funding Opportunities, Professional Development, and Research Advocates. The main content area is titled 'Fall 2025 Workshop Schedule' and features a prominent orange button labeled 'Zoom Link for All Workshops'. Below this, a row of links provides guidance on the proposal process: 'How Do I Submit My Proposal at BGSU?', 'Developing Your Research Agenda', 'How Do I Find Funding?', 'How Do I Use the New Budget Template?', 'Detailed Budget Development', and 'How Do I Use SciENCv for Federal Proposals?'. A text block explains that the Division of Research is rolling out a new 30-minute workshop process for preparing and submitting proposals, offering helpful tips and resources.

## Workshop Schedule

BGSU / Division of Research / Faculty Resources / Research Development / Professional Development / Workshop Schedule

- Research Development
- Funding Opportunities
- Professional Development
- Research Advocates

### Fall 2025 Workshop Schedule

[Zoom Link for All Workshops](#)

- [How Do I Submit My Proposal at BGSU?](#)
- [Developing Your Research Agenda](#)
- [How Do I Find Funding?](#)
- [How Do I Use the New Budget Template?](#)
- [Detailed Budget Development](#)
- [How Do I Use SciENCv for Federal Proposals?](#)

The Division of Research  
[Research@bgsu.edu](mailto:Research@bgsu.edu)  
419-372-8270

The Division of Research is rolling out a new process for preparing and submitting proposals at BGSU. This 30-minute workshop guides you through the main steps of the new process and provides helpful tips and resources.

# How can we help you?

- New website
- New staff
- New streamlined processes
- Research Advocates
- Professional Development
- [Research Development](#)

## Research *Forward* Internal Funding Opportunities

Application packets will be available in August 2025.

The Division of Research offers 4 types of *competitively* selected awards to advance the research and creative activities of Bargaining Unit Faculty Members (BUFM).

Please note that all applications will be submitted using an online form instead of email. To ensure a fair and prompt review process, late submissions will not be accepted.

If there are any questions, please email the Division of Research at [research@bgsu.edu](mailto:research@bgsu.edu).

Propel Travel Grants

Elevate Grants

Catalyst Grants

Accelerator Grants

Faculty Research Awards

B

# How can you help us?

- Allow sufficient time for submission – timely QuickStart Survey
- Attend PD workshops
- Read documents from Sponsored Programs Coordinator (SPC)
- Respond to Cayuse “task emails”
- Be kind
- Provide feedback

# BGSU Research<sup>+</sup>

*Impacting Communities*

## Questions?

[Research@bgsu.edu](mailto:Research@bgsu.edu)

[bgsu.edu/research](http://bgsu.edu/research)

[QuickStart Survey](#)

