

# 2012

## State of the Region Address

---

Michael C. Carroll, Ph.D.  
Center for Regional Development  
Bowling Green State University

# Outline

---

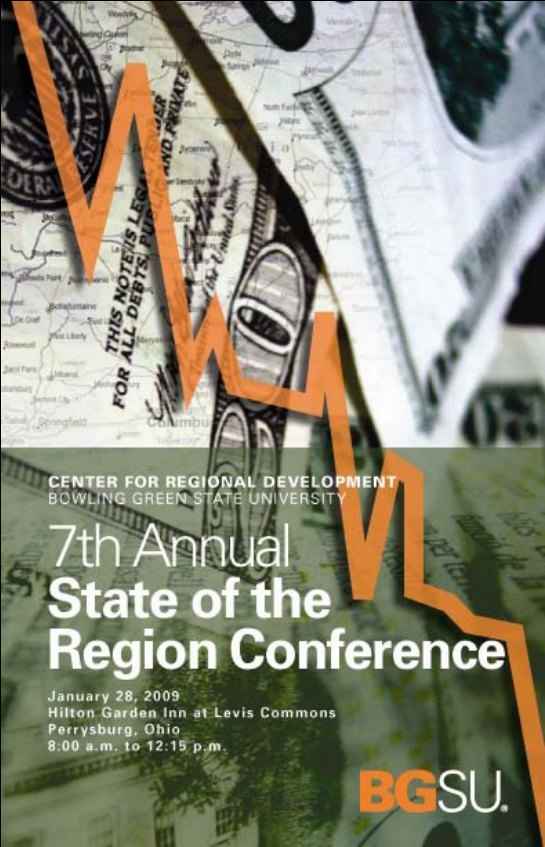
- How we have changed
- Changing employment trends
- Temporal view of unemployment
- Implication of layoff events
- Rural vs. urban change
- View to the future

# How We Have Changed

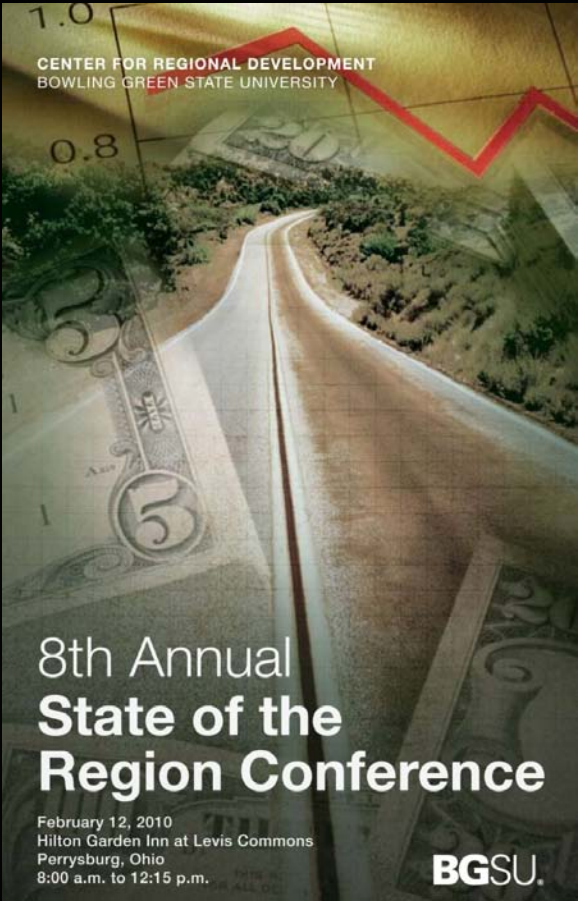
---



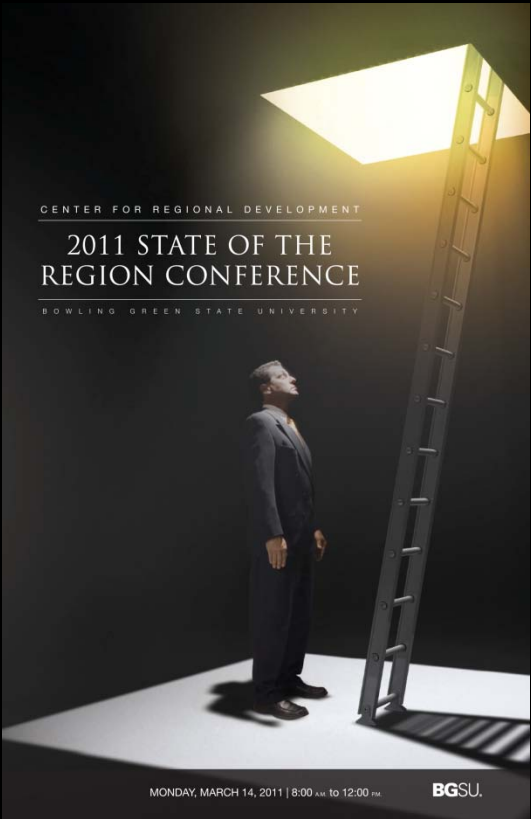
2009  
Economic Crisis in a Global World



2010  
Road to Recovery?



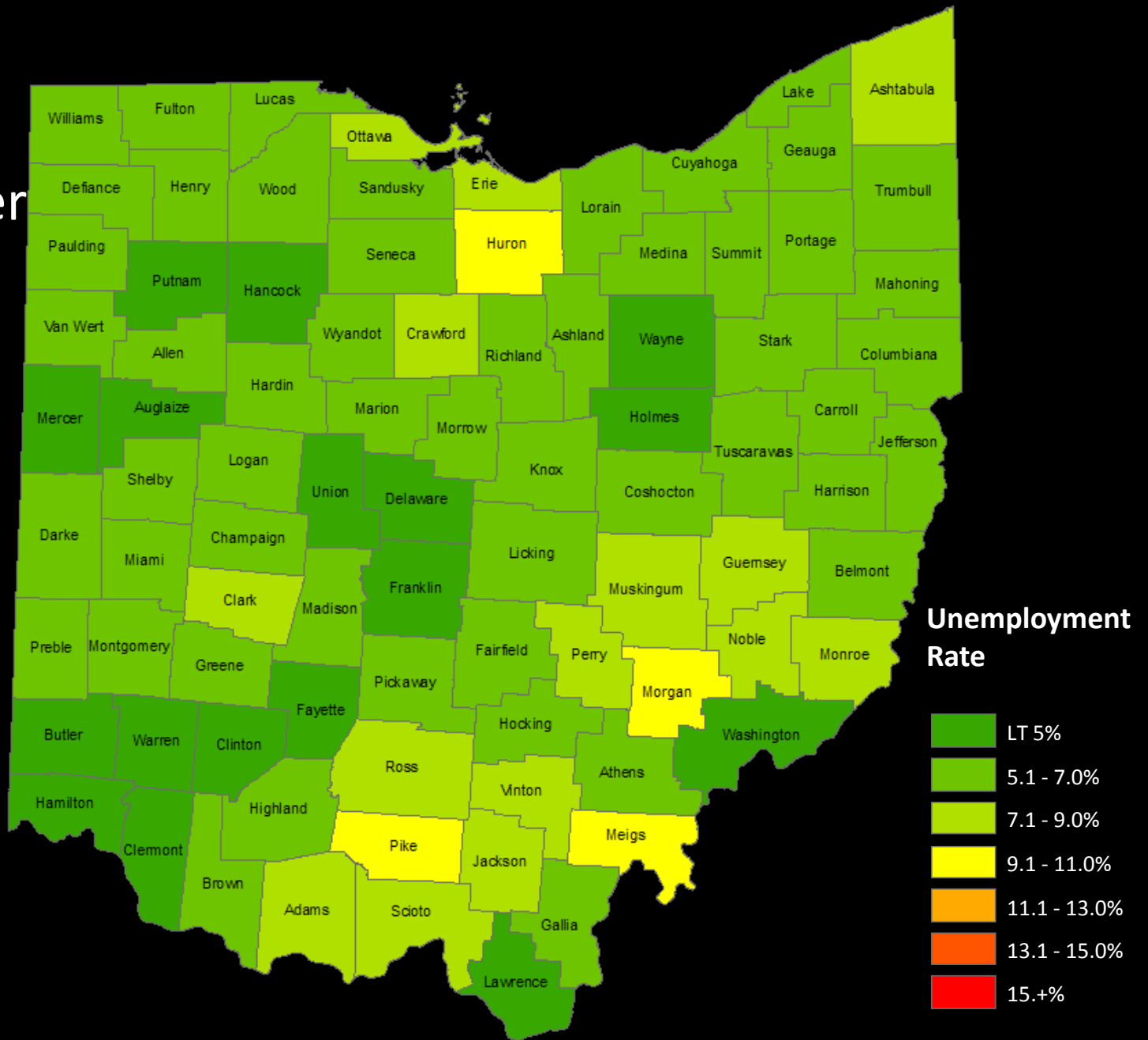
2011  
Upside of a Downturn



# Toledo MSA Employment Change 2007-2009

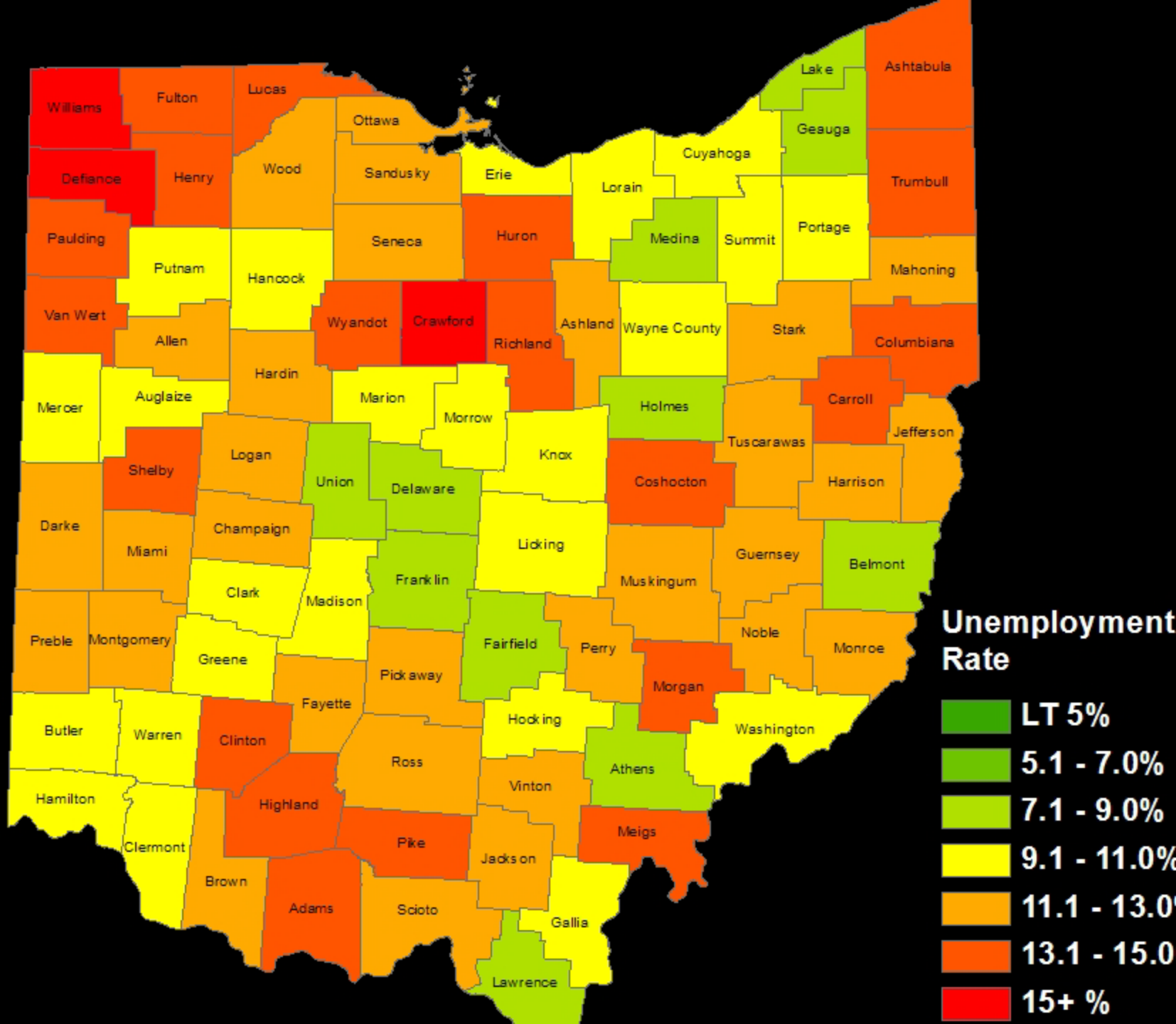
Sector	Employment, 2007	Employment, 2009	Employment Change	Percent Growth, 2007 - 2009
Education and Health Services	76,263	76,634	371	0.5
Trade, Transportation, and Utilities	65,714	58,975	-6,739	-10.3
Manufacturing	47,835	36,274	-11,561	-24.2
Leisure and Hospitality	32,927	31,192	-1,735	-5.3
Professional and Business Services	34,060	29,987	-4,073	-12.0
Construction	14,700	11,423	-3,277	-22.3
Financial Activities	12,123	10,852	-1,271	-10.5
Public Administration	10,270	10,150	-120	-1.2
Other Services	10,926	9,737	-1,189	-10.9
Information	4,001	3,395	-606	-15.1
Natural Resources and Mining	1,360	1,300	-60	-4.4
	<b>310,179</b>	<b>279,919</b>	<b>-30,260</b>	

# December 2007





June  
2009



# Toledo MSA Employment Change 2009-2010

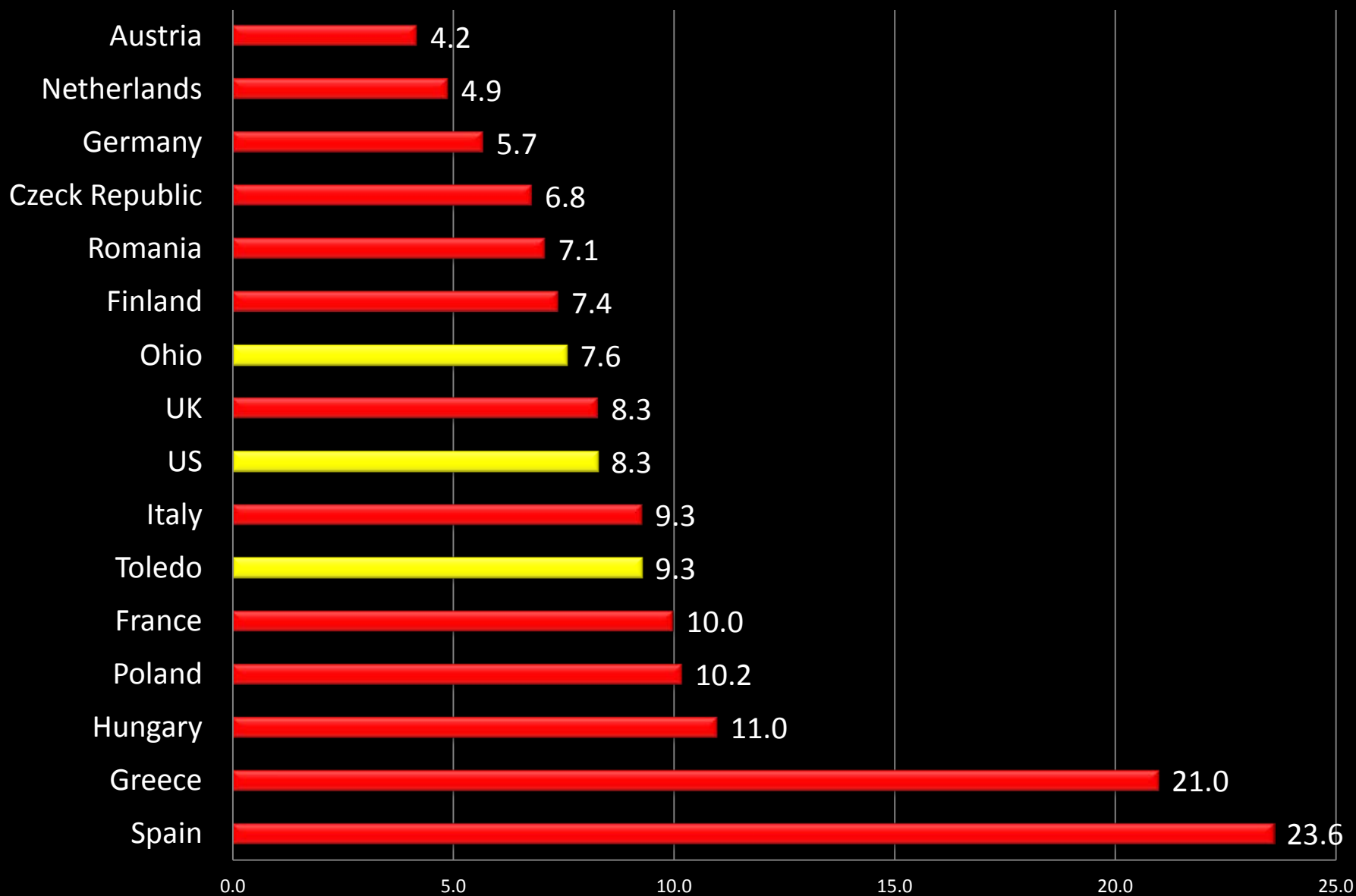
Sector	Employment, 2009	Employment, 2010	Employment Change	Percent Growth, 2009 - 2010
Education and Health Services	76,634	76,484	-150	-0.2
Trade, Transportation, and Utilities	58,975	57,643	-1,332	-2.3
Manufacturing	36,274	37,688	1,414	3.9
Leisure and Hospitality	31,192	31,499	307	1.0
Professional and Business Services	29,987	31,418	1,431	4.8
Construction	11,423	10,802	-621	-5.4
Public Administration	10,150	10,216	66	0.7
Financial Activities	10,852	10,174	-678	-6.2
Other Services	9,737	9,094	-643	-6.6
Information	3,395	3,353	-42	-1.2
Natural Resources and Mining	1,300	1,253	-47	-3.6
	<b>279,919</b>	<b>279,624</b>	<b>-295</b>	



# Dow Jones Industrials 2009-2012



# Unemployment Rate for Selected Areas



# Unemployment Rates for Selected Counties

	June 2009	February 2012	Change
Allan County	11.2%	9.2%	2.0%
Lucas County	13.6%	9.1%	4.5%
Wood County	12.3%	8.0%	4.3%
Fulton County	14.8%	10.0%	4.8%
Williams County	16.7%	9.4%	7.3%
Ottawa County	12.8%	14.3%	-1.5%
Erie County	10.5%	9.4%	1.1%

Ohio Underemployment rate is 15.2% for third quarter 2011

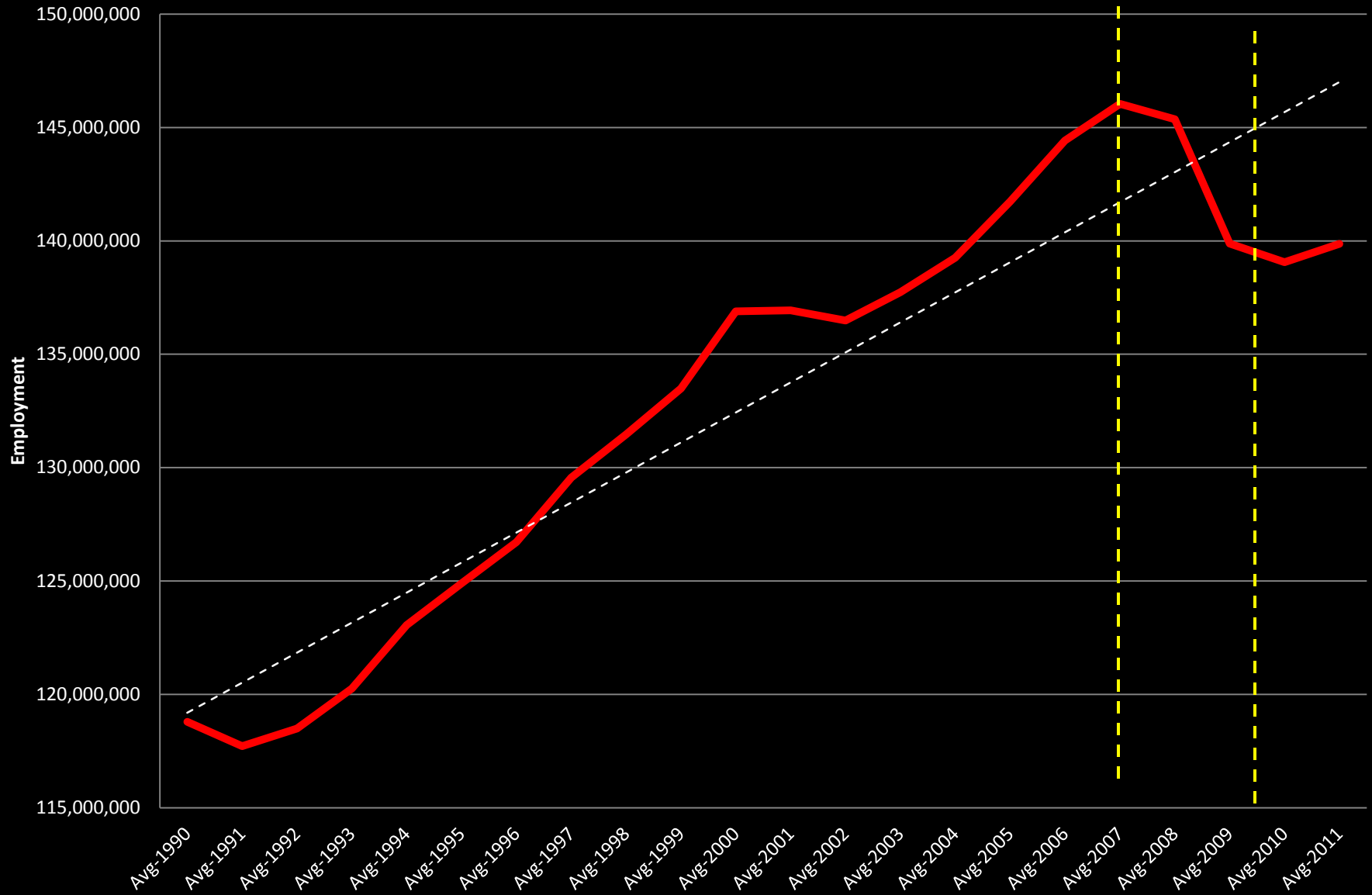
Michigan Underemployment rate is 19% for third quarter 2011

# Changing Employment Trends

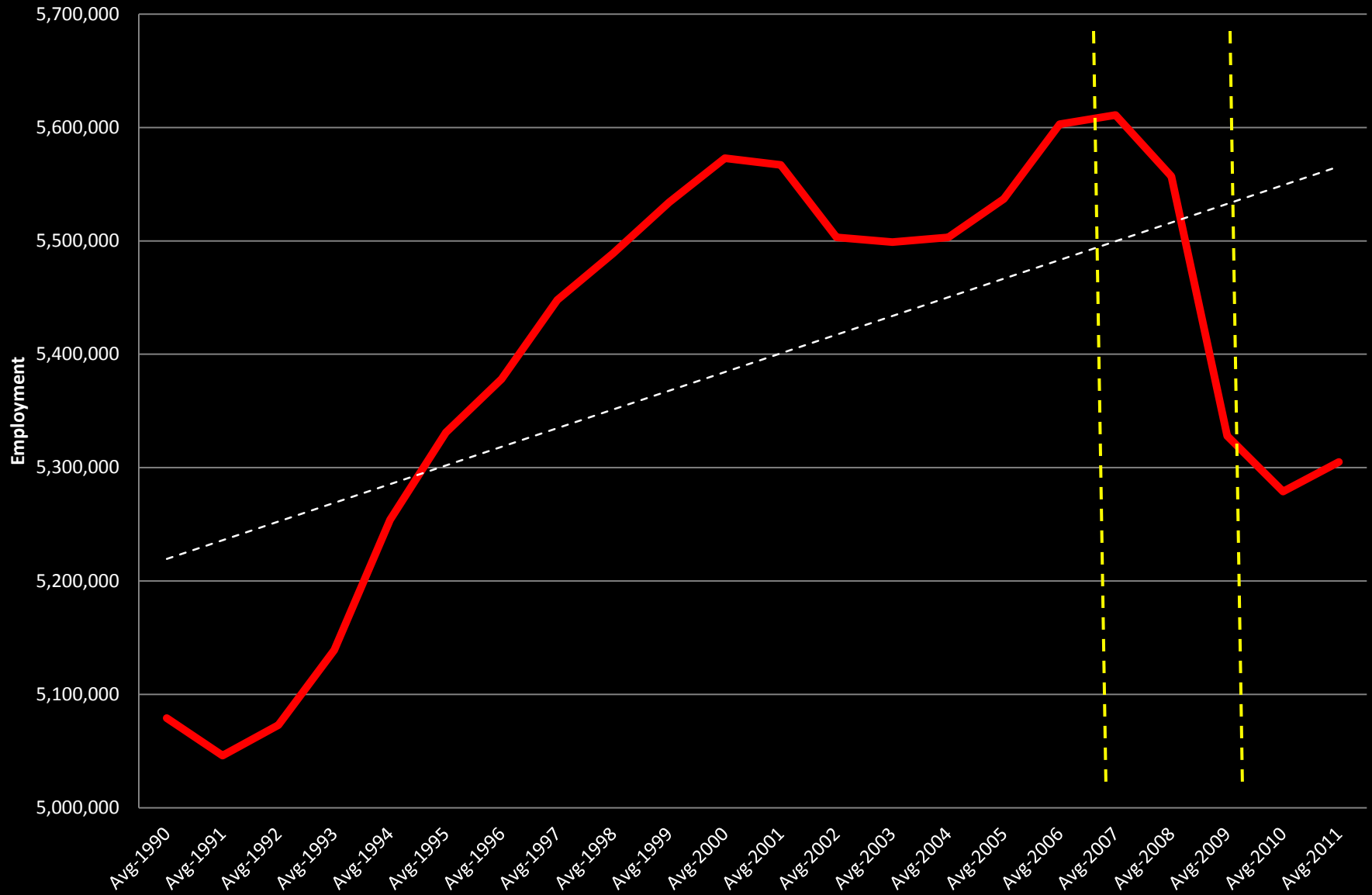
---



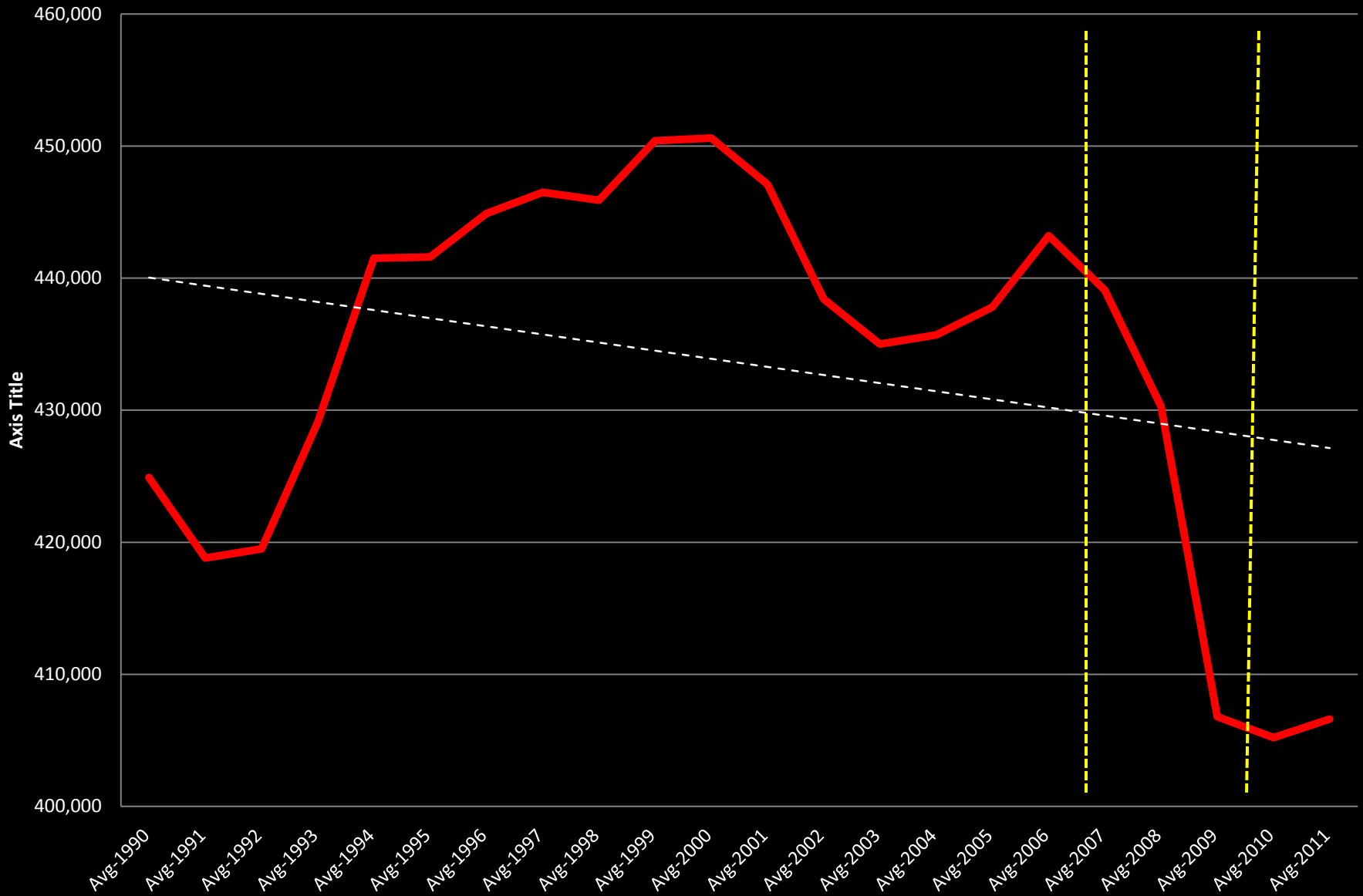
# U.S. Employment from 1990



# Ohio Employment from 1990

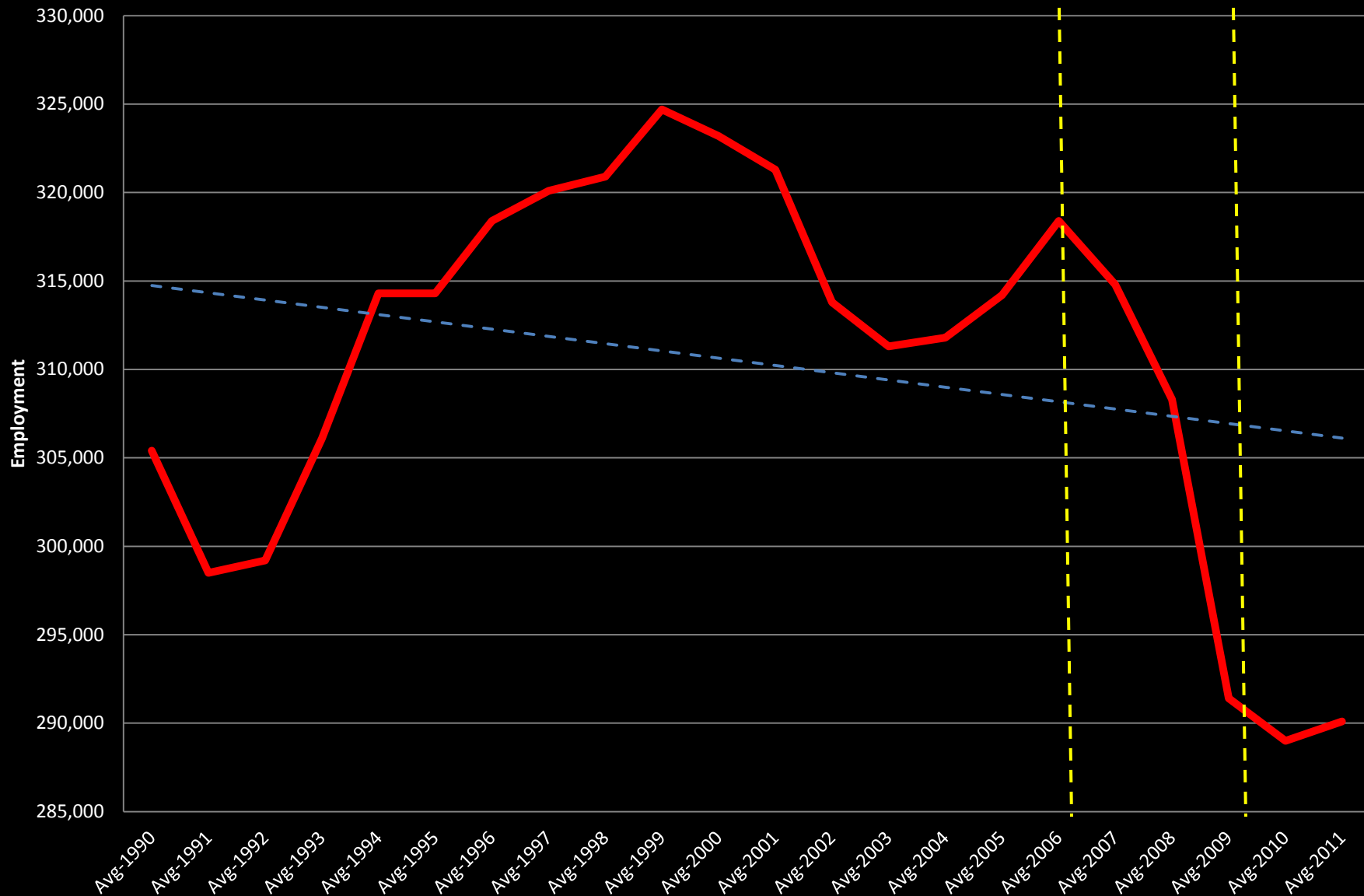


# Northwest Ohio Region 2

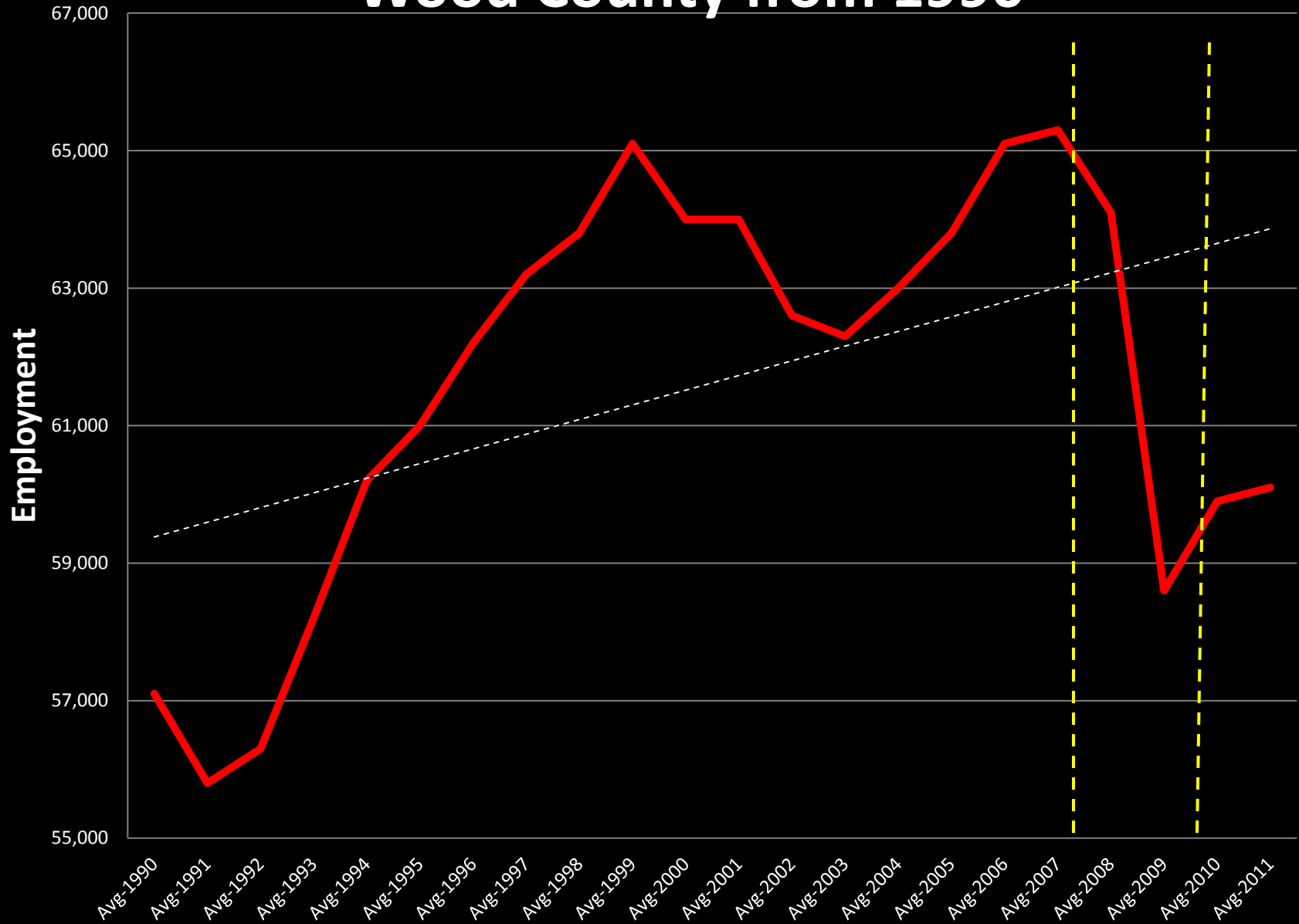




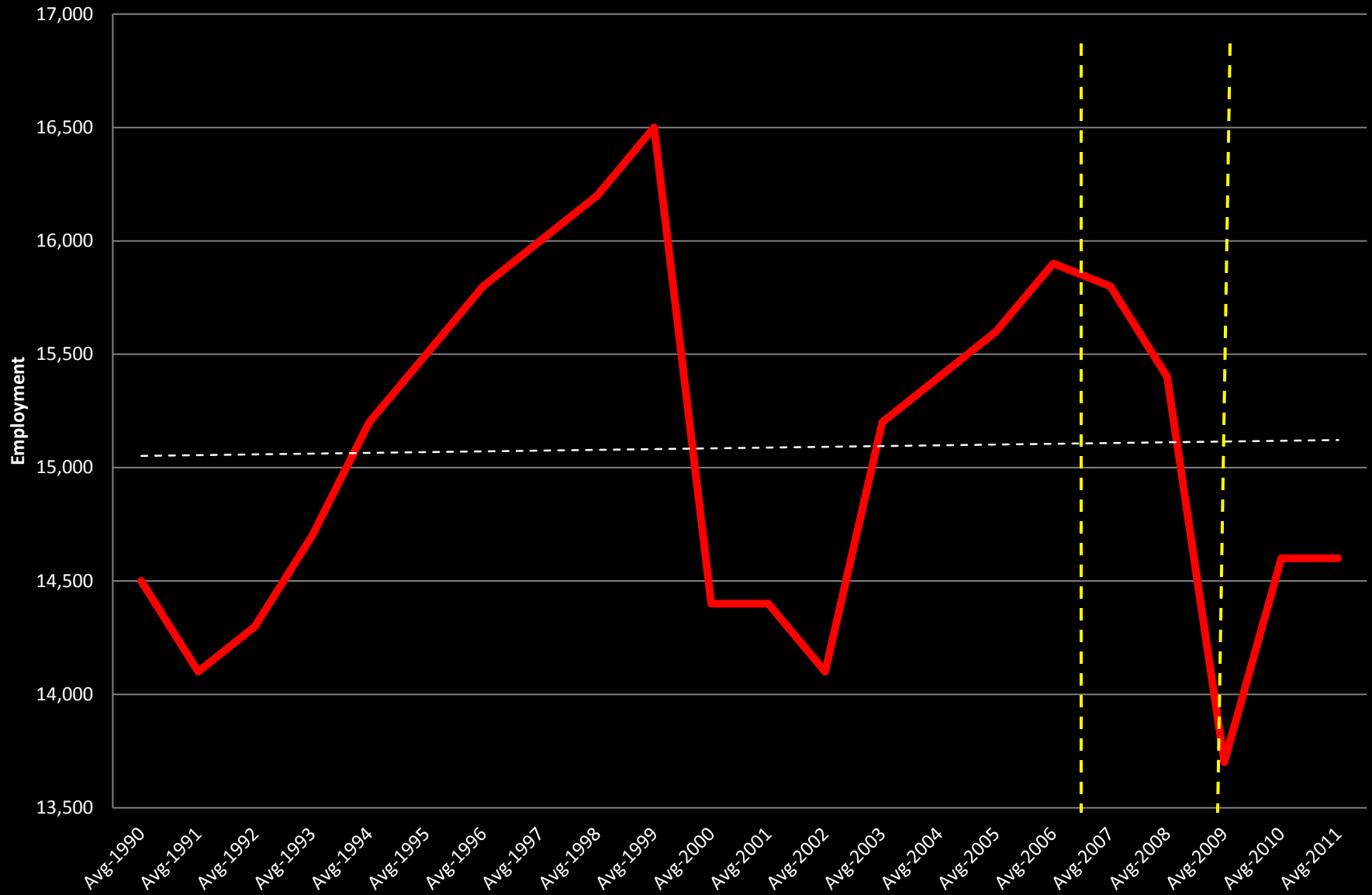
# Toledo MSA from 1990



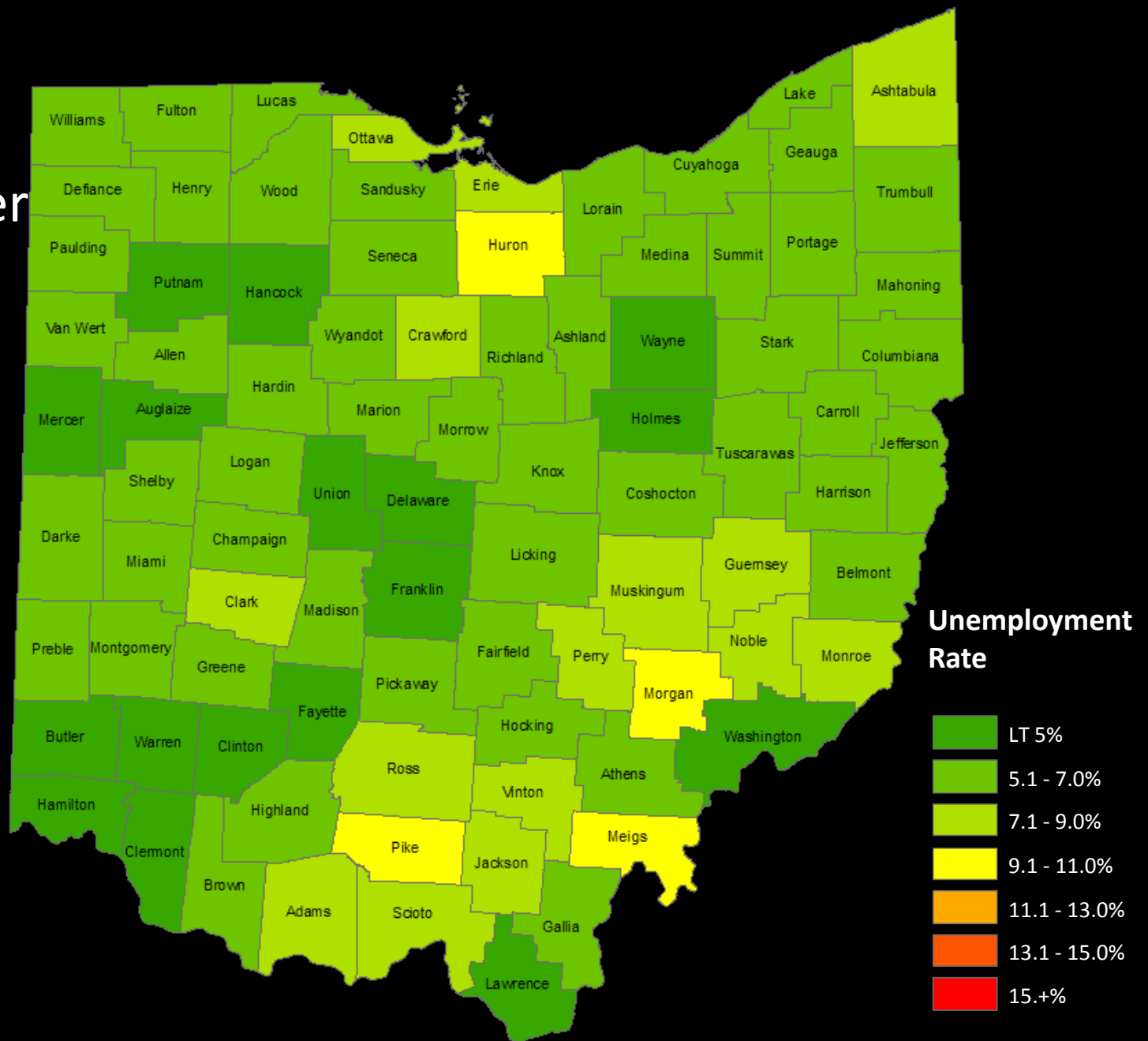
# Wood County from 1990



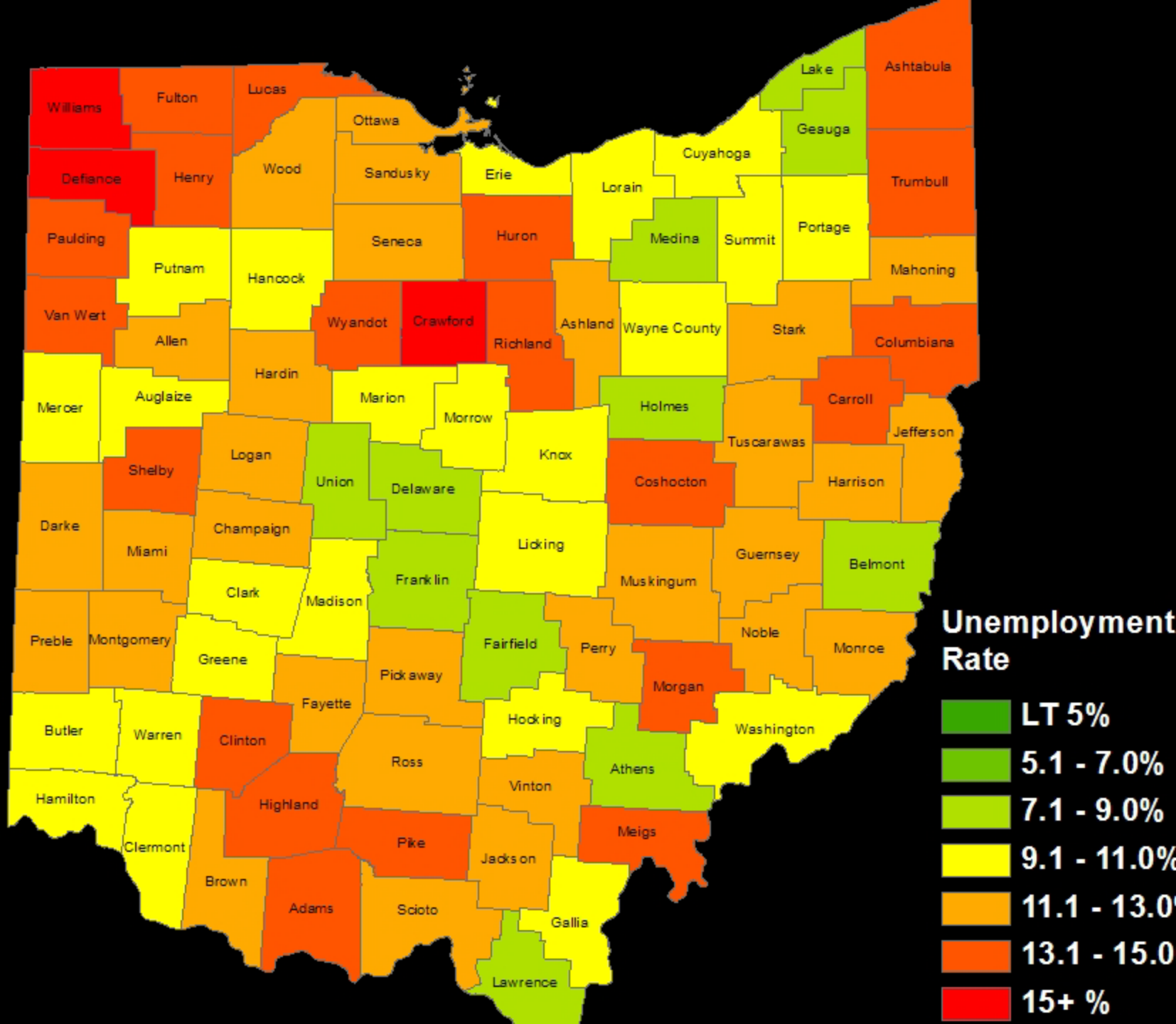
# Bowling Green from 1990



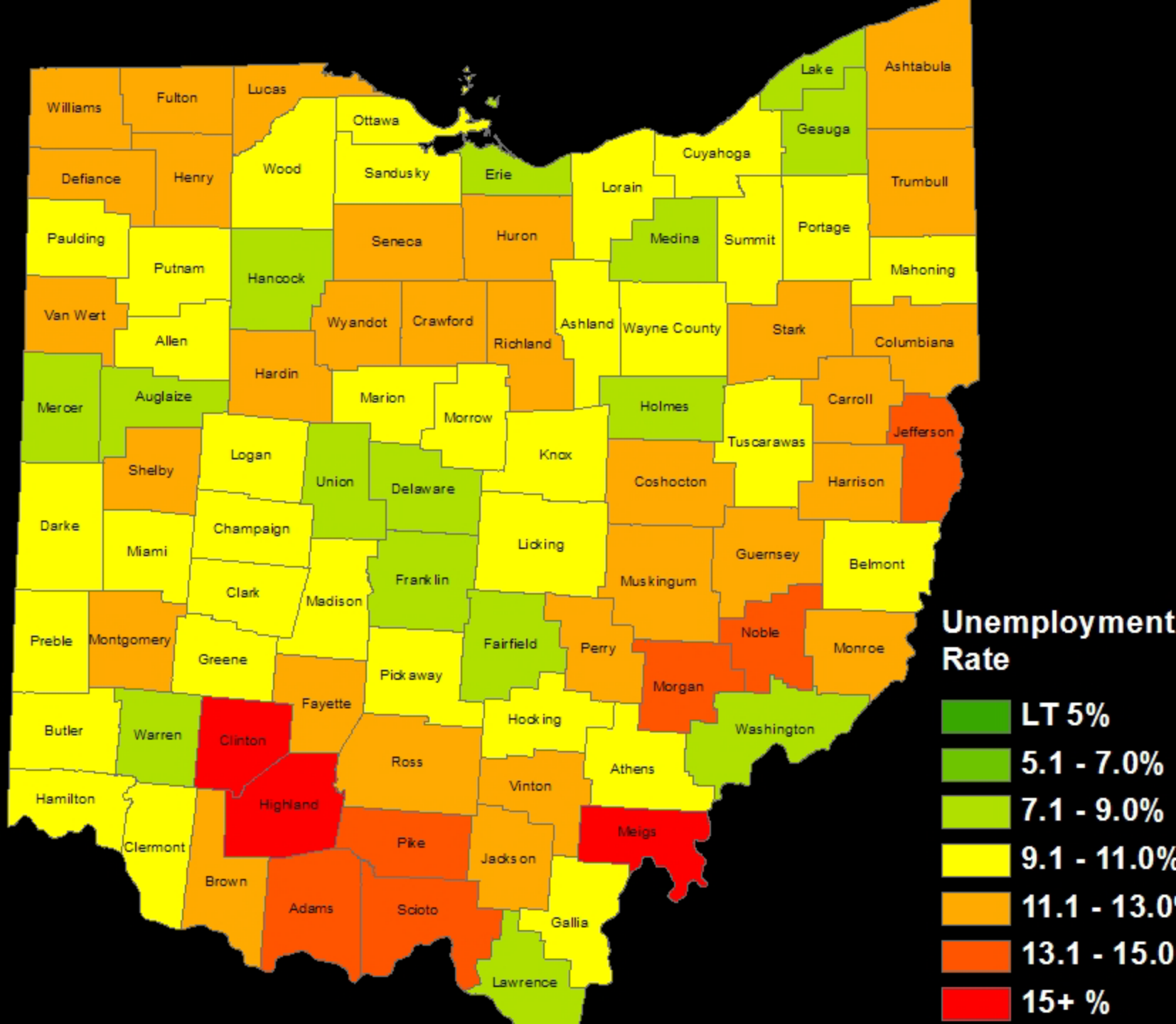
# December 2007



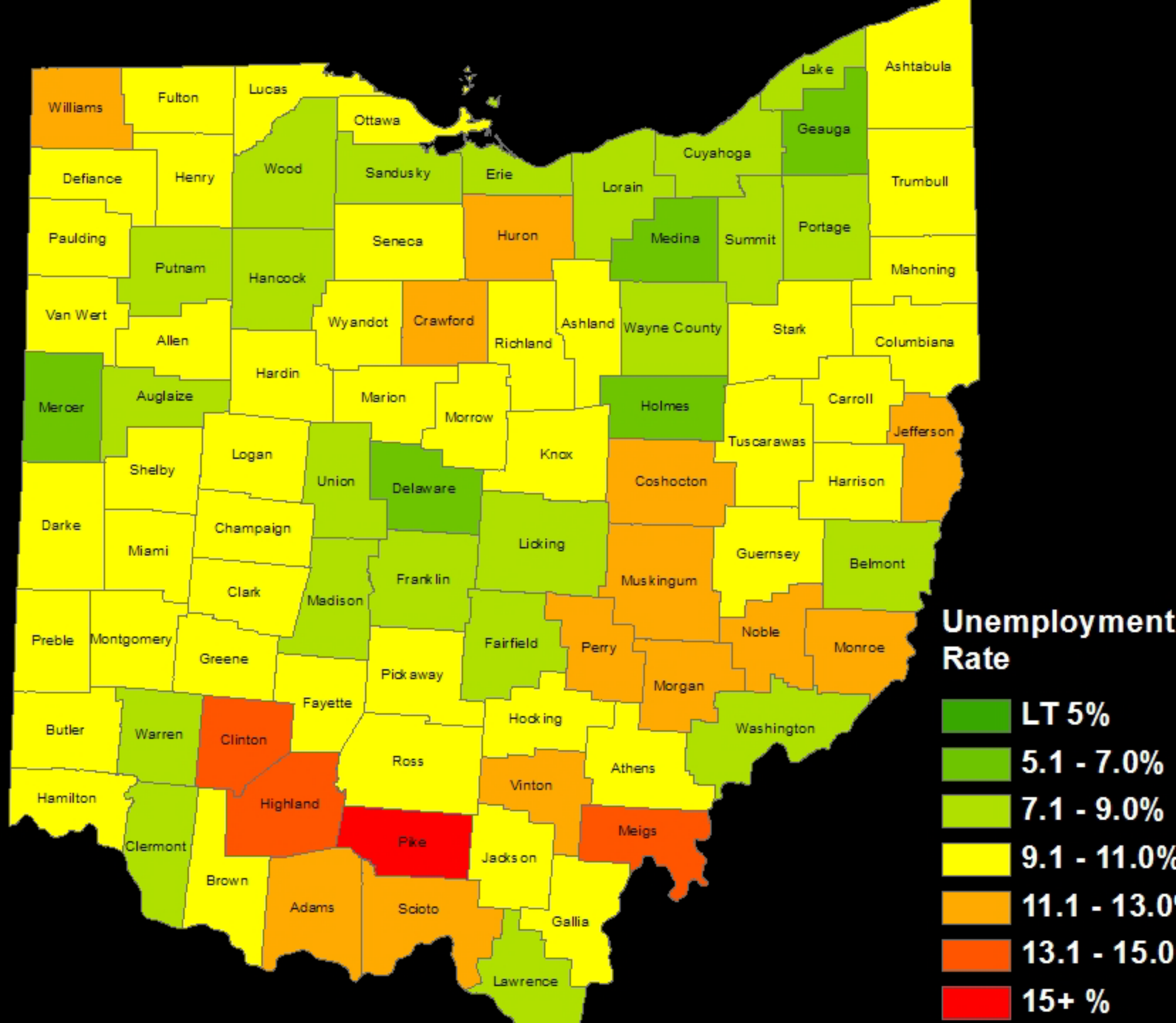
June  
2009



June  
2010

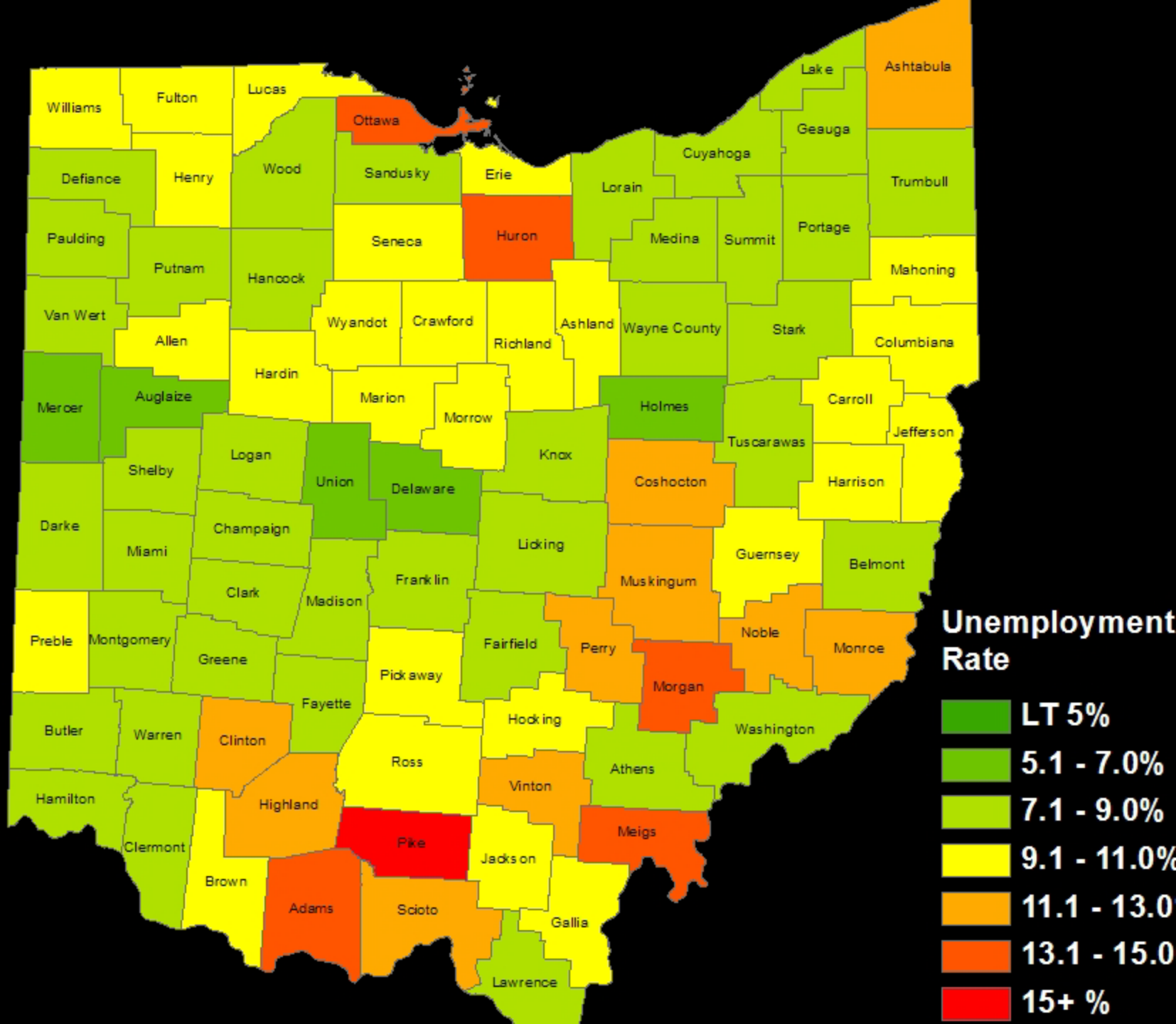


June  
2011





February  
2012



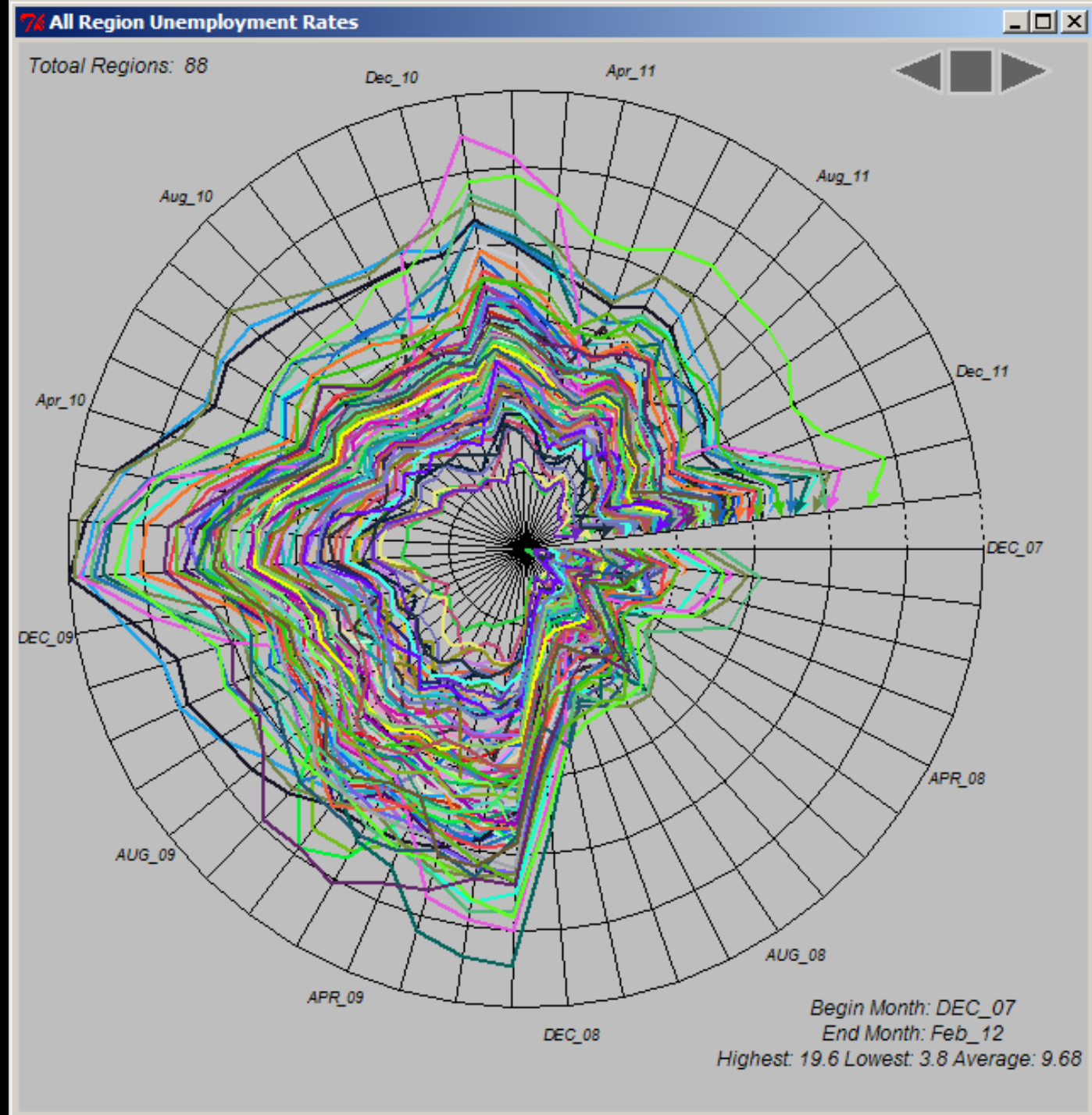
# Temporal View of Unemployment Changes

---



# All Ohio Counties

Rate Clock  
CRD Spatial Toolbox



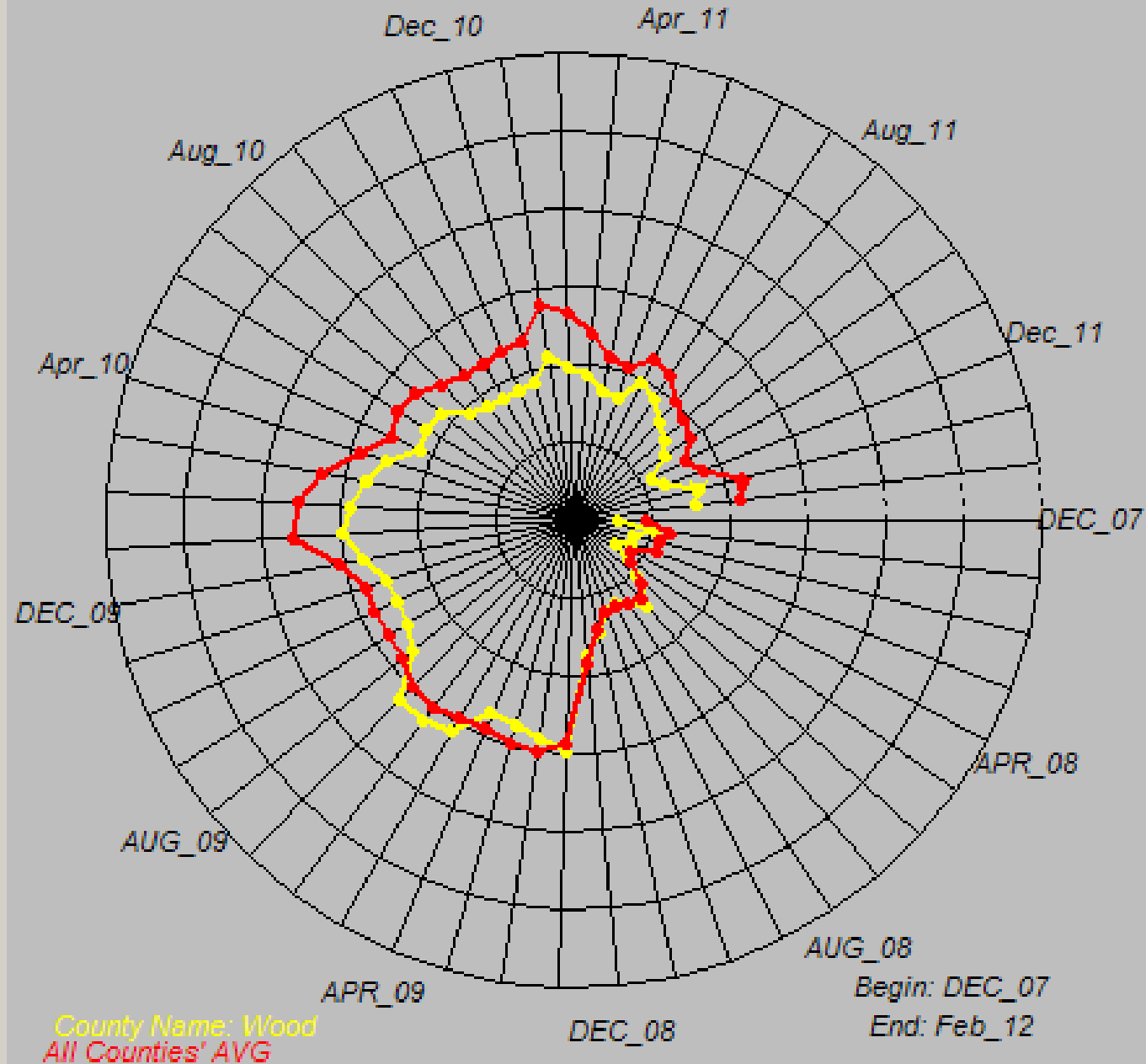
# Wood County

Rate Clock  
CRD Spatial Toolbox



74 County: Wood

[Click Nodes to See Data](#)



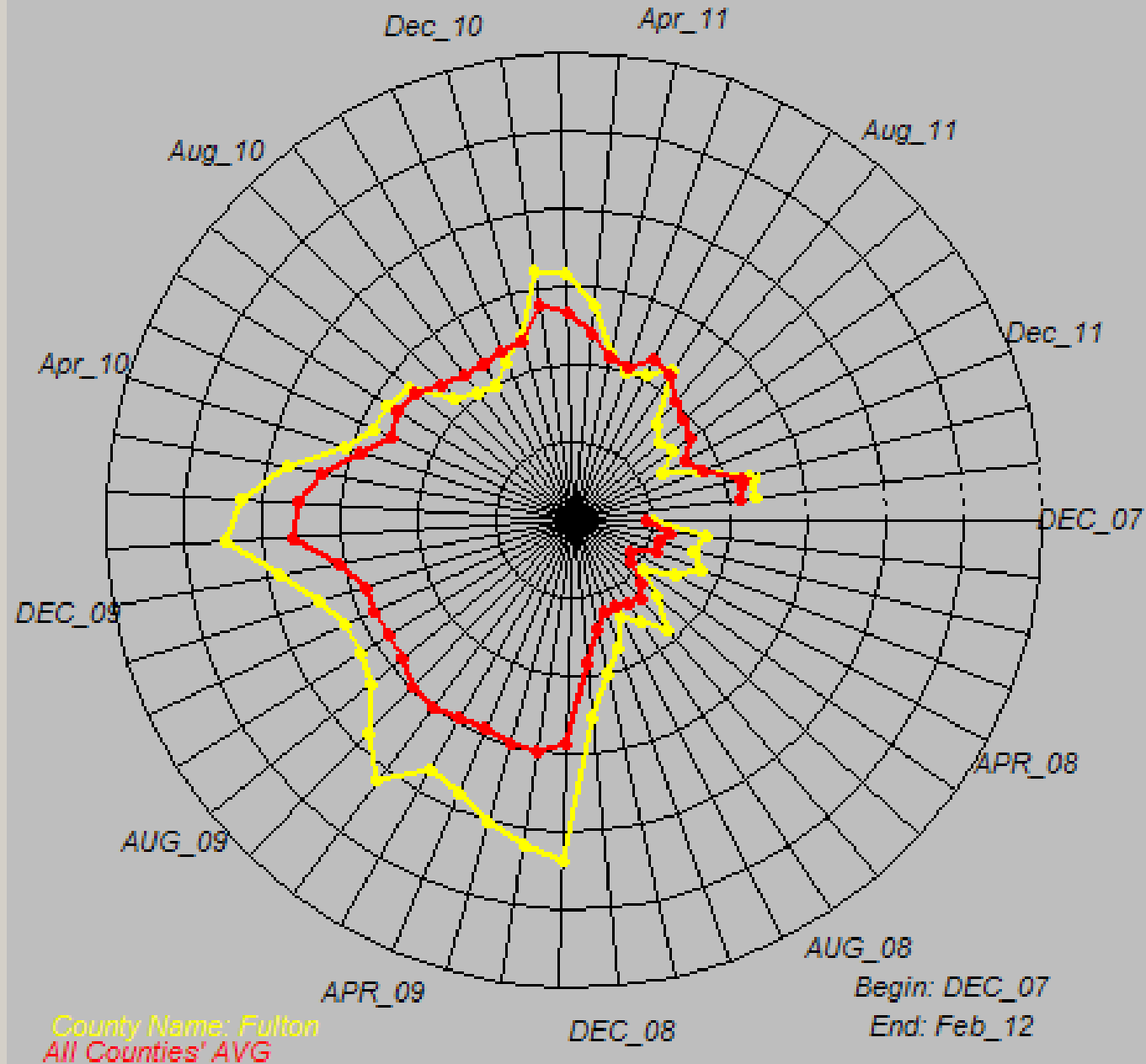
# Fulton County

Rate Clock  
CRD Spatial Toolbox



74 County: Fulton

[Click Nodes to See Data](#)



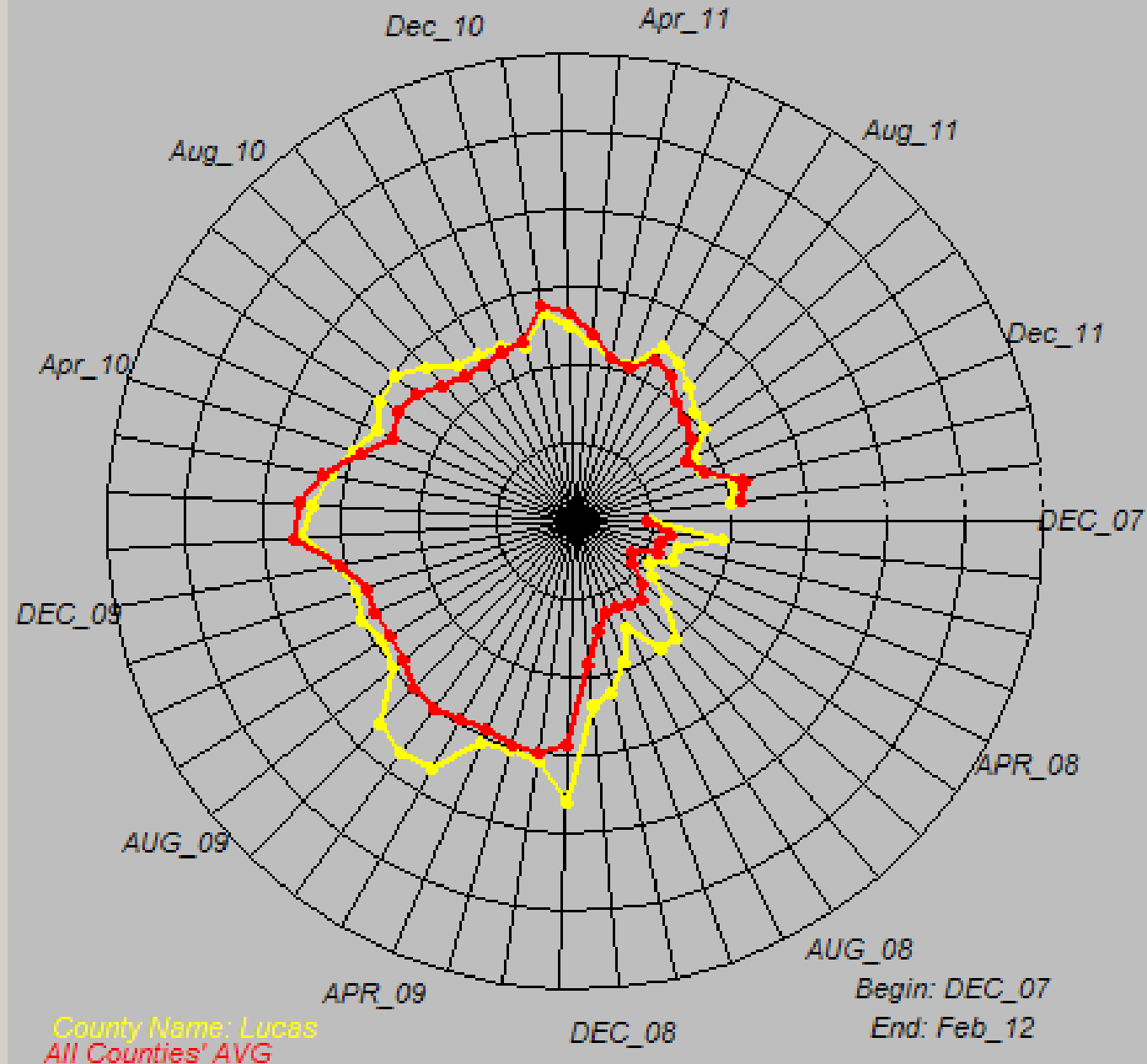
# Lucas County

Rate Clock  
CRD Spatial Toolbox



74 County: Lucas

[Click Nodes to See Data](#)



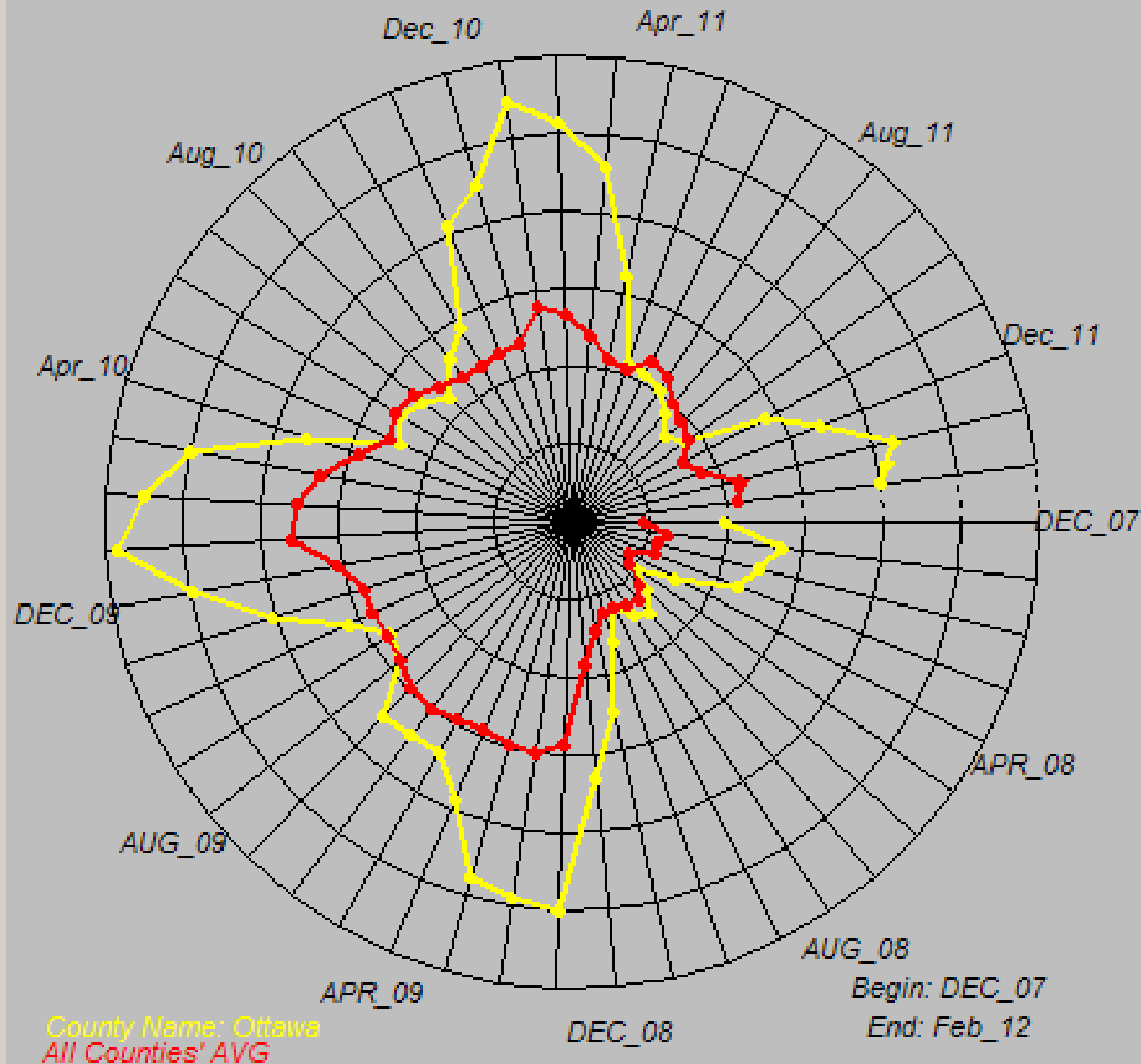
# Ottawa County

Rate Clock  
CRD Spatial Toolbox



74 County: Ottawa

[Click Nodes to See Data](#)

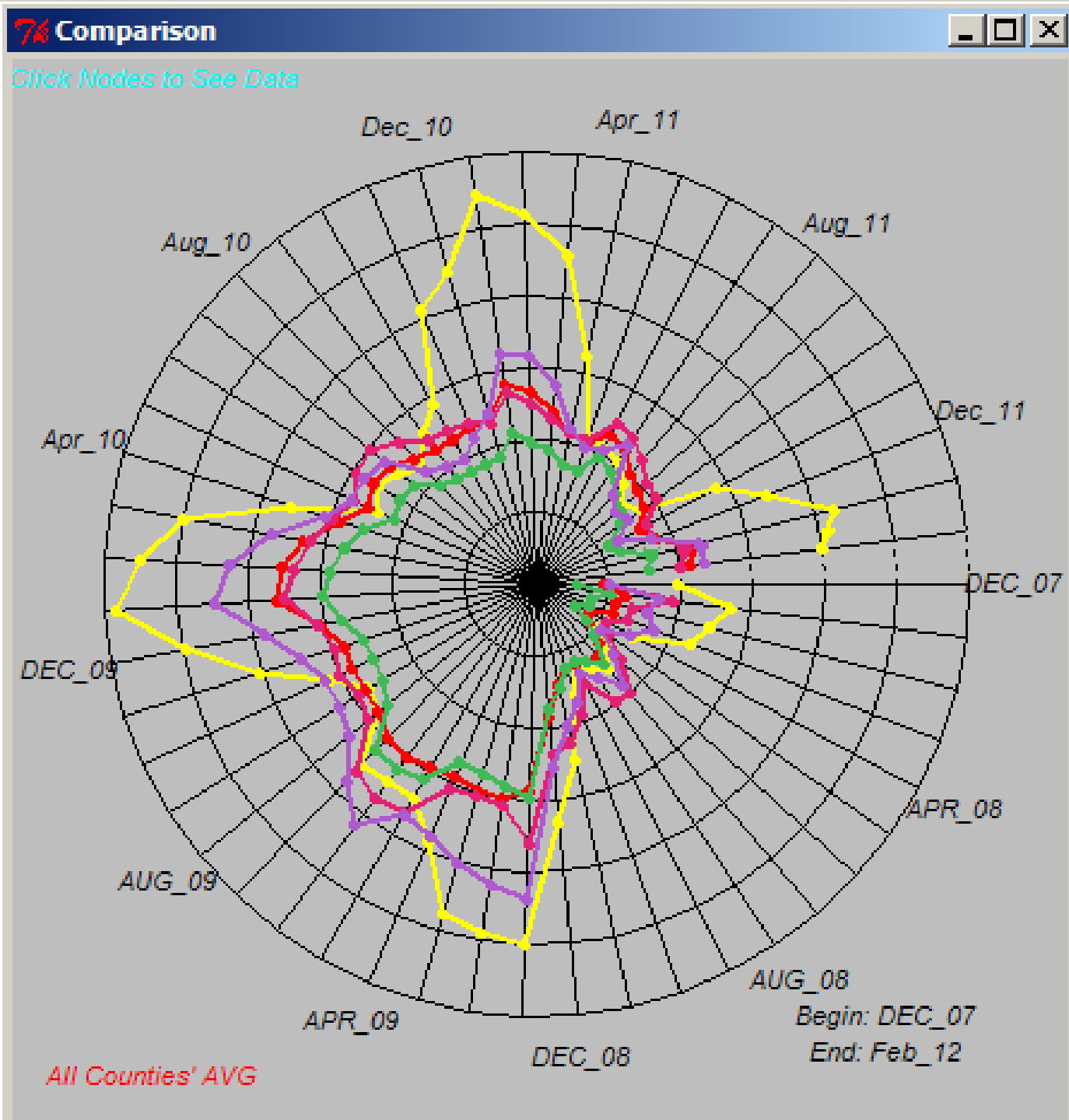




# Toledo MSA

Fulton  
Lucas  
Ottawa  
Wood

Rate Clock  
CRD Spatial Toolbox

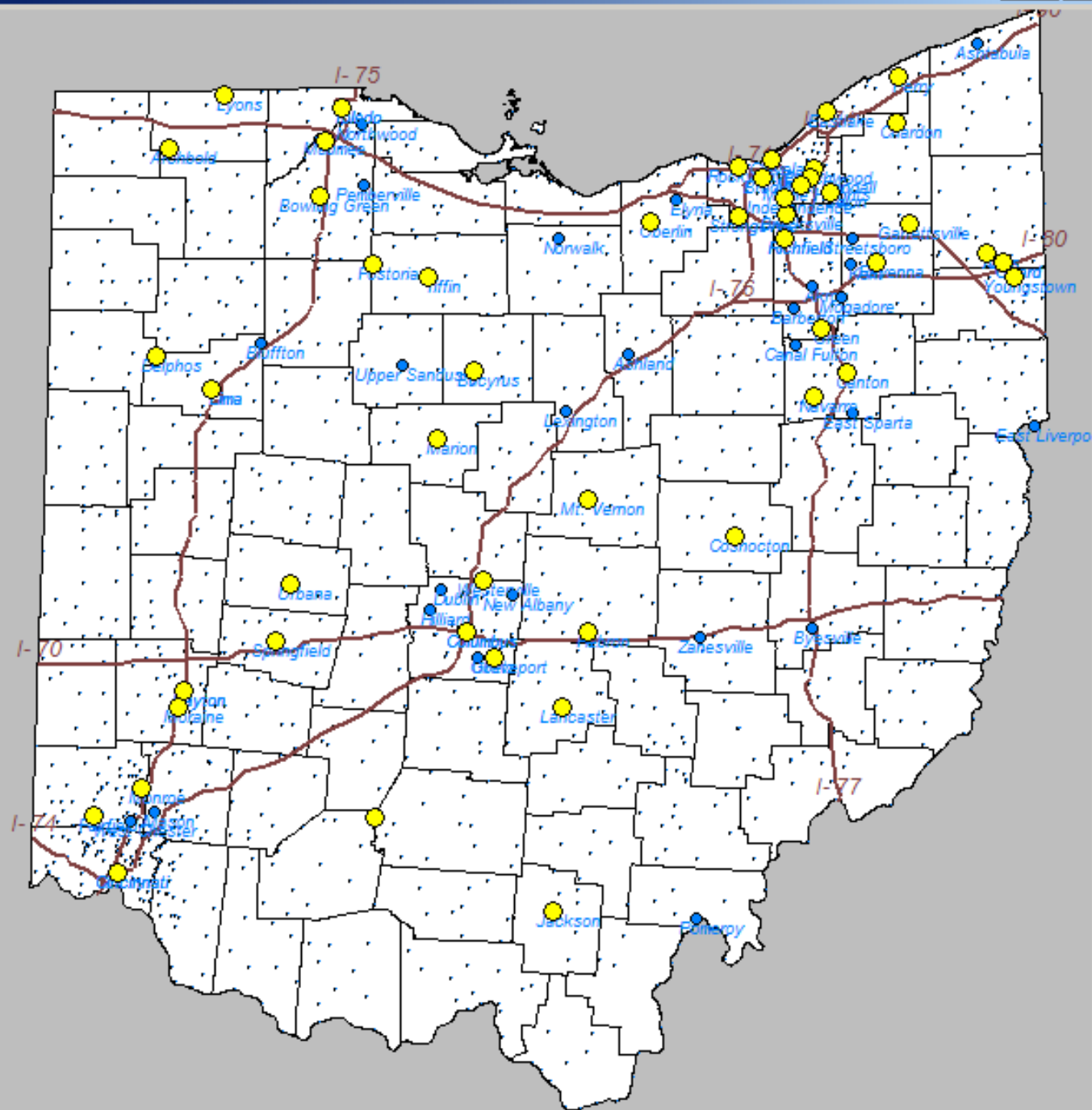


# Implications of Layoff Events

---



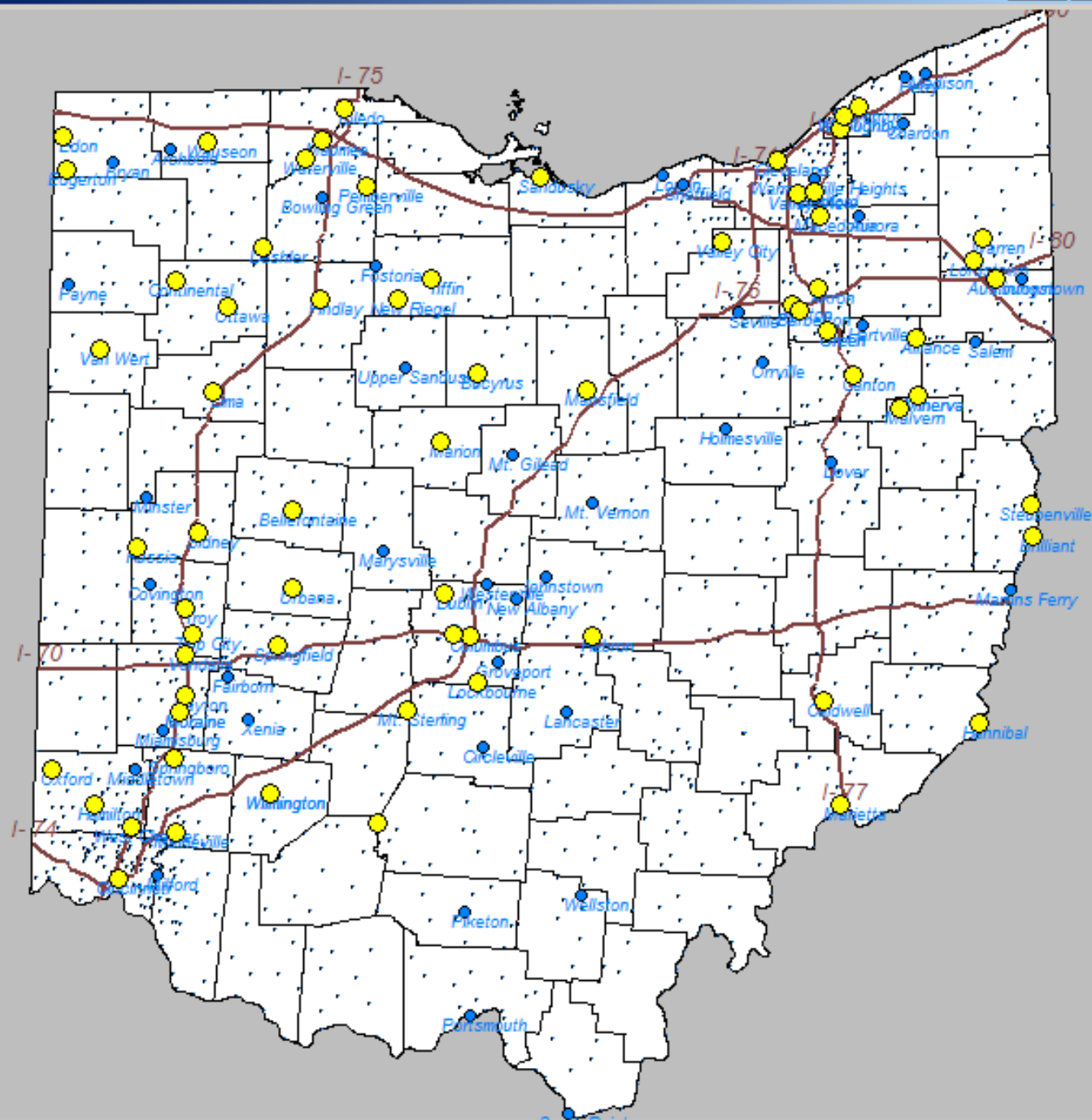
2007


Warn Notice CRD  
Spatial Toolbox

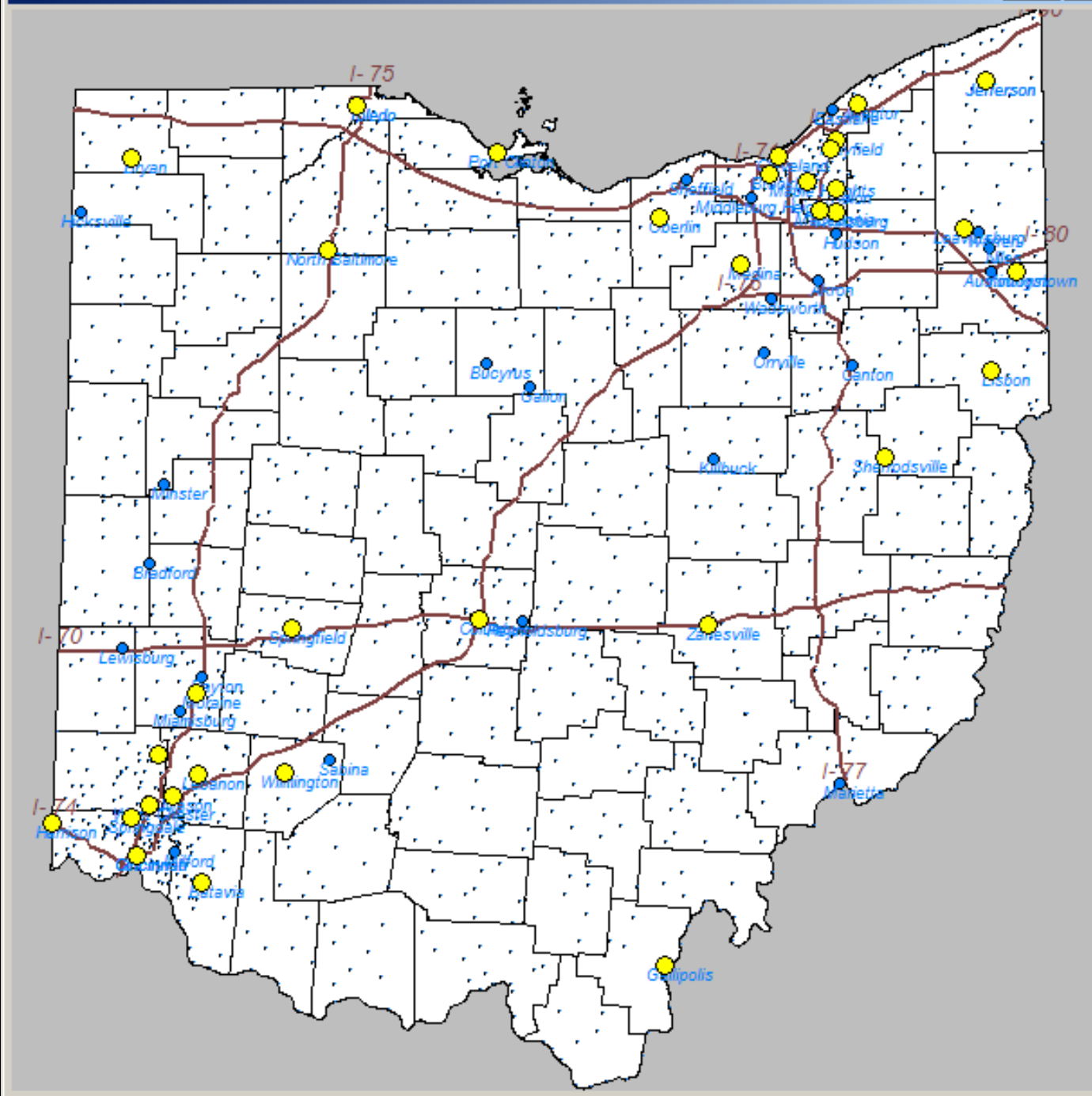
## Warn Notice CRD Spatial Toolbox



2009


Warn Notice CRD  
Spatial Toolbox

## Warn Notice CRD Spatial Toolbox

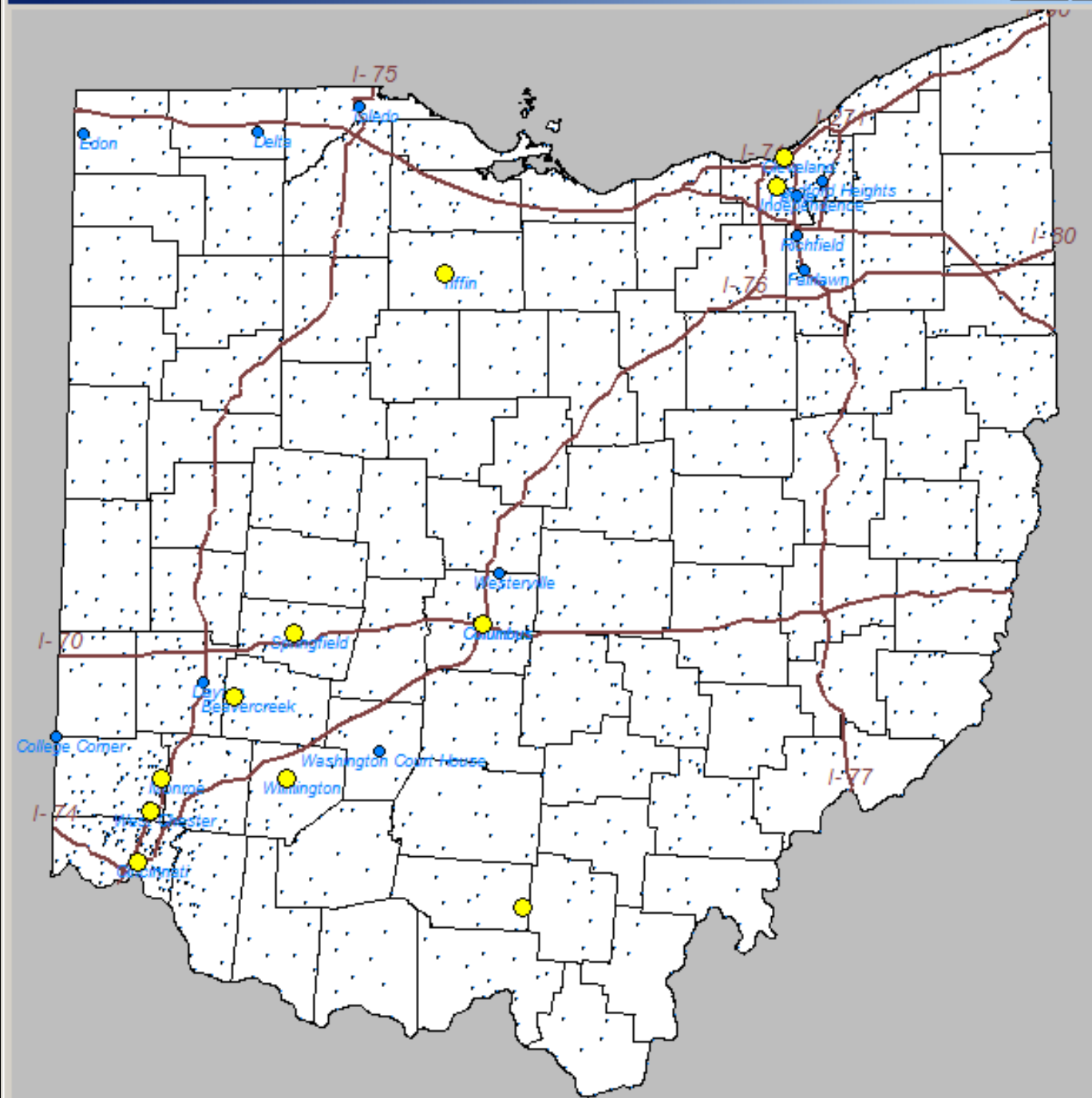




A map of the state of Ohio, showing its county boundaries and major cities. The map is color-coded: counties are outlined in black, major cities are marked with blue dots, and interstate highways are shown as red lines. The map includes labels for major cities such as Cleveland, Columbus, Cincinnati, and Dayton, as well as interstate highways like I-75, I-70, I-76, and I-77. The map is oriented with North at the top.



2012



Warn Notice CRD  
Spatial Toolbox



# 2012 Layoff Events

---

- 2,437 workers affected statewide
- 329 In NW Ohio
  - Edon
    - Diversified Machine (8 jobs permanent and 65 temporary layoff) Lost Ford as a customer
  - Delta
    - Graham Packaging (65 jobs; plant closure)
  - Tiffin
    - PCCW Teleservices (128 jobs; closure)
  - Toledo
    - WUPW Broadcasting (63 jobs)

# Affected Occupations Statewide 2012

---

• Management	158
• Professional	251
• Service	121
• Sales	462
• Office	485
• Construction	8
• Maintenance	105
• Production	412
• Transportation	435
• Total	2,437

# Selected Occupations

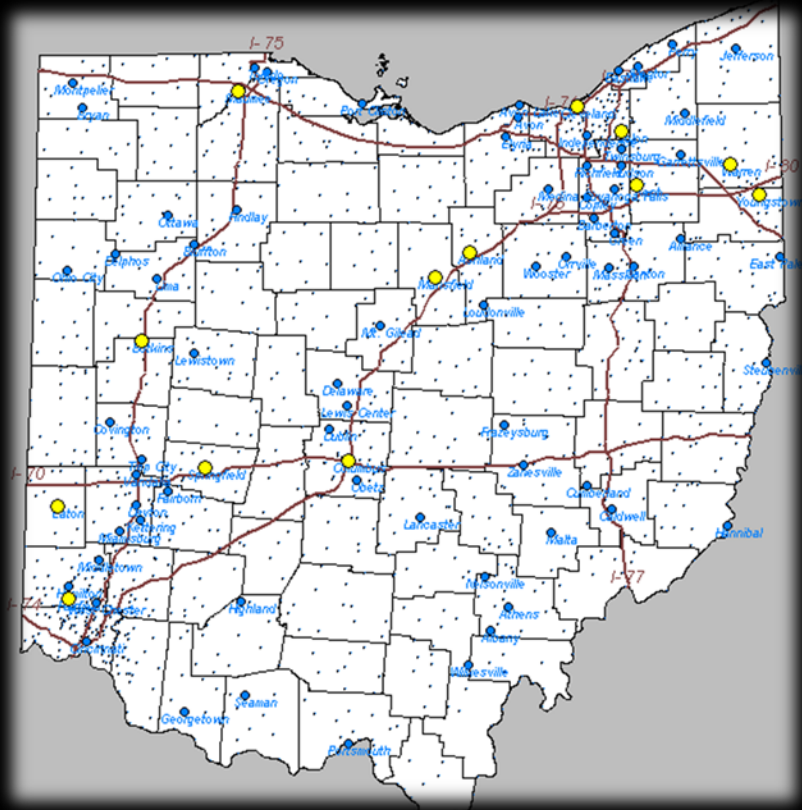
---

• Top executives	39
• Retail Sales	271
• Motor vehicle operators	123
• Secretaries	36
• Nursing/home healthcare	47
• Operations managers	32
• Computer specialists	48

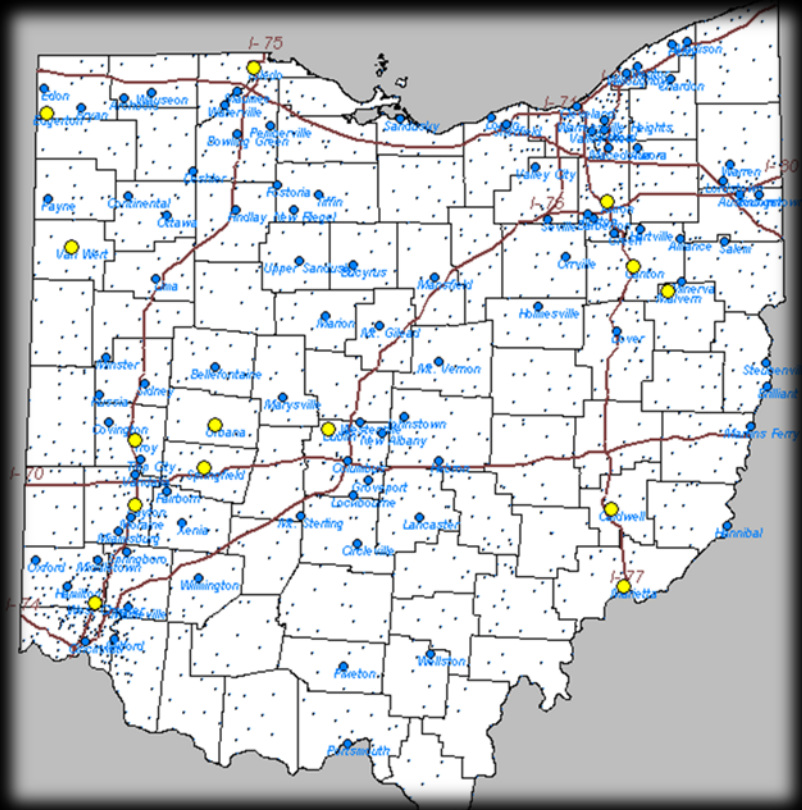
This map of Ohio displays its county boundaries and major transportation routes. The state is divided into 88 counties, each outlined in black. Major interstate highways are shown as red lines with their respective shields: I-75 runs north-south through the western part of the state; I-70 runs east-west across the middle; I-80 runs east-west in the northeast; and I-77 runs north-south in the southeast. A prominent red dashed line runs diagonally from the northwest corner to the southeast corner. Numerous cities and towns are labeled in blue text, including Cleveland, Columbus, Cincinnati, and many others. The map also shows the state's coastline along Lake Erie and Lake Michigan.

This map of Ohio displays county boundaries and major cities. A prominent red dashed line with diamond markers, representing the 40th parallel north, runs diagonally from the southwest to the northeast. Major interstate highways are shown as red lines with their respective shields: I-75, I-70, I-80, I-76, and I-77. Numerous cities and towns are labeled in blue text, including Cleveland, Columbus, Cincinnati, and Toledo. The map also shows the state's coastline and major water bodies like Lake Erie and Lake St. Clair.

# 2001



# 2009

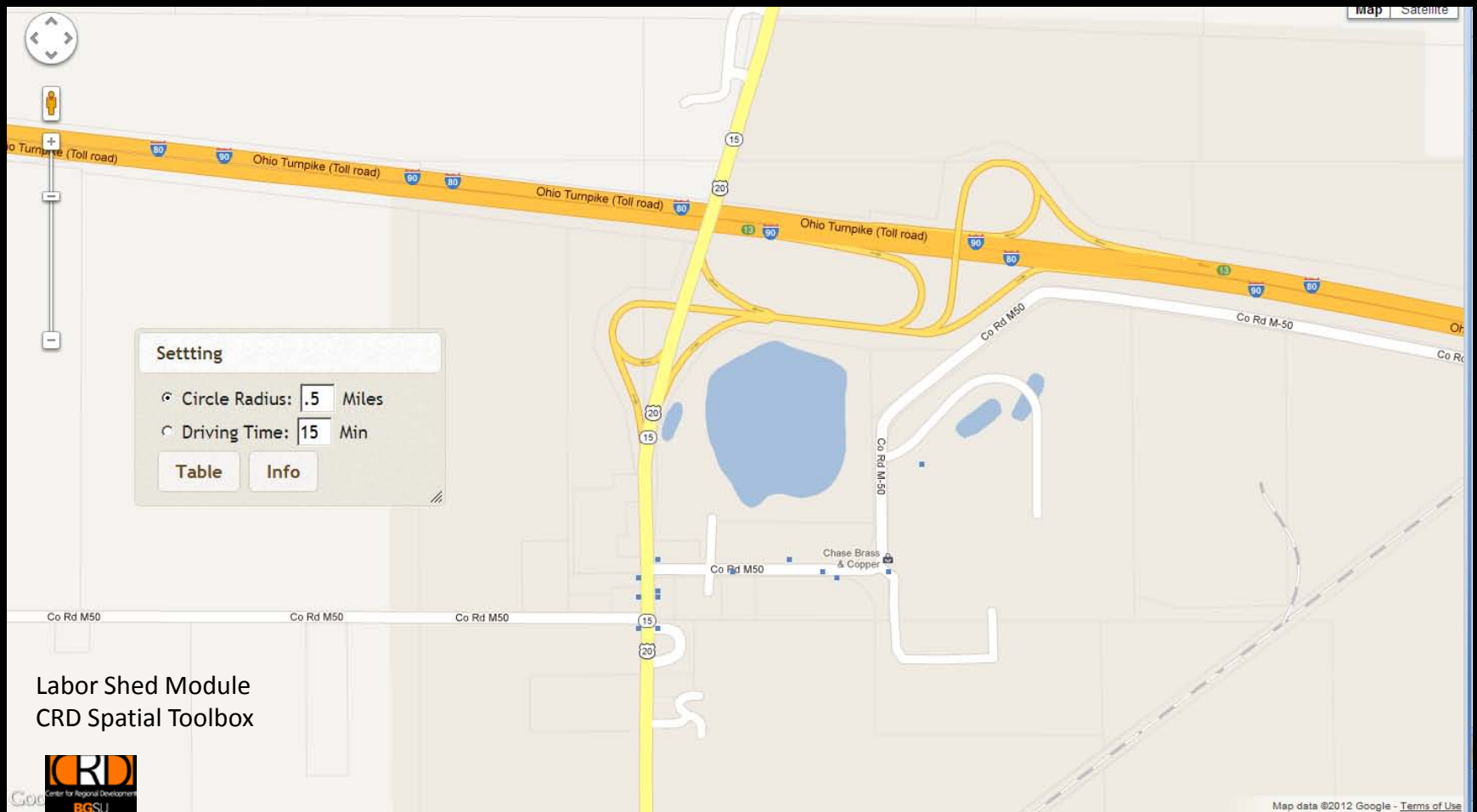


# Rural Vs. Urban

---

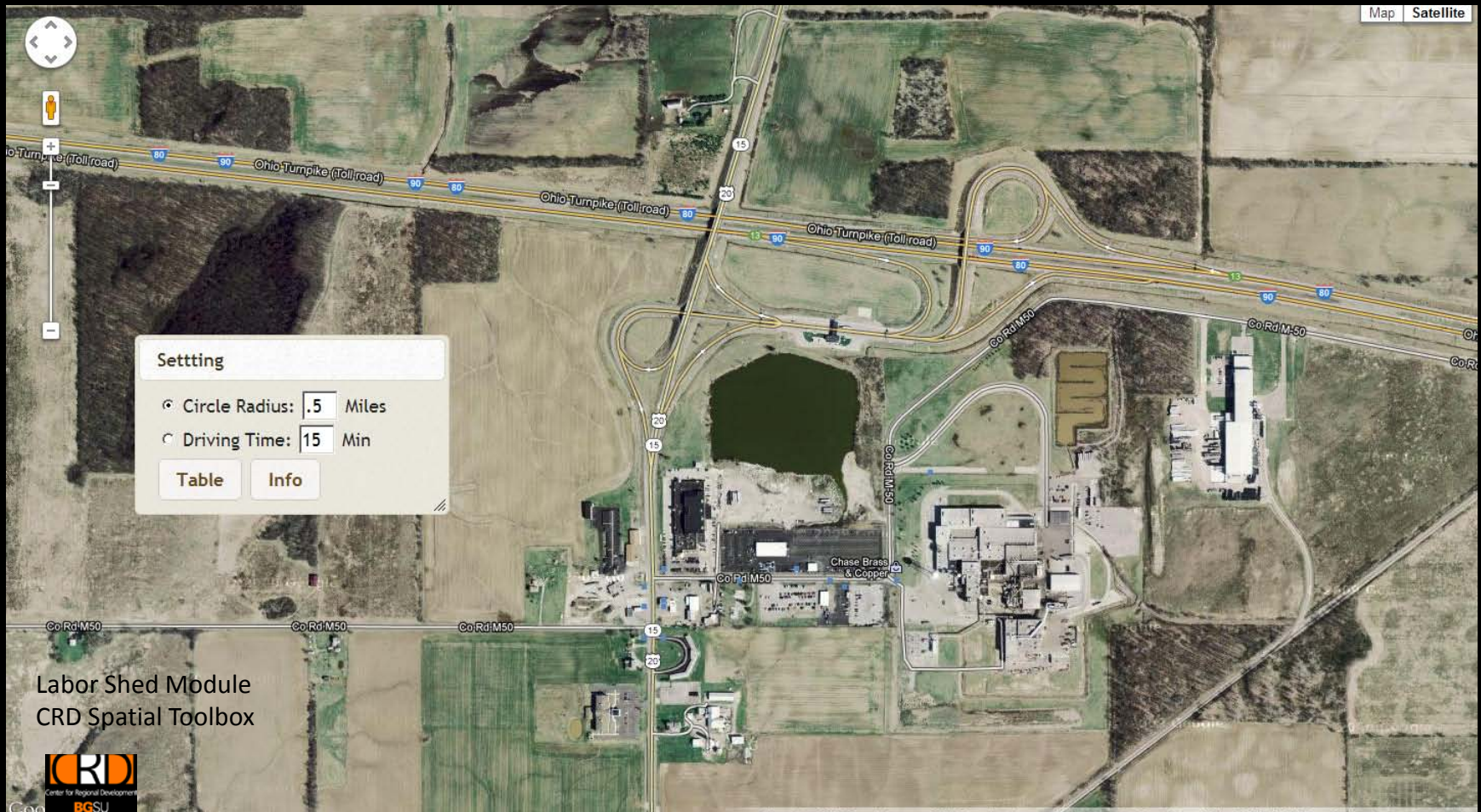
- Nationally rural counties weathered the recession better than urban counties
  - Large agricultural sector
  - Limited manufacturing sector
  - Limited construction sector
- Ohio rural counties have a significant manufacturing presence

# Holiday City

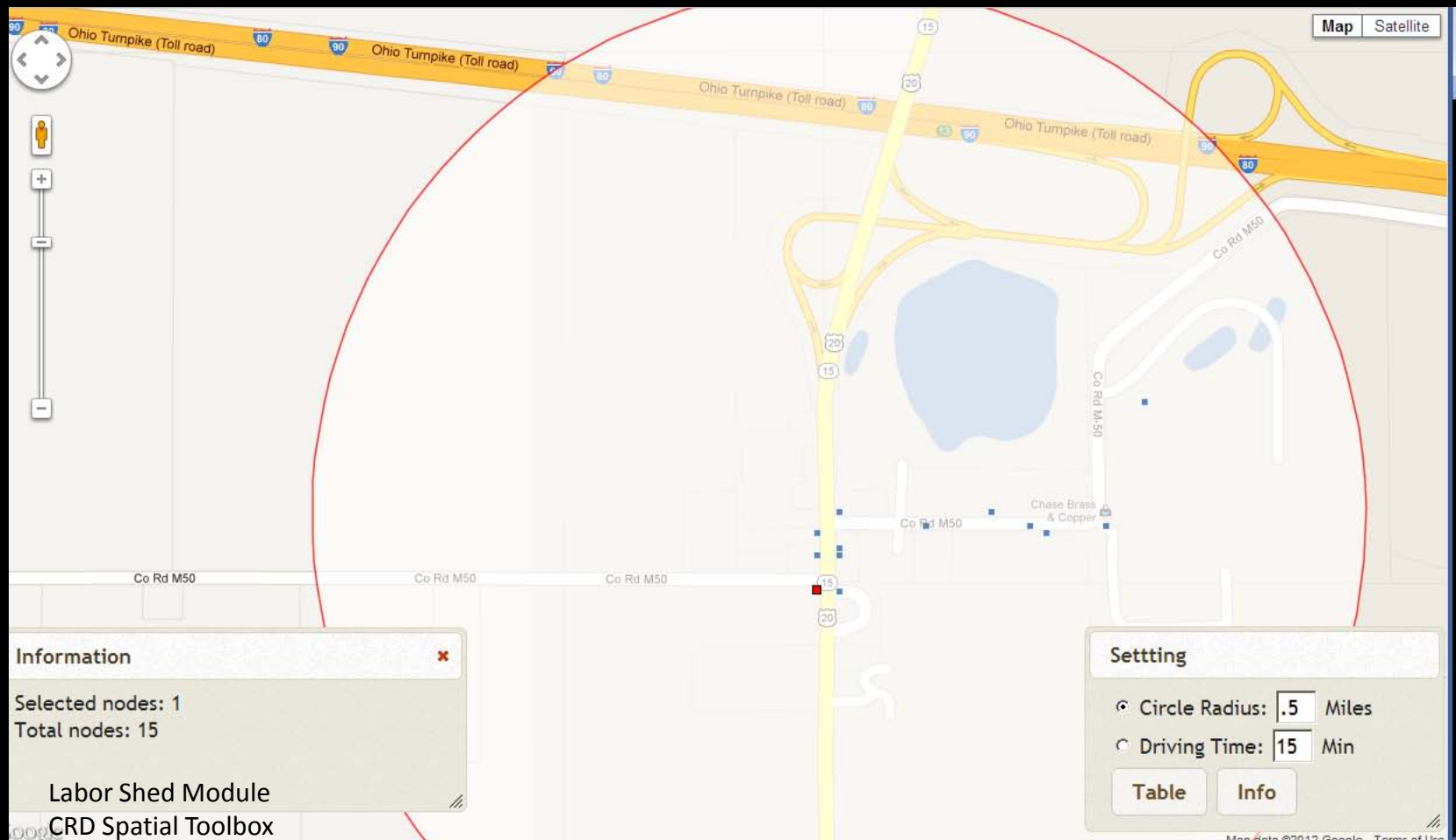




# Holiday City (Exit 13)



# ½ Mile Radius



# Holiday City (Exit 13)

---

- Employment 737

- Selected Occupations

- Office and administrative 101

- Production 231

- Transportation 8

- Sales 64

- Management 51

- Repair / Maintenance 53



# Future Changes

---



# Ohio Industry Employment Projections for Region 2 to 2018

---

	Growth
• Manufacturing	-14.9%
• Construction	11.4%
• Health care and social assistance	21.2%
• Wholesale trade	1.9%
• Retail trade	-0.5%
• Transportation and warehousing	9.5%
• Finance and insurance	3.6%
• Professional and technical services	22.5%
• Education services	13.7%
• Government	0.5%

# Challenges

---

- Nationally
  - European recession
  - Oil Prices
  - Washington
- Regionally
  - Alternative energy
  - State funding to local governments
  - Fear of change

# Thank you

---

Michael C. Carroll, Ph.D.  
Center for Regional Development  
Bowling Green State University