

Crossroads of tradition & innovation

NONPROFIT ORG  
U.S. POSTAGE  
PAID  
BOWLING GREEN  
STATE UNIVERSITY

SCHOOL OF ART | COLLEGE OF MUSICAL ARTS | CREATIVE WRITING | THEATRE & FILM  
BOWLING GREEN STATE UNIVERSITY

studio  
2014

FALL







Background image: *Untitled*, oil on canvas by Dana Saulnier



# FALL | events 2014



## welcome!

**At Bowling Green State University, The Arts form creative intersections where our visitors experience the depth of tradition and the spark of the new** – a synergy of interactions extending the boundaries of knowledge and imagination.

Comprised of the College of Musical Arts, the School of Art, the Department of Theatre & Film, and the Creative Writing program, The Arts at BGSU function as an interdisciplinary unit, fostering a culture of creativity on our campus and in our community.

We are the Crossroads of Tradition and Innovation, and we look forward to sharing our Fall 2014 season with you.

## special events ...

### The Identity Project

**The Identity Project** is a University- and community-wide collaboration exploring the relationship between self-disclosure – especially of highly personal information and identity formation – and the concept of personal privacy versus safety and surveillance. Event times and locations can be found in the main calendar, pages 4-5. Events include:

**Sept. 29** – CONCERT: McGill Brothers

**Oct. 17 – Nov. 19** – EXHIBITION –TELLING TRUTHS/SPEAKING SECRETS

**Oct. 17** – ARTALK: Noël Palomo-Lovinski

**Nov. 7** – SYMPOSIUM: INVESTIGATING IDENTITY

**Nov. 9** – CCC AWARENESS EVENT AND FASHION SHOW

**Nov. 10** – THE LABINO-BLACK RESIDENCY: Ruby Onyinyechi Amanze

### OCT. 22 | The Edwin H. Simmons Creative Minds Series

The Arts at Bowling Green State University is pleased to welcome **art historian and critic James Elkins**, an innovator in his field, to campus this fall. Elkins holds a Ph.D. in Art History from the University of Chicago, and is currently the E.C. Chadbourne Chair in the Department of Art History, Theory and Criticism at the School of the Art Institute of Chicago.

Elkins’ writing explores the history and theory of images in art, science, and nature. Some of his books are exclusively on fine art, such as “What Painting Is,” while others include scientific and non-art images, writing systems, and archaeology, “The Domain of Images.” Yet others are about natural history, “How to Use Your Eyes.” His most recent books include “What Photography Is,” which challenges Roland Barthes’s “Camera Lucida,” and “Art Critiques: A Guide.”

### DEC. 6 | ArtsX 10th Anniversary!

ArtsX, now in its 10th year, is a signature annual Arts event, and is the occasion for the University’s artists and performers to show off their talents and creations to the community. Over 2,000 guests attend each year.

The University’s arts programs will be on display on **Saturday, December 6**, following the family-friendly opera “Amahl and the Night Visitors” at 4 p.m. in the Thomas B. and Kathleen M. Donnell Theatre. **From 5-9 p.m. the Arts at BGSU will come to life** in the Wolfe Center for the Arts and the Fine Arts Center, including the Dorothy Uber Bryan and Willard Wankelman galleries.

Along with contributions from the College of Musical Arts, the School of Art, the Department of Theatre & Film and the Creative Writing and Dance programs, numerous other student clubs, organizations and departments, such as Architecture and Interior Design, will participate in this special night.

Established in 1980, the **Festival Series at the College of Musical Arts** has become the longest-running musical performance series at BGSU and has featured some of the top artists in dance, classical music, new music and jazz. Over the last 34 years, our guests have included Yo Yo Ma, The Vienna Choir Boys, Emmanuel Ax, The King’s Singers, Alvin Ailey Repertory Ensemble, Terence Blanchard, P.D.Q. Bach and Branford Marsalis, among others. \$

**Oct. 13** – THE THIRTEEN

**Oct. 31** – FRANKENSTEIN

**Nov. 22** – PROJECT TRIO

**Dec. 5/6** – AMAHL AND THE NIGHT VISITORS



*Night of the Living Dead*

# main stage

## E V E N T S

**Main stage events in the Department of Theatre & Film** include musical theatre productions, plays and cultural events for the community to enjoy. Performed by students, these productions bring the world of imagination into our beautiful facilities several times a year. \$

- Sept. 25/28** – THE MOUNTAINTOP
- Oct. 23/26** – NIGHT OF THE LIVING DEAD
- Nov. 13/16; 20/22** – BOOK OF DAYS

# art exhibitions



**The School of Art at BGSU** is one of the largest state art schools in Ohio and offers several exhibitions each year in the Dorothy Uber Bryan and Willard Wankelman galleries in the Fine Arts Center. These free shows feature art in numerous media. The galleries are open 11 a.m.-4 p.m. Tuesday through Saturday, 6-9 p.m. on Thursdays, and 1-4 p.m. Sundays.

- Aug. 29** –REVERB II (through Sept. 28)
- Sept. 9** – SOUND/SCULPTURE (through Oct. 18, closed Oct. 9-13)
- Oct. 17** – TELLING TRUTHS/SPEAKING SECRETS (through Nov. 19)
- Oct. 25** – DISTINGUISHED (through Nov. 22)
- Dec. 7** – Faculty/Staff Exhibition (through Jan. 18, 2015 – closed Dec. 18-Jan.12)

## CONTENTS

Special Events	2
Festival Series	2
Main Stage Events	3
Art Exhibitions	3
August-December Event Calendar	4-5
Residencies across the Arts	6
Visiting Writers	6
The Gish Film Theater	7
ARTalks	7
Our sponsors	8
Box office information, map, venue locator	8

All events are subject to change.  
\$ = paid event

Please visit [BGSU.edu/Arts](http://BGSU.edu/Arts) for up-to-date information.



# august - september

**AUG. 29 — SEPT. 28**

SCHOOL OF ART

**Exhibition — REVERB II: Recent Abstraction in Painting**

Dorothy Uber Bryan Gallery

Curator's Talk at 6 p.m. on Sept. 29

#BGSUArt



*Prout Chapel*

**SEPT. 9 — OCT. 18**

SCHOOL OF ART

**Exhibition — SOUND/SCULPTURE: Harry Bertoia, Nathalie Miebach & the Kusuma Sari Balinese Gamelan**

Willard Wankelman Gallery

#BGSUArt

**SEPT. 18**

CREATIVE WRITING

**Visiting Writer — Ben Stroud**

Prout Chapel

7:30 p.m.

**SEPT. 25**

THEATRE & FILM

**Performance — “The Mountaintop”**

Eva Marie Saint Theatre

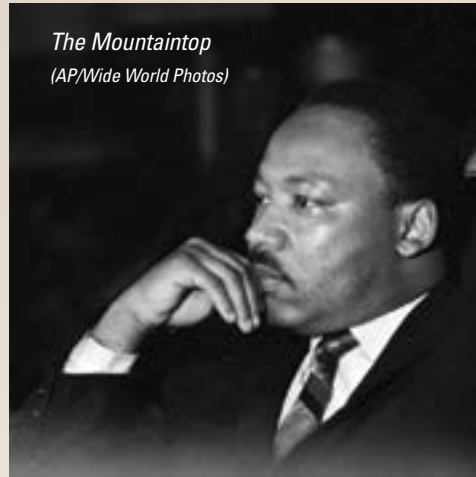
8 p.m.

Additional performances:

Sept. 26, 27 at 8 p.m.,

Sept. 27, 28 at 2 p.m.

#BGSUTheatre #Mountaintop



*The Mountaintop*  
(AP/Wide World Photos)

**SEPT. 29**

SCHOOL OF ART

**ARTalk — Jim Sherraden**

Bowen-Thompson Student Union

Theater, Room 206

6 p.m.

**SEPT. 29**

COLLEGE OF MUSICAL ARTS

**Arts Residency — Hansen Musical Arts Series\***

Featured guest — The McGill Brothers

Thomas B. and Kathleen M. Donnell

Theatre

8 p.m.

#BGSUMusic #McGillBrothers

#IdentityProject

# october

**OCT. 6**

SCHOOL OF ART

**ARTalk — Cassie Stephens**

Fine Arts Center, 204

5 p.m.

**OCT. 13**

SCHOOL OF ART

**LEGENDS — Lynn Whitney**

Thomas B. and Kathleen M. Donnell Theatre

5 p.m.

**OCT. 13**

COLLEGE OF MUSICAL ARTS

**Festival Series — The Thirteen^**

Kobacker Hall

8 p.m.

#BGSUMusic #Festival Series

#TheThirteen

**OCT. 15**

SCHOOL OF ART

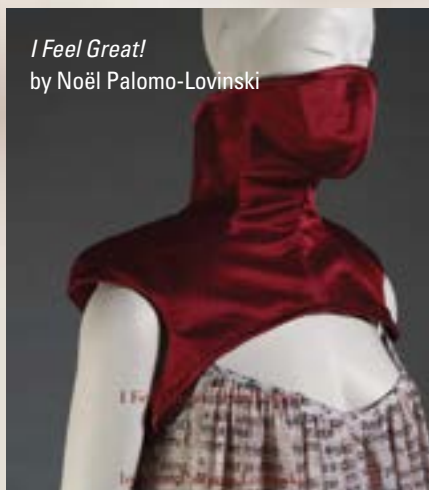
**ARTalk/Performance — Sound/Sculpture**

Celia Bertoia, Nathalie Miebach, and BGSU's

Combustible Arts Ensemble

Willard Wankelman Gallery

6 p.m.



*I Feel Great!*  
by Noël Palomo-Lovinski



*New Music and Art Festival*

**OCT. 15 — 18**

COLLEGE OF MUSICAL ARTS,  
SCHOOL OF ART

**New Music and Art Festival**

Visit BGSU.edu/newmusic for

complete schedule

#BGSUMusic #BGSUArt #NewMusic

**OCT. 17 — NOV. 19**

SCHOOL OF ART

**Identity Project | Exhibition — TELLING TRUTHS/**

**SPEAKING SECRETS**

**Noël Palomo-Lovinski and**

**Ruby Onyinyechi Amanze**

Dorothy Uber Bryan Gallery

#IdentityProject

**OCT. 16**

CREATIVE WRITING

**Visiting Writer — Monica McFawn**

Prout Chapel

7:30 p.m.

**OCT. 17**

THE ARTS

**Identity project | ARTalk —**

**Noël Palomo-Lovinski**

Fine Arts Center, 204

6 p.m.

#IdentityProject

**OCT. 22**

THE ARTS

**Arts Residency —**

**The Edwin H. Simmons**

**Creative Minds Series:**

**James Elkins**

Eva Marie Saint Theatre

6 p.m.

#ArtsatBGSU #CreativeMinds

**OCT. 23 — 26**

THEATRE & FILM

**Performance —**

**“Night of the Living Dead”**

Thomas B. and

Kathleen M. Donnell Theatre

8 p.m.

Additional Performances:

Oct. 24, 25 at 8 p.m.,

Oct. 25, 26 at 2 p.m.

#BGSUTheatre #LivingDead

**OCT. 25 — NOV. 22**

SCHOOL OF ART

**Exhibition — DISTINGUISHED:**

**Hilty, Jacomini, Mazur**

Willard Wankelman Gallery

#BGSUArt

**OCT. 31**

COLLEGE OF MUSICAL ARTS

**Festival Series — Frankenstein**

Thomas B. and

Kathleen M. Donnell Theatre

8 p.m.

#BGSUMusic #FestivalSeries

#Frankenstein

## There's always something going on in The Arts!

With over 400 events each year, there is always something to look forward to. From large ensemble concerts to Elsewhere Theatre productions, and faculty recitals to gallery exhibitions, be sure to visit BGSU.edu/Arts for the most up-to-date, and comprehensive, Arts calendar.



# november

**NOV. 3**

SCHOOL OF ART  
**ARTalk – Anita Jung**  
Fine Arts Center, 204  
6 p.m.

**NOV. 7**

THE ARTS  
**Identity project | Symposium – Investigating Identity**  
Bowen Thompson Student Union  
10 a.m. – 5 p.m.  
#IdentityProject

**NOV. 9**

THE ARTS  
**Identity project | Event – CCC Awareness and Fashion Show**  
Lobby, Wolfe Center for the Arts;  
Fine Arts Galleries  
3 – 6 p.m.  
#IdentityProject

**NOV. 10**

THE ARTS  
**Identity project | Arts Residency – The Labino-Black Visiting Artist: Ruby Onyinyechi Amanze**  
Thomas B. and Kathleen M. Donnell Theatre  
6 p.m.  
#IdentityProject

**NOV. 13 - 15**

CREATIVE WRITING  
**Festival of Writing - Winter Wheat**  
Prout Chapel and  
Bowen-Thompson Student Union  
Visit BGSU.edu/winterwheat for  
festival details

**NOV. 13 - 16; 20 - 22**

THEATRE & FILM  
**Performance – “Book of Days”**  
Eva Marie Saint Theatre  
8 p.m.  
Additional Performances:  
Nov. 14, 15, 20, 21, 22 at 8 p.m.,  
Nov. 15, 16, 22 at 2 p.m.  
#BGSUTheatre #BookofDays

**NOV. 17**

SCHOOL OF ART  
**ARTalk - Distinguished: Hilty, Jacomini, Mazur**  
Thomas B. and Kathleen M. Donnell Theatre  
6 p.m.; Reception will follow  
#BGSUArt

**NOV. 22**

COLLEGE OF MUSICAL ARTS  
**Festival Series – Project Trio**  
Kobacker Hall  
8 p.m.  
#BGSUMusic #FestivalSeries #ProjectTrio



# december

**DEC. 5, 6**

COLLEGE OF MUSICAL ARTS,  
BGSU OPERA THEATER  
**Festival Series – “Amahl and the Night Visitors”**  
As a part of ArtsX  
Thomas B. and Kathleen M. Donnell Theatre  
7 p.m. 12/5, 4 p.m. 12/6  
#BGSUOpera #ArtsatBGSU #ArtsX

**DEC. 6**

THE ARTS  
**Cultural Event – ArtsX**  
Wolfe Center for the Arts  
and Fine Arts Center  
Event begins at 5 p.m.  
following the opera, till 9 p.m.  
#ArtatBGSU #ArtsX

**DEC 7 – 17; JAN. 13 - 15**

SCHOOL OF ART  
**Exhibition – Annual Faculty/Staff Show**  
Dorothy Uber Bryan Gallery  
#BGSUArt

^Sponsored by the Helen McMaster  
Endowed Professorship in  
Vocal and Choral Studies

\* Sponsored by the Dorothy E. and  
DuWayne H. Hansen Musical Arts  
Series Fund

# FALL

# events 2014


SCHOOL OF ART | COLLEGE OF MUSICAL ARTS | CREATIVE WRITING | THEATRE & FILM  
B O W L I N G   G R E E N   S T A T E   U N I V E R S I T Y

*Homage to Odin*  
Etched formed bronze, copper and leather by Jaye Parsley





# FALL | events 2014



James Elkins,  
art historian and critic

## RESIDENCIES across the arts!

**Through the generous support of Arts patrons, we are able to offer numerous Creative, Fine Art, Performing and Literary academic residencies at BGSU.** For current and prospective Arts students, as well as interested community members, the Arts hosts notable visiting artists, authors, musicians and performers from various disciplines for educational enrichment.

Attendees enjoy Master Classes and events such as performances, exhibitions, concerts or readings, exposing all to a wider Arts culture.

**Sept. 29** – The Dorothy E. and DuWayne H. Hansen Musical Arts Series featuring the McGill Brothers

**Oct. 13** – McMaster Professorship in Vocal and Choral Studies

**Oct. 15/18** – The New Music and Art Festival featuring musician Paul Dresher and his Double Duo

**Oct. 15/18** – The New Music and Art Festival featuring musician Paul Dresher and his Double Duo

**Oct. 22** – The Edwin H. Simmons Creative Minds Series with art historian and critic James Elkins

**Nov. 10** – The Labino-Black Residency featuring visual artist Ruby Onyinyechi Amanze

Please visit [BGSU.edu/Arts](http://BGSU.edu/Arts) for the complete schedule



## visiting writers

### **The College of Arts and Sciences Visiting Writers Series**

is an important aspect of BGSU's campus culture. Nationally known writers such as Marge Piercy, Virgil Suarez, C.K. Williams, Aimee Bender, Anthony Doerr, Simon Ortiz, Stuart Dybek, Grace Paley, Stephen Dunn, Frank Chin, and Rick Moody visit to read their works and meet with faculty and students. In addition to visiting writers, BGSU faculty, students, and distinguished alumni also read from their works. All readings are free and open to the public.

**Sept. 18** – Ben Stroud

**Oct. 16** – Monica McFawn



# The Dorothy and Lillian Gish Film Theater and Gallery



**The Gish Film Theater and Gallery**, now in its 38th year, is located in Hanna Hall, and is named to commemorate the achievements of Ohio natives Dorothy and Lillian Gish.

Dedicated at BGSU on June 11, 1976, The Gish Film Theater and Gallery strives to keep the memory of the talented and legendary Gish sisters alive so that future generations of film lovers can have the chance to witness firsthand what made Dorothy and Lillian Gish such popular and enduring figures during the earliest years of motion picture history. Lillian Gish’s 75-year career ran from 1912-1987.

The Gish Film Theater serves as a venue for the University and community, as well as classes, to view a variety of film genres. It hosts three weekly series: Sunday Matinees, Tuesdays at The Gish, and International Films, on Thursdays.

Please visit [BGSU.edu/Gish](http://BGSU.edu/Gish) for a complete listing of films, dates and times.

# ARTalks

**ARTalks** is a lecture series sponsored by the School of Art that brings prominent artists and scholars to campus. This year, in conjunction with the Identity Project, featured guest Noël Palomo-Lovinski, Associate Professor of Fashion at Kent State University, will present. Additionally, the BGSU Galleries is delighted to welcome back Tom Hilty, Ron Jacomini and Bob Mazur –“Four at the Fore”– who shaped the School of Art during an exciting era of growth.

**Sept. 29** – ARTalk: Jim Sherraden

**Oct. 6** – ARTalk: Cassie Stephens

**Oct. 17** – ARTalk: Noel Palomo-Lovinski

**Nov. 3** – ARTalk: Anita Jung

**Nov. 17** – ARTalk: ‘Distinguished’ | Hilty, Jacomini, Mazur



*A Gift of What is Insufficient,*  
oil on panel by  
Deborah Zlotsky



# our sponsors

**The Arts at BGSU is the beneficiary of the generosity of many, and we gratefully acknowledge the support from:**

## Our Media Sponsors:

### WBGU-TV

WBGU-TV is committed to the continued growth of its partnerships with PBS, Bowling Green State University and communities served through award-winning entertainment and educational resources, and through documentation of history, arts, culture and natural resources of the region. We are pleased to support The Arts at BGSU! Visit us at [www.wbgu.org](http://www.wbgu.org).

### WGTE Public Media

WGTE is a non-profit organization, a center of learning and education for northwest Ohio and southeast Michigan - and a proud sponsor of The Arts at BGSU. Since WGTE was founded as an educational institute in 1952, education remains at the heart of what we do every

day. Our programs on WGTE TV, FM 91, [www.Knowledgestream.org](http://www.Knowledgestream.org), and our extensive education outreach services, help make northwest Ohio and southeast Michigan a better place to live. Discover more at [www.wgte.org](http://www.wgte.org).

### The Toledo Free Press

Toledo Free Press is a twice-weekly paper in Toledo, Ohio – and pleased to support The Arts at BGSU. Founded in March 2005, the paper blends investigative journalism, commentary, local news and features, covering news often missed by the other periodicals in the area. Toledo Free Press is the largest-circulated Sunday newspaper in Lucas County, and was named “Best Weekly Newspaper in Ohio” by the Ohio Society of Professional Journalists in 2009, 2010, 2011 and 2012.

## Annual Membership Organizations:

### ProMusica

Pro Musica is a musical membership organization that supports the College of Musical Arts by providing funding for student-initiated educational travel

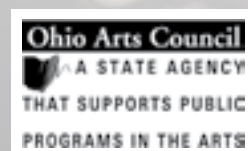
projects. In addition, private gifts to the Pro Musica endowment provide annual funding for four scholarships and other awards.

### The Medici Circle

The Medici Circle is a visual arts membership organization that provides funding for a wide range of enrichment activities that complement the traditional classroom experience and further elevate the excellence of School of Art faculty and students.

## The Fine Arts Center Galleries in the School of Art gratefully recognize the monetary and in-kind support from:

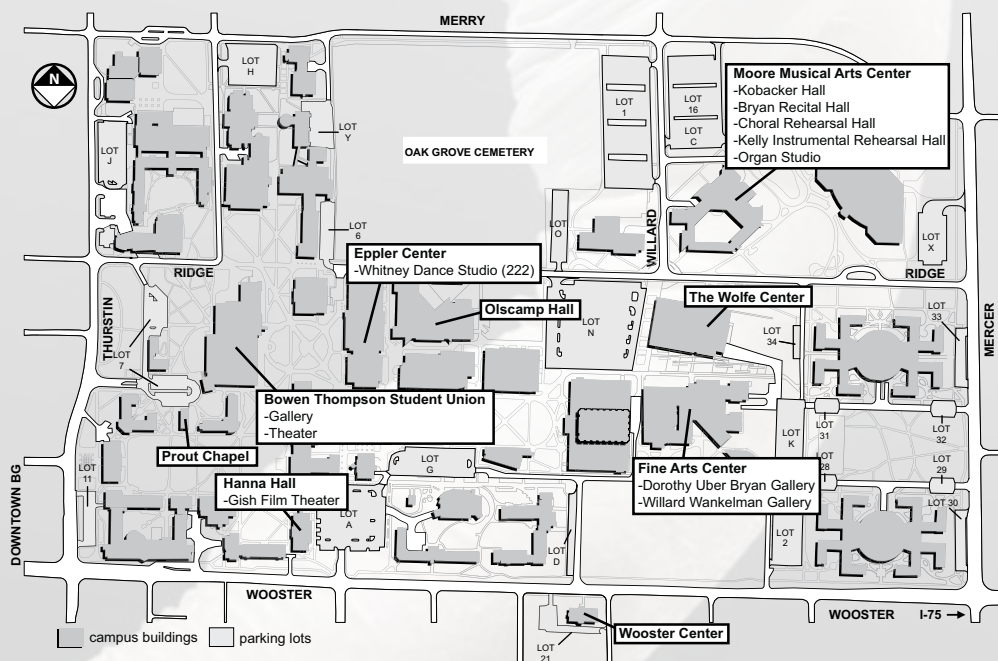
The Ohio Arts Council  
Sea Lion Studio  
The Andersons  
BGSU Ethnic Cultural Arts Program  
BGSU Arts Village  
Bowling Green Kiwanis  
Many individuals and local businesses



## About the artist:

Senior Shelly Svonavec exhibited a series of three oil paintings in the 2014 Bachelor of Fine Arts Thesis Exhibition, *And All Is Well, Part 1, Part 2 and Part 3*. *And All Is Well, Part 2* was selected as a Purchase Award by Medici Circle and has become part of the Fine Arts Center Galleries Collection. Svonavec also received the Tom and Jane Vanden Eynden Art Education Award.

About her work Svonavec said, “The paintings capture a moment in time at which all colors are illuminated by the sun breaching the horizon. Those few minutes where you feel completely whole within yourself. In this intense awakening of your soul, the sunlight skates upon the surface of the earth. You take a deep breath of the world that is alive around you, knowing that in the matter of moments, you will succumb to the darkness of the night...”



## The Arts Box Office

Open weekdays noon to 5 p.m.  
[BGSU.edu/Arts](http://BGSU.edu/Arts)  
419-372-8171

\*Hours for Fine Arts Center Galleries  
Tuesday-Saturday: 11 a.m. to 4 p.m.  
Thursday: 6-9 p.m.  
Sunday: 1-4 p.m.  
Closed: University holidays  
Special times for groups.  
Classes by appointment.  
All gallery events are free and the public is warmly welcomed.

To our guests with disabilities, please indicate if you need special services, assistance, or accommodations to fully participate in these programs by contacting: Theresa Clickner, [tclick@bgsu.edu](mailto:tclick@bgsu.edu), College of Musical Arts, 419.372.2506, Theatre, Film and Dance, 419.372.2506; Jacqueline Cummins, [cumminj@bgsu.edu](mailto:cumminj@bgsu.edu), Creative Writing, 419.372.0561; Brett Holden, [bholden@bgsu.edu](mailto:bholden@bgsu.edu), Gish Film Theater, 419.372.4474; or Lisa Molnar, [lmolnar@bgsu.edu](mailto:lmolnar@bgsu.edu), School of Art, 419.372.2786. Please notify us ten days prior to the event.

## For more information about the galleries contact:

Jacqueline S. Nathan, gallery director,  
[galleries@bgsu.edu](mailto:galleries@bgsu.edu) or 419-372-8525  
or visit the website at [Galleries.BGSU.edu](http://Galleries.BGSU.edu)

For more information on the 34th annual  
New Music Festival visit:  
[www.BGSU.edu/NewMusic](http://www.BGSU.edu/NewMusic)

For information about the  
Festival Series visit:  
[BGSU.edu/FestivalSeries](http://BGSU.edu/FestivalSeries)

**BGSU.EDU/ARTS | THE ARTS BOX OFFICE 419-372-8171**