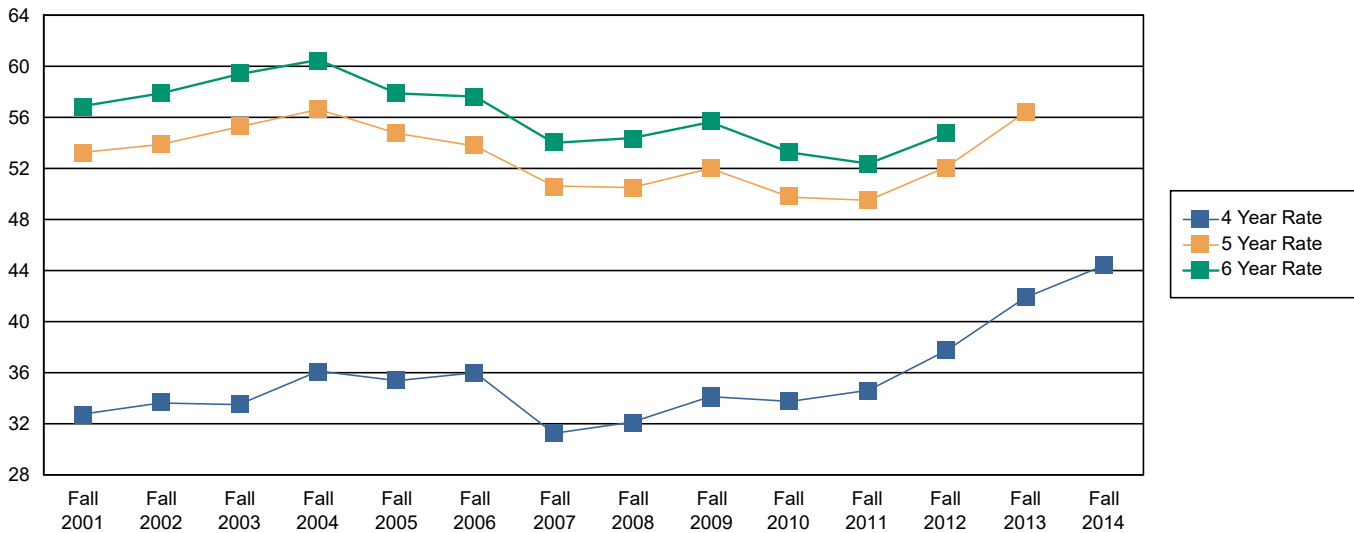


BGSU Undergraduate First-Time, Full-Time Student Graduation Rates (%)
(Main Campus)

Cohort	Cohort Count	4 Yr Grad Cnt	4 Year Rate	5 Yr Grad Cnt	5 Year Rate	6 Yr Grad Cnt	6 Year Rate
Fall 2001	3,590	1,173	32.67%	1,908	53.15%	2,039	56.80%
Fall 2002	3,582	1,203	33.59%	1,930	53.88%	2,072	57.85%
Fall 2003	3,521	1,179	33.49%	1,945	55.24%	2,090	59.36%
Fall 2004	3,862	1,392	36.04%	2,186	56.60%	2,334	60.44%
Fall 2005	3,579	1,265	35.35%	1,960	54.76%	2,071	57.87%
Fall 2006	3,570	1,282	35.91%	1,918	53.73%	2,054	57.54%
Fall 2007	3,232	1,009	31.22%	1,633	50.53%	1,745	53.99%
Fall 2008	3,077	986	32.04%	1,551	50.41%	1,671	54.31%
Fall 2009	3,132	1,067	34.07%	1,628	51.98%	1,742	55.62%
Fall 2010	3,858	1,302	33.75%	1,918	49.72%	2,054	53.24%
Fall 2011	3,807	1,315	34.54%	1,884	49.49%	1,992	52.33%
Fall 2012	3,591	1,354	37.71%	1,869	52.05%	1,966	54.75%
Fall 2013	3,328	1,394	41.89%	1,877	56.40%		
Fall 2014	3,018	1,338	44.33%				

Main FTFT Cohort Graduation Rate (%)



*Report is run using Census Data

*Cohorts are FTFT, Main Campus Only (Exclusions included)

*Graduates are defined as graduating with a Bachelors degree

Created in the Office of Institutional Research