

RAY BROWNE CONFERENCE FOR POPULAR CULTURE STUDIES

# CONSIDERING CONCLUSIONS:

What Do We Learn When We Unpack the Popular?

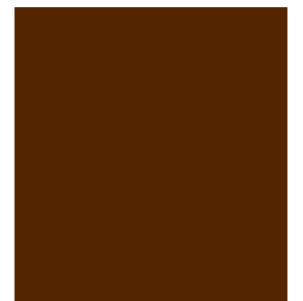
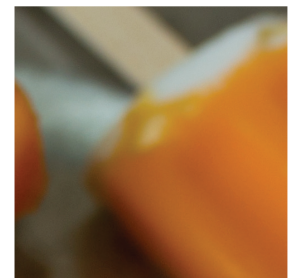
MARCH 5-6, 2021



## KEYNOTE SPEAKER:

**Dr. Jeremy Wallach**

**Jeremy Wallach** is a Professor of Popular Culture in the School of Cultural and Critical Studies at Bowling Green State University. A cultural anthropologist specializing in popular music and globalization, he has written or co-written more than thirty research articles; co-edited, with Esther Clinton, a special issue of *Asian Music* (2013); and authored the monograph *Modern Noise, Fluid Genres: Popular Music in Indonesia, 1997-2001* (Univ. of Wisconsin, 2008; Indonesian Ed., Komunitas Bambu, 2017). In 2011, he co-edited, with Harris M. Berger and Paul D. Greene, the collection *Metal Rules the Globe: Heavy Metal Music around the World* (Duke). In 2013, he chaired the organizing committee for the landmark BGSU Heavy Metal and Popular Culture International Conference. A co-founder and former chair of the Society for Ethnomusicology Popular Music Section, Dr. Wallach has given research presentations around the world.



## KEYNOTE PRESENTATION:

### Failures of Popular Culture Studies

Popular culture studies has spent so much time either defensively justifying its existence or celebrating itself that fundamental contradictions in the field remain unaddressed more than half a century into its existence. Dr. Wallach's presentation outlines his own 25-year intellectual journey navigating a course between the Scylla of critical arrogance and the Charybdis of uncritical fannish enthusiasm. He concludes by asserting that he has found the only way forward to be to acknowledge fully the political context in which popular culture scholars work in which most forms of popular culture are openly and mercilessly derided, and their own subject positions as both scholars and *active participants* in popular culture broadly defined.

#### ABOUT THE CONFERENCE

The Ray Browne Conference for Popular Culture Studies is an annual graduate student organized conference that invites participants to consider the study of popular culture as an approach, proposal, and practice.

*To our guests with disabilities, please indicate if you need special services, assistance or appropriate modifications to fully participate in this event by contacting Accessibility Services at [access@bgsu.edu](mailto:access@bgsu.edu) or 419-372-8495. Please notify us prior to the event.*