

---

# **American FactFinder Workshop**

**Meredith Porter**  
**Summer 2008**

---

---

# Goal of This Workshop

- The goal of this workshop is to *introduce* you to some of the features of American FactFinder.

---

# What is American FactFinder?

- Part of the US Census Bureau
  - [www.census.gov](http://www.census.gov)
  - [http://factfinder.census.gov/home/saff/main.html?\\_lang=en](http://factfinder.census.gov/home/saff/main.html?_lang=en)
-

---

# What is American FactFinder?

- *“...a self-service tool designed to deliver a wide variety of population, economic, geographic, and housing information about the United States to individuals, educators, businesses, governments, and organizations”*
-

# U.S. Census Bureau

[FAQs](#) | [Subjects A to Z](#) | [Help](#) | **SEARCH:**  [GO](#)



**LATEST**  
Race, Ethnic  
and Age  
Estimates

**New on the Site**

- Data Tools**
- American FactFinder**
- Jobs**
- Catalog**
- Publications**
- Are You in a Survey?**
- About the Bureau**
- Regional Offices**
- Doing Business with Us**
- Related Sites**



**2006**  
Annual Capital  
Expenditures  
Survey



**United States  
Census  
2010**

**People & Households**

[Estimates](#) • [Projections](#) • [Housing](#) • [Income](#) | [State Median Income](#) • [Poverty](#) • [Health Insurance](#) • [International](#) • [Genealogy](#) • [More](#)

**Business & Industry**

[Economic Census](#) • [Get Help with Your Form](#) • [Economic Indicators](#) • [NAICS](#) • [Survey of Business Owners](#) • [Government](#) • [E-Stats](#) • [Foreign Trade](#) | [Export Codes](#) • [Local Employment Dynamics](#) • [More](#)

**Geography**

[Maps](#) • [TIGER](#) • [Gazetteer](#) • [More](#)

**Newsroom**

[Releases](#) • [Facts For Features](#) • [Minority Links](#) • [Broadcast & Photo Services](#) • [Embargo/News Release Subscription](#) • [More](#)

**Special Topics**

[Census Bureau Data and Emergency Preparedness](#) • [Census Calendar](#) • [Training](#) • [For Teachers & Students](#) • [Statistical Abstract](#) • [FedStats](#) • [USA.gov](#)



**2006** Information & Communication  
Technology (ICT) Survey

**Data Finders**

[Population Clocks](#)

**U.S. 304,477,735**  
World 6,706,910,542  
14:53 GMT (EST+5) Jun 30, 2008

**Population Finder**

city/ town, county, or zip  
  
or state  
Select a state [GO](#)

**Find An Area Profile with QuickFacts**

Select a state to begin  
Select a state [GO](#)

**Latest Economic Indicators**

- [New Home Sales](#)
- [Advance Report on Durable Goods Manufacturers' Shipments, Inventories, and Orders](#)

**Economic Indicators**

Select an indicator  
Select an indicator [GO](#)

USCENSUSBUREAU  
Helping You Make Informed Decisions

[Accessibility](#) | [Information Quality](#) | [FOIA](#) | [Data Protection & Privacy Policy](#) | [U.S. Dept of Commerce](#)

## U.S. Census Bureau



American FactFinder

Main Search Feedback FAQs Glossary Site Map Help

*Your source for population, housing, economic, and geographic data*

POPULATION FINDER

FACT SHEET

PEOPLE

HOUSING

BUSINESS AND  
GOVERNMENT

ABOUT THE DATA

DATA SETS

DOWNLOAD CENTER

MAPS

TOOLS AND  
REFERENCES

Address Search...

Enter a [street address](#)  
to find Census 2000  
data

- [Browser Notes](#)
- [Confidentiality](#)
- [Citing FactFinder](#)

### Fast Access to Information



Get a **Fact Sheet** for your community...

city/town,  
county, or zip

state -- select a state --



[or select a state using a map >](#)

### Getting Detailed Data

**Decennial Census** - taken every 10 years to collect information about the people and housing of the United States  
[learn more](#) | [get data](#)

See the [Count Question Resolution Program](#) for information on Census 2000 count corrections.

**American Community Survey** - an ongoing survey that provides data about your community every year  
[learn more](#) | [get data](#)

**Puerto Rico Community Survey** - the equivalent of the American Community Survey for Puerto Rico  
[learn more](#) | [get data](#) | [en español](#)

**Population Estimates Program** - population numbers between censuses  
[learn more](#) | [get data](#)

**Economic Census** - profiles the U.S. economy every 5 years  
[learn more](#) | [get data](#)

**Annual Economic Surveys** - data from the Annual Survey of Manufactures, County Business Patterns and Nonemployer Statistics  
[learn more](#) | [get data](#)

### Special Interest



La Encuesta sobre la Comunidad de Puerto Rico y Censo 2000 Puerto Rico [en español](#)

[American Indian and Alaska Native data and links](#)

[FastFacts for Congress](#) - Demographic and economic data for Congressional Districts

[Kids' Corner](#) - Learn fun facts about your state and take a quiz  
Information on [Religion](#) and [Genealogy](#)

### Population Data

#### Population Finder

Use the [Population Finder](#) to view population trends for your community.

#### U.S. Population Clock



14:10 GMT (EST+5) Jun 26, 2008

**304,442,441**

more [population clocks >](#)

### What's New



#### 2007 Population

**Estimates** are expanded to include the demographic characteristics of age, race, sex and Hispanic Origin.  
[more >](#)

**2006 Puerto Rico Community Survey** data are now available for Puerto Rico in Spanish from the [Data Sets page](#).

**2006 Annual Survey of Manufactures** data are now available as [Data Sets](#) in American FactFinder.

**2006 American Community Survey (ACS)** Race, Ethnic, and Ancestry data complete the release of the 2006 American Community Survey (ACS). Click the Fact Sheet, People, and Housing links on the left menu.

**Updates to American FactFinder** released August 28, 2007. [more >](#)

**110th Congressional District Summary Files (Sample and 100-Percent)** Data from the Census 2000 Summary Files 1 and 3 retabulated for the newly drawn 110th Congressional District boundaries. [more >](#)

**Census 2000 State Legislative District Summary Files (Sample and 100-Percent)** Data from the Census 2000 Summary Files 1 and 3 retabulated using updated State Legislative District boundaries. [more >](#)

- 
- Obtain data in the form of maps, tables, and reports from a variety of Census Bureau sources.
    - Fact Sheet for quick access to basic demographic, social and economic data on your city, town, county or state or ZIP Code.
    - People to find more popular tables on a variety of topics (age, education, income, race and more) for your area.
-

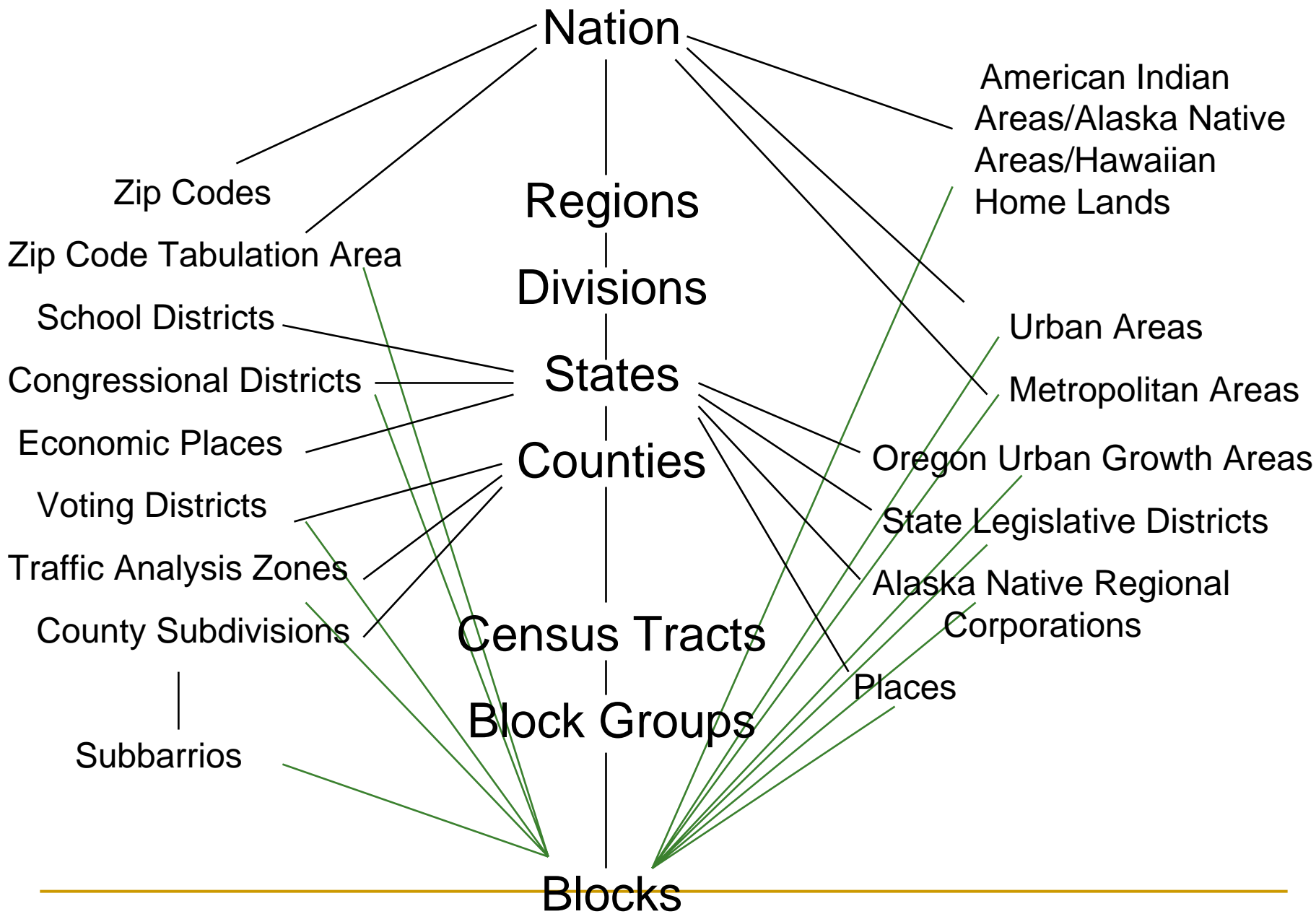
- 
- ❑ Housing to find popular tables on home values, ownership, housing characteristics and mortgage.
  - ❑ Business and Government for data on housing starts, government finances, foreign trade and more.
  - ❑ About the Data - Censuses and Surveys to learn more about how the Census Bureau organizes and presents data from many sources
-



- ❑ Data Sets - access to all data sets, tables, and maps available in American Factfinder
- ❑ Maps - access to Reference and Thematic Maps with tips on creating, using, downloading and printing maps in AFF
- ❑ Reference Shelf - resources, related sites and reports
- ❑ Tools - links to data manipulation tools
- ❑ Search box - here you can enter a keyword to find data, or enter the name of a geographic area, or click on 'enter a street address' to find data for your area.

# Geographic Areas

- FactFinder has data on various geographic areas and levels
- Largest geographic unit: Nation
- Smallest geographic unit: Block group
  - Collection of blocks



---

# What Data?

## 1. Decennial Census Data

- Collects once every 10 years
  - Includes information on:
    - Demographics (Sex, Race, Age, Number of Children, Nativity)
    - Socio-demographics (Marital Status, Education)
    - Household characteristics (Composition)
    - Economics (Income, Poverty Level)
    - More (Grandparents responsible for grandchildren, Disability, Language spoken at home, etc.)
-

---

# What Data?

## 2. American Community Survey

- Nationwide survey on communities
  - Collects same information as census
  - Sample data is collected every year instead of only once each decade
  - Includes the Puerto Rico Community Survey (PRCS)
-

---

# What Data?

## 3. Others.....

- The Economic Census
    - Every 5 years, provides detail about specific industries and the products they sell or buy
  - Annual Economic Surveys
    - Same as the Economic Census but done annually, quarterly, and monthly; measures economic activities (e.g. annual auto dealership sales)
  - Population Estimates
    - Publishes population estimates between the Censuses.
-

## U.S. Census Bureau



American FactFinder

Main Search Feedback FAQs Glossary Site Map Help

Your source for population, housing, economic, and geographic data

### POPULATION FINDER

### FACT SHEET

### PEOPLE

### HOUSING

### BUSINESS AND GOVERNMENT

### ABOUT THE DATA

### DATA SETS

### DOWNLOAD CENTER

### MAPS

### TOOLS AND REFERENCES

#### Address Search...

Enter a [street address](#) to find Census 2000 data

- [Browser Notes](#)
- [Confidentiality](#)
- [Citing FactFinder](#)

#### Fast Access to Information



Get a Fact Sheet for your community...

city/ town, county, or zip

state -- select a state -- GO

[or select a state using a map »](#)

#### Getting Detailed Data

**Decennial Census** - taken every 10 years to collect information about the people and housing of the United States  
[learn more](#) | [get data](#)

See the [Count Question Resolution Program](#) for information on Census 2000 count corrections.

**American Community Survey** - an ongoing survey that provides data about your community every year  
[learn more](#) | [get data](#)

**Puerto Rico Community Survey** - the equivalent of the American Community Survey for Puerto Rico  
[learn more](#) | [get data](#) | [en español](#)

**Population Estimates Program** - population numbers between censuses  
[learn more](#) | [get data](#)

**Economic Census** - profiles the U.S. economy every 5 years  
[learn more](#) | [get data](#)

**Annual Economic Surveys** - data from the Annual Survey of Manufactures and Nonemployer Statistics  
[learn more](#) | [get data](#)

#### Special Interest



La Encuesta sobre la Comunidad de Puerto Rico y Censo 2000 Puerto Rico [en español](#)

[American Indian and Alaska Native data and links](#)

[Kids' Corner](#) - Learn fun facts about your state and take a quiz

Information on [Religion](#) and [Genealogy](#)

#### Population Data

##### Population Finder

Use the [Population Finder](#) to view population trends for your community.

##### U.S. Population Clock



17:35 GMT (EST+5) Feb 02, 2007

**301,084,820**

[more population clocks »](#)

#### What's New



##### 2005 American Community Survey (ACS)

Race, Ethnic, and Ancestry data complete the release of the 2005 American Community Survey (ACS).

Click the [Fact Sheet](#), [People](#), and [Housing](#) links on the left menu.

**110th Congressional District Summary Files (Sample and 100-Percent)** Data from the Census 2000 Summary Files 1 and 3 retabulated for the newly drawn 110th Congressional District boundaries. [more »](#)

**Census 2000 State Legislative District Summary Files (Sample and 100-Percent)** Data from the Census 2000 Summary Files 1 and 3 retabulated using updated State Legislative District boundaries. [more »](#)

**2006 Population Estimates** for the U.S. and states are now available in American FactFinder. [more »](#)

**2005 Annual Survey of Manufactures** data are now available as [Data Sets](#) in American FactFinder.

**Updates to American FactFinder** released August 15, 2006. [more »](#)

[archive »](#)

Also see the Bureau's [latest news releases](#) and [The Broadcast Zone](#)

Population Clock:  
Most recent  
estimate of the U.S.  
population size

Tools available:  
Population  
Finder,  
Factsheet,  
Download Center,  
Maps, Data Sets

---

# How do I get the Data?

## 1. Do it yourself

- ❑ Download the data from the Census page and run your own analysis
  - ❑ Go to the Download Center
  - ❑ Follow Steps
-



## U.S. Census Bureau



American FactFinder

[Main](#) [Search](#) [Feedback](#) [FAQs](#) [Glossary](#) [Site Map](#) [Help](#)

Data Sets

POPULATION FINDER

FACT SHEET

PEOPLE

HOUSING

BUSINESS AND  
GOVERNMENT

ABOUT THE DATA

DATA SETS

DOWNLOAD CENTER

MAPS

TOOLS AND  
REFERENCES[Main](#) ► Download Center

## DOWNLOAD CENTER



The Download Center is designed for **experienced users** who need access to larger amounts of data than are available through other parts of American FactFinder.

Note that there can be large bandwidth and storage requirements when using the Download Center.

The following download methods are available:

- **Selected Tables** - select up to 50 tables for a geographic summary level. Format is a zipped, pipe-delimited file.
- **All Tables** - summary file extracts for predefined geographic summary levels (all counties in the U.S., all blocks in a county, etc.) in [summary file format](#).

The table below indicates which download methods are available for each data set.

☐ Select a Data Set

Data Set	Selected Tables	All Tables
<b>Census 2000</b>		
<a href="#">Census 2000 Summary File 1 (SF 1) 100-Percent Data</a>	✓	✓
<a href="#">Census 2000 Summary File 2 (SF 2) 100-Percent Data</a>	✓	
<a href="#">Census 2000 Summary File 3 (SF 3) - Sample Data</a>	✓	✓
<a href="#">Census 2000 Summary File 4 (SF 4) - Sample Data</a>	✓	
<a href="#">Census 2000 American Indian and Alaska Native Summary File (AIANSF) - Sample Data</a>	✓	
<a href="#">110th Congressional District Summary File (Sample)</a>	✓	✓
<a href="#">110th Congressional District Summary File (100-Percent)</a>	✓	✓
<a href="#">Census 2000 State Legislative District Summary File (Sample)</a>	✓	✓
<a href="#">Census 2000 State Legislative District Summary File (100-Percent)</a>	✓	✓
<a href="#">Census 2000 Redistricting Data (P.L. 94-171) Summary File</a>	✓	✓
<b>American Community Survey</b>		
<a href="#">2005 American Community Survey</a>	✓	
<a href="#">2004 American Community Survey</a>	✓	
<b>2006 Population Estimates and Projections</b>		
<a href="#">2006 Population Estimates</a>	✓	
<b>2005 Population Estimates and Projections</b>		
<a href="#">2005 Population Estimates</a>	✓	
<b>Economic Census</b>		
<a href="#">2002 Economic Census and Surveys FTP page</a>		
<b>Annual Economic Surveys</b>		
<a href="#">2003 Economic Surveys FTP page</a>		
<a href="#">2004 Economic Surveys FTP page</a>		

Click on "Download Center"

Click on data set of interest

---

# How do I get the Data?

## 2. Factsheet

- Fast Access to information
- Enter a geographic area (state, zip code, etc) to get quick information about various community characteristics

Question: How many Hispanics live in Bowling Green?

---

American FactFinder - Microsoft Internet Explorer

File Edit View Favorites Tools Help

Back Forward Stop Home Search Favorites Reload Mail Print View Source Address Book

Address [http://factfinder.census.gov/home/saff/main.html?\\_lang=en](http://factfinder.census.gov/home/saff/main.html?_lang=en) Go Links

# U.S. Census Bureau

## American FactFinder

Main Search Feedback FAQs Glossary Site Map Help

*Your source for population, housing, economic, and geographic data*

### POPULATION FINDER

### FACT SHEET

### PEOPLE

### HOUSING

### BUSINESS AND GOVERNMENT

### ABOUT THE DATA

### DATA SETS

### DOWNLOAD CENTER

### MAPS

### TOOLS AND REFERENCES

### Address Search...

Enter a [street address](#) to find Census 2000 data

- [Browser Notes](#)
- [Confidentiality](#)
- [Citing FactFinder](#)

### Fast Access to Information

Get a Fact Sheet for your community...

city/ town, county, or zip

state

[or select a state using a map »](#)

### Getting Detailed Data

**Decennial Census** - taken every 10 years to collect information about the people and housing of the United States  
[learn more](#) | [get data](#)

See the [Count Question Resolution Program](#) for information on Census 2000 count corrections.

**American Community Survey** - an ongoing survey that provides data about your community every year  
[learn more](#) | [get data](#)


**Puerto Rico Community Survey** - the equivalent of the American Community Survey for Puerto Rico  
[learn more](#) | [get data](#) | [en español](#)

**Population Estimates Program** - population numbers between censuses  
[learn more](#) | [get data](#)

**Economic Census** - profiles the U.S. economy every 5 years  
[learn more](#) | [get data](#)

**Annual Economic Surveys** - data from the Annual Survey of Manufactures and Nonemployer Statistics  
[learn more](#) | [get data](#)

### Special Interest

 La Encuesta sobre la Comunidad de Puerto Rico y Censo 2000 Puerto Rico [en español](#)  
[American Indian and Alaska Native data and links](#)  
[Kids' Corner](#) - Learn fun facts about your state and take a quiz  
Information on [Religion](#) and [Genealogy](#)

### Population Data


#### Population Finder

Use the [Population Finder](#) to view population trends for your community

#### U.S. Population Clock

17:35 GMT (EST+5) Feb 02, 2007  
**301,084,820**  
[more population clocks »](#)

#### What's New

 **2005 American Community Survey (ACS)**  
Race, Ethnic, and Ancestry data complete the release of the 2005 American Community Survey (ACS).  
Click the Fact Sheet, People, and Housing links on the left menu.

**110th Congressional District Summary Files (Sample and 100-Percent)** Data from the Census 2000 Summary Files 1 and 3 retabulated for the newly drawn 110th Congressional District boundaries. [more »](#)

**Census 2000 State Legislative District Summary Files (Sample and 100-Percent)** Data from the Census 2000 Summary Files 1 and 3 retabulated using updated State Legislative District boundaries. [more »](#)

**2006 Population Estimates** for the U.S. and states are now available in American FactFinder. [more »](#)

**2005 Annual Survey of Manufactures** data are now available as [Data Sets](#) in American FactFinder.

**Updates to American FactFinder** released August 15, 2006. [more »](#)

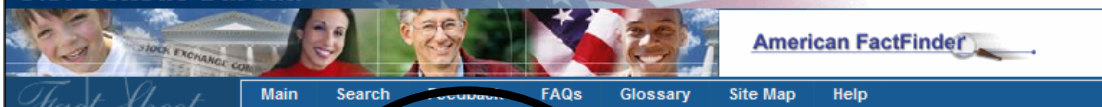
[archive »](#)

Enter city "Bowling Green"

Enter state "Ohio"

Click on "Go"

## U.S. Census Bureau



## POPULATION FINDER

## FACT SHEET

- Fact Sheet
- Fact Sheet for a Race, Ethnic, or Ancestry Group

## PEOPLE

## HOUSING

## BUSINESS AND GOVERNMENT

## ABOUT THE DATA

## DATA SETS

## DOWNLOAD CENTER

## MAPS

## TOOLS AND REFERENCES

## FACT SHEET

[United States](#) | [Ohio](#) | Bowling Green city

## Bowling Green city, Ohio

city/ town, county, or zip

bowling green

state

Ohio

GO

[search by address »](#)

2000 2005 data not available for this geography

View a Fact Sheet for a [race, ethnic, or ancestry group](#)

## Census 2000 Demographic Profile Highlights:

[Reference Map](#)General Characteristics - [show more >>](#)

	Number	Percent	U.S.		
Total population	29,636			<a href="#">map</a>	<a href="#">brief</a>
Male	13,865	46.8	49.1%	<a href="#">map</a>	<a href="#">brief</a>
Female	15,771	53.2	50.9%	<a href="#">map</a>	<a href="#">brief</a>
Median age (years)	22.4	(X)	35.3	<a href="#">map</a>	<a href="#">brief</a>
Under 5 years	1,089	3.7	6.8%	<a href="#">map</a>	
18 years and over	25,756	86.9	74.3%		
65 years and over	2,266	7.6	12.4%	<a href="#">map</a>	<a href="#">brief</a>
One race	29,203	98.5	97.6%		
White	27,219	91.8	75.1%	<a href="#">map</a>	<a href="#">brief</a>
Black or African American	837	2.8	12.3%	<a href="#">map</a>	<a href="#">brief</a>
American Indian and Alaska Native	62	0.2	0.9%	<a href="#">map</a>	<a href="#">brief</a>
Asian	543	1.8	3.6%	<a href="#">map</a>	<a href="#">brief</a>
Native Hawaiian and Other Pacific Islander	5	0.0	0.1%	<a href="#">map</a>	<a href="#">brief</a>
Some other race	537	1.8	2.3%	<a href="#">map</a>	
Two or more races	433	1.5	2.4%	<a href="#">map</a>	<a href="#">brief</a>
Hispanic or Latino (of any race)	1,031	3.5	12.5%	<a href="#">map</a>	<a href="#">brief</a>
Household population	22,685		97.2%	<a href="#">map</a>	<a href="#">brief</a>
Group quarters population	6,951	23.5	2.8%	<a href="#">map</a>	
Average household size	2.21	(X)	2.59	<a href="#">map</a>	<a href="#">brief</a>
Average family size	2.84	(X)	3.14	<a href="#">map</a>	
Total housing units	10,667			<a href="#">map</a>	
Occupied housing units	10,266	96.2	91.0%		<a href="#">brief</a>
Owner-occupied housing units	4,334	42.2	66.2%	<a href="#">map</a>	
Renter-occupied housing units	5,932	57.8	33.8%	<a href="#">map</a>	<a href="#">brief</a>
Vacant housing units	401	3.8	9.0%	<a href="#">map</a>	

Social Characteristics - [show more >>](#)

	Number	Percent	U.S.		
Population 25 years and over	11,799				
High school graduate or higher	10,761	91.2	80.4%	<a href="#">map</a>	<a href="#">brief</a>
Bachelor's degree or higher	5,210	44.2	24.4%	<a href="#">map</a>	
Civilian veterans (civilian population 18 years and over)	1,620	6.3	12.7%	<a href="#">map</a>	<a href="#">brief</a>
Disability status (population 5 years and over)	3,251	11.6	19.3%	<a href="#">map</a>	<a href="#">brief</a>

3.5 percent of the population in BG is Hispanic or Latino

---

# How do I get the Data?

## 3. Use the Data Sets button

- Choose the correct dataset
    - Depends on the question
  - What format do I want the data in?
    - Custom Tables
    - Reference Maps
    - Thematic Maps
-

## U.S. Census Bureau



American FactFinder

[Main](#) [Search](#) [Feedback](#) [FAQs](#) [Glossary](#) [Site Map](#) [Help](#)[Main](#) ▶ [Data Sets](#)

POPULATION FINDER

FACT SHEET

PEOPLE

HOUSING

BUSINESS AND  
GOVERNMENT

ABOUT THE DATA

DATA SETS

- Decennial Census
- American Community Survey
- Puerto Rico Community Survey
- Annual Population Estimates
- Economic Census
- Annual Economic Surveys

DOWNLOAD CENTER

MAPS

TOOLS AND  
REFERENCES

DECENNIAL

[Load Query](#) | [Clear all selections](#)


Census 2000

1990 Census

The Decennial Census occurs every 10 years, in years ending in zero, to count the population and housing units for the entire United States. Its primary purpose is to provide the population counts that determine how seats in the U.S. House of Representatives are apportioned. [more...](#)

## Other Resources

- [Census 2000 Gateway](#)
- [Count Question Resolution \(PDF - 45 KB\)](#)
- [Census 2000 Notes and Errata \(PDF - 2.2 MB\)](#)
- [Download Center](#)
- Download data sets via [FTP](#)

 [Explain Table and Map Formats](#)

2000

☐ Census 2000 Summary File 1 (SF 1) 100-Percent Data

Summary File 1 presents counts and information [age, sex, race, Hispanic/Latino origin, household relationship, whether residence is owned or rented] collected from all people and housing units.

☐ Census 2000 Summary File 2 (SF 2) 100-Percent Data

Population and housing characteristics iterated for many detailed race and Hispanic or Latino categories, and American Indian and Alaska Native tribes.

[SF 2 Thresholds](#)☒ Census 2000 Summary File 3 (SF 3) - Sample Data

Summary File 3 presents detailed population and housing data (such as place of birth, education, employment status, income, value of housing unit, year structure built) collected from a 1-in-6 sample and weighted to represent the total population.

[Comparing SF 3 Estimates with Corresponding Values in SF 1 and SF 2](#)☐ Census 2000 Summary File 4 (SF 4) - Sample Data

Summary File 4 contains tabulations of population and housing data collected from a sample of the population. The data are shown down to the census tract level for 336 race, Hispanic or Latino, American Indian and Alaska Native, and ancestry categories.

[SF 4 Thresholds](#)

Select from the following:

[Detailed Tables](#)  
[Geographic Comparison Tables](#)  
[Quick Tables](#)  
[Thematic Maps](#)  
[Reference Maps](#)  
[Custom Table](#)

[Enter a table number](#)  
[List all tables](#)  
[List all maps](#)  
[About this data set](#)  
[Technical Documentation \(PDF\)](#)

Choose a Dataset

- Tables
- Reference Maps
- Thematic Maps

---

# Tables

- Different types of tables
  - Custom, Detailed, Quick, Geographic Comparison Tables, etc
- Depends on the question and dataset from which the data is taken

Question: How many marriageable men are in BG?

---



1. Select Dataset

2. Select File

3. Select Table Type "Custom"



American FactFinder - Microsoft Internet Explorer

File Edit View Favorites Tools Help

Address [http://factfinder.census.gov/servlet/CTGeoSearchByListServlet?ds\\_name=DEC\\_2000\\_SF3\\_U&lang=en&ts=188487256730](http://factfinder.census.gov/servlet/CTGeoSearchByListServlet?ds_name=DEC_2000_SF3_U&lang=en&ts=188487256730) Go Links

**U.S. Census Bureau**  
**American FactFinder**

Main Search Feedback FAQs Glossary Site Map Help

### Select Geography

You are here: [Main](#) > [Data Sets](#) > [Data Sets with Custom Tables](#) > [Geography](#) > Data Elements > Filters > Results  
Census 2000 Summary File 3 (SF 3) - Sample Data, Custom Table

Choose a selection method

[list](#) [name search](#) [address search](#) [map](#) [geo within geo](#)

[Show all geography types](#) | [Explain Census Geography](#)

Select a [geographic type](#)

..... Place

Select a state

Ohio

Select one or more geographic areas and click 'Add'

All Places  
Aberdeen village  
Ada village  
Adamsville village  
Addyston village  
Adelphi village  
Adena village  
Akron city

Map It

Add

Current geography selections:

==== Place =====  
Bowling Green city, Ohio

Remove

Next


- Select the geographic type "Place" (aka "city")
- Select the state "Ohio"
- Select the place "Bowling Green City"
- Click on "Add"
- Click on "Next"

American FactFinder - Microsoft Internet Explorer

File Edit View Favorites Tools Help

Back Forward Stop Home Search Favorites Print Mail

Address [http://factfinder.census.gov/servlet/CustomTableServlet?\\_ts=188490974058](http://factfinder.census.gov/servlet/CustomTableServlet?_ts=188490974058) Go Links

 **U.S. Census Bureau**  
**American FactFinder**

Main Search Feedback FAQs Glossary Site Map Help

**Select Data Elements**

You are here: [Main](#) > [Data Sets](#) > [Data Sets with Custom Tables](#) > [Geography](#) > [Data Elements](#) > [Filters](#) > [Results](#)  
Census 2000 Summary File 3 (SF 3) - Sample Data, Custom Table

Choose a data element selection method

**from a table** search

Choose a table selection method

show all tables **by subject** by keyword

Select a table and click 'Go'

P13. Household Type by Age of Householder
P14. Household Type by Household Size
P15. Family Type by Presence of Own Children <18 Years by Age of Own Children
P16. Own Children <18 Years by Family Type by Age
P17. Family Type by Presence of Related Children <18 Years by Age of Related Children
<b>P18. Sex by Marital Status for the Population 15+ Years</b>
P19. Age by Language Spoken at Home by Ability to Speak English for the Population 5+ Years
P20. Household Language by Linguistic Isolation
P21. Place of Birth by Citizenship Status
P22. Year of Entry for the Foreign-Born Population

Abbreviations:  
Black - Black or African American  
AIAN - American Indian and Alaska Native  
NHPI - Native Hawaiian and Other Pacific Islander  
SOR - Some Other Race

What's this?

Go

- Select a table of interest, e.g. “Sex by Marital Status for the Population 15+ Years”
- Or search by subject or keyword, e.g. marital status
- Click on “Go”

American FactFinder - Microsoft Internet Explorer

File Edit View Favorites Tools Help

Back Forward Stop Home Search Favorites

Address [http://factfinder.census.gov/servlet/CustomTableServlet?\\_ts=188491565133#ctElements](http://factfinder.census.gov/servlet/CustomTableServlet?_ts=188491565133#ctElements) Go Links

**American FactFinder** Main Search Feedback FAQs Glossary Site Map Help

### Select Data Elements

You are here: [Main](#) > [Data Sets](#) > [Data Sets with Custom Tables](#) > [Geography](#) > [Data Elements](#) > [Filters](#) > [Results](#)  
Census 2000 Summary File 3 (SF 3) - Sample Data, Custom Table

Choose a data element selection method

[from a table](#) [search](#)

Choose a table selection method

[show all tables](#) [by subject](#) [by keyword](#)

Select a table and click 'Go'

P18. Sex by Marital Status for the Population 15+ Years  
P19. Age by Language Spoken at Home by Ability to Speak English for the Population 5+ Years  
P20. Household Language by Linguistic Isolation  
P21. Place of Birth by Citizenship Status  
P22. Year of Entry for the Foreign-Born Population  
P23. Year of Entry by Citizenship Status for the Foreign-Born Population  
P24. Residence in 1995 for the Population 5+ Years--State and County Level  
P25. Residence in 1995 for the Population 5+ Years--MSA/PMSA Level  
P26. Place of Work for Workers 16+ Years--State and County Level  
P27. Place of Work for Workers 16+ Years--Place Level

Abbreviations:  
Black - Black or African American  
AIAN - American Indian and Alaska Native  
NHPI - Native Hawaiian and Other Pacific Islander  
SOR - Some Other Race

[What's this?](#)  
[Go](#)

Select one or more data elements and click 'Add'

P18. SEX BY MARITAL STATUS FOR THE POPULATION 15 YEARS AND OVER [19]  
Universe: Population 15 years and over

☐ Total:  
☐ Male:  
☐ Never married  
☐ Now married:  
☐ Married, spouse present  
☐ Married, spouse absent:  
☐ Separated

[Add](#)

Current data element selections:

- ☒ P018002 - Population 15 years and over: Male
- ☒ P018003 - Population 15 years and over: Male; Never married
- ☒ P018004 - Population 15 years and over: Male; Now married
- ☒ P018009 - Population 15 years and over: Male; Widowed
- ☒ P018010 - Population 15 years and over: Male; Divorced

[Remove](#)  
[Next](#)

- Select the data elements of interest
- Click on “Add” or “Remove”
- Click on “Next”

## Custom Table

You are here: [Main](#) > [Data Sets](#) > [Data Sets with Custom Tables](#) > [Geography](#) > [Data Elements](#) > [Filters](#) > [Results](#)

Use the links above to change your results


[Options](#) | [Print / Download](#) |

Data Set: [Census 2000 Summary File 3 \(SF 3\) - Sample Data](#)

Result contains 1 row.

	P018002	P018003	P018004	P018009	P018010
	Population 15 years and over: Male	Population 15 years and over: Male; Never married	Population 15 years and over: Male; Now married	Population 15 years and over: Male; Widowed	Population 15 years and over: Male; Divorced
Bowling Green city, Ohio	12,382	6,872	4,744	190	576

NOTE: A hyphen (-) indicates that data are not available for this geographic area for the selected data element (column) in your custom table. Please consult the [Census 2000 Summary File 3 \(SF 3\) - Sample Data Technical Documentation \(PDF 6.92MB\)](#) for more information.

The letters PDF or symbol  indicate a document is in the [Portable Document Format \(PDF\)](#). To view the file you will need the [Adobe® Acrobat® Reader](#), which is available for **free** from the Adobe web site.

Download data  
into Excel

The number of marriageable men in Bowling Green over the age of 15 years:

- Never Married = 6872
- Widowed = 190
- Divorced = 576

---

# Reference Maps

- Reference maps show selected boundaries for an area for which data have been tabulated
  - Boundary selections include
    - Census tracts
    - School districts
    - Native American tribal boundaries
    - Voting Districts
    - More . . . . .
  - Click on Maps → Reference maps
-

[Main](#) ▶ [Reference Maps](#)

## REFERENCE MAPS

Reference Maps show selected geographic boundaries for an area along with orienting features, such as roads. Boundary selections are available for geographic areas for which statistical data have been tabulated. For quick access to Reference Maps, choose from the selections below.

Select a boundary grouping:

- ☒ 2006 Cities and Towns
- ☐ 2000 Census Tracts and Blocks
- ☐ 110th Congressional Districts
- ☐ 2000 Metropolitan Areas
- ☐ 2002 Economic Places
- ☐ 2000 American Indian Areas

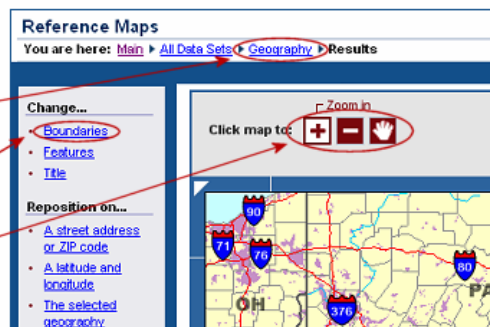
Select a state or enter a ZIP code. Click 'GO'.

State:  ZIP code:

### Working with Reference Maps

You can change the view of the Reference Map by:

- selecting a different geographic area by using the link at the top of the page
- changing the boundaries displayed on the map by clicking the boundaries link
- clicking on the zoom and pan buttons, then clicking or dragging the map



For help with using Reference Maps, see the [Creating and Using Maps Tutorial](#).

Source: **U.S. Census Bureau**. Last Revised: May 22, 2007

Census Bureau Links: [Home](#) • [Search](#) • [Subjects A-Z](#) • [FAQs](#) • [Data Tools](#) • [Catalog](#) • [Census 2000](#) • [Quality](#) • [Privacy Policy](#) • [Contact Us](#)

USCENSUSBUREAU

Helping You Make Informed Decisions

Enter state or zip code



Change...

- [Boundaries and features](#)

Reposition on...

- [A street address or ZIP code](#)
- [A latitude and longitude](#)
- [The selected geography](#)

[Quick tips](#)

Legend

**Boundaries**

- State
- '05 County
- '05 Co Sub
- '05 Place
- '05 Place
- '05 Con City
- '00 Urban Area
- '00 Urban Area

**Features**

- Major Road
- Street
- Stream/Waterbody
- Stream/Waterbody

Click map to:

Zoom: 7 miles across

U.S. Street

Approx. 7 miles across.

WEST EAST

NORTH SOUTH

Download or print map

Zoom in or out

Choose other boundaries or features

---

# Thematic Maps

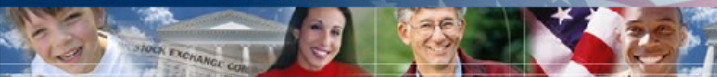
- Show interesting facts about places by using colors or patterns to shade areas on the map
- Used to show statistical data, such as population living in poverty or median income, displayed on a map

Question: How do the earnings for women in Wood county compare to the rest of Ohio?

---



## U.S. Census Bureau



American FactFinder

Main Search Feedback FAQs Glossary Site Map Help

## POPULATION FINDER

## FACT SHEET

## PEOPLE

## HOUSING

BUSINESS AND  
GOVERNMENT

## ABOUT THE DATA

## DATA SETS

- Decennial Census
- American Community Survey
- Puerto Rico Community Survey
- Annual Population Estimates
- Economic Census
- Annual Economic Surveys

## DOWNLOAD CENTER

## MAPS

TOOLS AND  
REFERENCES

Main Data Sets

## DECENNIAL

[Load Query](#) | [Clear all selections](#)

Census 2000

1990 Census

The Decennial Census occurs every 10 years, in years ending in zero, to count the population and housing units for the entire United States. Its primary purpose is to provide the population counts that determine how seats in the U.S. House of Representatives are apportioned. [more...](#)

## Other Resources

- [Census 2000 Gateway](#)
- [Count Question Resolution \(PDF - 45 KB\)](#)
- [Census 2000 Notes and Errata \(PDF - 2.2 MB\)](#)
- [Download Center](#)
- Download data sets via [FTP](#)

[i Explain Table and Map Formats](#)

## 2000

☐ Census 2000 Summary File 1 (SF 1) 100-Percent Data

Summary File 1 presents counts and information [age, sex, race, Hispanic/Latino origin, household relationship, whether residence is owned or rented] collected from all people and housing units.

☐ Census 2000 Summary File 2 (SF 2) 100-Percent Data

Population and housing characteristics iterated for many detailed race and Hispanic or Latino categories, and American Indian and Alaska Native tribes.

[SF 2 Thresholds](#)☒ Census 2000 Summary File 3 (SF 3) - Sample Data

Summary File 3 presents detailed population and housing data (such as place of birth, education, employment status, income, value of housing unit, year structure built) collected from a 1-in-6 sample and weighted to represent the total population.

[Comparing SF 3 Estimates with Corresponding Values in SF 1 and SF 2](#)☐ Census 2000 Summary File 4 (SF 4) - Sample Data

Summary File 4 contains tabulations of population and housing data collected from a sample of the population. The data are shown down to the census tract level for 336 race, Hispanic or Latino, American Indian and Alaska Native, and ancestry categories.

[SF 4 Thresholds](#)

Select from the following:

- [Detailed Tables](#)
- [Geographic Comparison Tables](#)
- [Quick Tables](#)
- [Thematic Maps](#)
- [Reference Maps](#)
- [Custom Table](#)

- [Enter a table number](#)
- [List all tables](#)
- [List all maps](#)
- [About this data set](#)
- [Technical Documentation \(PDF\)](#)

Choose a dataset

Choose Thematic  
Maps

# U.S. Census Bureau

American FactFinder

[Main](#)
[Search](#)
[Feedback](#)
[FAQs](#)
[Glossary](#)
[Site Map](#)
[Help](#)
**Thematic Maps**You are here: [Main](#) > [Data Sets](#) > [Data Sets with Thematic Maps](#) > [Geography](#) > [Themes](#) > [Results](#)
[Print / Download](#)
[Related Items](#)
**Change...**

- [Data Classes](#)
- [Boundaries and features](#)

**Reposition on...**

- [A street address or ZIP code](#)
- [A latitude and longitude](#)
- [The selected geography](#)

[Quick tips](#)**Legend****Data Classes**

Dollars
18813 - 21346
21546 - 22859
23203 - 25137
25493 - 27613
28395 - 33044

**Features**

- Major Road
- Street
- Stream/Waterbody
- Stream/Waterbody

Items in gray text  
are not visible  
at this zoom level

**TM-PCT051. Median Earnings of Female Full-Time, Year-Round Workers in 1999:**

2000 ?

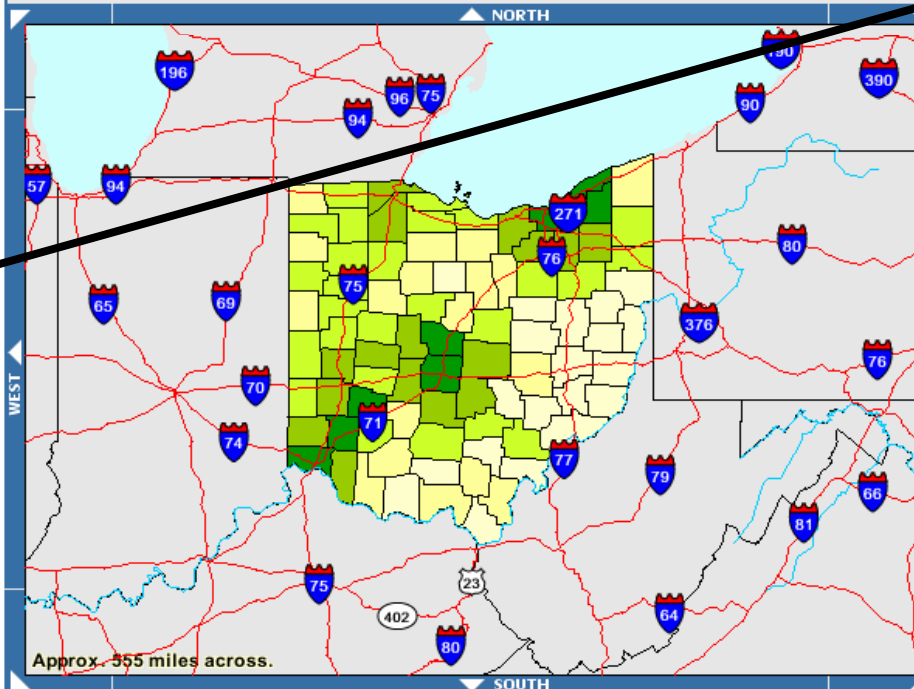
Universe: Females 16 years and over with earnings in 1999

Data Set: Census 2000 Summary File 3 (SF 3) - Sample Data

**Ohio by County**

NOTE: Data based on a sample except in P3, P4, H3, and H4. For information on confidentiality protection, sampling error, nonsampling error, definitions, and count corrections see <http://factfinder.census.gov/home/en/datanotes/expsf3.htm>.

Click map to: Identify - geo name and data value


 Zoom: 555 miles across  
U.S. Street
Display map by: 

Download or  
print map

Zoom

Legend

Median Earnings for  
Women in Wood  
County

\$25,493 - \$27,613

---

...and so much more!

- Please take time (now or in the future) to explore what FactFinder has to offer.

---

# Upcoming Workshop

## ***Grant Writing***

- This workshop will guide you through the stages of planning and executing a grant proposal that clearly explains your potential unique contribution to research. From the early stages of defining the significance of your project and assessing the feasibility to the final stages of planning a budget and routing the proposal, this workshop will focus especially on grant-writing advice for more junior colleagues who are preparing their first internal and external funding proposals.
  - Instructor: Dr. Wendy Manning
  - Date: **Monday, July 21**
  - Time: 12:00-1:00 pm
  - Location: Bowen-Thompson Student Union, Room 314
-