

The Shifting Geography of Divorce: Divorce Rates Across Counties and States 2000-2010

Wendy D. Manning (wmanning@bgsu.edu), Krista K. Payne, Gwendolyn Zugarek, Bart Stykes

Department of Sociology
Bowling Green State University



Introduction

- Limited data on divorce at the county level in the United States
 - NVSS data are incomplete
 - ACS county-level data span 3-5 years and not made available for all counties
- 2007-12—a time span with an immense economic crisis. Potentially grave consequences for marriage and divorce

Rationale

- Contrast NVSS state-level and ACS state-level divorce rates
- No national collection of county marriage or divorce statistics
- Local level analysis provides new insights into marriage and divorce

Research Goals

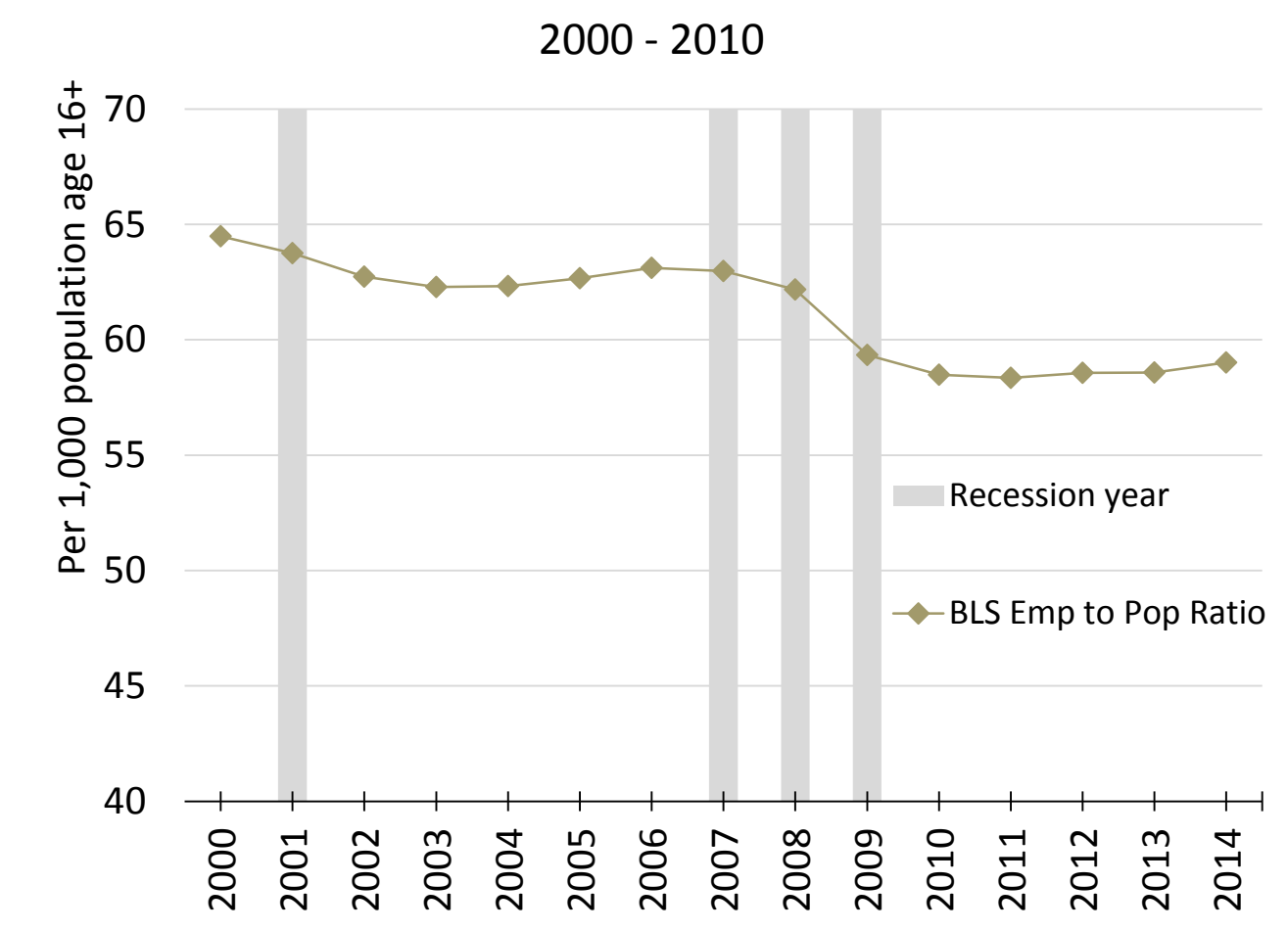
EXAMINE

- Changing geography of county-level divorce
- Associations between divorce rates and unemployment rate as well as the employment to population ratio

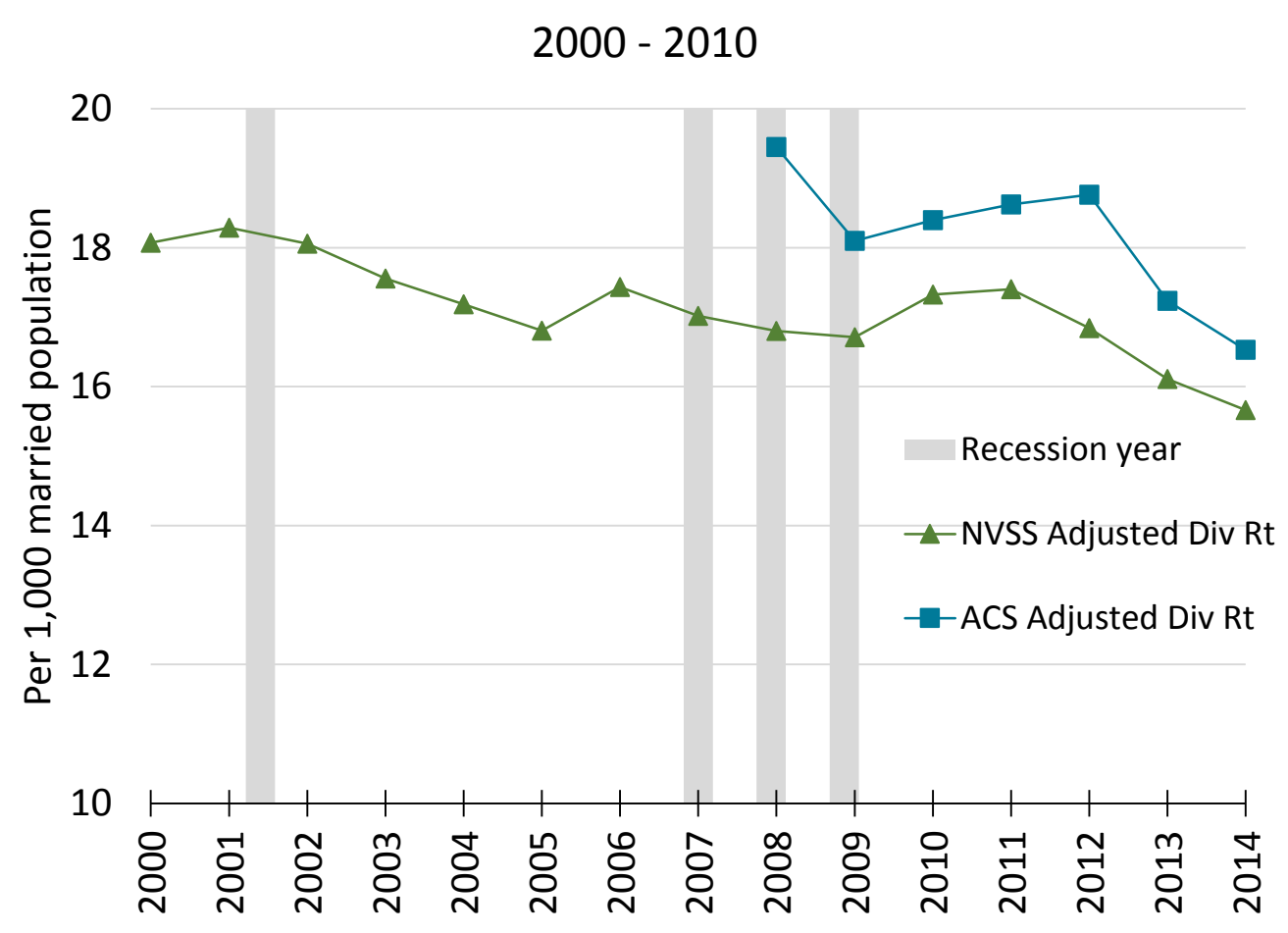
DEMONSTRATE

- Value of county-level data: which geographic unit best captures variation in divorce rates, the state or county?

Employment To Population Ratio



Adjusted Divorce Rate



Multi-Level-Model Results

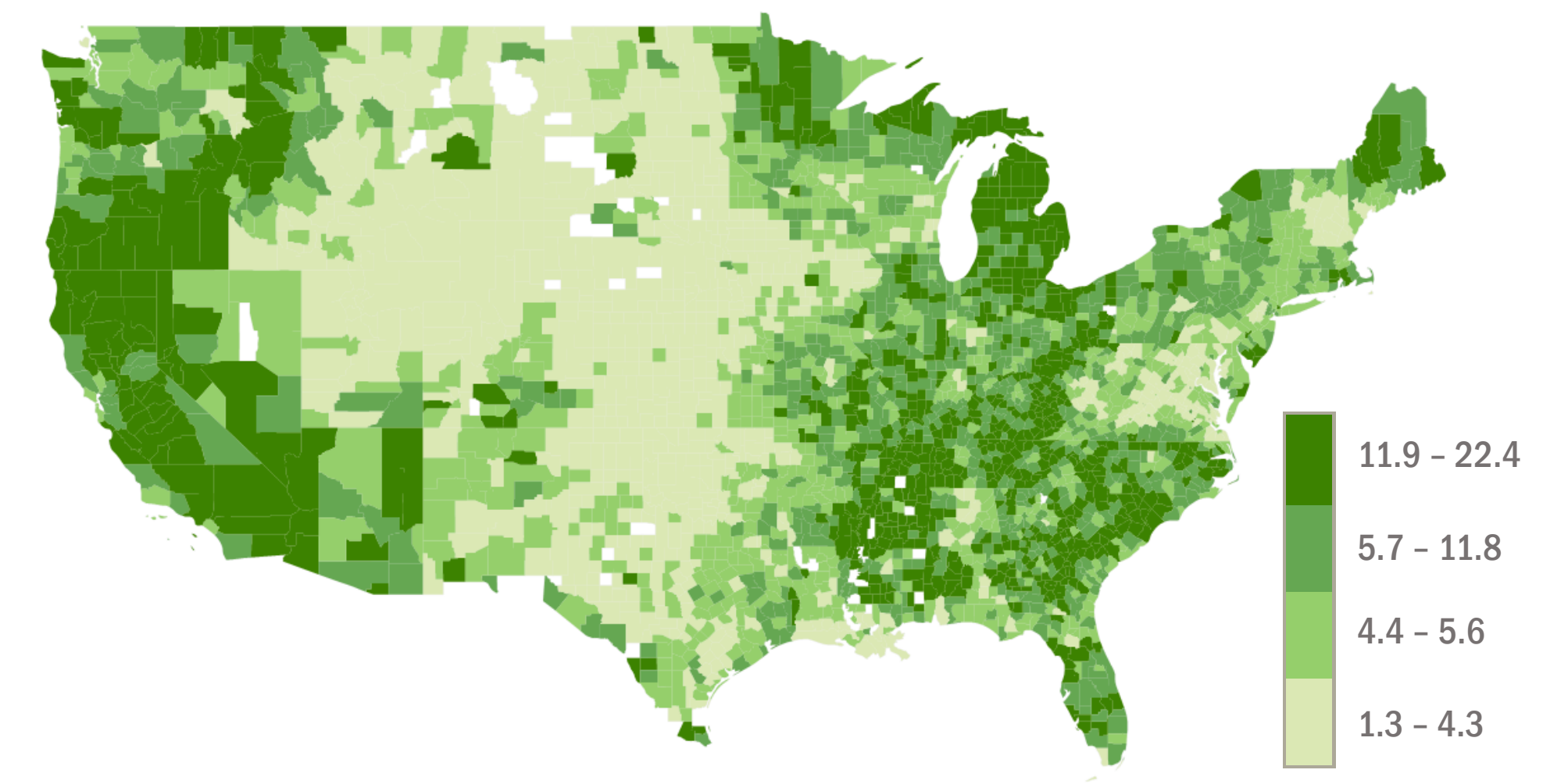
Multi-level Analyses of Unemployment and Divorce

	Model 1	Model 2	Model 3
State-level Predictors			
Intercept	18.0 *** (0.7)	15.8 *** (1.4)	11.8 * (5.6)
Unemployment rate		0.4 † (0.2)	1.1 (1.0)
County-level Predictors			
Unemployment rate			43.5 (1.0)
Variance Components			
Level 2 (state-level)	18.0 (5.0)	16.8 (4.8)	1349.3 (312.5)
Level 1 (county-level)	367.3 (9.4)	367.2 (9.4)	324.2 (8.4)
Intraclass Corr. Coefficient			
	0.05	0.04	0.80
Model Fit Statistics			
Deviance	27221	27218	26971
AIC	27227	27226	26984
BIC	27245	27250	27020

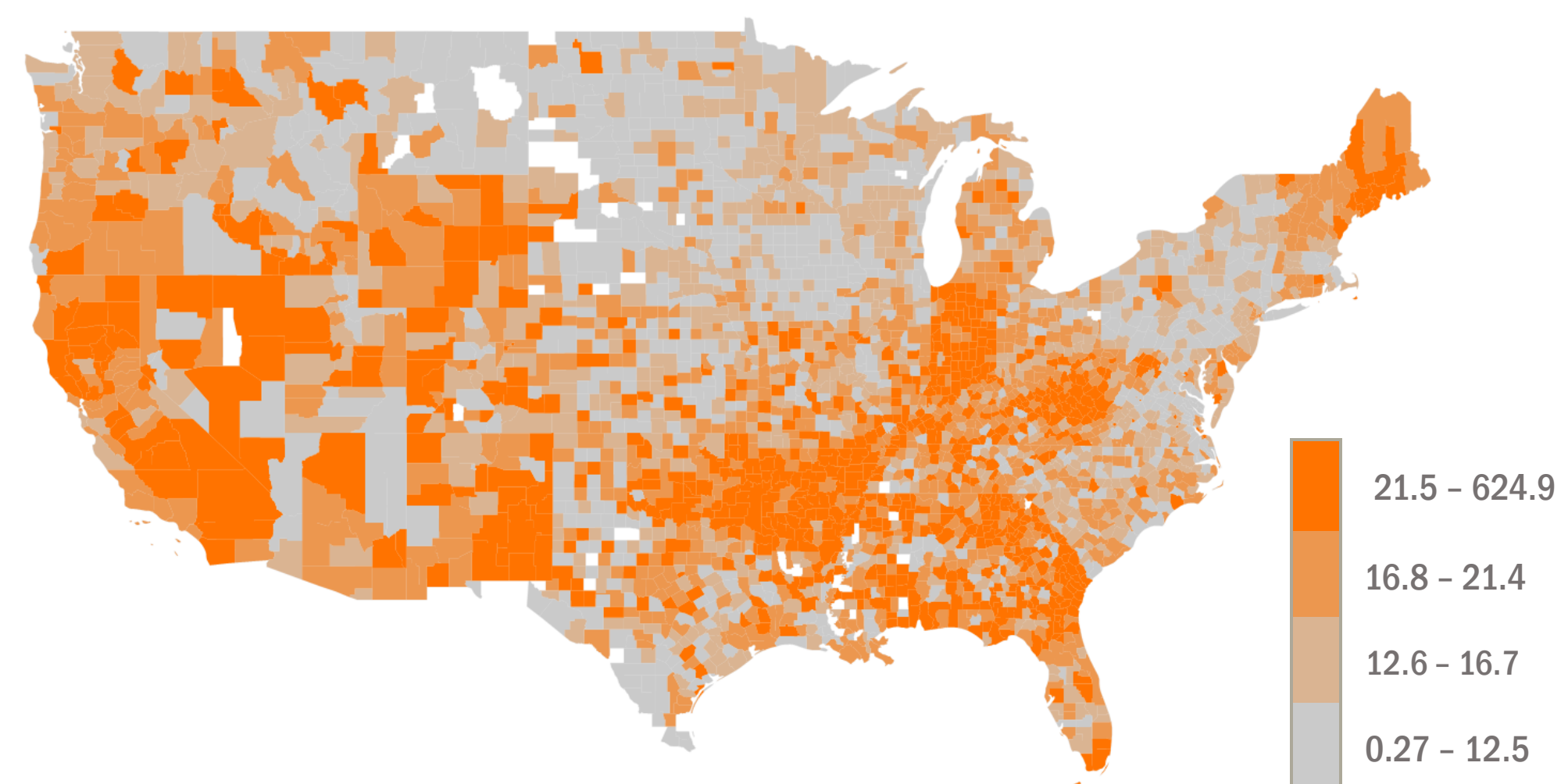
Data

- NCFMR Data Compass – County-level indicator database
 - County-level counts of divorces occurring in 2010 (numerator), Amassed by NCFMR
 - ACS 1-3-5 yr. est. of marital status (denominator)
 - Unemployment rate and Employment to population ratio, LAUS, BLS data
- Analytic Sample includes counties with consistent geographical boundaries and valid data in 2010 (n=3,077)

County-level Unemployment Rate, 2008



County-level Divorce Rate, 2010



Discussion

- Geographic variation in divorce rates. Ranges from 0.27 (Manassas, VA) to 624.9 (Cameron, PA) per 1,000 married
- County-level estimates are limited and inaccurate using ACS data
- More variation in divorce rate within states than between states
- County-level unemp. rate and divorce provides a better model fit than state-level and accounts for most of the within state variation (M3)