

Marriage-to-Divorce Ratio in the U.S.

Geographic Variation, 2015



Huijing Wu

2,298,977 : **1,110,579**
 NUMBER of MARRIAGES : NUMBER of DIVORCES

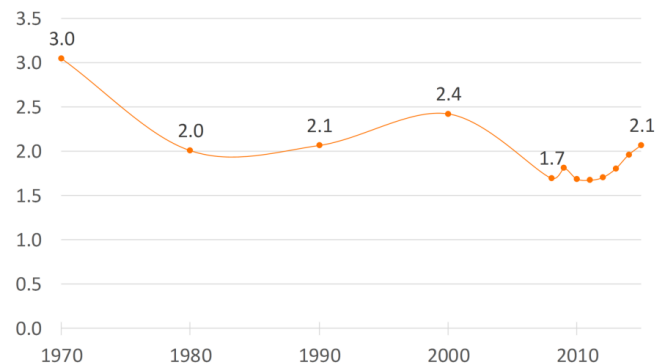
*2 Marriages per
every 1 Divorce*



Marriage-to-Divorce Ratio in the U.S., 2015

- In 2015, there were roughly two marriages for every divorce in the United States. There were 2,298,977 marriages and 1,110,579 divorces.
- During the period observed in this profile, the marriage-to-divorce ratio was highest in 1970. Since 1970, the marriage-divorce ratio has shown an overall decline. From 2008 through 2013, the ratio hovered between 1.7 and 1.8 and in 2014 was 2.0. The current ratio is similar to that seen in 1980 and 1990. In 1980, there were 2,390,252 marriages and 1,189,000 divorces.

Figure 1. Women's Marriage to Divorce Ratio, 1970 - 2015



Sources: 1970-2000, National Center for Health Statistics; 2008-2015, U.S. Census Bureau, American Community Survey 1-yr est.

Five Highest and Lowest Marriage to Divorce Ratios, 2015

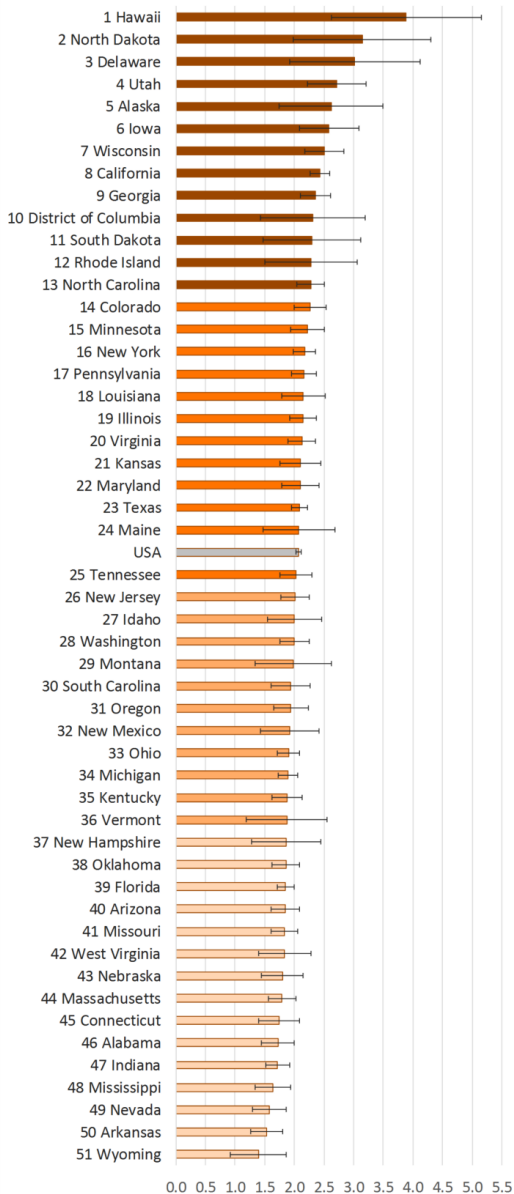
- The top three states in the marriage-to-divorce ratio are Hawaii (3.9), North Dakota (3.1), and Delaware (3.0). In Hawaii, there were nearly four marriages for each divorce and roughly three marriages for each divorce in the other two top states.
- The lowest three states are Wyoming (1.4), Arkansas (1.5), and Nevada (1.6). Wyoming had the lowest ratio with 1.4 marriages per one divorce in 2015.

Women's Highest and Lowest Marriage to Divorce Ratios

1. Hawaii	3.9
2. North Dakota	3.1
3. Delaware	3.0
4. Utah	2.7
5. Alaska	2.6
U.S.	2.1
47. Indiana	1.7
48. Mississippi	1.6
49. Nevada	1.6
50. Arkansas	1.5
51. Wyoming	1.4

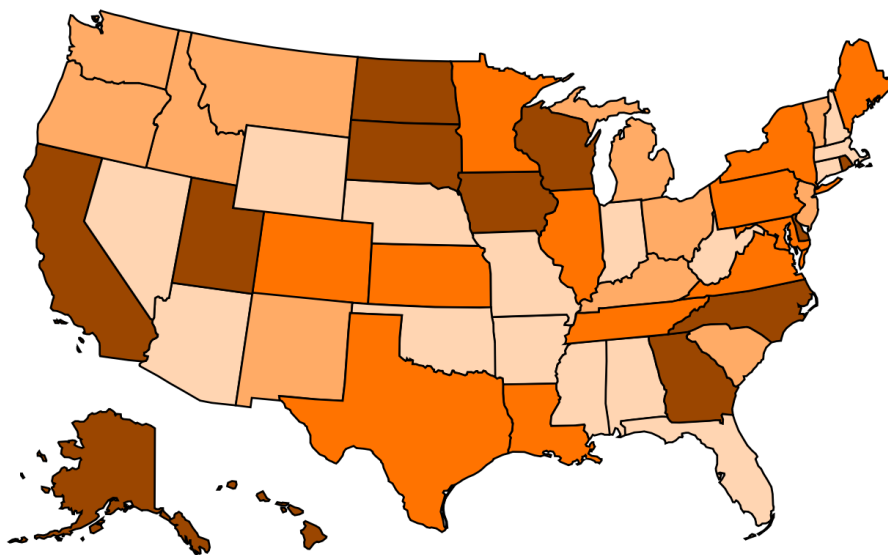
State in Rankings, 2015

Figure 2. State Variation in the Marriage to Divorce Ratio Among Women Aged 15+ by Quartile, 2015



Sources: U.S. Census Bureau, American Community Survey, 2015 1-yr est

Figure 3. Geographic Variation of Women's Marriage to Divorce Ratio Among States, 2015



Sources: U.S. Census Bureau, American Community Survey, 2015 1-yr est

References:

Clarke, S. C. (1995). Advance Report of Final Marriage Statistics, 1989 and 1990. *Monthly Vital Statistics Report*, Vol. 43, No. 12, Supp. National Center for Health Statistics. http://www.cdc.gov/nchs/data/mvsvr/supp/mv43_12s.pdf

National Center for Health Statistics (1974). Summary Report Final Marriage Statistics, 1970. *Monthly Vital Statistics Report*, Vol. 23, No. 2, Supp.1. U.S. Department of Health, Education, and Welfare. http://www.cdc.gov/nchs/data/mvsvr/supp/mv23_02s1acc.pdf

National Center for Health Statistics (1983). Advance Report of Final Marriage Statistics, 1980. *Monthly Vital Statistics Report*, Vol. 32, No. 5, Supp. U.S. Department of Health and Human Services. http://www.cdc.gov/nchs/data/mvsvr/supp/mv32_05s.pdf

National Center for Health Statistics (2001). Births, Marriages, Divorces, and Deaths: Provisional Data for January-December, 2000. *National Vital Statistics Reports*, Vol. 49, No. 6, Associated Table 3. Department of Health & Human Services, Centers for Disease Control and Prevention. http://www.cdc.gov/nchs/data/nvsr/nvsr49/49_06_12_03.pdf

Suggested Citation:

Wu, H. (2017). Marriage to Divorce Ratio in the U.S.: Geographic Variation, 2015 (FP-17-01). National Center for Family & Marriage Research. Retrieved from: <http://www.bgsu.edu/ncfmr/resources/data/family-profiles/wu-marriage-divorce-ratio-geo-2015-fp-17-01.html>



This project is supported with assistance from Bowling Green State University. From 2007 to 2013, support was also provided by the U.S. Department of Health and Human Services, Office of the Assistant Secretary for Planning and Evaluation. The opinions and conclusions expressed herein are solely those of the author(s) and should not be construed as representing the opinions or policy of any agency of the state or federal government.

National Center for Family & Marriage Research

Family Profiles: Original reports summarizing and analyzing nationally representative data with the goal to provide the latest analysis of U.S. families. These profiles examine topics related to the NCFMR's core research themes.

<http://www.bgsu.edu/ncfmr.html>



005 Williams Hall
Bowling Green State University
Bowling Green, OH 43403

☎ 419.372.3119

✉ ncfmr@bgsu.edu