

Executive Sponsors Meeting Data Warehouse Update

06/10/2019

Table of Contents

Vision and Mission Statement

New Committee Structure

Committee Members

A few accomplishments this year

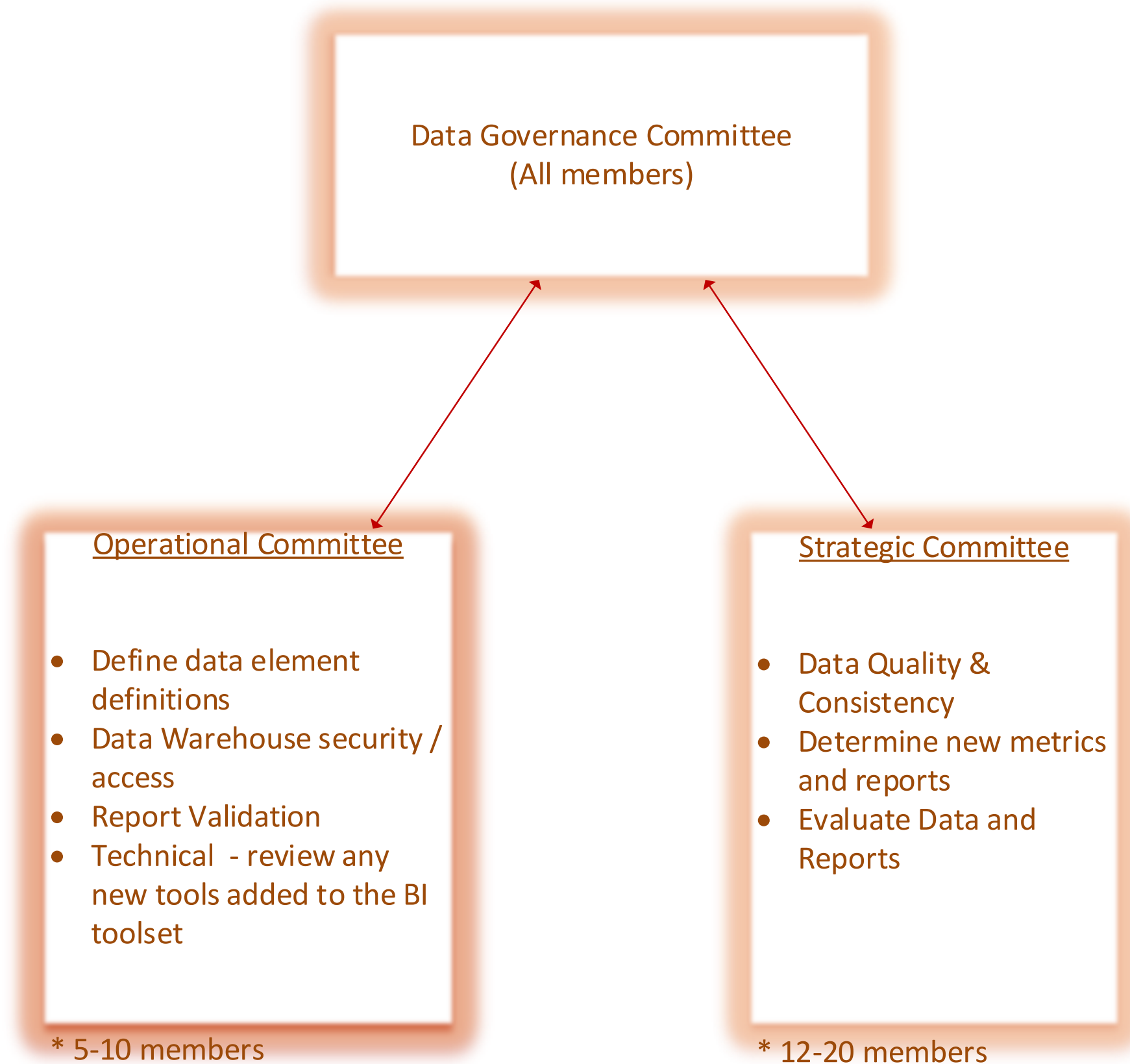
- **VISION**

- By providing accurate and timely information through a unified and consistent source, the Data Warehouse at BGSU will be the official repository for data that supports the mission and purpose of the University to transform students into educated, successful and responsible leaders in the community, nation and throughout the world.

- **MISSION**

- To provide an enterprise information infrastructure recognized for its value in delivering information that drives strategic, tactical and operational decisions at BGSU.

New Committee Structure



Data Governance Council



- Nicole Pedraza**
College of Health and Human Services
- Name**
College of Technology, Architecture and Applied Engineering
- Brian Campbell**
College of Education and Human Development
- PJ Mays**
Firelands College
- Chasity McCartney**
Bursar
- Alex Goberman**
Graduate College
- Bob Swanson**
Controller
- Beth Ann Rife**
Human Resources
- Erin Heilmeier**
Undergraduate Admissions
- Sharon Swartz**
Director of Budgeting
- Michelle Chronister**
University Libraries
- Arthur Yeh**
College of Business
- Registrar**
- Joshua Lawrie**
Residence Life
- Tom Kornacki**
Sponsored Programs and Research
- Jodi Webb**
Student Affairs
- Betsy Johnson**
Student Financial Aid
- Dale Klopfer**
College of Arts and Sciences