

## STATE COLLEGE BAND

A milestone in the history of the band was marked this year with the purchase of new uniforms. This was made possible by the generosity of students, faculty, and alumni. It is a credit to our school to possess so large a band fully uniformed.

In its many appearances the band attempts to create spirit and enthusiasm on various occasions: games, pep meetings, parades, and so on. In addition, the band devotes time to the preparation of a spring concert of standard music.

Membership includes men from all departments of the college who are interested in continuing this type of work.



## CHORUS

One of the agencies of culture in our college is the Mixed Chorus. This group is composed of students and teachers of the Public School Music Department and a few music-minded people of the city. Much of the success of the organization is due to the *esprit de corps* which is developed by our capable director, Professor Tunncliffe.

Each year more ambitious works are attempted, and each year the quality of performance improves. This year our study has been centered about two entertainments, the Christmas program and the Spring Concert. At the latter performance an added interest was the orchestral accompaniment for the "Golden Legend" by Sullivan.

George, Conley, Cole, Lusk, Miller, Iams, Mumaw, Hilgeneck,  
 Edwards, Kamerer, Campbell, Brown,  
 McEwen, Capen, James, Harmon, Honeck, Cocanour, Stover, Spreng,  
 Miller, Kunkle, Sheats, Brinkman, Krouse, Hilgeneck, Hall, Loomis, Baron  
 George, Sams, Rosendaul, H. Fashbaugh, Hirzel, Speakman, G. Fashbaugh, Reighard, Howe,  
 Lowe, Hutchins, Sadoris, Aschliman, Urschel, Craw, Dindot  
 Marble, Bordewich, Baker, Roux, Meckley, Voorheas, Sams, Tunncliffe, Schatzel,  
 King, Huntington, Powell, Peery, Gunn



It is possible for a student to take a major or minor in any of the following departments:

English	Mathematics
French	Physical Science
History	Social Science

For the present a student may take a minor in any of the following subjects:

Biological Science	Latin
Chemistry	Music
Commercial Education	Spanish
Home Economics	

### SEQUENCES OF COURSES FOR MAJOR AND MINOR SUBJECTS

#### BIOLOGICAL SCIENCE

##### *Minor*

First Year—Biological Science 61-62  
Second Year—Biological Science 73-74  
Third Year—Biological Science 83-84

#### CHEMISTRY

##### *Minor*

First Year—Chemistry 73-74  
Second Year—Chemistry 81-82  
Third Year—Chemistry 78, 80

#### COMMERCIAL EDUCATION

##### *Business Organization Minor*

First Year—Commercial Education 80  
Second Year—Social Science 78-79  
Third Year—Commercial Education 85-86  
Fourth Year—Commercial Education 81-82

#### ENGLISH

##### *Major or Minor*

First Year—English 61-62  
Second Year—English 63-64  
Third Year—Elective  
Fourth Year—Elective

#### FRENCH

##### *Major*

First Year—French 61-62; or 63-64  
Second Year—French 63-64; or 65-66  
Third Year—French 65-66; or 67-68  
Fourth Year—French 67-68 and 69-70; or 69-70 and Elective

##### *Minor*

First Year—French 61-62; or 63-64  
Second Year—French 63-64; or 65-66  
Third Year—French 65-66; or 67-68  
Fourth Year—French 67-68

Students who begin French in college follow the sequence given in the first column, and those with two years of high school preparation follow that given in the second column.

#### HISTORY

##### *Major or Minor*

First Year—History 61-62; or 65-66  
Second Year—History 73-74  
Third Year—Elective  
Fourth Year—Elective  
Social Science 77 or 80, or both, may be offered as electives on either a major or minor.

#### HOME ECONOMICS

##### *Minor*

First Year—Home Economics 75  
Second Year—Home Economics 73-74  
Third Year—Home Economics 61-62  
Fourth Year—Home Economics 65-66  
Students who minor in Home Economics must elect Chemistry 73-74 before taking Home Economics 61-62.

#### LATIN

##### *Minor*

First Year—Latin 61-62 and 65-66  
Second Year—Latin 63-64  
Third or Fourth Year—Latin 73-74

#### MATHEMATICS

##### *Major*

First Year—Mathematics 61-62  
Second Year—Mathematics 79-80  
Third Year—Elective  
Fourth Year—Elective

##### *Minor*

First Year—Mathematics 61-62  
Second Year—Mathematics 79-80

#### MUSIC

##### *Minor*

First Year—Music 61-62 and 81-82  
Second Year—Music 63-64 and 83-84  
Third Year—Elective  
Fourth Year—Elective

Electives may be chosen from Music 65-66, 67-68, 85-86, 87, 88, 91, 92; or may be taken in Applied Music. Students who wish to offer credits in Applied Music must obtain permission from the head of the department and the amount of credit allowed will be determined by the ability and advancement of the student.

#### PHYSICAL SCIENCE

##### *Major*

First Year—Chemistry 73-74  
Second Year—Physics 75-76  
Third Year—Chemistry 81-82  
Fourth Year—Elective

##### *Minor*

First Year—Chemistry 73-74  
Second Year—Physics 75-76  
Third or Fourth Year—Chemistry 81-82, or Physics 78-79

## STATE COLLEGE ORCHESTRA

The College Orchestra is an organization which appeals to many students who have had previous orchestral training. The talent included in the student body usually affords a quite well balanced group of players.

The orchestra works regularly throughout the year in preparation for public performance. Its ideal is a strictly symphonic instrumentation, doing a symphonic type of music. Its members include not only special students of music, but all interested members of the student body, and occasional town musicians who are interested in the work.

This year's spring concert includes works by Wagner, Mendelssohn, Liszt, Grieg, Rimsky-Korsakoff, and others.



## PHI SIGMA MU

Phi Sigma Mu is a National Honorary Music Fraternity for students and teachers of Public School Music. Beta Chapter of the fraternity was organized at Bowling Green State College in 1926. The purposes of this organization are to create and foster fellowship among students and teachers of Public School Music, to obtain a higher degree of craftsmanship as an individual and as a group, and to foster loyalty to the Alma Mater. Members are admitted into Phi Sigma Mu on the basis of high scholastic and professional standards.

This year the local chapter conducted an intensive study of the Wagnerian opera, "Die Walkure", which was enjoyed not only by music students, but also by the College faculty and townspeople.

Rosendaul, Loomis, Campbell, Speakman, Sams,  
McEwen, Miller, Tunncliffe

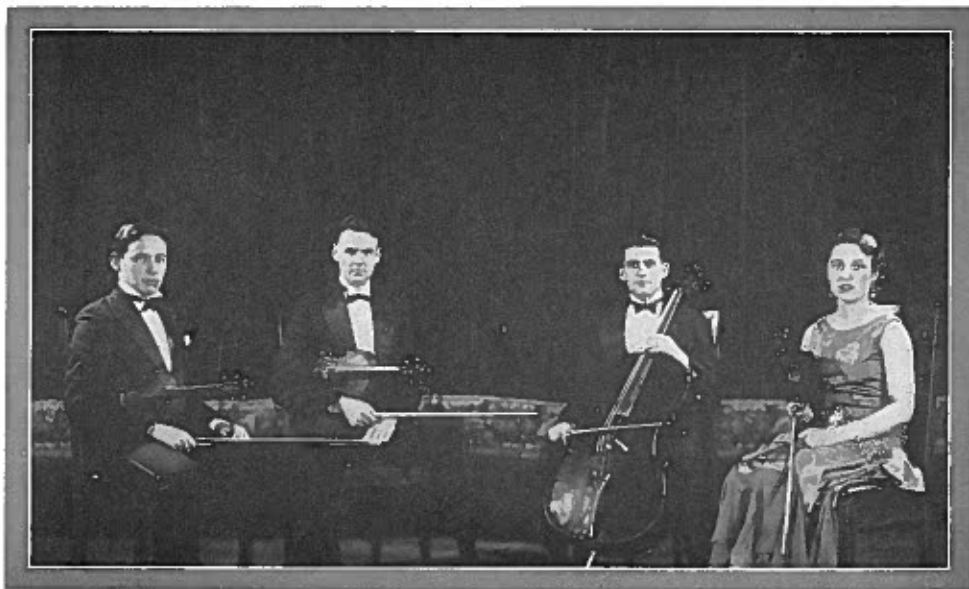


## COLLEGE STRING QUARTET

A string quartet is composed of four instruments: first and second violin, viola, and cello. The "quartet" or music written for such a combination of instruments is considered the most perfect form of composition. A complete "quartet" has four movements: allegro, andante, scherzo, and finale.

The purpose of the Bowling Green College Quartet is to acquaint the students with the highest type of music. The works of the classical composer, Haydn, Mozart and Beethoven, and of the modern composers, Brahms and Dvorak, have been studied. This year, concentrated attention has been given to Dvorak's quartet, Op. in F. Major, which is based on Indian melodies.

Baron, McEwen, Capen, Urschel



## THE TREBLE CLEF CLUB

The Treble Clef Club is a musical organization, consisting of college women, who have satisfactorily passed the initial voice test, and who are diligent and faithful participants in its activities.

During the present year, the club has centered its efforts around the traditional events of past years. At Christmas time the preparation for the singing of Yuletide carols occupied several of its weekly practices. The month of January brought with it feverish plans and preparations for its formal Snow party, given on February 20 in the Women's Gym. The last event was the annual Spring Concert which is always an interesting part of Commencement festivities.

Stanton, Cole, Davis, Jones, Fenn, Sharp, Tansel, Schilling, Gill, Weikert, Louys, Green  
 Bushong, Larcomb, Bueche, Van Buren, Hanson, Bates, Clague, Weis,  
 Hayzlett, Epker, Hicks, Nietz, Wallace, Johnson  
 Wallrath, Price, Teet, McClenathan, Bueche, Bernath, Clingaman,  
 Brentlinger, Knott, Reuman, Haines, Thomas, Hall  
 Speakman, Hopkins, Long, Luxinger, Heiby, Burkland, Fels,  
 Hepner, Keller, Walker, Huffman, Kumnick

