



### CONCERT BAND

Seated—James, Kaiser, Powell, Connelly, Mason, Smith, Hutchinson, Jordan, Snyder, Brown, Rohrs, Jolly, Prof. Mathias, T. Kunkle, F. Kunkle, George, Zaugg, Ringenberg, Kindinger, Jackson, Stever, M. Pisel, Gillette, J. George, Newmair, W. Pisel.

Standing—Gamble, Ingmire, Belding, Stevens, Reeves, McLaughlin, Prof. Church.



### MARCHING BAND

First Row—Armstrong, Brown, Snyder, Reeves, Stevens, Belding, McLaughlin, Rohrs, T. Kunkle, Prof. Church.

Second Row—M. Pisel, George, Ringenberg, Stever, Jordan, F. Kunkle, Jackson, James, Powell.

Third Row—Gamble, Zaugg, Prof. Mathias, W. Pisel, Newmair, T. George, Gillette, Jolly, Mason, Ingmire.

## STATE COLLEGE BANDS

### OFFICERS

CHARLES F. CHURCH, JR.  
 ROBERT JAMES  
 ALFRED M. GEORGE  
 WENDELL STEVENS  
 ALFRED SNYDER  
 MAYNARD GAMBLE  
 JAMES ARMSTRONG

Director  
 President  
 Student Director  
 Secretary  
 Librarian  
 Stage Manager  
 Drum Major

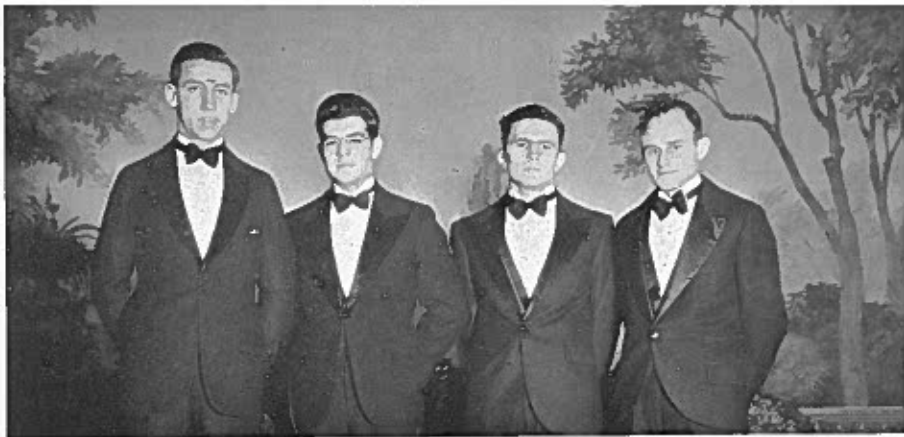
The college band remains one of the most familiar musical organizations on the campus. The material available from the student body continues to improve in both quality and quantity each year. This year there has been a division of the band into two units—the Marching Band, and the Concert Band. It is expected that this division will be made more definite.

The Marching Band is frequently heard, making about thirty appearances each year at student and town affairs. Major athletic events, pep meetings,

etc., are among the occasions where the band is sure to be found.

The Concert Band is, as its name implies, an organization which prepares standard concert music for public performance. To this group, qualified women students as well as men are admitted.

Observation of the college band for the past several years shows a consistent growth in every way. Each year the players available provide a more balanced and a more varied instrumentation.



#### MALE QUARTET

Erich Koop, bass	Long Island, New York
Howard Haise, baritone	Sylvania, Ohio
Alden Allensworth, first tenor	Marion, Ohio
Robert Edwards, second tenor	Lima, Ohio

### VOCAL QUARTETTE

Since its creation in the early history of the college, the Male Quartet has played an important part in the social activities of the school and in entertainment circles outside the college. It has been heard at chapel exercises and dances and has sung at many social functions and church services in other towns and cities of northwestern Ohio. Radio broadcasting has also been included among its activities.

It may be interesting to know that those men singing in the quartet are selected from the members of the Men's Glee Club. They practice and sing with the Glee Club besides having their own practice periods and putting on their own performances.

Under the excellent supervision of Professor Leon E. Fauley, these men have established an enviable name for themselves. Their voices are exceptionally well balanced and their harmony is skillfully developed and pleasing to the ear. During the school term they made over twenty appearances and they have been highly praised by many of their audiences. They sang at several Parent-Teachers meetings and their harmonious voices were heard at many club luncheons

and banquets. The most memorable of these were: the Heinz "57" Club Christmas Banquet, and the Kiwanis Club luncheons. Among the many songs which these young men sang were such beautiful pieces as the following:

Lullaby	Brahms
Shadow March	Protheroe
Fireflies	Russian Folk Song
Black Belt Lullaby	Plantation Song
Po' L'il Lamb	Parks
My Ain Folk	Lemon

Not only does an organization such as this bring pleasure to others but it also creates a lasting friendship and feeling of good-fellowship among its members.

In traveling about, the quartet has carried the name of our college far afield and it deserves to be remembered for this invaluable work.

Credit goes to Professor Fauley for making this quartet a success. Through his tireless efforts the four voices were blended into one harmonious group and by the end of the term they could render a selection with only a small amount of practice.



Howard Hoise, Erich S. Koop, Orvin Wiseley, Carleton Newmier, Rillmond Weible, Robert McLoughlin, Troy Fisher, Robert Kruse, Owen Collin, David W. Callin, Max Dunipace, Franklin Belding, Robert H. Bender, George H. Rohrs, Don Badertscher, Alden Allensworth, Harley Barnett, Robert Edwcrds, Wayne Phillips, Lawrence Ringenberg.

## MEN'S GLEE CLUB

### OFFICERS

HOWARD HAISE	President
ALDEN ALLENSWORTH	Manager
TROY FISHER	Secretary-Treasurer
LAWRENCE RINGENBERG	Librarian
GEORGE ROHRS	Accompanist

For those men of the college who are not members of the Music Department, there has been organized the Men's Glee Club. In this manner the organization offers to such individuals an access to furtherance of musical appreciation and pursuit that would otherwise be denied them.

Although their activities are a formidable part of the collegiate entertainment, they are not solely confined to the campus. Besides presenting an annual concert in the college auditorium the group has sent quartets to neighboring churches and clubs to participate in their entertainment. It has also taken a part in radio broadcasting and other special programs.

Our Glee Club this year was organized in the latter part of September with an enrollment of about fifteen members and by the end of the year its personnel had increased to thirty-two.

Our Formal Dance, which was held February 23, was a great success with an attendance of approximately one hundred people. Refreshments were served between dances and a very enjoyable time was had by all.

We owe a great deal to Professor Leon E. Fauley for the tireless devotion and effort which he put forth to make our club a success. Under his direction we presented our concert on April 24, 1934 with the following program:

Echo Song	di Lasso 1532-94
Passing By	Purcell 1658-95
Danse Macabre	St. Saens 1835-1921
	Glee Club
Stars of the Velvety Sky— (Trumpet Solo)	Herbert Clarke
	Lawrence Ringenberg
Group of Russian Folk Songs	
Fire-flies	
At Father's Door	
	Quartet
Stenka Razin	Russian Ballad
Hospodi Pomiloi	Lvovsky
	Glee Club
Readings	Selected
	Ross Greek
Group of Negro Songs	
Why Adam Sinned	Huntley
Listen to The Lambs	Dett
	Glee Club
Black Belt Lullaby	Wallace
	Quartet
The Sleigh	Koontz
Musical Trust	Clokey
Autumn Sea	Gericke
	Glee Club
Now The Day Is Over	
	Glee Club



## THE CHORUS

The Chorus is a musical organization whose membership is limited to students and teachers of the Music Department. Its purpose and functions is to encourage better choral singing as well as to present to the student body a larger and more select repertoire of the better musical compositions. It also endeavors to assist in developing a more appreciative conception of fine music.

The activities of the chorus this year included the following presentations: The annual Christmas concert, consisting of the Carols, "Watchman Tell us of the Night" by Parry, "Carol of the Russian Children" by Gaul, "The First Noel"—Traditional, "In a Manger Lowly" by Daniels, "Born To-day" by Sweelinck, "Cantique de Noel" by Adam, from Handel's "Messiah—And the Glory of the Lord", and the "Hallelujah Chorus." Soloist, Marjorie Sams.

The program of Lenten Music included the cantatas "From Olivet to Calvary," by Maunder; "Hear My Prayer" by Mendelssohn, and also "The Palms" by Faure; "The Cross" by Ware; and "Prepare Ye The Way of the Lord" by Garret. Soloists Leon Fauley, Clement Premo, Marjorie Sams and Fanchon DeVerna. Both of these programs were under the direction of Professor R. M. Tunnicliffe.

The comic opera "The Mikado" by

Gilber and Sullivan, was produced as the spring concert. The cast included: Earl Cryer, Nanki-Poo; Alferd George, The Mikado; Mrs. Moores, Katisha; Clement Premo, Ko-Ko; Ivan Lake, Pooh-Bah, Donald Armstrong, Pish-Tush; Marjorie Sams, Yum-Yum; Fanchon Deverna, Pitti-Sing; Arlene Gill, Peep-Bo; Chorus of school girls; Chorus of Nobles, Guards and Coolies.

PLOT—The Mikado, a highly moral ruler of Japan, has issued an edict condemning to death every man found guilty of flirtation. To evade this stern sentence the citizens of Titipu decide to appoint one thus condemned (Ko-Ko) to the office of High Lord Executioner, with the result that he could not behead the next one until he had first cut his own head off. It being necessary eventually to execute ~~one~~ one, Ko-Ko, who is engaged to Yum Yum, and is also first on the list of the condemned, finds a substitute in Nanki-Poo (The Mikado's son in disguise) who has gone into temporary obscurity to avoid marrying the elderly Katisha. Nanki-Poo agrees to suffer execution a month hence provided he can be married to Yum-Yum for that period. Legal complications follow, and in the end Nanki-Poo is forgiven and weds Yum-Yum and Ko-Ko saves himself by marrying Katisha.

"The Mikado" was under the direction of Professor M. C. McEwen.

### FIRST ORCHESTRA

Seated—Sams, T. George, Greer, L. George, Armstrong, Phillips, Miller, A. George, Craw, James, Martin, Jordan, Kindinger, Robertson, Ringenberg, Prof. McEwen, Zaugg, Cox, F. Kunkle, M. Zaugg, Strohl.

Standing—Avery, Short, Gamble, Gillette, Newmier, W. Pisel, McLaughlin, Prof. Church.



### SECOND ORCHESTRA

Seated—Newman, Dalton, Bigelow, Jordan, Rupp, Curtis, Sams, Armstrong, Kaiser, James, Hutchins, O. George, Mignin, T. George, Craven, Blum, Connelly, Senn, Thompson.

Standing—Avery, Short, Prof. Church.



## STATE COLLEGE ORCHESTRA

Although handicapped by the fact that players of stringed instruments are few in the student body this year, the orchestra has rehearsed regularly. A Chapel program has been given and the Orchestra has assisted the College Mixed Chorus in the rendition of a sacred concert, and in the production of Gilbert and Sullivan's operetta, "The Mikado."

Music used by the orchestra is selected from the literature of the symphony orchestra. Several complete symphonies have been presented by the orchestra in past years, in addition to many smaller works.

### OFFICERS

Charles F. Church, Jr.	Director
Virginia Bigelow	President
Dorothy Martin	Secretary
Maynard Gamble	Librarian

## SECOND ORCHESTRA

This year, for the first time, a second orchestra was organized in order to give all students in the college an opportunity for this type of experience, regardless of the short time they may have played an instrument. Students who have attended the regular weekly rehearsals have enjoyed playing just for the sake of playing.

It is hoped that next year this organization may be started at the beginning of the year, with opportunity for public appearance.

### OFFICERS

Charles F. Church, Jr.	Director
LaVon Connelly	Student Director
Virginia Bigelow	President
Mildred Craven	Secretary
Alfred George	Librarian



L. Newman, M. Sams, L. Connelly, H. Fashbaugh, V. Bigelow, Prof. McEwen, L. Whittle  
A. Hutchins, Prof. Hall, F. Deverna, E. Mignin, Prof. Tunnicliffe.

## PHI SIGMA MU

### OFFICERS

ARLINE HUTCHINS	President
MARJORIE SAMS	Vice-President
LUCY WHITTLESY	Recording Secretary
FANCHEON DEVERNA	Corresponding Secretary
LAVON CONNELLY	Treasurer
LUCY NEWMAN	Historian
HAZEL FASHBAUGH	Alumni Secretary

Phi Sigma Mu is a National Honorary Music Fraternity composed of students and faculty of Public School Music. The purpose of this fraternity is to create and foster fellowship among students and teachers, to attain a higher degree of musical ability, to aid the members professionally and to foster loyalty to the Alma Mater.

Beta Chapter was founded at Bowling Green State College in 1926, and it has been one of the most active fraternities on the campus.

In order to gain admission to this fraternity, high scholastic standards must be attained. Meetings are held once in two weeks on Wednesday evenings; during this time new problems are discussed and programs are arranged.

According to its usual custom, this organization sponsored a formal dinner for the entire music department for the purpose of welcoming the new, incoming music students; this year the dinner was held at the Woman's Club. Mr. Carmichael who was the speaker of the evening gave a very interesting talk on Shakespeare and music; the

group was especially interested in learning how music functions in the Shakesperian Plays. During the evening, one of our active members, Fancheon Deverna, favored the group with vocal numbers. Donald Armstrong, an Alumni member also helped to make the evening a success by playing several violin solos; Marjorie Sams accompanied these numbers. For the remainder of the evening, the entire group became better acquainted with each other by singing songs and playing musical games.

For the annual project, the group has studied various outstanding composers who lived and composed since the classical period. Many facts of interest were learned about their lives and the group was especially interested in noticing how their personal natures affected their compositions.

The fraternity is glad to announce that two students, Virginia Bigelow and Ellen Mignin have met the requirements of the organization and have been taken in as new members this year.



## THE TREBLE CLEF CLUB

### OFFICERS

MELTHA CARTER . . . . .	President
DOROTHY PACE . . . . .	Vice-President
MARY L. TATE . . . . .	Secretary-Treasurer
ROSALIE CHRISTY . . . . .	Chairman of Social Committee

The Treble Clef Club, under the direction of Miss Marian D. Hall, is an organization for girls who enjoy singing and are outside the music department. During the first semester, the club furnished music for a chapel program. Each noon of the week preceding Christmas, members of the club together with music students formed a nucleus for carol-singing in the Administration Building. On the evening of December twentieth, after singing carols in the streets with the boys glee club, the girls and men were entertained at the home of Prof. Fauley. The following evening the club assisted in the presentation of the annual Christmas Concert given by the music department. On February twenty-third the combined clubs enjoyed themselves on their "melody cruise", the annual formal dance. The theme of a sailing party was carried out with deck games, blue and white decorations, and nautical programs. An afternoon musicale, the first to be put on by the Treble Clef Club, was presented on March first to a small audience of invited guests. The year's

activities were concluded with a spring concert.

**FIRST SOPRANO**—Junerose Bader, Ruth Balsizer, Frances Baxter, Virginia Cromley, Dora Dillman, Gertrude Erckman, Frances Gerding, Elowyse Kay, Bernice Kisling, Kay Lehman, Lenore McKinnis, Betty Miller, Thelma Naugle, Jean Nevins, Mildred Regula, Marjorie Rohrer, Vera Schaffner, Janice Schuck, Audrey Anna Smith, Margaret Stocker, Mary Tate, Alene Vickers, Mary Jo Zeisler.

**SECOND SOPRANO**—Frieda Baron, Viola Bormuth, Ramona Bradshaw, Dorothy Burras, Meltha Carter, Marjorie Caughey, Rosalie Christy, Naomi Curtis, Alyce Davidson, Kathryn Fox, Elizabeth Graham, Harriet Hess, Alice Hoag, Margaret Jackman, Rosemary Ketzenbarger, Evelyn Kratzer, Alice Jane Miller, Dorothy Pace, Orlene Redditt, Edna Rheiber, Mabel Roush, Bernice Saul, Marjorie Schlumbahm, Marjorie Seitz, Geneva Shealy, Evelyn Wentz, Lucile Wickham.

**ALTO**—Esther Albery, Imo Cates, Achas Ganser, Ray Gurien, Mary Ellen Keil, Winifred Keller, Audrey Ketchum, Irma Kumnick, Margaret Lea, Dorothy McIntire, Marybelle Pollock, Elzabetta Ruth, Thelma Rychner, Rose Solomon, Martha Ullery, Velela Whaley, Vesta Winkle, Anne Woestenberg, Virginia Young.

**ACCOMPANIST**—Mary Copus.