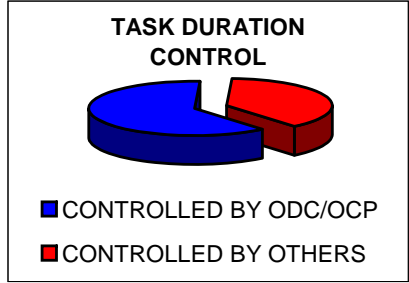
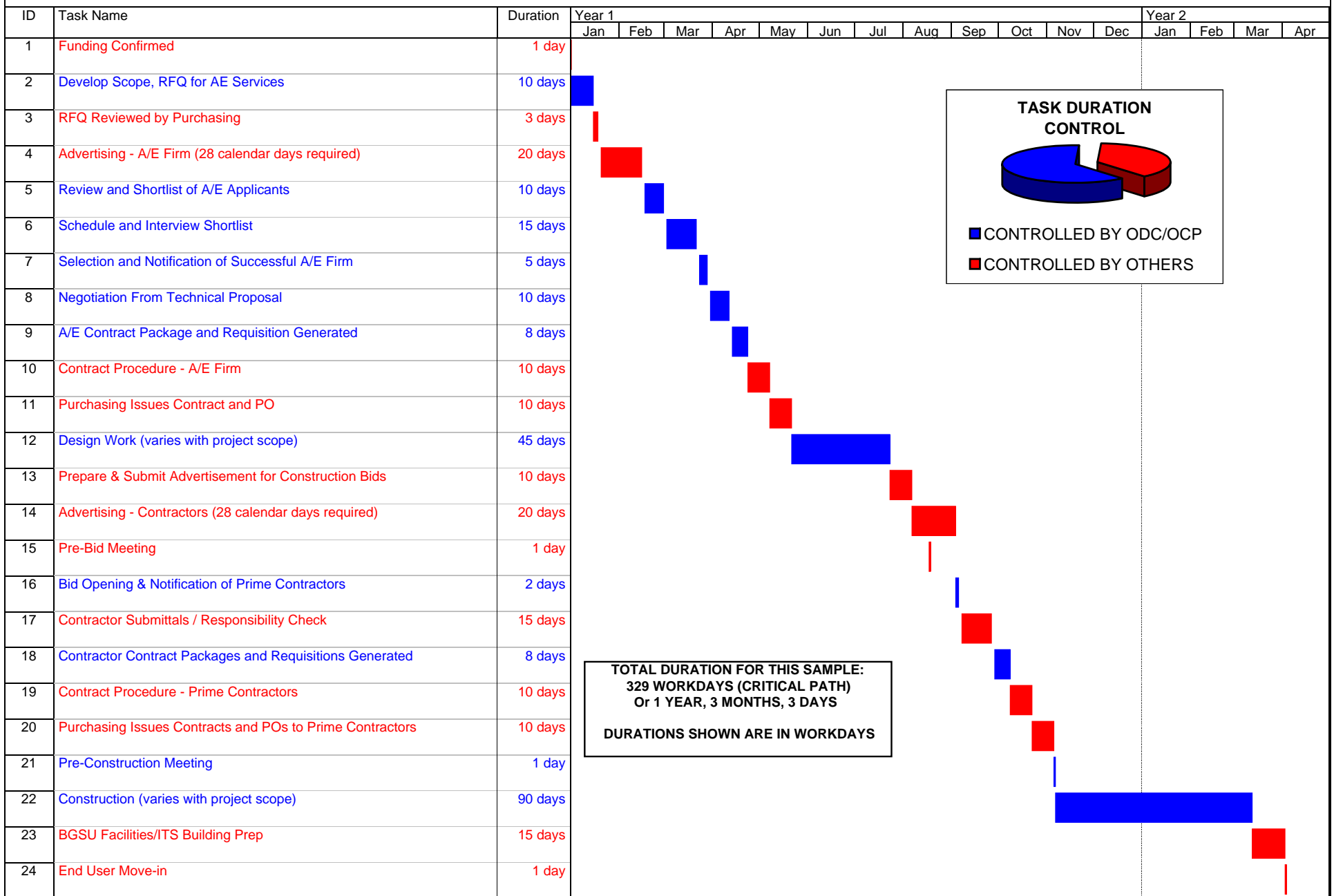


## SAMPLE Project Implementation Timetable - Locally Funded Projects up to \$500,000 (with A/E Fees over \$25,000)



**TOTAL DURATION FOR THIS SAMPLE:  
329 WORKDAYS (CRITICAL PATH)  
Or 1 YEAR, 3 MONTHS, 3 DAYS**

**DURATIONS SHOWN ARE IN WORKDAYS**