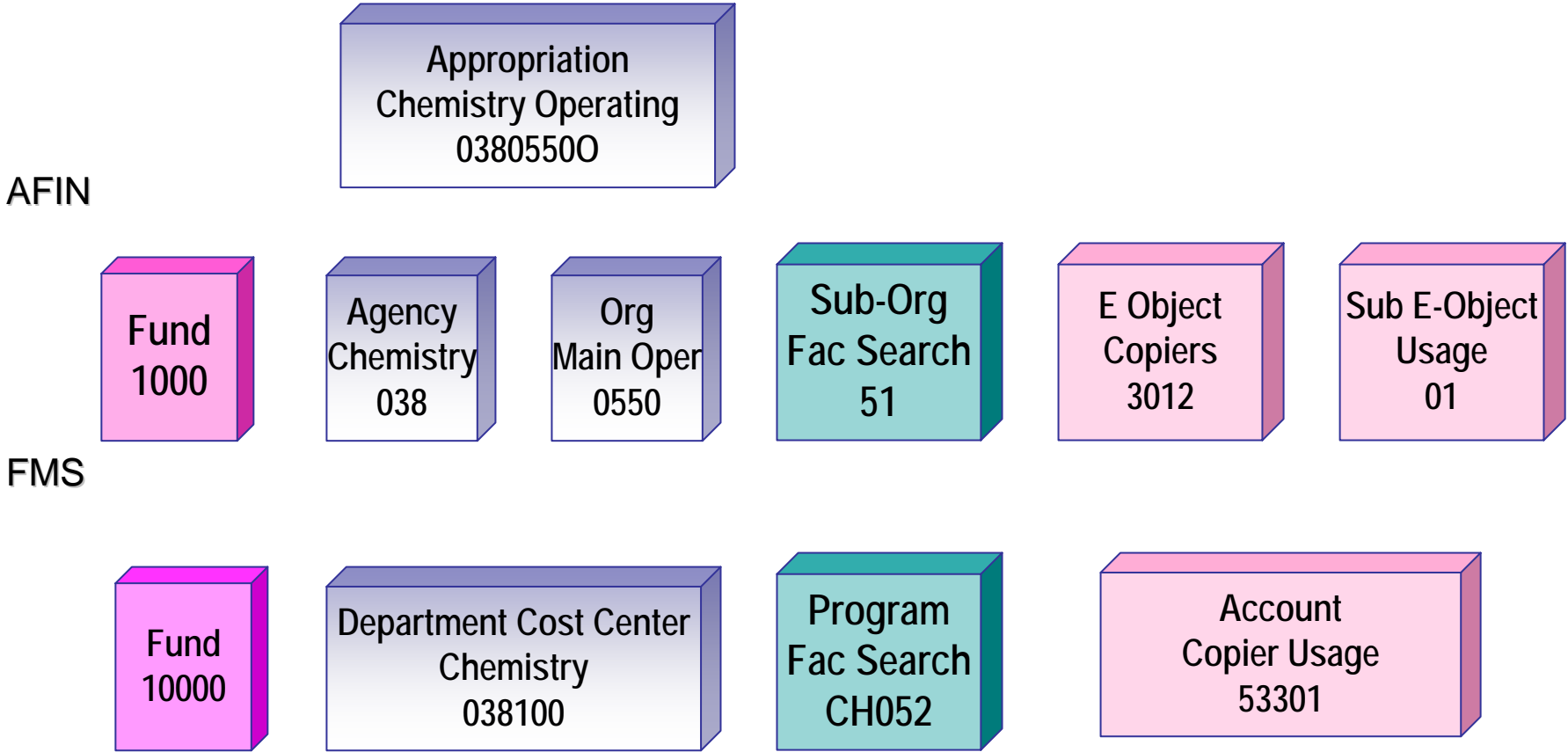


<b>Spending Authority, Expense, &amp; Revenue Functions</b>	<b>AFIN Legacy Fields</b>	<b>FMS Chartfields</b>
Collects all transactions relating to one federal tax ID number	N/A	Business Unit = BGSUN
Identifies type of transaction	Acct Type	Acct Type
Further classifies <b>expense</b> transactions	Exp Object	Account
	Exp Sub-Object	
Further classifies <b>revenue</b> transactions	Revenue Source	Account
	Sub-Rev Source	Class (Revenue)
Identifies type of funding source	Fund	Fund

<b>Spending Authority, Expense, &amp; Revenue Functions</b>	<b>AFIN Legacy Fields</b>		<b>FMS Chartfields</b>	
Identifies the spending authority •Fiscal Year	Agency	Org	Dept Cost Center	
	Appropriation			
Identifies the spending authority •Multi-year period ( <b>Grants</b> )	Agency	Org	Project/Grant 8-digit <b>Grants</b> Code	
	Appropriation			
Identifies the spending authority •Multi-year period ( <b>Projects</b> )	Agency	Org	Project/Grant 8-digit <b>Project</b> Code	
	Appropriation			
Further defines departmental activities (requires no budget)	Sub-Org		Program	

# Assigning Copier Expense for Chemistry Faculty Search



# Assigning Copier Expense for Upward Bound Grant

Appropriation  
Upward Bound  
42050130

**AFIN**

Fund  
4402

Agency  
Multicultural Prgms  
420

Org  
5013

E Object  
Copiers  
3012

Sub-E Object  
Usage  
01

**FMS**

Fund  
40000

Project/Grant  
14200009

PC Bus  
Activity

Account  
Copier Usage  
53301

# For Inquiring Minds

- BG@100 - Phase I Scope Document
- BG@100 - Chart of Accounts Design
  - <http://www.bgsu.edu/BGat100>
    - Click on [BG@100 Project Related Documents](#)
- BG@100 Email Address
  - [BGat100@bgsu.edu](mailto:BGat100@bgsu.edu)