

BGSU Wireless Network



Windows XP Service Pack 2 Client Setup Guide

This step-by-step document assumes you have previously installed an 802.11b/g compliant wireless adapter in a mobile device running Windows XP with service pack 2. You will also need a valid BGnet account.

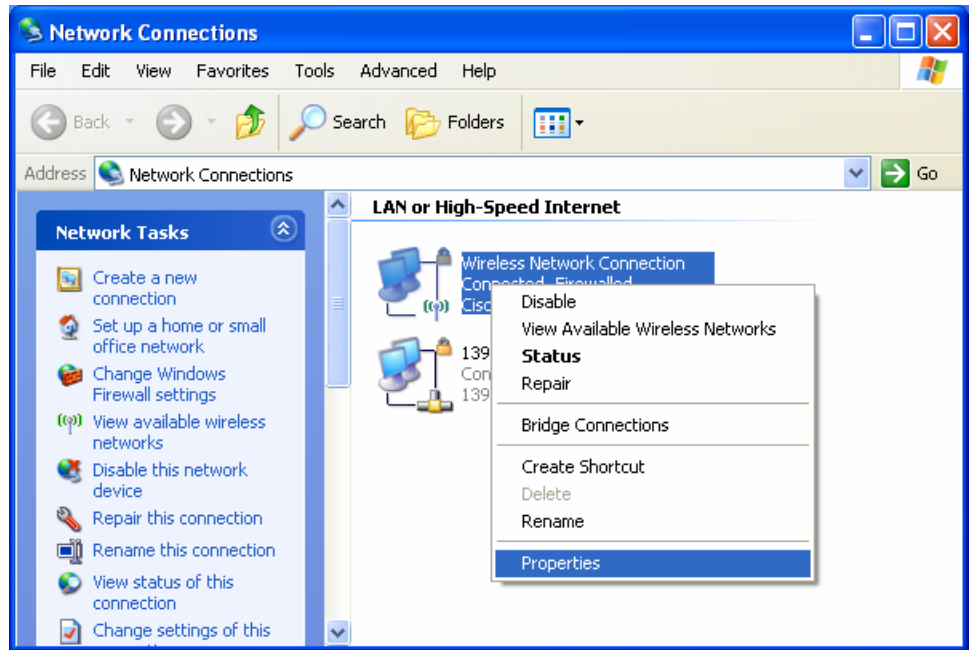
For more information regarding wireless network access, recommendations and locations please visit www.bgsu.edu/its/network/.

1 Click the **Start** button and select...

- ▶ All Programs
- ▶ Accessories
- ▶ Communications
- ▶ Network Connections

2

Right Click on your **Wireless Network Connection** and select Properties.

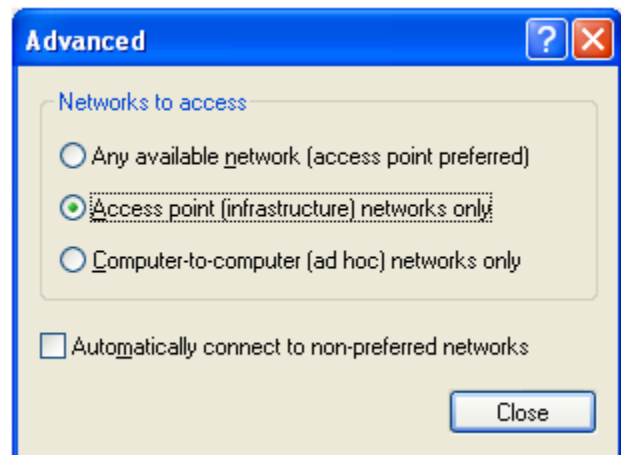
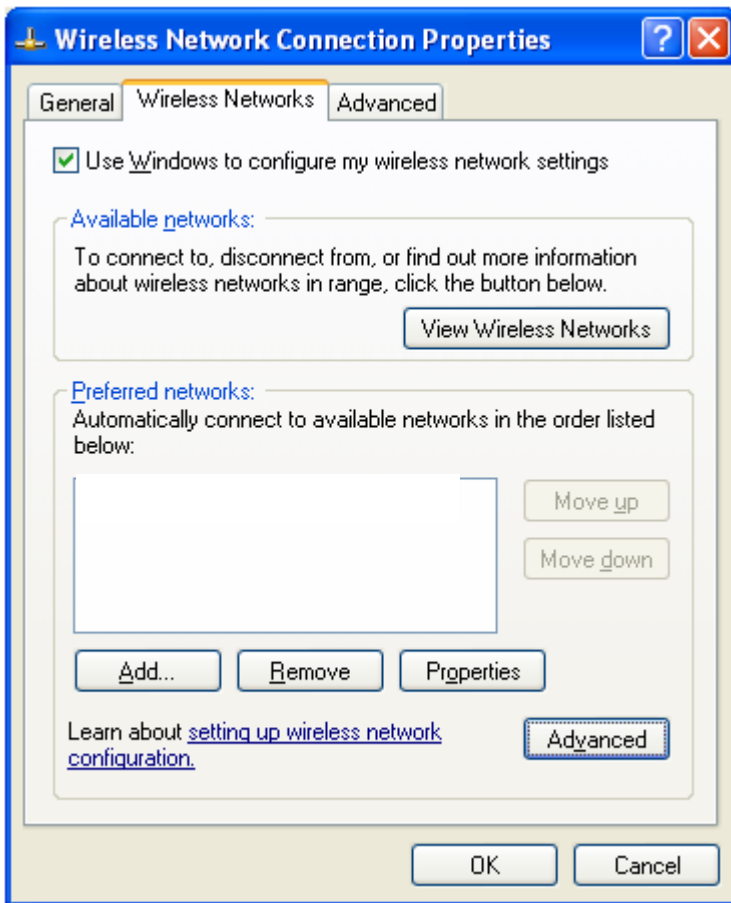


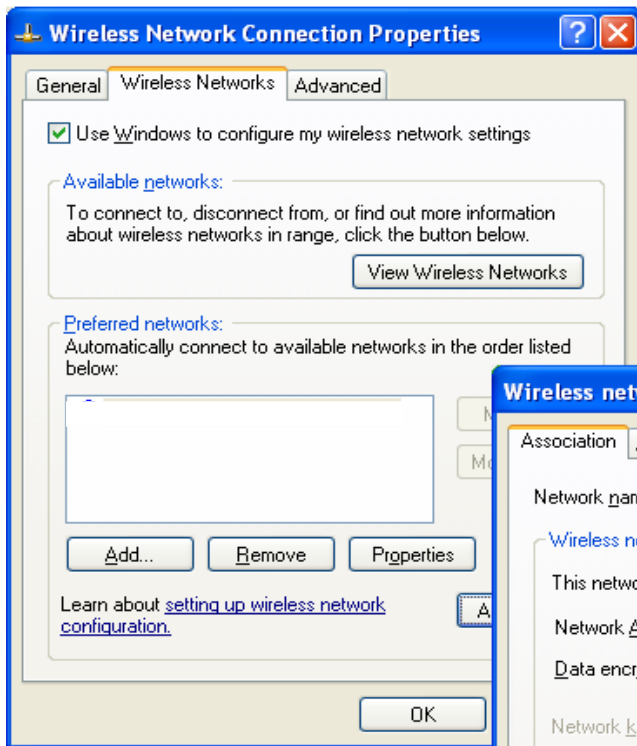
3

Choose the Wireless Networks Tab.

Ensure that the **Use Windows to configure my wireless network settings** box is checked ✓.

Click the **Advanced** button. Select the **Access point (infrastructure) networks only** option, then click Close





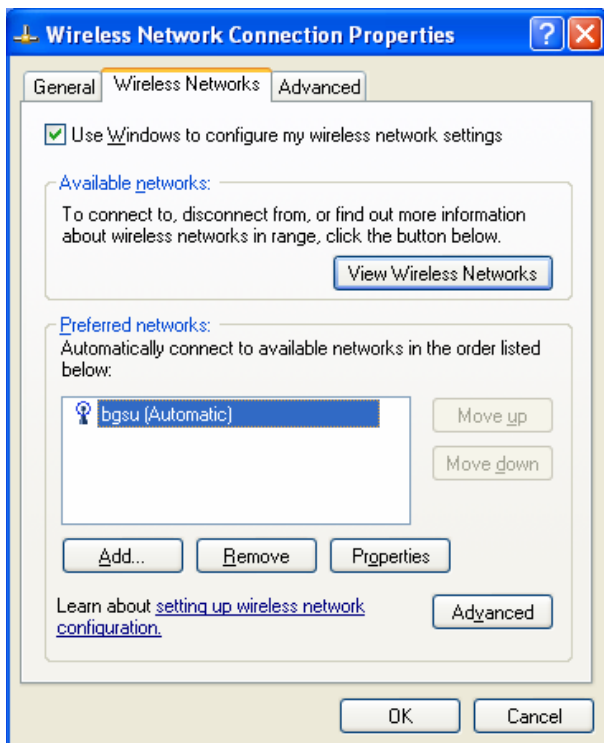
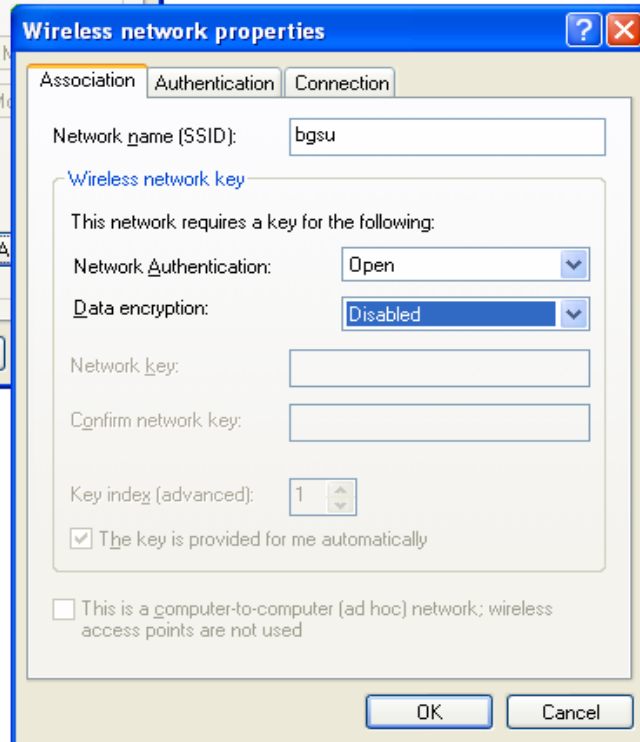
Click the **Add** button

In the Network Name (SSID) field, enter **bgsu** (case sensitive).

Expand the Data encryption drop-down and select **Disabled**.

Click **OK**.

4



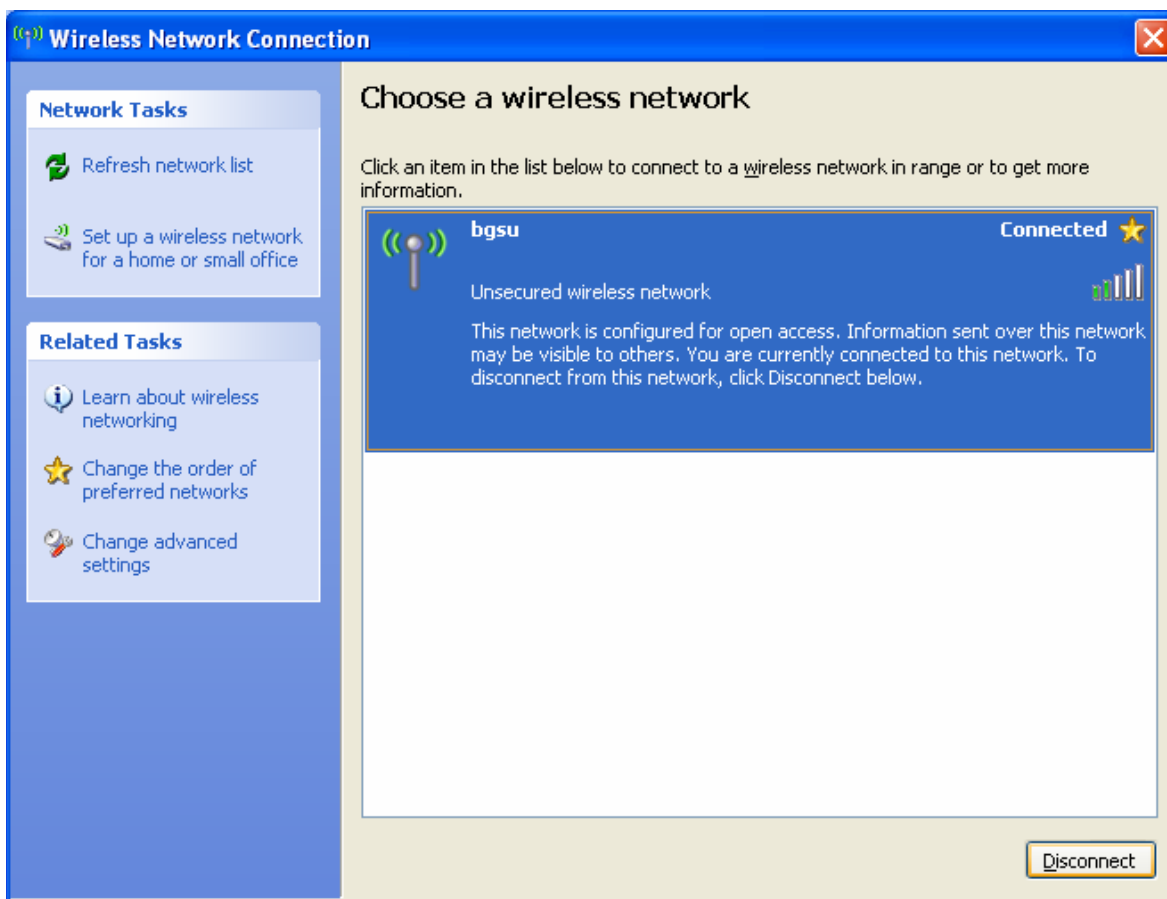
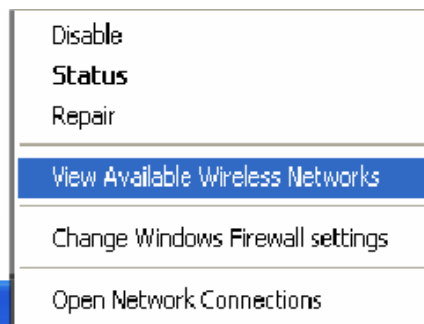
5

You should now see **bgsu (Automatic)** in the preferred networks list.

Click **OK** to apply the settings and close the Network Connections window.

6

To verify connectivity, *right* click on your wireless connection in the Systray (bottom right) and select **View Available Wireless Networks**.



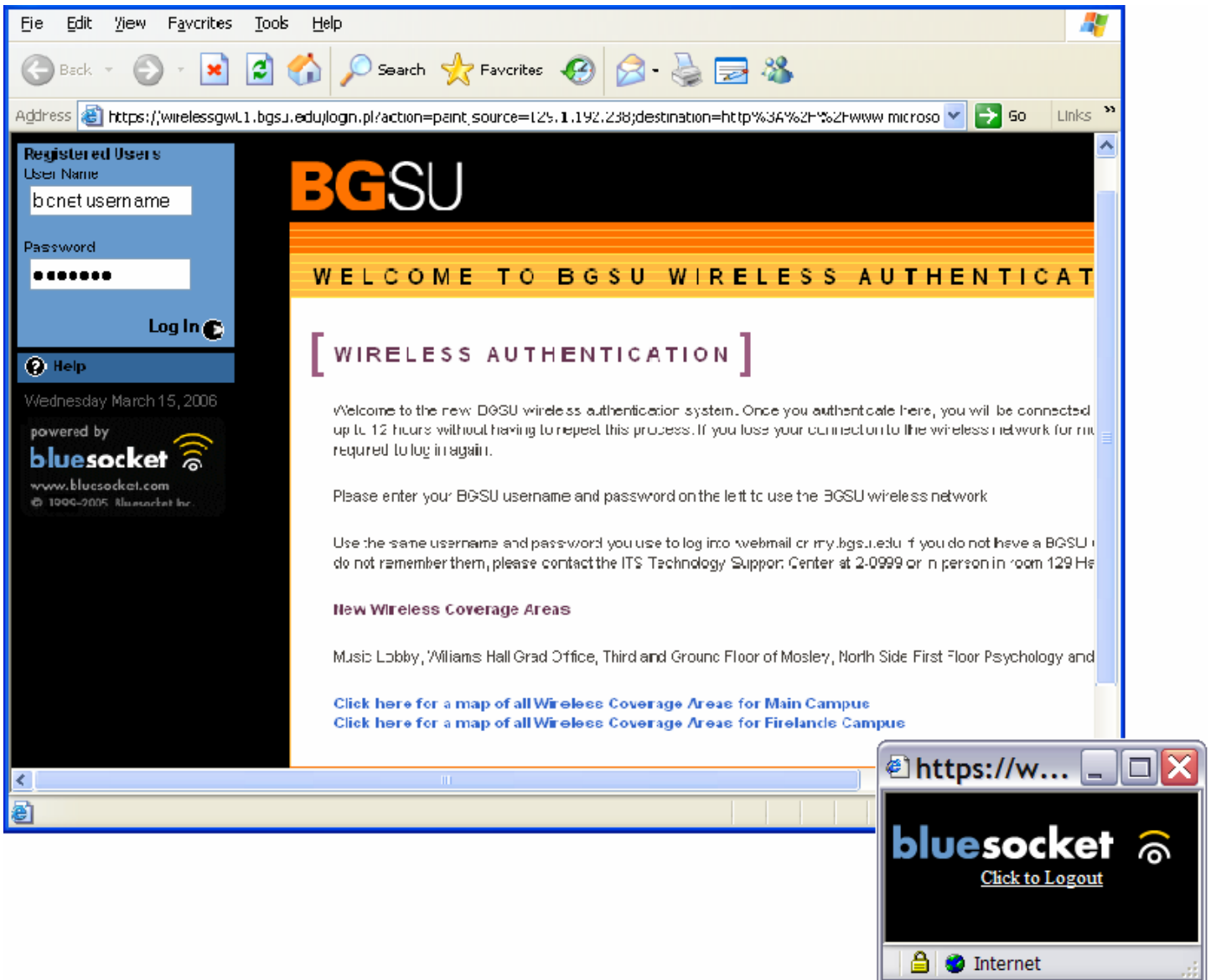
7

Open a web browser.

You should automatically be re-directed to the BGSU Wireless Authentication page.

Login using your bgnet (email) credentials. Upon successful login, you will be directed to your home page. A pop-up window should appear for quick and easy logout when you are finished.

Also on this page are links to the wireless locations that you can access for both the Bowling Green and Firelands Campus.



Enjoy!