

BGSU Wireless Network Windows XP Wireless Client VPN Setup and Authentication

Quick Reference

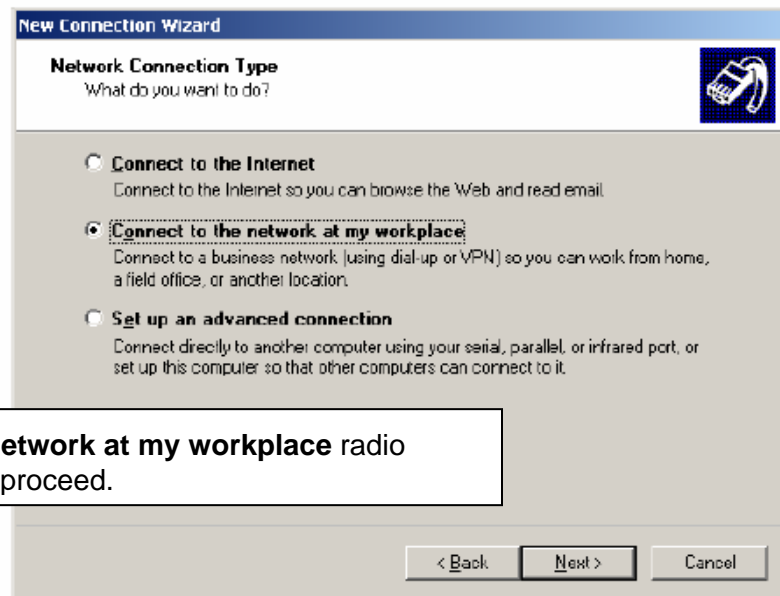
What you need:

- Laptop computer running Windows XP
- 802.11b/g compatible wireless Ethernet card installed.
- An established connection to BGSU's Wireless network.
<http://www.bgsu.edu/downloads/cio/file9411.pdf>

Configuring PPTP on a Windows XP Client

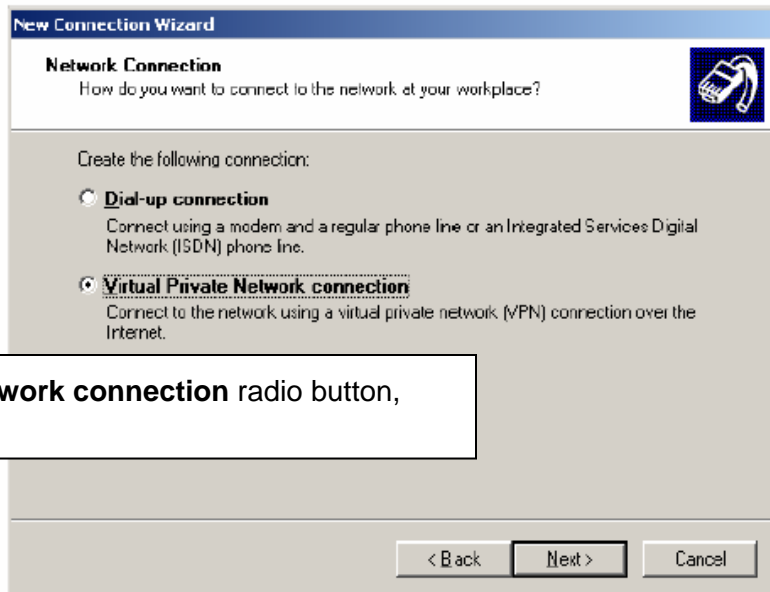
Follow these steps to configure a PPTP connection from a Windows XP client to the BGSU Wireless Network:

1. Select **Start/Control Panel/Network connections** from your Windows XP desktop.
The Network Connections window appears.
2. Click the **Create a New Connection** link in the Network Connections window.
The New Connection Wizard runs.
3. Click **Next** to proceed.
The **Network Connection Type** dialog appears.



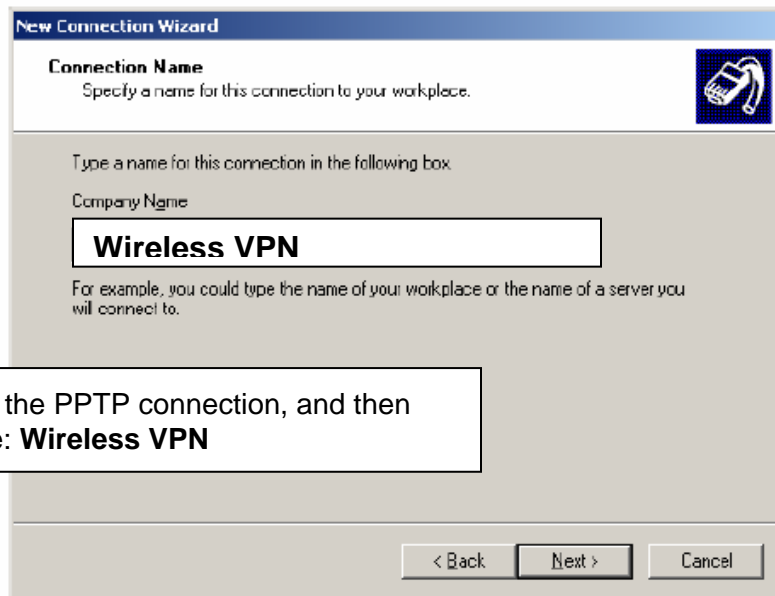
- 4.** Mark the **Connect to the network at my workplace** radio button, and then click **Next** to proceed.

The **Network Connection** dialog appears.



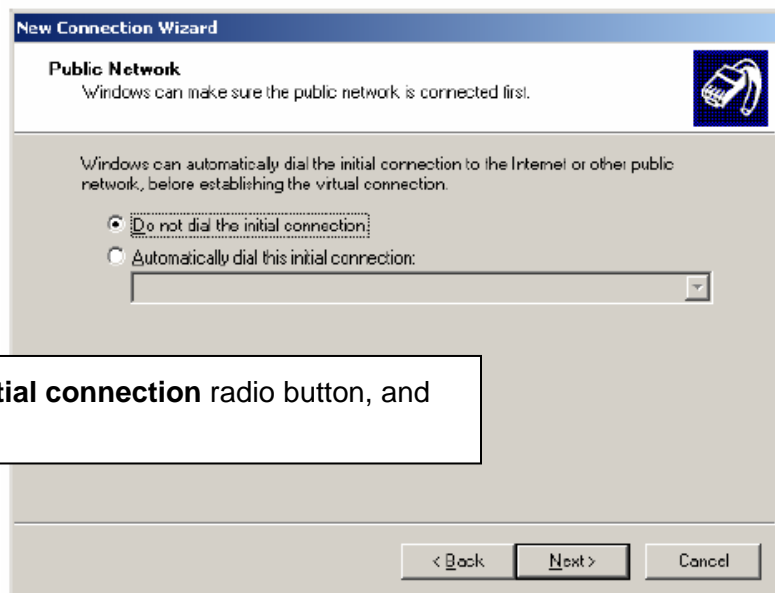
5. Mark the **Virtual Private Network connection** radio button, and then click **Next** to proceed.

The **Connection Name** dialog appears.



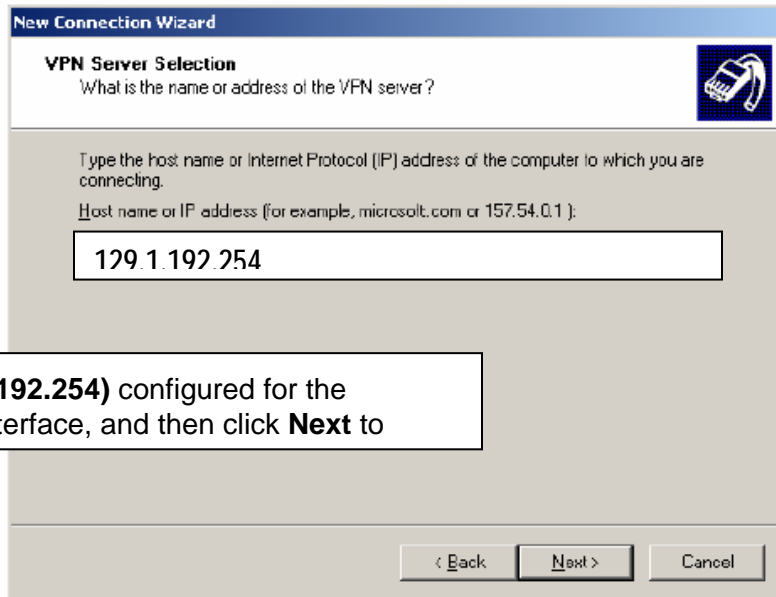
6. Enter a meaningful name for the PPTP connection, and then click **Next** to proceed. Example: **Wireless VPN**

The **Public Network** dialog appears.



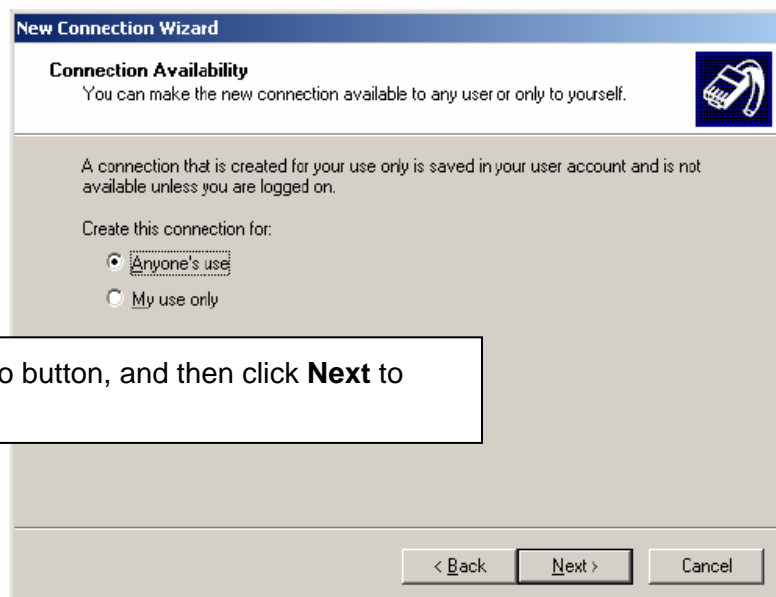
7. Mark the **Do not dial the initial connection** radio button, and then click **Next** to proceed.

The **VPN Server Selection** dialog appears.



8. Enter the IP address (**129.1.192.254**) configured for the Wireless Networks managed interface, and then click **Next** to

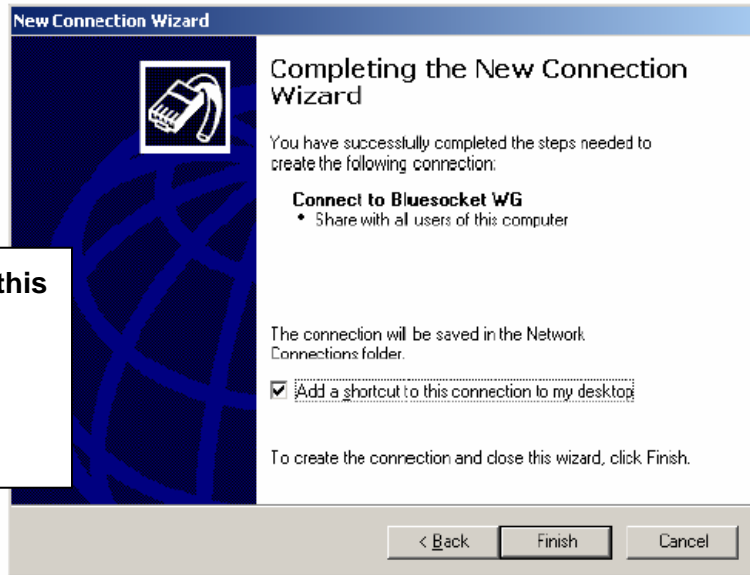
The **Connection Availability** dialog appears.



9. Mark the **Anyone's use** radio button, and then click **Next** to proceed.

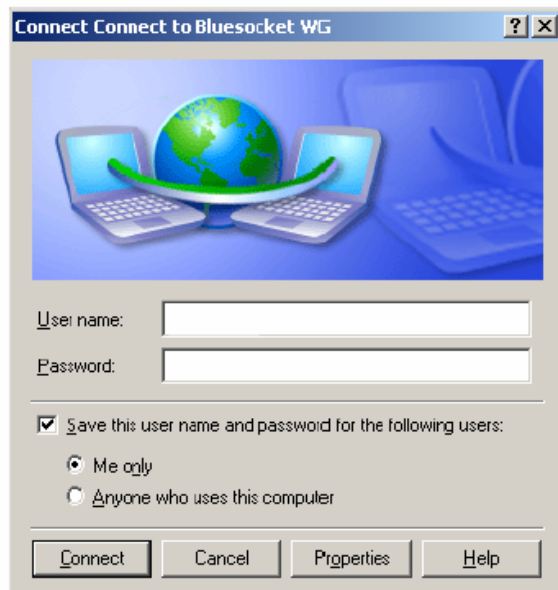
The **Completing the Network Wizard** dialog appears.

10. Mark the **Add a shortcut to this connection on my desktop** checkbox, and then click **Finish**



The **Connection** dialog appears enabling you to connect to the Wireless Gateway/VPN Server.

11. Customize the properties of your PPTP connection before connecting to the Wireless Gateway/VPN Server.
a) Click **Properties** in the connection dialog.

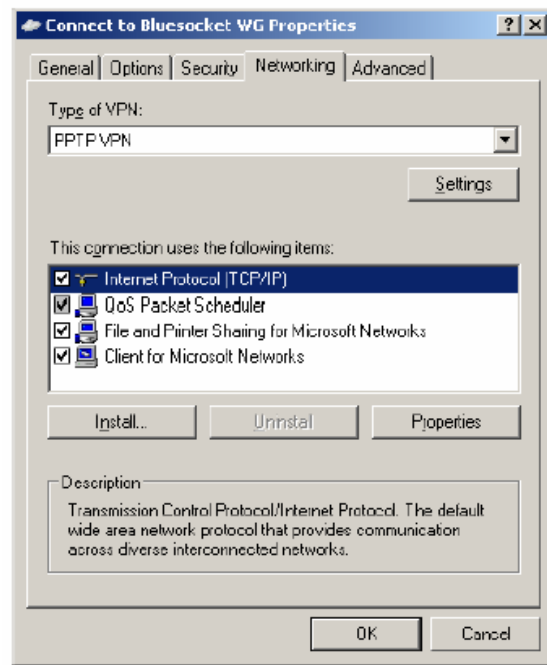


12. The **PPTP connection property** pages dialog appears.

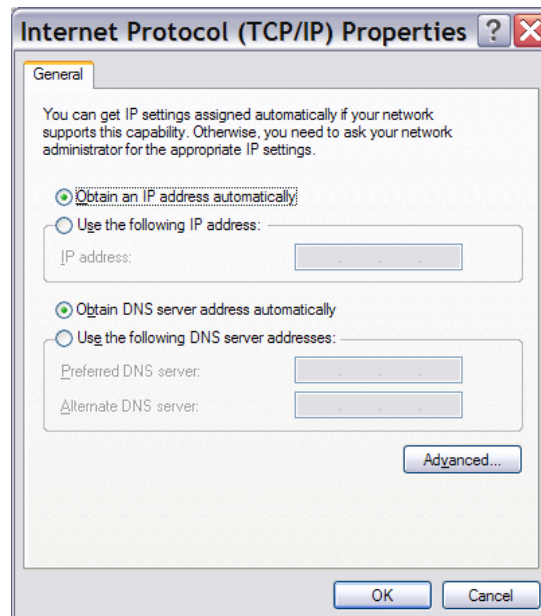
a) Click the **Networking** tab.
The Networking property page appears.

b) Select **PPTP VPN** from the **Type of VPN** drop-down menu.

d) Double Click Internet protocol (TCP/IP) and click advanced.



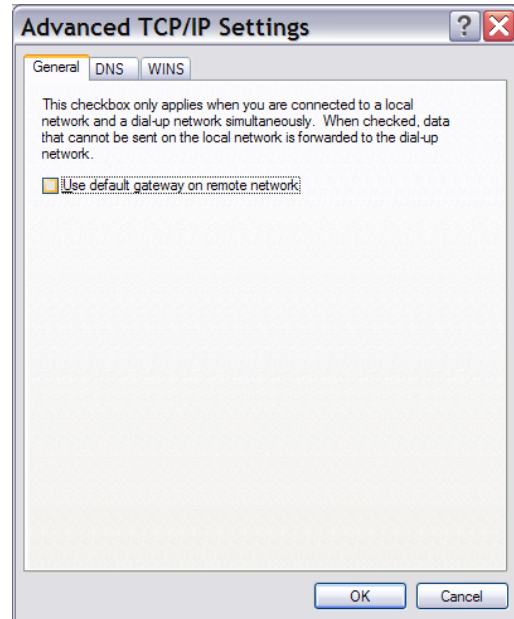
13. Click **Advanced**.



14. Uncheck the **Use default gateway on remote host**, then click **OK**.

Click **OK** on the Internet protocol(TCP/IP) Properties box

Click **OK** on the VPN properties box.



15. Enter your BGNet user name and password (the same one you use for email), and then click **Connect**.



You are now ready to more securely use BGSU's Wireless Network. If you have trouble accessing the network please disable, then re-enable your wireless LAN adapter and attempt the VPN connection again.