

BGSU Wireless Network



Mac OS X Tiger Client Setup Guide

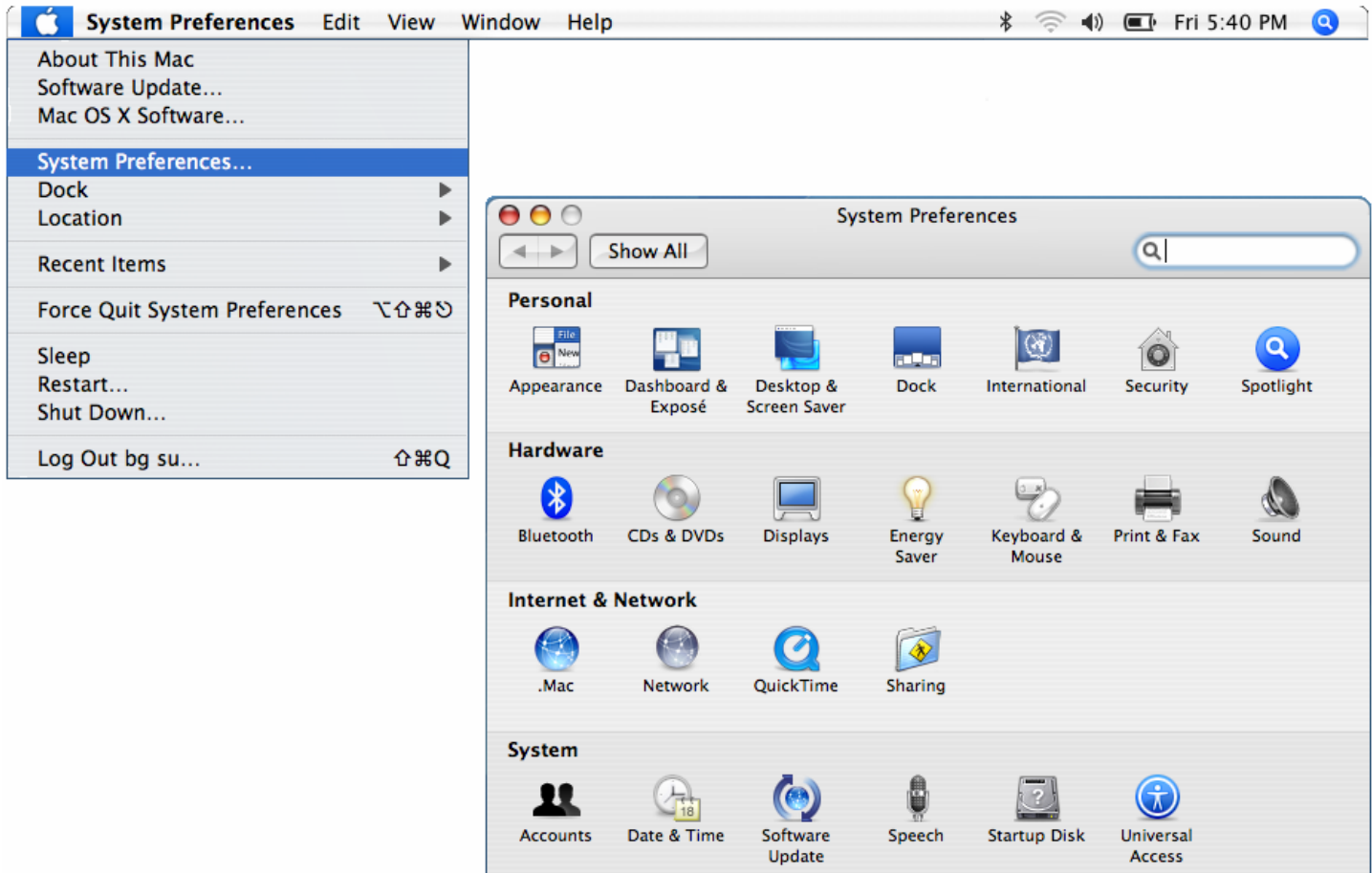
This step-by-step document assumes you have a factory or aftermarket AirPort/Airport Extreme adapter installed in your Apple running Mac OS X. You will also need a valid BGNet account to gain access to the wireless network.

For more information regarding wireless network access, recommendations and locations please visit www.bgsu.edu/its/network/. For assistance with wireless access please contact the TSC at (419) 372-0999.

1


Click the **Apple** menu and select **System Preferences**.

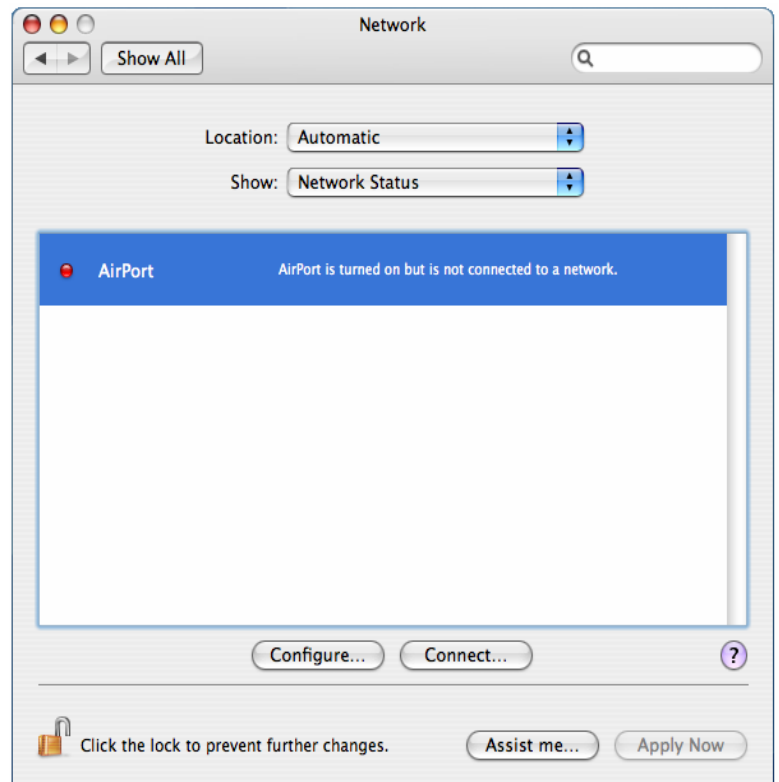
► Under Internetwork & Network, select **Network**.



2

In the Show menu select **Airport**.

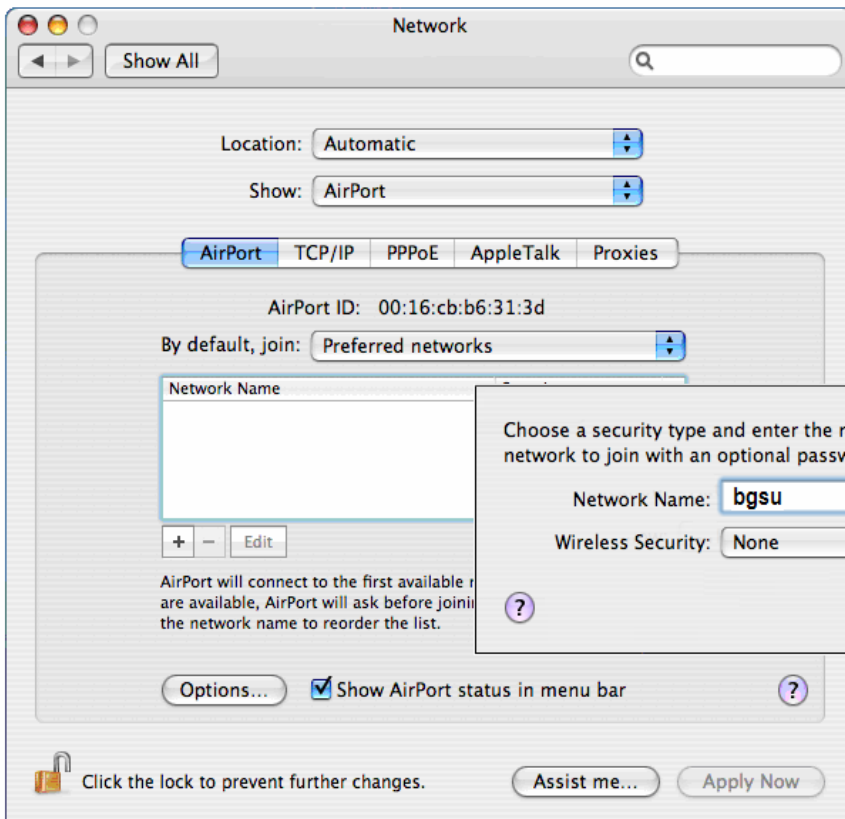
- ▶ Select **Preferred Network** from the By Default, Join menu.
- ▶ Click the  button to configure the network settings.

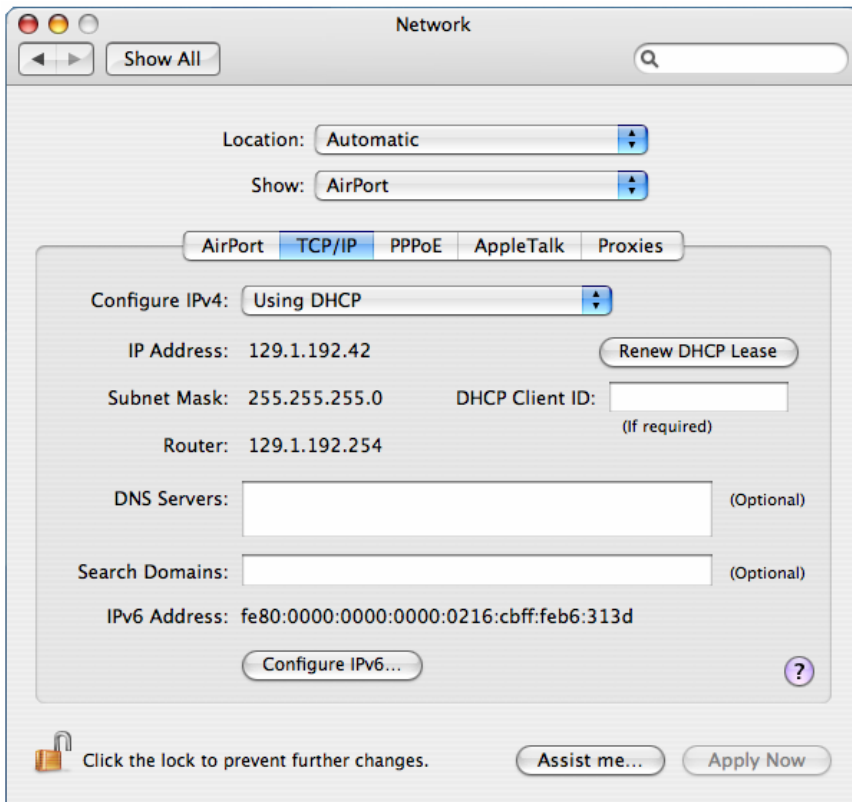


3

- ▶ In the Network Name field, enter **bgsu** (lower case) and click OK.

Note: Wireless Security should be set to **None**.

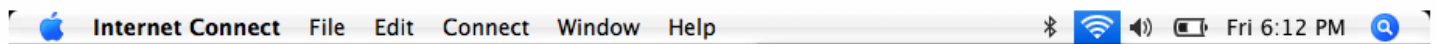





4

Select **TCP/IP**

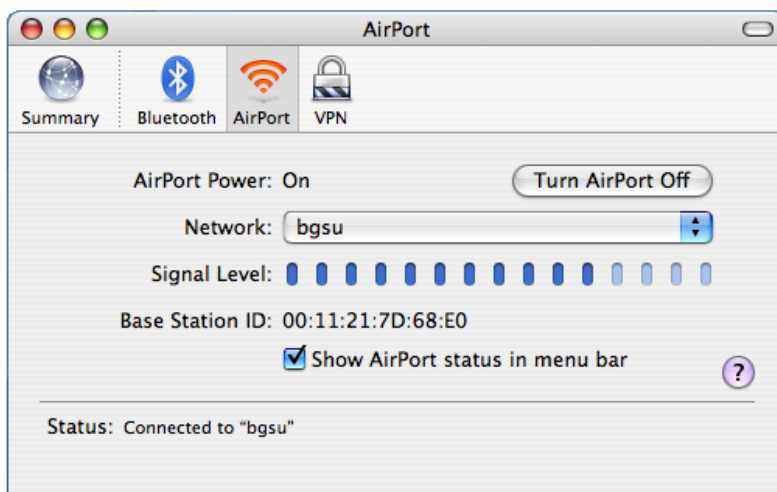
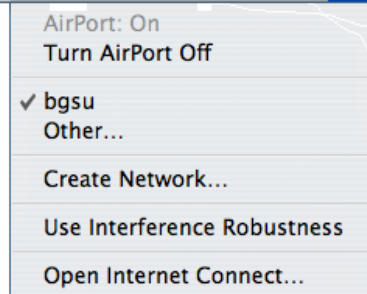
- ▶ Ensure the Configure IPv4 menu is set to **Use DHCP**.
- ▶ Click **Apply Now** and close window.



5

From the toolbar click the  AirPort indicator.

- ▶ Ensure **bgsu** is selected ✓.
- ▶ Select Open **Internet Connections**.

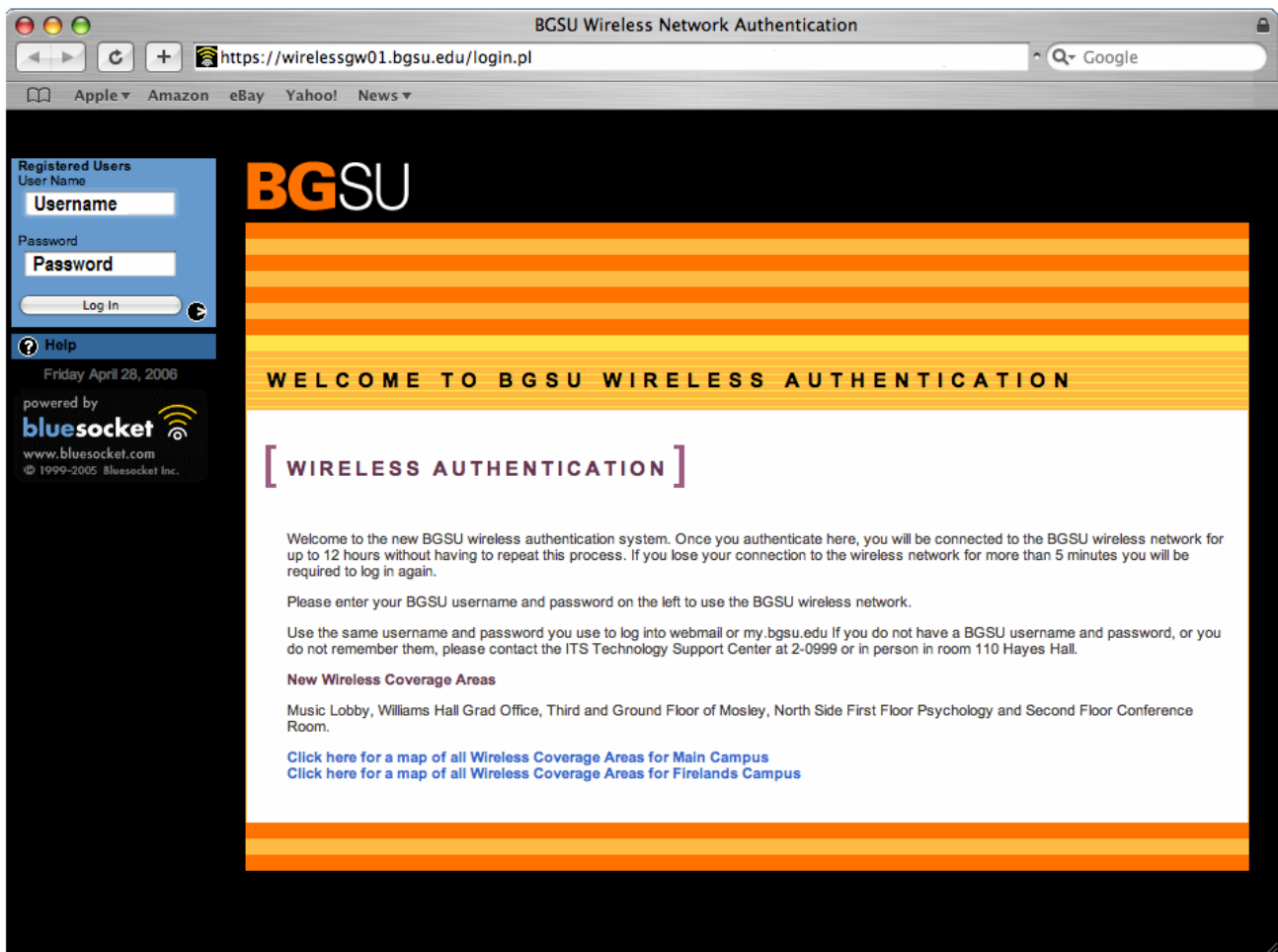


- ▶ If you are within range of BGSU's wireless network, you should see a signal level indication.

Open a web browser

6

- ▶ You should automatically be directed to BGSU's Wireless Authentication page.
- ▶ Enter you BGSU credentials in the required fields and Click **Log In**. Upon successful login you will be directed to your homepage.
- ▶ Also on this page are links to the wireless locations that you can access for both the Bowling Green and Firelands Campus.



- ▶ You may see a small pop-up window that allows you to log out when desired.



Enjoy!