

Accessing the BGSU Software Server

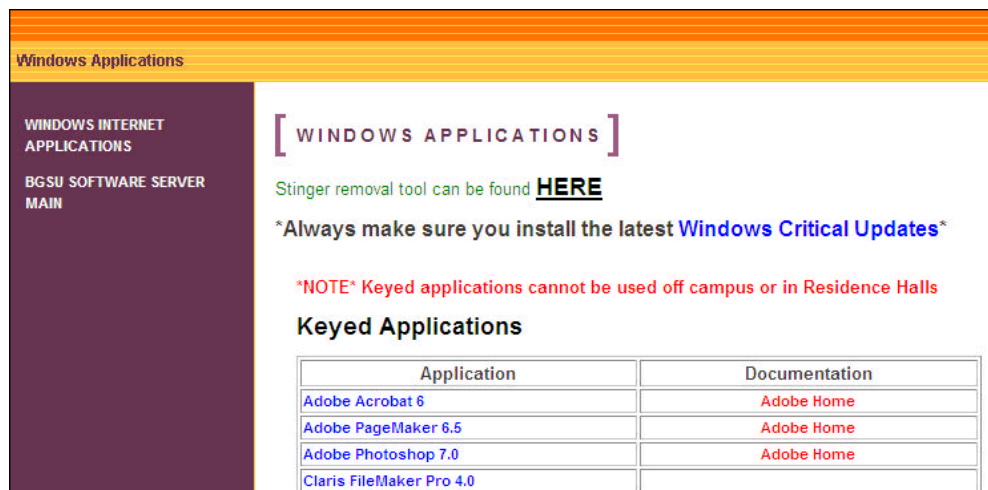
BGSU supports one web Software Server for both PC and Macintosh software. It can be accessed using a web browser at URL: <http://software.bgsu.edu/> by anyone connecting to BGSU's network on campus. Those off campus can download software from the server when they are on campus or get software from the Anti-Virus/Internet CD. For more information, see URL: <http://www.bgsu.edu/its/software/page10377.html>

The server contains a page of keyed/unkeyed applications and a page of Internet applications for both PC and Macintosh systems. Keyed applications are software products where the license count of items in use is controlled by the University Keyserver. Keyed applications are available ONLY for use on university-owned desktop computers (i.e., systems in campus labs and offices). They can be downloaded but will not run off campus or in Residence Halls. Unkeyed applications may include public domain software applications plus commercial software that BGSU has a site license to distribute to the campus community. Unkeyed applications and Internet applications are intended for any current BGSU faculty, staff or student.

If you don't find the application you are looking for and you need software for your University-owned computer system, you can contact the Technology Support Center at 419-372-0999 to see if it is available.

To install a Windows application from the BGSU Software Server:

1. **Type** this URL into your favorite browser: <http://software.bgsu.edu/>
2. On the BGSU Software Server home page, **click** Windows Software. In the body of the page that is displayed, you will see links to applications in the Application column and links to the software's home page or a readme file in the Documentation column. Readme files will contain instructions for entering license information if it is needed for the particular application.



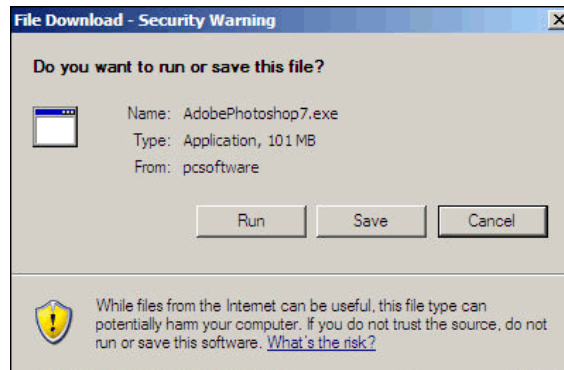
The screenshot shows a web browser window with the title "Windows Applications". On the left is a dark purple sidebar with navigation links: "WINDOWS INTERNET APPLICATIONS", "BGSU SOFTWARE SERVER", and "MAIN". The main content area has a header "[WINDOWS APPLICATIONS]" and includes a link for a "Stinger removal tool" pointing to "HERE". A warning states: "*Always make sure you install the latest Windows Critical Updates*". A red note says: "*NOTE* Keyed applications cannot be used off campus or in Residence Halls". Below this is a section titled "Keyed Applications" with a table:

Application	Documentation
Adobe Acrobat 6	Adobe Home
Adobe PageMaker 6.5	Adobe Home
Adobe Photoshop 7.0	Adobe Home
Claris FileMaker Pro 4.0	

Links to Windows Installers on the BGSU Software Server

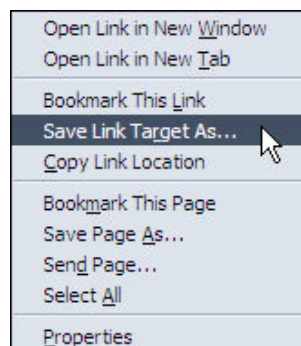
1. If you use Internet Explore, **click** on the link to the application you want to install. A file download window for that installer will appear. From the File Download window,

you may select either **Run** or **Save**. **Run** downloads the installer to your desktop and automatically starts the installation process. **Save** lets you download the installer to your desktop.



File download window for a Windows Installer (Internet Explorer)

If you use Netscape, **right click** on the link to the application you want to install. From the menu that appears, choose “Save Target As” and then save the installer to your desktop.

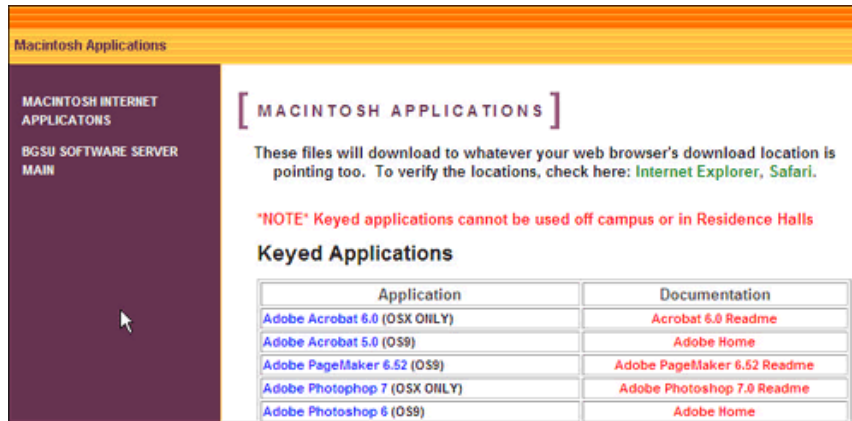


File download window for a Windows Installer (Netscape)

2. Double-click on the installer to start the installation process.
3. The installer setup process will complete the installation and provide customized windows with instructions to guide you through the process. Read the instructions and click on the appropriate option. The installation may take a few minutes. When the installation is complete, you should find a shortcut to launch the application on your Start menu. Some applications may specify that you to restart your computer before using them.
4. When the application is installed, you can put the installer in your Recycle Bin. It is a file with a unique icon and a .exe or .msi extension.

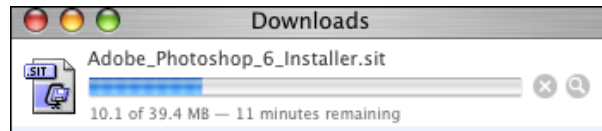
To install a Macintosh application from the BGSU Software Server:

1. Type this URL into your favorite browser: <http://software.bgsu.edu/>
2. On the BGSU Software Server home page, **click** Macintosh Software. In the body of the page that is displayed, you will see links to applications in the Application column and links to the software’s home page or a readme file in the Documentation column. ReadMe files will contain instructions for entering license information if it is needed for the particular application.



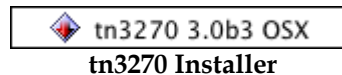
Links to Macintosh Installers on the BGSU Software Server

3. **Click** on the link to the application you want to install. A Downloads window will open displaying the status of your download request. A compressed file that includes files needed for the installation will be placed on your system in the download location specified in your browser's preferences. Click on the browser links on the server's Macintosh Applications page if you are not sure where to look to determine your download location.



Downloads window for a Macintosh Installer

4. The compressed file downloaded (a .sit file) will be automatically unpacked by Stuffit Expander. The file(s) extracted will also appear in the same directory as the compressed file (e.g. your browser's download location). Double click on the installer. It will look similar to the installer shown below.



5. The installer setup process will complete the installation and provide customized windows with instructions to guide you through the process. Read the instructions and click on the appropriate option. The installation may take a few minutes. Some applications may specify that you to restart your computer before using them.
6. When the application is installed, you can put the installer and any other files associated with it in your download folder into your Trash Can.

For problems with software on the BGSU Software Server, clients can contact the Technology Support Center (TSC) in person at Hayes Hall, room 110, or by phone at 419-372-0999. Problems can be also reported to the TSC by using the TSC Online Submission form at URL:

<http://www.bgsu.edu/its/tsc/page9500.html>