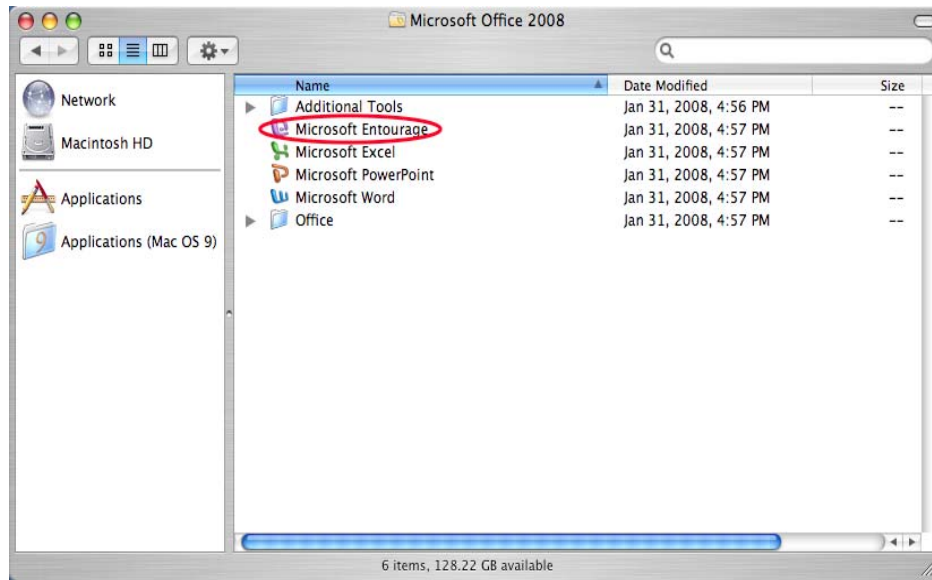
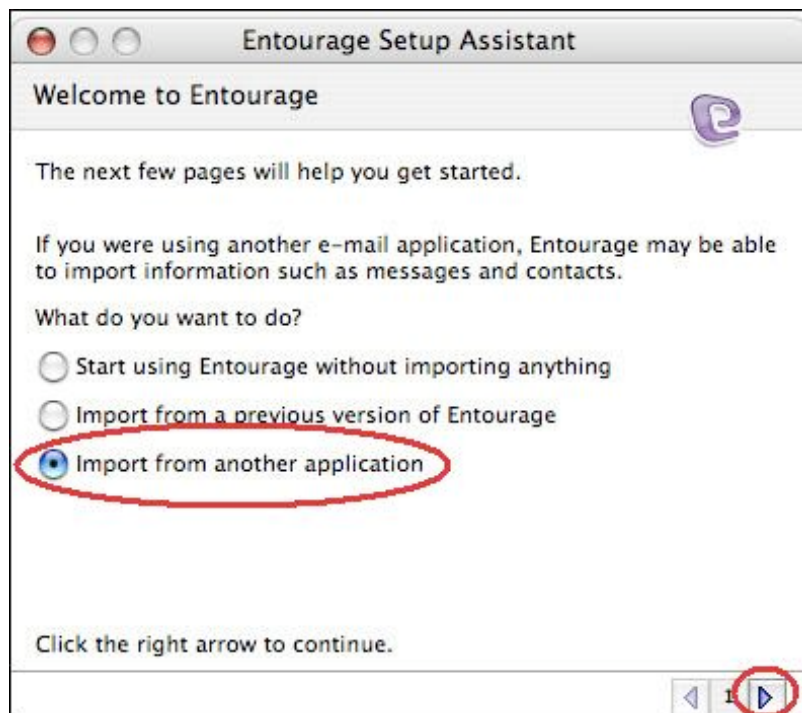


Importing Qualcomm Eudora (5.0 or later) into Microsoft Entourage 2008

- 1) Locate and launch Microsoft Entourage 2008.



- 2) Upon your first launch of Microsoft Entourage 2008, you will be greeted by the "Entourage Setup Assistant". Choose the "Import from another application" option, and click the right arrow to proceed.



Importing Qualcomm Eudora (5.0 or later) into Microsoft Entourage 2008

- 3) Choose the “Qualcomm Eudora (5.0 or later)” option, and click the right arrow.

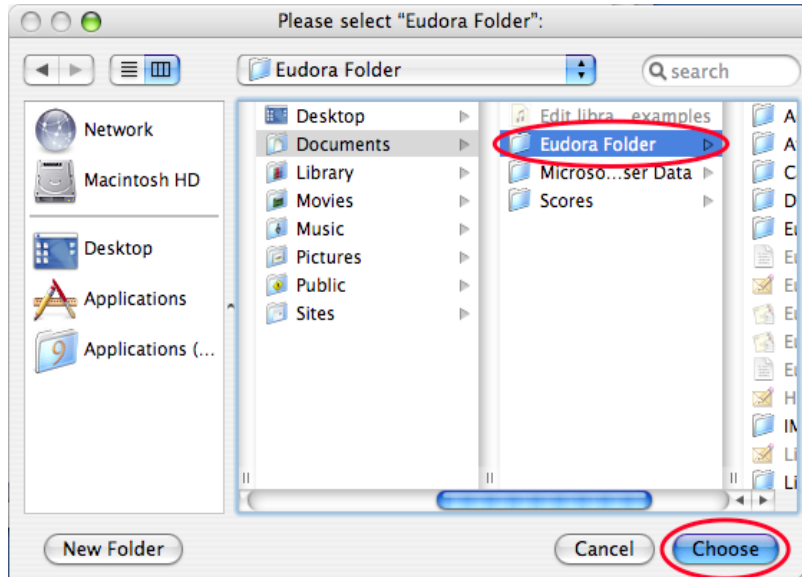


- 4) Deselect the “Accounts” option, and leave all of the other options checked, then click the right arrow to proceed.



Importing Qualcomm Eudora (5.0 or later) into Microsoft Entourage 2008

- 5) From the “Please select Eudora Folder” window, left-click once on the “Eudora Folder” to highlight it, and then click the “Choose” button.



- 6) Click the “Finish” button to complete the importation process.

