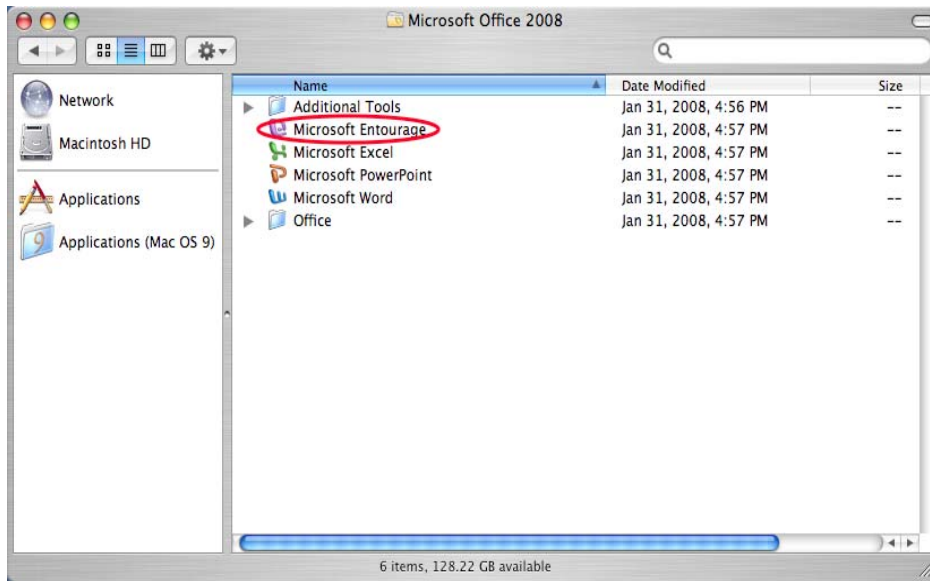
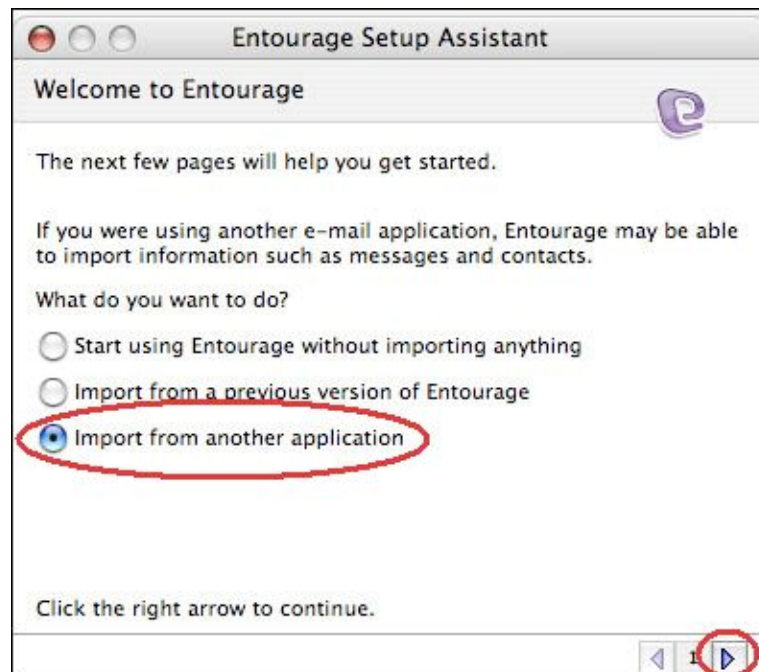


Importing Apple Mail into Microsoft Entourage 2008

- 1) Locate and launch Microsoft Entourage 2008.



- 2) Upon your first launch of Microsoft Entourage 2008, you will be greeted by the "Entourage Setup Assistant". Choose the "Import from another application" option, and click the right arrow to proceed.

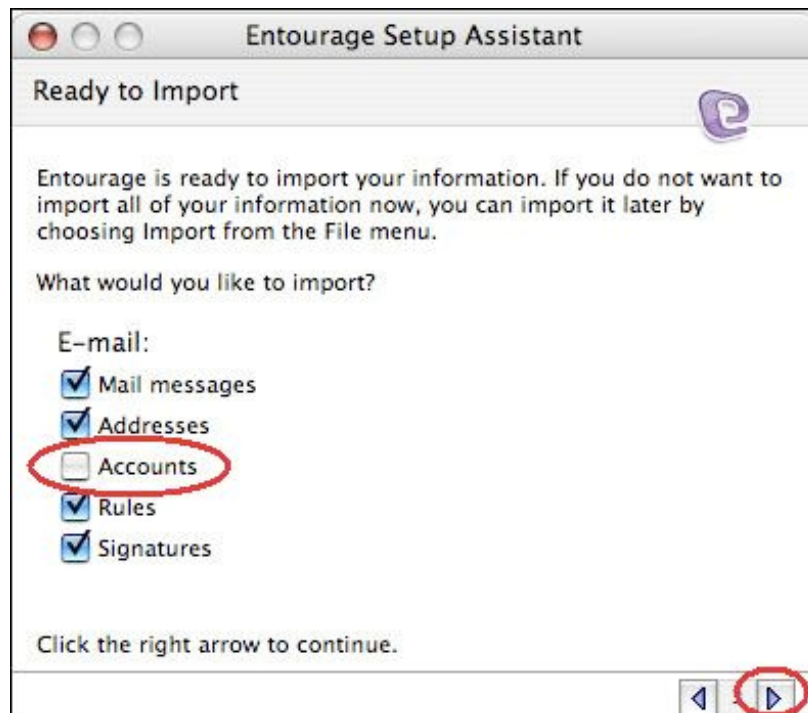


Importing Apple Mail into Microsoft Entourage 2008

- 3) Choose the “Apple Mail” option, and click the right arrow to proceed.



- 4) Deselect the “Accounts” option, and leave all of the other options checked, then click the right arrow to proceed.



- 5) Click the “Finish” button to complete the importation process.

