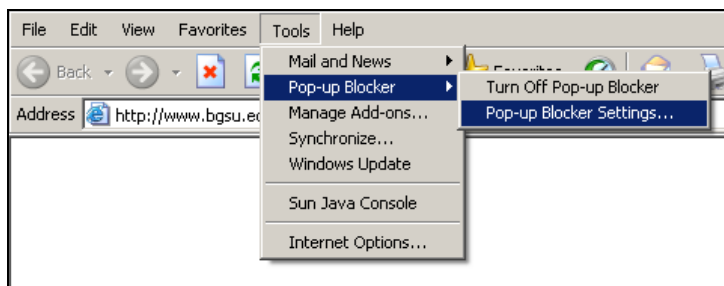


How do I enable pop-ups for the CMS servers on Internet Explorer for the PC before I start using the Rhythmyx Content Management System (CMS)?

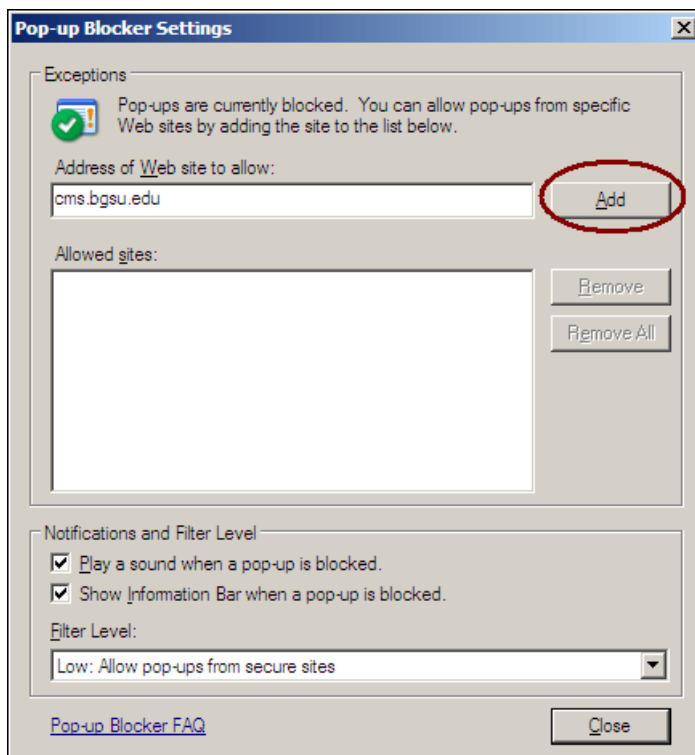
Several windows used in Content Explorer, (such as Content Editors, search windows, and Active Assembly windows) are displayed as pop-ups. If you have the built-in popup blocker for Internet Explorer enabled, it will prevent the display of these windows. Since Internet Explorer's pop-up blocker is able to selectively allow pop-up windows from certain web sites, you can configure it to allow only the pop-ups created by BGSU's CMS servers.

To configure the Microsoft Pop-up Blocker to allow only pop-ups from the CMS servers:

- 1) Open Internet Explorer.



- 2) On the **Tools** menu, point to **Pop-up Blocker**, and then click **Pop-up Blocker Settings**. If the Pop-up Blocker Settings... option is grayed out, your Pop-up blocker is turned off. Click 'Turn On Pop-up Blocker' to make the Pop-up Blocker Settings... option available.



- 3) To permanently allow pop-up windows from BGSU's CMS servers, type cms.bgsu.edu in the **Address of Web site to allow** box, and click **Add**. Then repeat the process for cmstest.bgsu.edu. When you have completed these tasks, both servers will appear in the Allowed sites box.
- 4) Click Close when finished.