



WS_FTP AND FETCH

CLASSWORK ACCOUNTS

Classwork accounts are accounts created by instructors for their students to use through the duration of that specific class. Instructors for specific courses only use these accounts. If a classwork account has been created for you for a specific class that instructor will assign a username and password.

Below is the BGSU classwork homepage (Figure 1).

BGSU HOME NEWS ATHLETICS ATHLETICS ADMISSIONS LIBRARIES

BGSU CLASSWORK SERVER

[CLASSES WITH WEB SPACE FOR SPRING 2006]

- [Intro to Engineering Design / Principles of Engineering - Spriggs](#)
- [EDFI 408 - Schmidt](#)
- [JOUR 490 - Foust](#)
- [TCOM 451 - Kling](#)
- [Continuing and Extended Education - Koenig](#)
- [ARTD 302 - Kim](#)
- [ENG 207 - Speweik](#)

[CLASSES WITH WEB SPACE FOR SUMMER 2006]

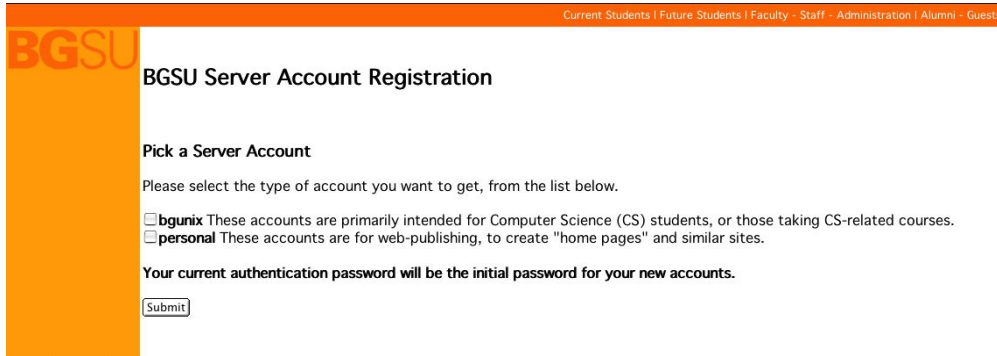
- [Continuing and Extended Education - Koenig](#)

Accounts can be created for teaching faculty by submitting the [Technology Support Center Online Form](#) and requesting number of students in your class section. Include the course abbreviation and number in the request (e.g., TCOM 441).

Figure 1.

PERSONAL WEB ACCOUNTS

Personal accounts for students are available at BGSU. To access your web space, log onto your MyBGSU account and click "Add Server Account" in the "My Computer Accounts" panel. You should see a page like the following (Figure 1):



The screenshot shows a web page titled "BGSU Server Account Registration". At the top, there is a navigation bar with links for "Current Students", "Future Students", "Faculty", "Staff", "Administration", "Alumni", and "Guests". The BGSU logo is on the left. The main content area has the heading "BGSU Server Account Registration" and a sub-heading "Pick a Server Account". Below this, it says "Please select the type of account you want to get, from the list below." There are two radio button options: "bgunix" (described as for Computer Science students) and "personal" (described as for web-publishing). A note states: "Your current authentication password will be the initial password for your new accounts." At the bottom of the form is a "Submit" button.

Figure 1.

Most students will check the box for a personal account. After submitting you will need to read a list of BGSU rules and regulations regarding proper use of a personal account. Your username and password will be the same as your webmail and MyBGSU account. It may take at least an hour after submitting before your server will be activated.

OTHER WEB ACCOUNTS

Other types of web accounts are available through various other organizations. Local Internet service providers such as **Wood County Free-Net** offer web space along with the fees that apply for providing the Internet. There are also many Internet service providers that will allow you to create and put your own web pages on the Internet free of charge. A few examples include **Geocities**, **Angelfire**, and **ACMEcity**.

Please remember that these web sites are not under the administration of StudentTech or BGSU, and that questions and comments pertaining to that site should be directed to the appropriate site.

TYPES OF FILES THAT CAN BE UPLOADED

The following is a list of some common web file format suffixes and their descriptions. This list is limited to only the most common web file formats. Be aware that there are many more web file formats out there.

FILE SUFFIX	DESCRIPTION
.au	The most common sound format on the web
.gif	Graphical Interchange Format, the most common graphics format on the web
.html, .htm	Hypertext Markup Language, the code the web is written in as a plain text file
.image	Macintosh Disk Image, the most common on Apple's FTP sites
.jpg, .jpeg	A 24 bit graphic format
.mpg, .mpeg	The standard movie format for the Internet
.mov, .qt, .movie	Quicktime Movie, Apple Macintosh movie platform
.pdf	Adobe Acrobat Portable Document Format.
.tiff	Large high quality image format
.wav	Sound file format

USING FETCH 4.0.3 FOR THE MACINTOSH

Fetch is an Internet application that allows you to upload files to the Web on a Macintosh computer. It allows users to transfer files using the File Transfer Protocol (FTP). It is free of charge for those using it for educational purposes. Fetch allows you to transfer files between a Macintosh and another computer, which allows users to use the other computer as a holding place for Macintosh files. In addition, it enables you to transfer files, such as TIFF, GIF, or JPEG files between different computers so programs on each computer can use them.

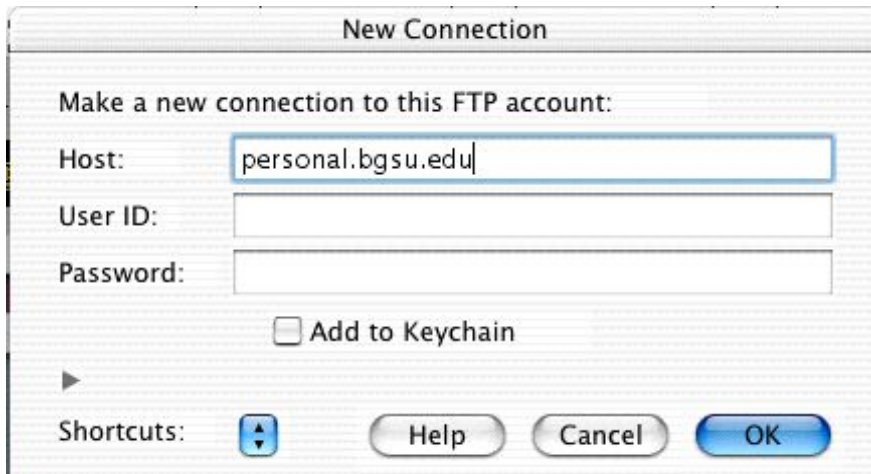


Figure 1.

To upload files to your personal BGSU account, the host will be as entered above in the Fetch window (Figure 1). The User ID and Password will be the same as your webmail and MyBGSU services. Clicking OK on this window will connect your computer to the server. When connected, you can simply drag and drop files to and from the server using Fetch.

USING WS FTP FOR THE PC

Windows Sockets File Transfer Protocol (WS_FTP) is the ITS supported File Transfer Protocol (FTP) program for PC computers at BGSU. It is the PC version of the FTP program Fetch, which is used on the Macintosh computers on campus. Like Fetch, it is a free Internet application for educational purposes that are used to upload files to the Web. You can download WS_FTP at Download.com.

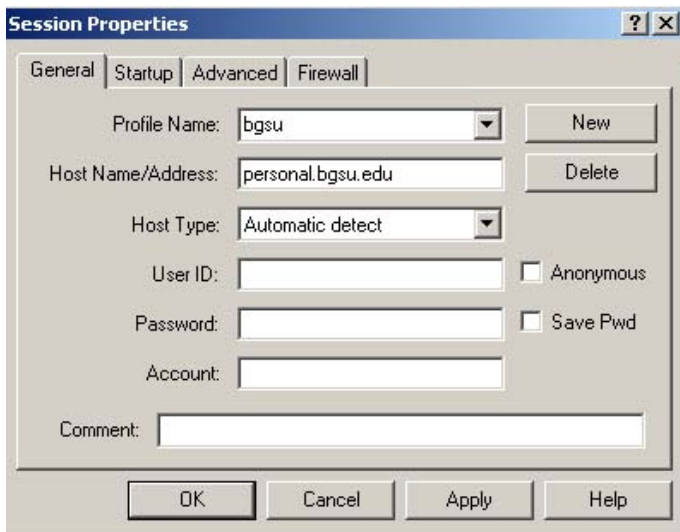


Figure 1.

To upload files to your personal BGSU account, the host will be as entered above in the Session Properties Window (Figure 1). The User ID and Password will be the same as your webmail and MyBGSU services. Clicking OK on this window will connect your computer to the server. When you have connected, you will see a window similar to the one shown below (Figure 2).

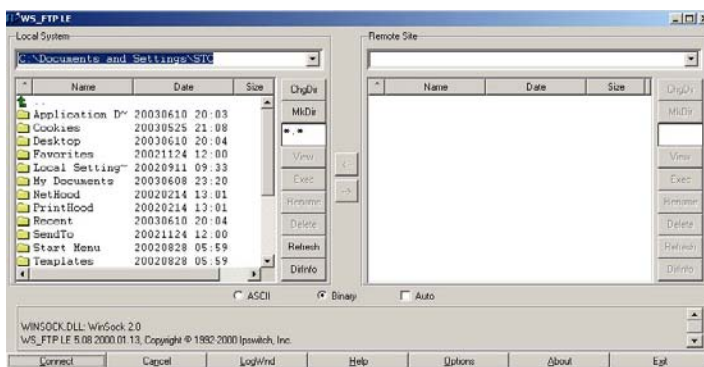


Figure 2.

The left panel contains the files on your computer, and the right panel displays information that has been placed on the server. Simply select which files you want to move and then click the appropriate arrow.

