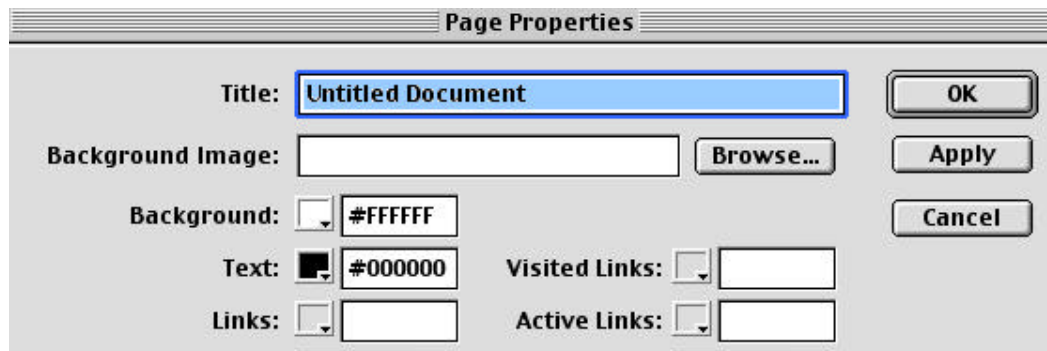


Using Dreamweaver 4 to Construct Your Portfolio

Now it's time to hit the drawing board. From the Applications/Programs menu, select "Dreamweaver 4." When it prompts you to "Define a Local Root Folder," click cancel. You should create a folder instead on your zip disk that will hold all files related to your webpage/portfolio. (Remember to create file and folder names < or = 8 letters in length.)

Getting Started

First, select Modify Page Properties and choose a name for your site (this may be longer than 8 letters but should show an awareness of audience).

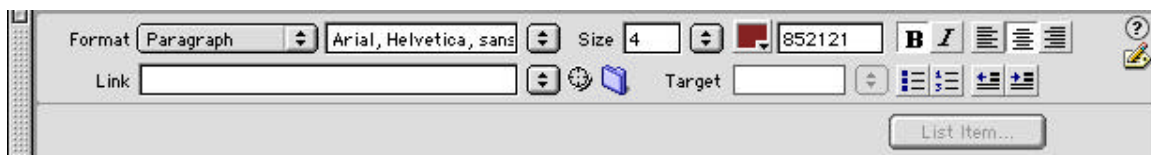


You may also select either a background image or color as well as text and link colors from this box.

Be sure to save, and save often!

Creating Links

You will create a main or "Splash" page which will be the first page visible to Internet viewers. This page should include links to other pages with more content on them. Anytime you would like to create a new page for different content, select "New" from the "File" menu, and then save the document. From your main/splash page, you can then highlight the text (or click on the image if it is an image you want to create a hyperlink for), and type the URL (by copy and pasting it) or select the file (see image below; you would click on the image of the file folder next to the "Link" line).



Be sure when you link to a file that it just contains the name of the file, not the name of the folder it came from. (i.e. The file name should look like this "index.html," not "D:/webstuff/index..html")

Images

To add an image: Save the image to your “Webstuff”(or whatever you’ve called it) folder on your Zip disk in .jpg or .gif format. (Note: For instructions on using Adobe Photoshop and modifying images, see the Photoshop handout.) Then, from inside Dreamweaver, select “Insert” > “Image.”

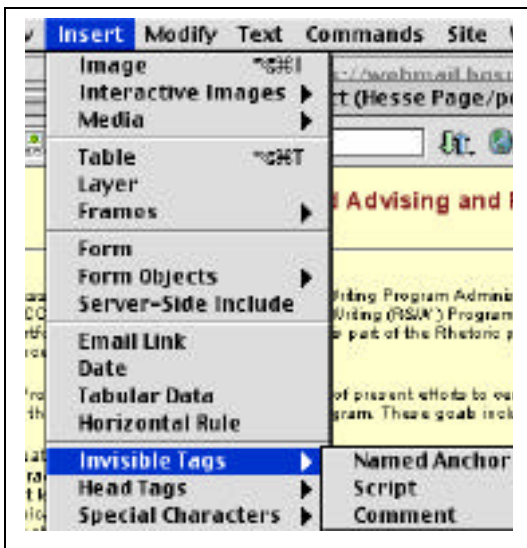
You can create fancy image effects and special effects by experimenting on your own or using the “Lessons” available under the “Help” menu.

Using Tables/Layers

Layers are tricky as a way to organize text/content, but may be best suited for some of your purposes. Layers do tend to reposition themselves depending on the monitor or browser.

Tables can be used to organize text/images/links. Select “Insert” > “Tables” from the menu for this option.

Creating Anchors (or links within one page)



For this you will select the text that you will link to, and from the menu, select “Insert” > “Invisible Tags” > “Named Anchor” (image, left).

Then, inside the Dreamweaver document, highlight the text that you will create a link from (as in a list at the top of the page, etc.), and dragging an arrow from the file compass (see image, right), scroll to the “Named Anchor” you created.

