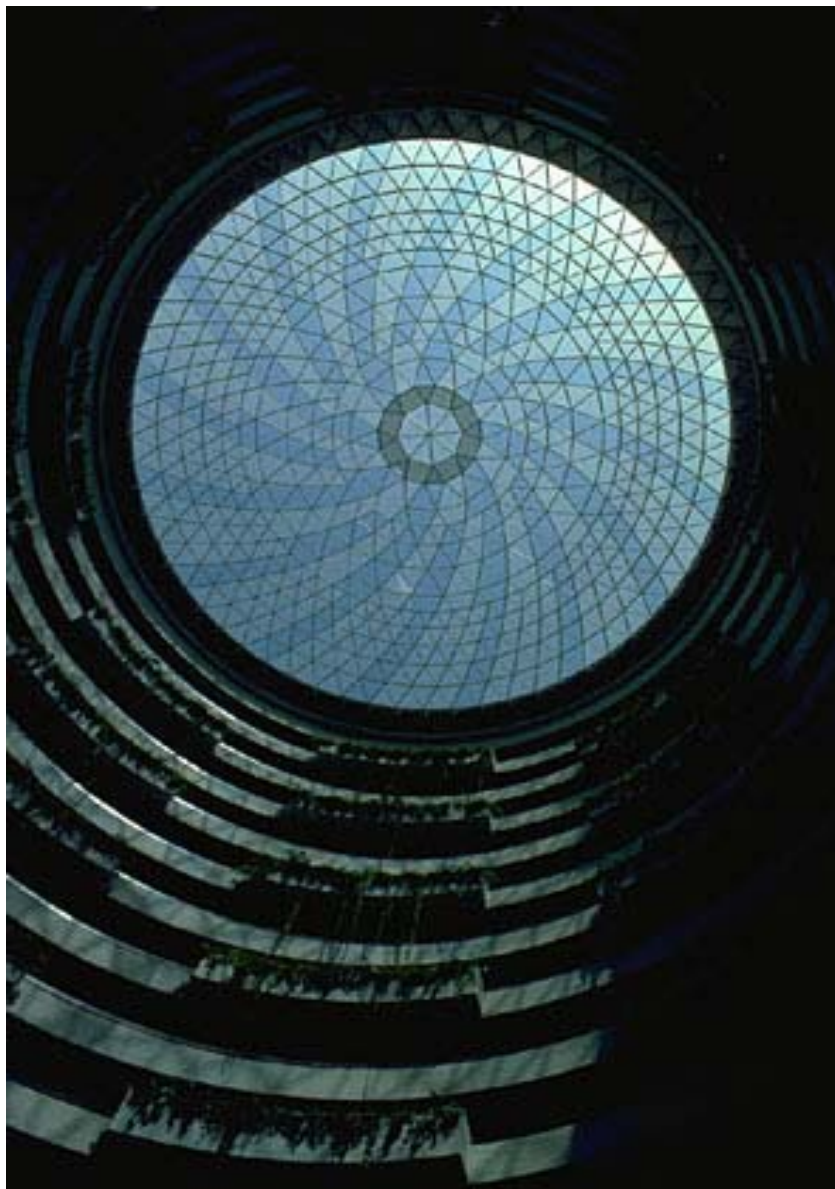


Bowling Green State University
External Grants and Contracts: FY2003 Annual Report
Summary of Activities: Awards & Submissions

Office of the Vice Provost for Research
Office of Sponsored Programs and Research

Research and Creative Works



Executive Summary

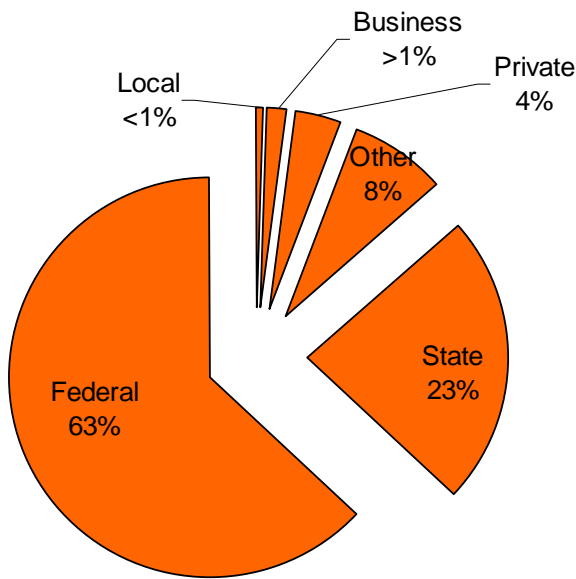
Bowling Green State University is moving impressively forward in research, scholarship and creative endeavors. The university encourages and supports these activities as vital measures of the institution's overall growth and development. As we implement the institution's Academic Plan, we further enhance the culture of inquiry and research at BGSU, and we work hard at sustaining the comprehensive infrastructure that supports our faculty in their research and artistic endeavors. As we do this, the relationship between graduate studies and research becomes more integrally linked, and the effect of that integration is also felt at the undergraduate level as we formalize the program in undergraduate research.

BGSU has become a partner to regional and state-wide institutions and selected industries. Through these relationships we have been successful in leveraging state and federal funding at a level we never before thought possible. Our participation in the Governor's Third Frontier is recognized throughout the state. Our centers of excellence are now developing strategies for achieving more long-term partnerships. Successes of the past year have given us good reason to stay the race and to actively compete.

The following pages provide a profile of our accomplishments. For more details, please visit our web site at <http://www.bgsu.edu/offices/spar>.



FY2003 Award Dollars by Sponsor Type



Local	\$109,064
Business	\$257,619
Private	\$645,524
Other	\$1,373,582
State	\$4,052,592
Federal	\$11,014,577
Total	\$17,452,958

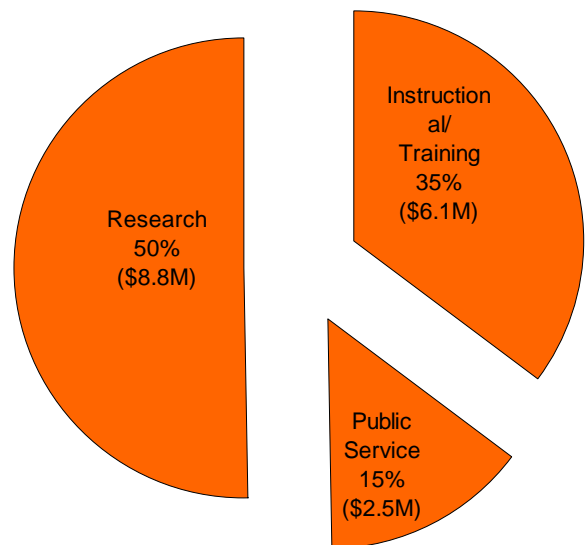
Federal Sponsors continue to provide BGSU with its major source of support for externally funded research. Typical of previous years, the National Institutes of Health, National Science Foundation, and the US Department of Education account for the bulk of the federal funding.

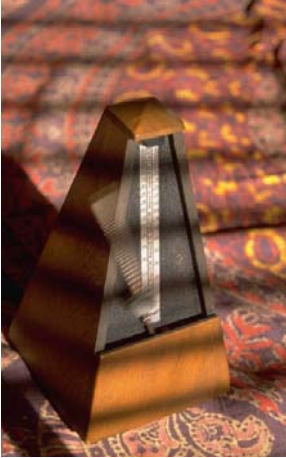
In addition to awards received directly from federal agencies, BGSU receives a significant amount as "flow through" by way of sub-awards from other organizations which have received federal grants. These include state agencies, Ohio universities, and institutions of higher education throughout the US.

FY2003 Award Dollars by Activity Type

Research	\$8,825,289
Instructional/Training	\$6,094,771
Public Service	\$2,532,898
Total	\$17,452,958

Consistent with previous fiscal periods, research continues to account for the largest percentage of awarded dollars for the year. Also as in previous years, instructional or training activities continue to represent approximately 35% of the awarded dollars. Both research and instructional activities have increased significantly in awarded dollars over the past several years. Public service awarded dollars have remained relatively consistent.





Summary of Sponsored Programs and Research Activity Fiscal Year 2003 (July 1, 2002 – June 30, 2003)

In FY 2003, the institution experienced a 20% increase in the number of submissions and a 32% increase in the amount of funding requested.

Total awarded dollars remained constant over the last two years. It is important to note that university support for sponsored programs and research increased over 56%. In FY 2002, the institution contributed two dollars for every one dollar awarded. In FY 2003, the institution contributed three dollars for every one dollar awarded. Contributions from other sources remained relatively constant.

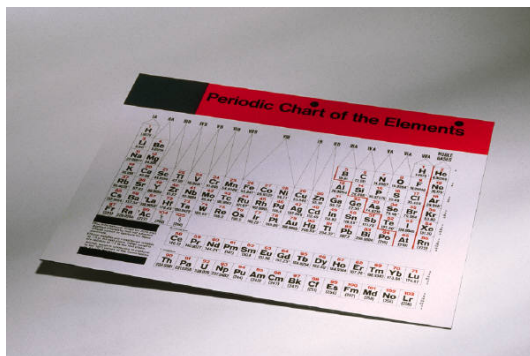
Submissions	FY2002	FY2003
Total Number of Submissions	326	392
Total Dollars Requested	\$29,452,629	\$38,769,098
Total Number of Sponsors	145	164
Total Number of Faculty	180	183
Awards		
Total Number of Awards	211	227
Total Dollars Awarded	\$17,304,882	\$17,452,958
Total Number of Sponsors	109	120
Total Number of Faculty	139	160
Principal Investigators	130	127
Co-Investigators	49	56
Total Cost-Share BGSU	\$5,894,503	\$9,220,766
Total Cost-Share Other Sources	\$913,905	\$1,043,220
Research Expenditures		
Direct Costs	\$12,431,748	\$13,668,874
F&A	\$1,093,526	\$1,456,997
Total	\$13,525,274	\$15,122,871

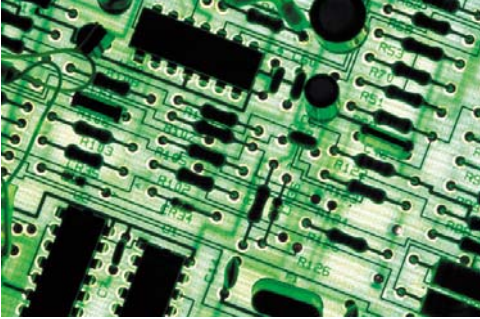




TOP TEN SOURCES AWARD DOLLARS FY 2002 and FY 2003

Name of Funding Agency	2002			2003		
	No. of Awards	Total Dollars Awarded	Avg. Award	No. of Awards	Total Dollars Awarded	Avg. Award
National Institutes of Health	20	\$2,637,200	\$131,860	21	\$3,038,045	\$144,669
U.S. Dept. of Education	8	\$2,848,407	\$356,051	7	\$2,555,096	\$365,014
Ohio Dept. of Development	1	\$52,000	\$52,000	2	\$2,041,000	\$1,020,500
National Science Foundation	21	\$1,338,805	\$63,753	19	\$1,574,868	\$82,888
Western Michigan University	2	\$691,558	\$345,779	2	\$987,547	\$493,774
Ohio Board of Regents	13	\$3,169,161	\$243,782	9	\$973,443	\$108,160
U.S. Dept. of Commerce	2	\$230,000	\$115,000	2	\$805,898	\$402,949
Corp. for Public Broadcasting	2	\$698,373	\$349,187	2	\$740,534	\$370,267
Ohio Dept. of Job & Family Services	1	\$200,000	\$200,000	2	\$320,000	\$160,000





Funding By Academic Unit

College	FY2001/2002	FY2002/2003
Arts and Sciences	\$7,928,288	\$8,704,636
Education & Human Dev.	\$2,144,782	\$2,000,672
WBGU	\$1,306,642	\$1,725,387
Academic Affairs	\$1,107,257	\$1,513,450
Health & Human Services	\$968,324	\$1,261,461
Student Affairs	\$1,134,933	\$1,203,609
Graduate College	\$711,542	\$629,498
Technology	\$1,357,268	\$162,784
Continuing Education	\$60,500	\$73,342
Firelands	\$48,247	\$51,691
Libraries & Learning Res.	\$410,200	\$44,500
Business Administration	\$90,203	\$43,044
Musical Arts	\$36,696	\$38,884
	\$17,304,882	\$17,452,958





Funding Distribution by Faculty Academic Rank, Fiscal Year 2003

	Assistant Professor	Associate Professor	Full Professor	Other	All
No. of Individuals	37	34	33	23	127
No. of Awards	60	76	57	34	227
Avg. #/individual	1.62	2.24	1.73	1.48	1.79
avg. \$/individual	\$72,720	\$141,495	\$186,820	\$164,628	\$137,425
Avg. Award	\$44,844	\$63,300	\$108,159	\$111,366	\$76,885
Total Awards	\$2,690,645	\$4,810,825	\$6,165,048	\$3,786,440	\$17,452,958
% of BGSU Total	15%	28%	35%	22%	100%

No. of Awards by Dollar Range

\$0-\$49,999	39	58	33	23	153
\$50K-\$99,999	12	7	11	3	33
\$100K-\$199,999	7	4	7	1	19
\$200K-\$499,999	2	5	4	4	15
>\$500,000	0	2	2	3	7
	60	76	57	34	227

Research Activity Types

Award Dollars by Activity Type

Research	\$1,703,773	\$1,536,322	\$5,265,062	\$320,132	\$8,825,289
Instruct/Training	\$922,642	\$3,219,683	\$483,642	\$1,468,804	\$6,094,771
Public Service	\$64,230	\$54,820	\$416,344	\$1,997,504	\$2,532,898
	\$2,690,645	\$4,810,825	\$6,165,048	\$3,786,440	\$17,452,958

No. of Awards by Activity Type

Research	44	25	38	4	111
Instruct/Training	13	47	12	15	87
Public Service	3	4	7	15	29
	60	76	57	34	227



COMPLIANCE ISSUES

HSRB Activities: 261 New HSRB application reviews
 178 Project continuations
 151 Project addendum requests

IACUC Activities: 22 New IACUC protocols
 35 Annual renewal requests
 25 Protocol addenda reviewed

IBC Activities: 3 Proposals received

INTERNAL FUNDING INITIATIVES

\$155,951 Internal Awards 2003
 \$90,637 Internal Awards 2002
 \$436,199 Facilities & Administrative Costs (F&A)
 returned to colleges, departments, and the
 Graduate College
 \$241,893 Research Challenge Funding



PATENT ACTIVITY

	2000	2001	2002	2003
Disclosures	5	2	1	9
Patents Filed	2	2	0	2
Patents Issued	1	1	0	1

Active University Patents:

Newman, David

"Electrolytic Sodium Sulfate Salt Splitter Comprising a Polymeric Ion Conductor."
 Issued July 27, 1999

Palumbo, Anthony, Major, Jeff, Gruenwald, Robert

"Hybrid Electric Vehicle." Issued November 26, 2002; Continuation in Part, June 26, 2003.

Palumbo, Anthony, Major, Jeff

"Solar Ice Method to Utilize Photovoltaic Energy to Power Motor-Driven Equipment."
 Provisional Patent, April 28, 2003

Rodgers, M.A.J.

"Method of Treatment of Pigmented Cancer Cells Utilizing Photodynamic therapies."
 Issued November 12, 1998; Canada & Europe, 2002



Research Awards:



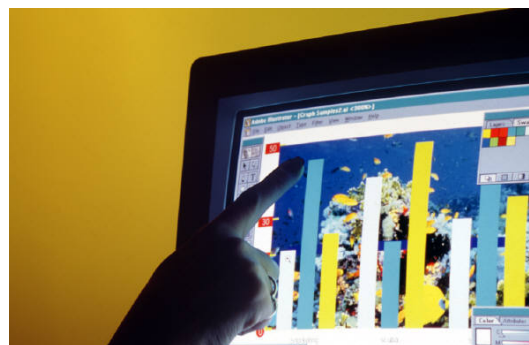
SPOTLIGHT ON RESEARCH AND CREATIVE WORKS

Rebecca Green (School of Art) Fulbright Hayes Award (US Dept. of ED) and a Fulbright Scholar award to study the ancestral and contemporary arts of Madagascar.

Matt Donahue (Popular Culture) and Marlene Harris-Taylor (WBGU) received Ohio Humanities Council funding to produce the documentary *The Hines Farm Blues Club*.

Larissa Szporluk (Creative Writing, English) received an NEA fellowship, the fourth out of four Creative Writing faculty to receive the award in three years.

Bob Midden (Chapman Learning Community), Lena Ballone (Teaching & Learning), and Steve Van Hook (Physics & Astronomy) received a grant under the NSF Graduate Teaching Fellows in K-12 Education program.



Eithne Luibheid (Ethnic Studies) was awarded a grant from the Wenner-Gren Foundation to support her project "Babies of Convenience? African Asylum Seekers and Childbearing in Ireland"

Douglas Neckers (Center for Photochemical Sciences) received one of the State's initial Wright Capital awards to establish the Photopolymerization and Photoinstrumentation Laboratory at BGSU.

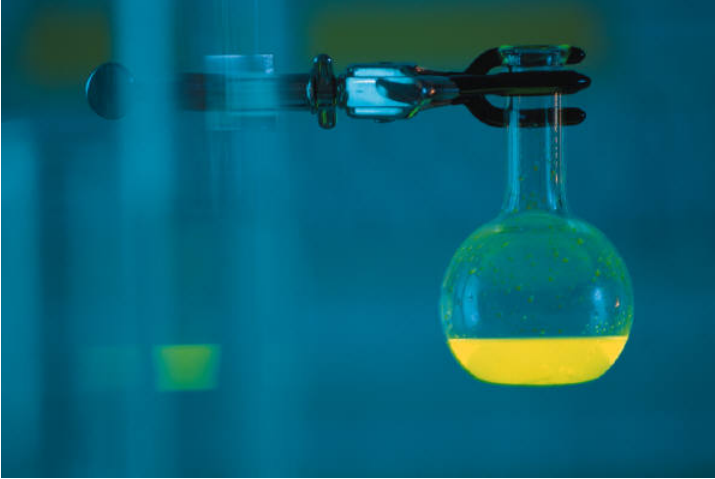
Ronny Woodruff (Biology) continued his research on "Effects of Gravitational Force, Vibration, and Long-term Space Flight on Mutation and Development Stability in *Drosophila*" with support from NASA and the University of Oklahoma.

Pavel Anzenbacher (Chemistry) NSF, "NER: Towards Self-Assembled Metallodendrimers for Multi-Anion Sensing."

Scott Martin (History) Fremont City Schools/US Dept. of ED, "History Links: A Partnership to Teach American History."

Susan Brown (Sociology) NICHD, "Children's Developmental Outcomes in Cohabiting Unions."

Ron Scherer (Communication Disorders), G. Comer Duncan & Lewis Fulcher (Physics & Astronomy), NIDCD, "Aerodynamic and Acoustic Models of Phonation."



Patricia Kubow (EDFI) and John Fischer (Teaching & Learning), US Dept. of State, "Education for Democracy: Strengthening Civic Education Through Curriculum Development and Cultural Exchange in Kenya, South Africa and the U.S."

Alan Atalah (Technology Systems), various organizations, "The Effect of Pipe Bursting on Nearby Utilities, Structures, and Pavement in Rock Conditions."