

JOURNALISM

Major

Students majoring in journalism should follow the curriculum outlined on pages 100-101.

Minor

First Year—Journalism 103, 104
 Second Year—Journalism 206 (one hour), 211, 212
 Third and Fourth Years—Journalism 301, 302; two hours from 306, 461, 462; Electives in Journalism

LATIN

Major

First Year—Latin 101, 102	Latin 201, 202, 203, 204
Second Year—Latin 201, 202, 203, 204	Latin 301, 302
Third Year—Latin 301, 302, 312	Latin 312
Fourth Year—Latin 401, 402	Latin 400, 401, 402

Minor

First Year—Latin 101, 102	Latin 201, 202, 203, 204
Second Year—Latin 201, 202, 203, 204	Latin 301, 302
Third Year—Latin 301, 302	Latin 312
Fourth Year—Latin 312	Elective in Latin

Students with two years of Latin in high school follow the sequence given in the first column, and those with four years follow that given in the second column.

MATHEMATICS

Major

First Year—Mathematics 101, 102, 103 or 105, 104, or equivalent
 Second Year—Mathematics 201, 202
 Third and Fourth Years—Mathematics 409, 410; Electives in Mathematics

Minor

First Year—Mathematics 101, 102, 103 or 105, 104, or equivalent
 Second Year—Mathematics 201, 202

MUSIC

Major

First Year—Music 101, 102, 103, 104, and applied music
 Second Year—Music 205, 206, and applied music
 Third Year—Music 303, 304, 305, 306, and applied music
 Fourth Year—Music 307, 315, 318, 319, and applied music

Minor

First Year—Music 101, 102, 103, 104, and applied music
 Second Year—Music 205, 206, and applied music
 Third Year—Music 303, 304, 305, 306, and applied music
 Fourth Year—Electives in music and applied music

Courses 101 and 103 must be taken concurrently. Also 102 and 104. Eight hours of applied music are required as a minimum for both the major and minor, and should be started the first semester of the first year. See note under Applied Music, Description of Courses, concerning special fees for courses in applied music.

PHILOSOPHY

Major

Second Year—Philosophy 201, and 202 or 204
 Third Year—Philosophy 321, 322; Electives in Philosophy
 Fourth Year—Electives in Philosophy

Minor

Second Year—Philosophy 201
 Third and Fourth Years—Philosophy 321, 322; Electives in Philosophy

PHYSICS

Major

Second Year—Physics 201, 202
 Third Year—8-12 hours chosen from 300-level courses in Physics
 Fourth Year—Physics 401, 413, and sufficient hours chosen from 300- or 400-level courses to complete a minimum of 32 hours in Physics

Minor

Second Year—Physics 201, 202
 Third and Fourth Years—12 hours elective chosen from 300- or 400-level courses in Physics

Students majoring or minoring in Physics must take Chemistry 101, 102; Engineering Drawing 101, 102; and Mathematics 101, 102, 103 or 105, 104 in the first year; and Mathematics 201, 202 in the second year.

POLITICAL SCIENCE

Major or Minor

Second Year—Political Science 201, 202, 203, 204
 Third and Fourth Years—Electives in Political Science

PSYCHOLOGY

Major

First Year—Psychology 101, 102
 Second Year—Psychology 203, 204; Electives in Psychology
 Third Year—Psychology 307, 308; Electives in Psychology
 Fourth Year—Electives in Psychology

Minor

First Year—Psychology 101, 102
 Second Year—Psychology 203, 204
 Third and Fourth Years—Psychology 307; Electives in Psychology
 Electives should be selected with the advice of the chairman of the department and in accordance with the student's background and objective.

SOCIOLOGY

Major

Second Year—Sociology 201, 203
 Third Year—Sociology 301; Electives in Sociology
 Fourth Year—Electives in Sociology

Music

Professor McEwen (Chairman); Associate Professor Kennedy; Assistant Professors Durrance, Fauley, Jensen; Miss Kitt, Mr. Zuelzke; Mrs. Zuelzke.

COURSES IN THEORY, HISTORY, AND APPRECIATION

- *101—SIGHT SINGING AND EAR TRAINING (2) KITT
 Fundamental principles of pitch and rhythm as a basis for solfeggio. Dictation for oral and written response. Four hours a week. (1)
- *102—SIGHT SINGING AND EAR TRAINING (2) KITT
 A continuation of Music 101. Four hours a week. Prerequisite: Music 101. (2)
- *103—NOTATION AND THEORY (2) KITT
 Elementary theory, notation, scales, key signatures, clefs, intervals, triads, and chords of the seventh and ninth. Three hours a week. Course 101 must be taken as parallel. (1)
- *104—MELODY WRITING AND ELEMENTARY FORM (2) KITT
 Tone tendencies. Melodies in the smallest forms from the motive through the three-part song forms. Three hours a week. Prerequisite: Music 103. Course 102 must be taken as parallel. (2)
- *201—SIGHT SINGING AND EAR TRAINING (2) KITT
 Prepared and sight-reading of advanced choral material. Melodic and harmonic dictation. Four hours a week. Prerequisite: Music 102. (1)
- *202—SIGHT SINGING AND EAR TRAINING (2) KITT
 A continuation of Music 201. Four hours a week. Prerequisite: Music 201. (2)
- *205 (206)—HARMONY (2) JENSEN
 Four-part writing, harmonic dictation, keyboard. Prerequisite: Music 104 or equivalent. (1)
- *206—HARMONY (2) JENSEN
 A continuation of Music 205. Prerequisite: Music 205. (2)
- 241—GENERAL MUSIC (2) STAFF
 Fundamental musical skills, reading by syllable, pitch and rhythm dictation, music appreciation, song singing. Four hours a week. (S, 1)
- 242—GENERAL MUSIC (2) STAFF
 A continuation of Music 241. Four hours a week. Prerequisite: Music 241. (S, 2)
- *301—CHORAL LITERATURE (1) DURRANCE
 Reading and study of sacred and secular choral music from 16th to 20th century. Two hours a week. Prerequisite: Music 202. (1)

- *303—HARMONY (2) KENNEDY
 Principal, subordinate, altered and mixed chords. Nonchordal tones, modulation, contrapuntal harmony. Keyboard improvisation. Prerequisite: Music 206. (1)
- *304 (205)—ANALYSIS OF FORM (2) JENSEN
 Analysis of the larger forms of musical composition. Prerequisite: Music 303 or equivalent. (2)
- *305—HISTORY AND APPRECIATION (3) JENSEN
 General course. Readings, reports, recorded music. Survey of all periods. (1)
- *306—HISTORY AND APPRECIATION (3) JENSEN
 A continuation of Music 305. Prerequisite: Music 305. (2)
- *307—CONDUCTING (1) MCEWEN
 Fundamental principles of conducting. Practice in conducting ensemble music. Two hours a week. (1)
- *311—CHORAL LITERATURE (1) DURRANCE
 Reading and study of cantatas, oratorios, and other choral compositions, classical and modern. Two hours a week. Prerequisite: Music 202. (1)
- *315—INSTRUMENTATION (2) MCEWEN
 Scoring for instrumental choirs and ensembles, full orchestra and band. Prerequisite: Music 304. (1)
- *316—COMPOSITION (2) KENNEDY
 Original composition in songs and instrumental forms. Prerequisite: Music 304. (2)
- *317—MUSIC APPRECIATION (2) MCEWEN
 Enjoyment and understanding of music. Hearing, lecture, and participation. Not open to special music students or to those having credit for Music 305 or 306. Laboratory fee, \$2.00. (S, 1, 2)
- *318—SYMPHONIC LITERATURE (1) STAFF
 A hearing course in the larger standard instrumental works. Intended primarily for students taking Public School Music course. Prerequisite: Music 205. Prerequisite or parallel: Music 305 and 306. Laboratory fee, \$2.00. (1)
- *319—SYMPHONIC LITERATURE (1) STAFF
 A continuation of Music 318. Laboratory fee, \$2.00. (2)

COURSES IN MUSIC EDUCATION

- 203—INTRODUCTION TO PUBLIC SCHOOL MUSIC (1) MCEWEN
 Purpose and place of music in the general scheme of education. Two hours a week. (1)
- 204—INTRODUCTION TO PUBLIC SCHOOL MUSIC (1) MCEWEN
 A continuation of Music 203. Prerequisite: Music 203. (2)

3. Not more than four hours of credit earned in this way can be applied toward any degree.

Band	ZUELZKE
Chorus	KENNEDY
Men's Glee Club.....	KENNEDY
Orchestra	ZUELZKE
Treble Clef Club.....	KENNEDY

Orientation

101—ORIENTATION (0)

CONKLIN, WILDER

Personality development and personal adjustment to college environment. The college curriculum, study methods, time and expense budgets, mental and physical hygiene, etiquette, extra-curricular activities, and vocational interests. Required of all freshmen during their first semester. Laboratory fee, 50 cents. (1, 2)

Philosophy

(See *Psychology and Philosophy*)

Physical Education

(See *Health and Physical Education*)

Physics

(See *Chemistry and Physics*)

Political Science

(See *History and Political Science*)

Psychology and Philosophy

Associate Professor Westerhof (Chairman); Professors †Hissong, Zaugg; Miss Dimick, Mr. Young.

*101 (201)—GENERAL PSYCHOLOGY (3)

STAFF

An intensive summary of psychological methods, points of view, principles, concepts, and vocabulary. (S, 1, 2)

*102—GENERAL PSYCHOLOGY (3)

WESTERHOF

A scientific approach to the problems of behavior and experience. Prerequisite: Psychology 101. (S, 2)

*204—GENETIC PSYCHOLOGY (3)

WESTERHOF

A thorough survey and critical examination of animal, child, and adolescent psychology from the development point of view. Prerequisite: Six hours of Psychology. (S, 1)

*205—APPLIED PSYCHOLOGY (3)

A selection of information, methods, and principles for use in everyday situations, for personnel work and for public relations in general. Prerequisite: six hours of Psychology. (S, 2)

† On leave of absence

*300—MENTAL TESTING (2)

Analytical study of the various tests of intelligence, personality, interests, and aptitudes, along with practice in administering tests at the level of the student's interest. Prerequisite: Six hours of psychology and consent of instructor. (2)

*302—ABNORMAL PSYCHOLOGY (3)

WESTERHOF

A careful consideration, for the mature student, of the data and principles which have proved helpful in interpreting the simpler and the more serious deviations from normal behavior. Prerequisite: Nine hours of Psychology. (1)

*305—EXPERIMENTAL PSYCHOLOGY (3)

WESTERHOF

One hour of lecture and four of supervised laboratory experience in the use of apparatus and the handling of data. Designed to foster self-reliance on the part of the student. Prerequisite: Twelve hours of Psychology or six hours of Psychology and the consent of the instructor. Laboratory fee, \$3.00. (2)

*306—SOCIAL PSYCHOLOGY (3)

WESTERHOF

Study of group behavior, more particularly of the individual to the group both in our own and in alien cultures. Prerequisite: Six hours of Psychology and Sociology 201. Not open to students having credit in Sociology 301. (1)

*401—PHYSIOLOGICAL PSYCHOLOGY (3)

A systematic investigation into the nature of the bodily processes which accompany behavior and experience. Prerequisite: Nine hours of Psychology. (1)

*402—COMPARATIVE PSYCHOLOGY (3)

An intensive and mature survey of findings and interpretations based upon experimental studies of animal behavior. Prerequisite: Nine hours of Psychology. (2)

*403—PSYCHOLOGY OF ADJUSTMENT (3)

A study of adjustment and of maladjustment with particular reference to practical human problems and the causative factors involved. Prerequisite: Six hours of Psychology. (S)

*404—PSYCHOLOGY OF PERSONNEL TECHNIQUES (3)

An advanced study of methods for interviewing applicants, for selecting and dealing with workers, for dealing in general with managerial problems. Prerequisite: Psychology 204 or 403. (N)

*501—CONTEMPORARY PSYCHOLOGY (3)

WESTERHOF

A systematic study of current trends in experimental and theoretical psychology. Prerequisite: Twelve hours of Psychology and the consent of the instructor. (N)

*502—SYSTEMATIC PSYCHOLOGY (3)

WESTERHOF

A logical and historical analysis of the trends from which modern psychology has developed. Prerequisite: Twelve hours of Psychology and the consent of the instructor. (N)

COURSES IN PHILOSOPHY

*201—INTRODUCTION TO PHILOSOPHY (3)

WESTERHOF

A serious attempt to distinguish and to make explicit the leading ideas in modern living and thinking. (1)

313—SPECIAL PROBLEMS (1) Choice of various problems in music education. Conducted under supervision.	FAULEY (1)
314—SPECIAL PROBLEMS (1) A continuation of Music 313.	FAULEY (2)
351—TEACHING OF MUSIC (2) Methods in music for students in Elementary Education Curriculum. Four hours a week. Prerequisite: Music 242.	FAULEY (S, 1)
352—METHODS IN MUSIC APPRECIATION (2) The basis of music appreciation. Subject matter and methods. Preparation and teaching typical lessons. Prerequisite: Education 309.	MC EWEN (2)
355—METHODS IN SECONDARY MUSIC (2) Subject matter and materials for music in the junior and senior high schools. Prerequisites: Education 309, 310.	FAULEY (1)
357—METHODS AND MATERIALS IN INSTRUMENTAL MUSIC (2) For elementary and secondary schools.	ZUELZKE (2)

COURSES IN APPLIED MUSIC

FEES—A fee of \$20.00 per semester is charged for each course in Applied Music except Courses 281, 282, 381, and 382. A fee of \$3.00 per semester for use of a piano six hours a week, and a fee of \$5.00 each per semester for brass wind, wood wind, and stringed instruments is charged when provided by the University.

Fees for organ practice are \$10 per semester for 6 hours a week for University students taking organ for credit, 25c per hour of practice for all others.

CREDIT REQUIREMENT—The amount of Applied Music required for students in Public School Music varies from 12 to 18 hours, depending upon ability and previous training. Other students may elect courses in Applied Music with the approval of the chairman of the department and the dean.

INSTRUCTION—The basis for instruction in all Applied Music except Courses 101, 281, 282, 381, 382, and 399 is the half hour individual lesson. Work is graded according to the proficiency and experience of the student, and involves both technical study and standard performance literature. For students of Public School Music, attention is given to such special professional requirements as playing accompaniments and rhythms, and the proper use of the singing voice for teaching in the elementary and secondary schools. All courses except 101, 281, 282, 381, 382, and 399 are offered on demand.

PRACTICE—A minimum of six hours of practice per week is required in piano and other instruments. In voice, three to five hours practice per week is required.

STUDENT RECITALS—Student recitals are held at regular intervals.

*101—PERCUSSION CLASS (½)	ZUELZKE (1, 2)
*161—PIANO (1)	JENSEN, KENNEDY
*162—PIANO (1)	JENSEN, KENNEDY
*261—PIANO (1)	JENSEN, KENNEDY
*262—PIANO (1)	JENSEN, KENNEDY
*361—PIANO (1)	JENSEN, KENNEDY
*362—PIANO (1)	JENSEN, KENNEDY
*363—PIANO (1)	JENSEN, KENNEDY
*364—PIANO (1)	JENSEN, KENNEDY
*171—VOICE (1)	JENSEN, KENNEDY
*172—VOICE (1)	JENSEN, KENNEDY
*271—VOICE (1)	FAULEY, KENNEDY
*272—VOICE (1)	FAULEY, KENNEDY
*371—VOICE (1)	JENSEN, KENNEDY
*372—VOICE (1)	JENSEN, KENNEDY
*373—VOICE (1)	JENSEN, KENNEDY
*374—VOICE (1)	JENSEN, KENNEDY
*283—VIOLIN (1)	KITT
*284—VIOLIN (1)	KITT
*383—VIOLIN (1)	KERSHNER
*384—VIOLIN (1)	KERSHNER
*385—VIOLIN (1)	KERSHNER
*386—VIOLIN (1)	KERSHNER
*281—BRASS WIND (½)	
*282—WOOD WIND (½)	
*287—BRASS OR WOOD WIND (1)	ZUELZKE
*288—BRASS OR WOOD WIND (1)	ZUELZKE
*387—BRASS OR WOOD WIND (1)	
*388—BRASS OR WOOD WIND (1)	
*389—BRASS OR WOOD WIND (1)	ZUELZKE
*290—ORGAN (1)	JENSEN
*291—ORGAN (1)	JENSEN
*390—ORGAN (1)	JENSEN
*391—ORGAN (1)	JENSEN
*392—ORGAN (1)	JENSEN
*393—ORGAN (1)	JENSEN
*381—STRINGED INSTRUMENTS (½)	KERSHNER
*382—STRINGED INSTRUMENTS (½)	KERSHNER
*399—SMALL ENSEMBLES (1)	STAFF

MUSICAL ORGANIZATIONS

The musical organizations listed below are open to all students of the University with the necessary musical ability. Credit is given for participation in these organizations according to the following regulations.

1. No credit is allowed for the first two semesters of participation in any organization.
2. Credit thereafter shall be one half (½) hour per semester for each organization.



FRONT ROW: Shirley Figgins, Norma Burt, Peggy Hitchens, Marion Banning, Lois St. Aubin, Doris Schnetzler, Ruth Wonnell, Virginia McDarr, Agnes Carey, Glenna Abrams, Kathleen Fischer, J. P. Kennedy.

SECOND ROW: Jean Meek, Janice Smith, Fannie Smaltz, Patricia Sanguinetti, Mary Bredbeck, Shirley Paul, Martha Hart, Dorothy Ashbrook, Helen Burdo, Donna Cunningham, Marie Del Sonno, Margaret Harms, Connie Praeger, Dorothy Krill.

THIRD ROW: Bill Connor, Ronald Sprunger, Ronald Bowers, Bill Burt, LeRoy Lugibihl, Harold Bayless, Jim Rook, Jac Smith, Robert Jones, Francis Brown, Guy Smith.

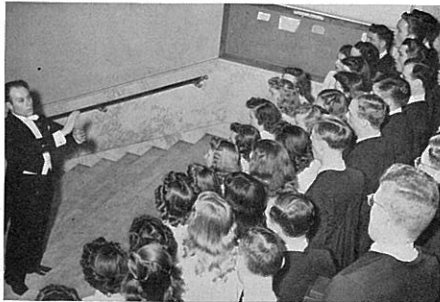
BACK ROW: Phil Lawrence, James Sprunger, Jim Dunn, William Ratcliff, Roy Jackson, Douglas Avery, Kelley Newton, George Bell, John Compton, Richard Ohlemacher, Donald Kinnaman, Raymond Yeager.

A Capella Choir

A Capella Choir combined male and female voices to make a group which was outstanding on campus. They added their talents this year at the Christmas concert and the presentation of Handel's "Messiah". The choir gave many out-of-town concerts during the year, which helped finance their tour in March. Almost every Sunday found this group leaving Bowling Green to give a concert. Although there was a lot of work involved, there were many good times too. The bus rides, the dinners after the concerts, and the pleasure of singing proved it popular with the members.

The highlight of the year was the tour through the southern states. They presented concerts in Ohio, Kentucky, Tennessee, Alabama, Georgia, North Carolina, and West Virginia.

Harold Bayless, president of A Capella Choir, is ably assisted by Kay Fischer, vice-president; Virginia Cryer, secretary; George Bell and Fannie Smaltz, librarians; Janice Smith, publicity; Douglas Avery, stage director; Masaka Ono, treasurer; John Campton, business manager; Donald Kinnaman, assistant business manager; and Jean Meek, assistant director. The choir was directed by Dr. James Paul Kennedy.



Final rehearsal before going South.

a point-average of at least 2.0 in all courses undertaken in residence, and (e) meet all group and major and minor requirements as outlined on pages 74 to 81.

Candidates for graduation must file applications not later than the first week of their final semester. Special blanks for this purpose may be obtained at the Registrar's office.

Group Requirements

A student must complete a definite number of semester hours in each of four groups or fields of study. In so far as possible the group requirements should be completed during the first and second years. The groups and the hours required in each are as follows:

Group I. English and Speech

All students are required to take English 101, 102, and enough additional courses from the fields of composition, literature, and speech to make a total of at least 12 hours.

Group II. Foreign Language

The amount of foreign language required in college depends upon the number of years taken in high school. Candidates for the degree of Bachelor of Arts, who have had no foreign language in high school, are required to take 16 hours in college. Candidates for the degree of Bachelor of Science, with no foreign language in high school must take eight hours. Each year of foreign language taken in high school will reduce the above requirements by four hours. No credit is allowed towards a degree for less than one year of a beginning language.

Group III. Natural Science and Mathematics

Candidates for the A. B. degree are required to take at least 12 hours from the fields of biology, chemistry, geology, physics, and mathematics. Candidates for the B.S. degree must take 60 hours in this group.

Group IV. Social Studies

Twelve hours are required from the fields of economics, geography, history, political science, sociology, philosophy, and psychology. Certain courses in Business Administration may also be used in partial fulfillment of this requirement.

Major And Minor Requirements

Not later than the beginning of the second year each student must select a major and a minor subject. In the subject chosen as a major the student must complete from 28 to 34 hours, and in the subject chosen as a minor from 18 to 26 hours. The total hours for a major or minor varies with departmental requirements, but the combined major and minor credit allowed toward a degree shall not exceed 60 hours except by special permission of the Dean. In arranging courses in the major and minor fields students should consult the heads of the departments concerned.

It is possible for a student to take a major or minor in any of the following departments:

Biology	Journalism
Business Administration	Latin
Chemistry	Mathematics
Economics	Music
English	Physics
French	Political Science
Geography and Geology	Psychology
German	Sociology
History	Spanish
Home Economics	Speech

A student may also take a minor in Art or Health and Physical Education.

Sequences Of Courses For Major And Minor Subjects

ART

Minor

First Year—Art 101, 103
Second Year—Art 201, 202
Third Year—Art 301, 311
Fourth Year—Art 312

BIOLOGY

Major

First Year—Biology 101, 102
Second, Third, and Fourth Years—Elective

Minor

First Year—Biology 101, 102
Second, Third, and Fourth Years—Elective
Electives must be approved by the student's adviser.

MUSIC

Major

First Year—Music 101, 102, 103, 104, and applied music
 Second Year—Music 205, 206, and applied music
 Third Year—Music 303, 304, 305, 306, and applied music
 Fourth Year—Music 307, 315, 318, 319, and applied music

Minor

First Year—Music 101, 102, 103, 104, and applied music
 Second Year—Music 205, 206, and applied music
 Third Year—Music 303, 304, 305, 306, and applied music
 Fourth Year—Elective and applied music

Courses 101 and 103 must be taken concurrently. Also 102 and 104. Eight hours of applied music are required as a minimum for both the major and minor, and should be started the first semester of the first year. See note under Applied Music, Description of Courses, concerning special fees for courses in applied music.

PHYSICS

Major

Second Year—Physics 203, 204, 205, 206
 Third Year—8-12 hours chosen from 300-level courses in Physics
 Fourth Year—Physics 401, 413, and sufficient hours chosen from 300- or 400-level courses to complete 28 to 34 hours in Physics

Minor

Second Year—Physics 203, 204, 205, 206
 Third and Fourth Years—12 hours elective chosen from 300- or 400-level courses in Physics

Students majoring or minoring in Physics must take Chemistry 101, 102; Industrial Arts 101, 102; and Mathematics 101, 102, 103, 104 in the first year; and Mathematics 201, 202 in the second year.

POLITICAL SCIENCE

Major or Minor

Second Year—Political Science 201, 202, 203, 204
 Third and Fourth Years—Electives chosen from Political Science or History 402, 404, 408

PSYCHOLOGY

Major

First Year—Psychology 101, 102
 Second Year—Psychology 204, 205
 Third Year—Psychology 302, 305, 306
 Fourth Year—Psychology 401, 402, 403, 404

Minor

First Year—Psychology 101, 102
 Second Year—Psychology 204, 205
 Third Year—Psychology 302, 305, 306
 Fourth Year—Elective

Students majoring or minoring in Psychology must take Sociology 201, 202 in the second year.

SOCIOLOGY

Major

Second Year—Sociology 201, 203
 Third Year—Sociology 301; Elective, nine hours
 Fourth Year—Elective, 12 hours

Minor

Second Year—Sociology 201, 203
 Third Year—Sociology 301; Elective, six hours
 Fourth Year—Elective, three hours

Electives are to be chosen upon the advice of the department chairman. In special cases where the needs of students require, limited substitutions of courses in related social science departments may be permitted in the major requirements.

Students majoring or minoring in Sociology must take Psychology 101, 102 in the first or second year.

SPANISH

Major

First Year—Spanish 101, 102 Spanish 201, 202
 Second Year—Spanish 201, 202 Spanish 301, 302; or 303, 304
 Third Year—Spanish 301, 302; or 303, 304 Spanish 301, 302; or 303, 304
 Fourth Year—Spanish 305, 306, 307, 308 Spanish 305, 306, 307, 308

Minor

First Year—Spanish 101, 102 Spanish 201, 202
 Second Year—Spanish 201, 202 Spanish 301, 302; or 303, 304
 Third Year—Spanish 301, 302; or 303, 304 Spanish 305, 306, 307, 308
 Fourth Year—Spanish 305, 306; or 307

Students who begin Spanish in college follow the sequence given in the first column, and those with two years of high school follow that given in the second column.

SPEECH

Major or Minor

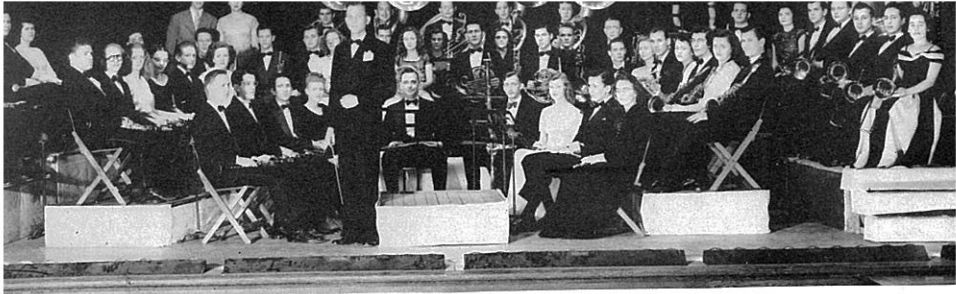
First Year—Speech 102, 103
 Second Year—Speech 104, 201, 202
 Third and Fourth Years—Elective

By the beginning of the second year speech majors must choose a special interest from the fields of Public Speaking, Debate and Discussion, Dramatic Arts, Interpretation, Speech Correction, and Radio. The major may include not more than eight hours chosen from English 301, 302, 312, 313, 413, and 414. Programs of majors should be approved by the head of the department after the first year.

Curricula

The offerings of the College of Liberal Arts are wide enough and sufficiently varied to meet the needs of many different types of students. Those interested in a general education, and those whose professional objectives are not yet determined, should follow the General Curriculum outlined on page 82.

On the following pages programs are suggested and curricula outlined for those preparing to enter a number of professional fields. Students preparing for any of these professions should follow the curriculum outlined. However, these curricula are flexible and may be modified, with the advice and consent of the Dean, to meet the needs of individual students.



FRONT ROW: Glenn Walker, Jack DeLora, Frank Zurlo, Marge Henry, Byron Griffin, George Rohrer, Margaret Baysen, George Langell, Harriet Squire.
SECOND ROW: Jack Kocher, Abe Goldsmith, Dorothy Ashbrook, Marilyn Desenberg, Robert Brunk, Betty Heater, Mary Buxton, Gloria Billet, James Crabtree, John Searle, Walter Scheub, Ruth Berger, Daryl Knepper, Dorothy Krill, Russ Druchenmiller, Charlotte Collins, John Anderson.
THIRD ROW: Gerald Carrier, Jack Warner, William Easterly, Arnold Huner, Carolyn Knowles, Edwin Knepper, Richard Chadwick, Harland Miller, Harland Lehtomaa, Paul Sackett, Shirley Ehlert, Wanda Pitman, William Burt, Jerry Kiger, Tom Evans, Beverly Herringshaw, Nicholas Markes, William Rantala, Printy Arthur, William Champion, Virginia McDarr.
BACK ROW: Burdette Fry, Janette Liebherr, George Snyder, Harold George, Bob Schneider, John Burkey, Bill Neff, Donna Tuttle, Bob Hoskinson, Patty Wiggins, Bob Keagy, Judy Swich, Bonita Phalor.

University Band

The Bowling Green University Band set a new high in performance and popularity in 1947, under the direction of Arthur C. Zuelzke.

During the football season it could be seen practicing long hours to perfect its formations in different numbers. On several occasions the band went with the football team to maintain school spirit when the team played out-of-town games. Their trip to New York was one of the highlights of the year. After perfecting complicated formations for the half of the game which is given at night, the band was unable to appear because of rain and mud. The football performances helped tremendously to keep school spirit at a new high.

The band continued to maintain this spirit throughout the basketball season with their performances during the half and before the game.

In addition to the marching band, approximately sixty members were chosen to appear in a concert band, which gave two concerts during the year. Edwin Knepper, a national winner in a class B coronet contest, was featured soloist at the January concert.



Adept formation at football game.

Administration

Board of Trustees

The Board of Trustees consists of the State Director of Education, *ex officio*, and five others, one appointed each year by the governor of Ohio, for a term of five years.

Members of the Board

JAMES C. DONNEL, II (1947*)	Findlay
E. T. RODGERS (1948*)	Tiffin
ALVA W. BACHMAN (1949*)	Bowling Green
CARL SCHWYN (1950*)	Cygnets
MINOR KERSHNER (1951*)	Liberty Center
CLYDE HISSONG (<i>ex officio</i>)	Columbus

Officers of the Board

E. T. RODGERS	President
ALVA W. BACHMAN	Secretary
MINOR KERSHNER	Treasurer

Administrative Officers

FRANK J. PROUT, B. Litt., Ped.D.	President of the University
†CLYDE HISSONG, Ph.D.	Dean of College of Education
JAMES ROBERT OVERMAN, Ph.D.	Dean of College of Liberal Arts
RALPH G. HARSHMAN, Ph.D.	Dean of College of Business Administration
HERSCHEL LITHERLAND, Ph.D.	Assistant Dean, College of Education and Director of Teacher Education
EMERSON C. SHUCK, Ph.D.	Director of the Graduate School
ARCH B. CONKLIN, A.M.	Dean of Students
AUDREY KENYON WILDER, A.M.	Dean of Women
KENNETH H. MCFALL, A.M.	Director of Guidance
JOHN W. BUNN, A.M.	Registrar
PAUL F. LEEDY, Ph.D.	Librarian
ERVIN J. KREISCHER, B.S. in Ed.	Business Manager
WINSHIP HAY BROWN, M.D.	University Physician
PAUL W. JONES, A.B.	Director of News Bureau
I. WILLIAM MILLER, M.A.	Director of the Bureaus of Appointments and Alumni Relations

* Term expires
† On leave of absence

Faculty

FRANK J. PROUT	President, (April, 1939)* B.Litt., Ohio Wesleyan University; Ped.D., Ohio University, Ohio Wesleyan University.
GERALD ACKER	Instructor in Biology (1946) A.B., Allegheny College; M.S., University of Oklahoma.
WILLIAM DON ALEXANDER	Instructor in Music (1946) B.S.M., Mount Union College; M.S., North Texas State College.
WARREN S. ALLEN	Assistant Professor of Music (1946) B. Music, Southwestern College.
†HANNS K. ANDERS	Instructor in Chemistry (1942) A.B., Oberlin College.
HAROLD ANDERSON	Associate Professor of Health and Physical Education (1942) A.B., Otterbein College; A.M., University of Michigan.
IRIS E. ANDREWS	Assistant Professor of Physical Education (1945) B.S., Battle Creek College; M.A., University of Michigan.
ROBERT T. AUSTIN	Instructor in Industrial Arts (1946) B.Ed., University of Toledo.
FLORENCE BAIRD	Assistant Professor of Foreign Language (1925) B.S. in Education, Bowling Green State University; A.B., A.M., Ohio State University.
LOIS E. BARR	Instructor in English (1946) B.A., College of Wooster; M.A., Tufts College.
CHARLES ALDEN BARRELL	Associate Professor of Political Science (1940) A.B., Hampden Sydney College; A.M., University of Virginia; Ph.D., Ohio State University.
A. B. BAYNARD	Assistant Professor of Foreign Language (1946) B.A., University of Scranton; A.M., Columbia University.
F. EUGENE BEATTY	Director of Services (1941) B.S. in Business Administration, Bowling Green State University.
FLORENCE E. BENDER	Instructor in Home Economics (1944) A.B., Goshen College; M.S., Purdue University.
CLARE H. BENNETT	Assistant Professor of Biology (1944) A.B., Western Michigan College; M.A., University of Michigan; Ph.D., Michigan State College.
LAWRENCE J. BENNINGER	Assistant Professor of Business Administration (1945) B.A., M.A., State University of Iowa.
DONALD W. BOWMAN	Associate Professor of Physics (1943) A.B., Mount Union College; A.M., Ph.D., Ohio State University.
WINSHIP HAY BROWN	University Physician (1940) A.B., Denison University; M.D., Starling Loving Medical School, Ohio State University.

* The date in parentheses is the date of first appointment to a position at Bowling Green State University.
† On leave of absence

BOWLING GREEN STATE UNIVERSITY

- HENRY W. F. BRUNS..... *Instructor in Mathematics* (1946)
B.A., Defiance College; M.A., Bowling Green State University.
- JOHN W. BUNN..... *Registrar* (1939)
A.B., DePauw University; M.A., Columbia University.
- JAY CHERRY..... *Instructor in Speech* (1946)
A.B., Ohio Wesleyan University; M.A., Western Reserve University.
- MAXINE CLARK..... *Instructor in Home Economics* (1946)
B.S. in Home Economics, Kansas State College.
- ARCH B. CONKLIN..... *Dean of Students* (1939)
B.S., Wooster College; M.A., Columbia University.
- GILBERT W. COOKE..... *Associate Professor of Business Administration* (1937)
B.S., A.M., University of Minnesota; Ph.D., University of Wisconsin.
- SAMUEL M. COOPER..... *Instructor in Physical Education* (1946)
A.B., Oberlin College.
- W. F. CORNELL..... *Assistant Professor of Mathematics* (1943)
B.S. in Education, Bowling Green State University; A.M., Ohio State University.
- DANIEL J. CROWLEY..... *Professor of Graphic Arts* (1919)
B.S., Columbia University; Ph.M., University of Wisconsin.
- FREDERICK CUNLIFFE..... *Instructor in Biology* (1946)
B.S., Michigan State Normal College; M.S., University of Michigan; M.S., University of New Hampshire.
- JESSE J. CURRIER..... *Associate Professor of Journalism* (1940)
A.B., Ohio Wesleyan University; A.M., Ohio State University.
- JOHN R. DAVIDSON..... *Instructor in Business Administration* (1946)
B.S. in Education, Bowling Green State University; M.S. in Retailing, New York University.
- E. EUGENE DICKERMAN..... *Associate Professor of Biology* (1936)
Director of the River Laboratory
A.B., Grand Island College; A.M., Ph.D., Northwestern University.
- GRACE DURRIN..... *Associate Professor of English* (1925)
A.B., Hope College; A.M., University of Michigan.
- EARLE EDWARD EMME..... *Associate Professor of Psychology* (1946)
A.B., Northwestern University; A.M., Columbia University; Ph.D., University of Chicago.
- GERTRUDE EPPLER..... *Associate Professor of Health and Physical Education* (1941)
B.S., Michigan State Normal College; M.S., University of Michigan.
- LEON E. FAULEY..... *Assistant Professor of Music* (1930)
A.B., Wichita University; B.M., Kansas University; A.M., Columbia University.
- CARL F. FERNER..... *Instructor in Journalism* (1946)
B.A., University of Michigan.
- BARTON G. FETTERMAN..... *Instructor in Mathematics* (1946)
B.S. in Education, M.A., Ohio State University.
- LYLE REXFORD FLETCHER..... *Assistant Professor of Geography and Geology* (1946)
A.B., Ohio University; M.A., Ohio State University.
- JOHN E. GEE..... *Assistant Professor of Education* (1946)
A.B., Tusculum College; M.Ed., D.Ed., University of Pittsburgh.
- MARTHA M. GESLING..... *Assistant Professor of Education* (1946)
A.B., Ohio Northern University; A.M., Ohio State University.
- ANNA N. GRYTING..... *Assistant Professor of Mathematics* (1927)
B.S., University of Minnesota; A. M., Columbia University.
- MAXINE McALLISTER HALL..... *Instructor in Business Education* (1946)
B.A., Capital University; M.A., Ohio State University.

FACULTY

- W. HEINLEN HALL..... *Associate Professor of Chemistry* (1936)
A.B., Muskingum College; Ph.D., Ohio State University.
- A. J. HAMMER..... *Assistant Professor of Chemistry* (1946)
B.S., Parsons College; M.S., Ph.D., Iowa State College.
- HAROLD T. HAMRE..... *Instructor in Biology* (1946)
B.S., M.S., University of Wisconsin.
- RALPH G. HARSHMAN..... *Professor of Business Administration* (1936)
Dean of the College of Business Administration
B.S. in Education, Ohio Northern University; A.M., Ph.D., Ohio State University.
- EVELYN C. HART..... *Instructor in English* (1944)
B.S. in Education, M.A., Bowling Green State University.
- LLOYD A. HELMS..... *Professor of Economics* (1938)
A.B., DePauw University; A.M., Ph.D., University of Illinois.
- HELEN W. HENDERSON..... *Associate Professor of Home Economics* (1925)
Ph.B., University of Chicago; A.M., Columbia University.
- LAURA E. HESTON..... *Professor of Home Economics* (1918)
B.S., Ohio State University; M.S., University of Chicago.
- †CLYDE HISSONG..... *Professor of Education* (1923)
Dean of the College of Education
B.S. in Education, Miami University; A.M., Columbia University; Ph.D., Ohio State University.
- WAYNE SHAFER HUFFMAN..... *Assistant Professor of History* (1938)
A.B., Findlay College; A.M., University of Michigan.
- R. LYNN HUTCHISON..... *Assistant Professor of Biology* (1946)
B.A., College of Wooster; M.A., Ohio University; Ph.D., Northwestern University.
- MYRTLE JENSEN..... *Assistant Professor of Music* (1938)
B. Music, St. Olaf College; B. Music, American Conservatory; M. Music, Eastman School of Music of the University of Rochester.
- ROBERT E. JEWETT..... *Assistant Professor of Education* (1946)
B.S. in Education, M.A., Ohio State University.
- MADGE E. JOHNSON..... *Assistant Professor of Home Economics* (1937)
B.S., University of Arkansas; A.M., Columbia University.
- PAUL W. JONES..... *Instructor in Journalism* (1941)
Director of News Bureau
A.B., Ohio Wesleyan University.
- WILLIAM C. JORDAN..... *Director of Extension Service* (1925)
B.S. in Education, A.M., Ohio State University.
- HOWARD H. KANE..... *Assistant Professor of Business Administration* (1946)
B.S. in Commerce and Finance, University of Dayton; B.S. in Education, M.A., Ohio State University.
- LOWRY B. KARNES..... *Assistant Professor of Geography* (1945)
A.B., Muskingum College; M.A., Ph.D., Ohio State University.
- EVELYN KENESSON..... *Assistant Professor of Speech* (1945)
B.A., Texas University; M.A., Ph.D., University of Michigan.
- JAMES PAUL KENNEDY..... *Associate Professor of Music* (1936)
Director of Choral Activities
A.B., William Penn College; B.M.Ed., M.M., Northwestern University; Ph.D., University of Iowa.
- ANNE R. KING..... *Instructor in English* (1946)
B.A., Hunter College; M.A., Cornell University.

† On leave of absence

- ARLENE SPARROW KIRKLAND.....*Instructor in Business Education* (1944)
B.S. in Education, Bowling Green State University.
- RALPH J. KLEIN.....*Instructor in Speech* (1946)
B.S. in Education, Bowling Green State University; M.A., Western Reserve University.
- EDWIN G. KNEPPER.....*Professor of Business Education* (1923)
A.B., B.S. in Education, Ohio State University; Ed.D., Harvard University.
- DAVID M. KRABILL.....*Associate Professor of Mathematics* (1946)
B.A., College of Wooster; M.A., Ph.D., Ohio State University.
- ERVIN J. KREISCHER.....*Business Manager* (1937)
B.S. in Education, Bowling Green State University.
- GEORGE N. KUMMER.....*Assistant Professor of English* (1946)
B.S., Ohio State University; M.A., Harvard University.
- PAUL F. LEEDY.....*Professor of English* (1938)
Librarian
A.B., A.B.L.S., A.M., Ph.D., University of Michigan.
- LOWELL P. LELAND.....*Assistant Professor of English* (1946)
B.A., Colby College; M.A., University of Maine; Ph.D., Ohio State University.
- HERSCHEL LITHELAND.....*Professor of Education* (1941)
Assistant Dean, College of Education
Director of Teacher Education
A.B., Greenville College; A.M., University of South Dakota; Ph.D., University of Cincinnati.
- ROBERT A. LITZINGER.....*Assistant Professor of Foreign Language* (1946)
B.S. in Education, M.A., Ohio State University.
- SAMUEL HARMAN LOWRIE.....*Professor of Sociology* (January, 1939)
A.B., Rice Institute; A.M., Ph.D., Columbia University.
- REA McCAIN.....*Professor of English* (1914)
A.B., National Normal University; A.B., Antioch College; A.M., Columbia University; Ph.D., New York University.
- ADELINE E. McCLELLAND.....*Assistant Professor of Speech* (1946)
B.S., Slippery Rock State Teachers College; M.Ed., Pennsylvania State College.
- ROBERT A. McCOY.....*Instructor in Industrial Arts* (1946)
B.S. in Education, Bowling Green State University; M.Ed., University of Colorado.
- MERRILL C. McEWEN.....*Professor of Music* (1921)
B.S. in Education, Columbia University; A.M., Ohio State University.
- KENNETH H. McFALL.....*Director of Guidance* (1943)
B.S., Mount Union College; M.A., Western Reserve University.
- ROBERT E. MCKAY.....*Assistant Professor of Physics* (1944)
B.A., M.S., Ohio State University.
- LEWIS F. MANHART.....*Assistant Professor of Business Administration* (1937)
B.S. in Education, Bowling Green State University; A.M., Ohio State University.
- PATRICIA F. MANN.....*Instructor in Speech* (1946)
B.A., Baldwin-Wallace College; M.A., Western Reserve University.
- FRED E. MARSH.....*Assistant Professor of Physical Education* (1940)
B.S. in Education, Bowling Green State University; A.M., Columbia University.
- CLARE S. MARTIN.....*Professor of Chemistry* (1923)
B.S., A.M., Ph.D., Ohio State University.
- HARRY R. MATHIAS.....*Assistant Professor of Mathematics* (1931)
A.B., Indiana Central College; A.M., Indiana University.
- WILBER MATHIAS.....*Instructor in Mathematics* (1946)
B.S., Adrian College; M.A., University of Pittsburgh.

- SAMUEL M. MAYFIELD.....*Associate Professor of Geography and Geology* (1936)
B.S., A.B., Berea College; Ph.D., University of Chicago.
- CORNELIA COLTON MENGES.....*Assistant Professor of Art* (1943)
B.S. in Education, A.M., Ohio State University.
- FRANK G. MESERVE.....*Assistant Professor of Biology* (1945)
A.B., University of Nebraska; M.A., Northwestern University; Ph.D., University of Nebraska.
- I. WILLIAM MILLER.....*Instructor in History* (1946)
Director of the Bureau of Appointments and Alumni Relations
B.S. in Education, M.A., Bowling Green State University.
- MAURICE L. MILTENBERGER.....*Assistant Professor of Business Administration* (1946)
B.S., Miami University; M.S., University of Michigan.
- MHYRA S. MINNIS.....*Instructor in Sociology* (1946)
A.B., M.A., Oberlin College.
- O. D. MONTGOMERY.....*Instructor in Business Education* (1946)
B.S. in Education, Ohio University.
- EDWIN L. MOSELEY.....*Professor Emeritus of Biology* (1914)
Curator of University Museum
A.M., University of Michigan; L.H.D., Bowling Green State University.
- DOROTHY EVELYN MOULTON.....*Instructor in English* (1946)
A.B., Randolph-Macon Woman's College; M.A., University of Pittsburgh.
- GEORGE MUELLICH.....*Instructor in Physical Education* (1942)
B.S. in Education, Michigan State Normal College.
- HERBERT E. MUNTZ.....*Instructor in English* (1945)
B.A., M.A., Ohio State University
- PAUL F. MUSE.....*Associate Professor of Business Education* (1939)
B.S. in Education, Ohio University; M.A., Ph.D., Ohio State University.
- LEROY O. MYERS.....*Assistant Professor of Geography* (1946)
B.A., Pennsylvania State College; M.A., University of Michigan
- VIRGINIA MYERS.....*Assistant Professor of English* (1946)
B.A., College of Wooster; M.A., Radcliffe College; M. Litt., University of Cambridge.
- MAURICE NEWBURGER.....*Psychologist, The State Bureau of Juvenile Research* (1942)
A.B., A.M., Ph.D., University of Cincinnati.
- CAROLINE NIELSEN.....*Professor of Foreign Language* (1918)
A.B., A.M., University of Nebraska.
- BERNARD FREDERICK NORDMANN.....*Associate Professor of History* (1929)
A.B., Leland Stanford University; A.M., Ph.D., University of Illinois.
- HAROLD B. OBEE.....*Instructor in Speech* (1946)
A.B., Adrian College; M.A., Ohio State University.
- FRANK CHAPPELL OGG.....*Professor of Mathematics* (1931)
A.B., University of New Mexico; A.M., Ph.D., University of Illinois.
- NELLIE A. OGLE.....*Associate Professor of Business Education* (1926)
A.B., University of Iowa; A.M., University of Chicago.
- MASAKO ONO.....*Instructor in Music* (1946)
B.M., University of Michigan.
- CHARLES H. OTIS.....*Professor of Biology* (1930)
A.B., Ph.D., University of Michigan.
- JAMES ROBERT OVERMAN.....*Professor of Mathematics* (1914)
Dean of the College of Liberal Arts
A.B., Indiana University; A.M., Columbia University; Ph.D., University of Michigan.

- CLYDE C. PARKER.....Assistant Professor of Journalism (1945)
A.B., B.J., University of Missouri; M.A., Colorado State College of Education.
- BERYL MARGARET PARRISH.....Instructor in English (1946)
B.S. in Education, M.A., Ohio State University.
- ALMA J. PAYNE.....Instructor in English (1946)
B.A., Wooster College; M.A., Western Reserve University.
- CLAUDE D. PERRY.....Registrar Emeritus (1923)
A.B., Ohio Wesleyan University.
- BENJAMIN L. PIERCE.....Professor of Business Administration (1939)
A.B., Oberlin College; A.M., Columbia University; J.D., University of Michigan.
- WANDA PITMAN.....Instructor in Music (1946)
B.M., B.M.Ed., Oberlin Conservatory of Music.
- GROVER C. PLATT.....Assistant Professor of History (1946)
B.A., Iowa University; M.A., Tufts College; Ph.D., Iowa University.
- EARL CLAIR POWELL.....Associate Professor of Industrial Arts (1923)
B.S., A.M., Ohio State University.
- NORMAN A. PREBLE.....Assistant Professor of Biology (1945)
A.B., University of Kansas; M.Sc., Ph.D., Ohio State University.
- MARTHA E. PURDOM.....Assistant Professor of Home Economics (1944)
B.S., Ohio State University; M.S., University of California at Los Angeles.
- JOHN K. RANEY.....Assistant Professor of Industrial Arts (1939)
B. Arch., Ohio State University.
- CECIL L. REW.....Associate Professor of Foreign Language (1935)
Ph.B., University of Chicago; A.M., Ph.D., University of Illinois.
- ALLAN SAWDY.....Instructor in Physical Education (1944)
B.S., Michigan State Normal College.
- ALICE SCHOCKE.....Instructor in Home Economics (1946)
B.S. in Education, Miami University.
- JOHN SCHWARZ.....Professor of History (1923)
A.B., Miami University; A.M., University of Chicago.
- CAROLYN SHAW.....Associate Professor of Physical Education (1923)
A.B., Smith College; B.S., Simmons College; A.M., Columbia University.
- EMERSON C. SHUCK.....Associate Professor of English (1943)
Director of the Graduate School
B.S., Otterbein College; A.M., Ohio State University; Ph.D., University of Wisconsin.
- BERTIL G. F. SIMA.....Assistant Professor of Foreign Language (1946)
B.A., Stockholm Nya Elementar; M.A., Ph.D., Leipzig University.
- WILLARD E. SINGER.....Associate Professor of Physics (1927)
B.S., Capital University; B.E.E., A.M., Ohio State University.
- †ELDEN T. SMITH.....Associate Professor of Speech (1940)
Director of the University Theatre
A.B., Ohio Wesleyan University; A.M., Western Reserve University.
- JANE SHOEMAKER-SMITH.....Instructor in Physical Education (1944)
B.S., Michigan State Normal College; M.A., Bowling Green State University.
- HAROLD GLENDON STEELE.....Instructor in English (1946)
B.A., Northwestern University; M.A., Ohio State University.
- WALDO E. STEIDTMANN.....Associate Professor of Biology (1936)
A.B., University of Wisconsin; M.S., Ph.D., University of Michigan.
- WARREN E. STELLER.....Associate Professor of Physical Education (1924)
A.B., Oberlin College; A.M., Columbia University.

† On leave of absence

- JOHN W. STOCKTON.....Instructor in History (1946)
B.S., A.M., Miami University.
- HUBERT P. STONE.....Instructor in Library Science and Reference Librarian (1946)
A.B., Ohio Northern University; B.S. in L.S., Western Reserve University; A.M., Oberlin College.
- SIDNEY STONE.....Assistant Professor of Speech (1944)
B.A., M.A., Ohio Wesleyan University.
- CHARLES STONEKING.....Instructor in Industrial Arts (1946)
A.B., Denison University; M.Ed., University of Cincinnati.
- C. GLENN SWANSON.....Associate Professor of Sociology (1934)
A.B., A.M., Colorado Teachers College; Ph.D., New York University.
- JACQUELINE E. TIMM.....Assistant Professor of Political Science (1946)
B.A., M.A., Ph.D., University of Texas.
- JAMES ALBERT TRACY.....Assistant Professor of Speech (1946)
B.A., State University of Iowa; M.A., University of Denver.
- BETTY JEAN TROEGER.....Instructor in Music (1946)
B.S. in Education, Bowling Green State University; M.M., Northwestern University.
- FREDERICK J. TROST.....Assistant Professor of Sociology (1946)
Ph.B., University of Wisconsin; M.A., Northwestern University.
- TOM HOLLINGSWORTH TUTTLE.....Associate Professor of Philosophy (1946)
B.A., M.A., University of Texas; Ph.D., University of Southern California.
- LELAND S. VAN SCOYOC.....Assistant Professor of Economics (1946)
B.S., M.S., Kansas State College.
- HARMON VOSKUIL.....Assistant Professor of Business Administration (1946)
B.A., Hope College; M.A., University of Minnesota.
- FREDERICK G. WALSH.....Assistant Professor of Speech (1945)
B.S., M.S., North Carolina State College; M.A., University of North Carolina.
- WILLARD F. WANKELMAN.....Assistant Professor of Art (1946)
B.S. in Education, M.A., Ohio State University.
- J. ELLIOTT WEBER.....Associate Professor of Chemistry (1937)
A.B., A.M., Ph.D., Indiana University.
- ANTHONY C. WESTERHOF.....Associate Professor of Psychology (1944)
A.B., Calvin College; M.A., Ph.D., Duke University.
- HOWARD R. WHITE.....Associate Professor of Psychology (1946)
B.A., M.A., University of Buffalo; Ph.D., State University of Iowa.
- ROBERT H. WHITTAKER.....Assistant Professor of Physical Education (1941)
B.S., Miami University; A.M., Bowling Green State University.
- E. ELOISE WHITWER.....Instructor in Biology (1946)
A.B., Grand Island College; M.A., University of Nebraska.
- AUDREY KENYON WILDER.....Dean of Women (1941)
A.B., Albion College; A.M., Columbia University.
- ALLEN V. WILEY.....Instructor in Economics (1946)
A.B., M.A., Lafayette College.
- VIOLA WILLEKE.....Instructor in English (1946)
B.S. in Education, Ohio Northern University; M.A., University of Michigan.
- FLORENCE J. WILLIAMSON.....Professor of Education (1926)
A.B., Cedarville College; A.M., Ph.D., Ohio State University.
- E. HARRY WOHLER.....Instructor in Mathematics (1946)
A.B., Wittenberg College; M.A., University of Toledo.
- HADLEY YATES.....Assistant Professor of Music (1946)
B.M., M.M., Northwestern University.

MARGARET YOCOM.....Assistant Librarian (1929)
 A.B., Oberlin College; B.S. in L.S., Western Reserve University.

CHARLES W. YOUNG.....Assistant Professor of Education (1945)
 B.A., Ohio Wesleyan University; M.A., Ohio State University.

WALTER A. ZAUGG.....Professor of Education (1923)
 Executive Chairman, College of Education
 A.B., Valparaiso University; A.B., Indiana University; A.M., Columbia University;
 Ph.D., New York University.

ARTHUR ZUELZKE.....Instructor in Music (1944)
 B.S., University of Cincinnati.

Temporary and Part-Time Appointments

JAMES W. BALTZ, A.B., B.S. in Ed.....Foreign Language

ELMER L. BOYLES, A.B., M.A.....Mathematics

K. ELLEN CROWLEY, B.A.....English

RACHEL T. D'ALMAINE, A.B., M.A.....Biology

EMILY R. DERRER.....Music

MABEL E. DRENNAN, B.A., M.A.....Mathematics

JOSEPH B. FINLAY, A.B.....Chemistry

GEORGE M. HANKEY, B.C.S., B.S.....Business Education

MARCUS A. HANNA, B.A., B.S. in Ed.....Chemistry

MARJORIE KREISCHER, B.S. in Ed., M.A.....English

GERALD W. McLAUGHLIN.....Music

AUDREY E. MEISTER, B.S.....Chemistry

PAUL K. MEYERS, B.S. in Ed.....Chemistry

ROSALYN R. NEWCOMER, B.S. in Ed.....Physical Education

FLORENCE S. OGG, B.S. in Ed., M.A.....Mathematics

CLYDE W. RUTHERFORD, B.S. in Ed.....Mathematics

ROSALIE RUTHERFORD, B.S. in Ed.....Mathematics

HOWARD W. SAMMETINGER, B.S.....Chemistry

DORIS D. STONE, B.S. in Ed.....Psychology

RANGHILD N. STONE, A.B., A.M.....English

FLOYD D. STROW, B.S. in Ed., M.A.....Mathematics

HAZEL H. SWANSON, B.A.....English

MARGARET G. WESTERHOF, A.B., M.A.....English

CLARA JEAN WHITMAN, B.S. in Ed.....Physical Education

Graduate Assistants

ROBERT M. CROWELL, B.A.....Biology

VIRGINIA POE DAILEY, B.A.....Graduate School

SUZANNE FORSYTH, B.A.....Mathematics

MARY JANE HUARD, B.S. in Ed.....Speech

JOHN J. JOSEPH, B.S.....Biology

DOROTHY M. KERN, B.S. in Ed.....Speech

DONALD S. LONGWORTH, B.S. in Ed.....Sociology

GRACE L. STEINER, B.S. in Ed.....Biology

JEAN YOUNG, B.A.....Speech

University and Affiliated Laboratory Schools

Administrative Officers

HERSCHEL LITHERLAND, A.B., A.M., Ph.D.....Director of Teacher Education

CHARLES W. YOUNG.....Coordinator in Elementary Education (1945)
 B.A., Ohio Wesleyan University; M.A., Ohio State University.

ROBERT E. JEWETT.....Coordinator in Secondary Education (1946)
 B.S., M.A., Ohio State University.

H. L. BOWMAN.....Superintendent of Bowling Green Public Schools (1939)
 B.S., Denison University; A.M., Ohio State University.

University Laboratory School

FLORENCE E. BENDER.....Supervisor, University Nursery School (1944)
 A.B., Goshen College; M.S., Purdue University.

NOBLE SANDRA DOOLY.....Head Teacher, University Nursery School (1946)
 B.S., University of Tennessee.

MAE A. TINDALL.....Supervising Teacher, Junior-Primary (1941)
 B.A., Willamette University; M.A., Columbia University.

ENNA PIGG.....Supervising Teacher, Second Grade (1932)
 B.S., Central Missouri State Teachers College; A. M., University of Chicago.

ELSIE L. LORENZ.....Supervising Teacher, Third Grade (1931)
 B.S. in Supervision, A.M., University of Iowa.

MAUDE DOANE.....Principal and Supervising Teacher, Fourth Grade (1920)
 Ph.B., A.M., University of Chicago.

Ridge Street School

GRACE R. BELL.....Supervising Teacher, First Grade (1941)
 B.S. in Education, M.A., Bowling Green State University.

CORA E. DAY.....Supervising Teacher, Second Grade (1946)
 B.S., Ohio State University.

ALICE MARGARET ROTH.....Supervising Teacher, Third Grade (1921)
 B.S., A.M., Columbia University.

MARVALENE L. DAY.....Principal and Supervising Teacher, Fourth Grade (1931)
 Ph.B., University of Chicago; A.M. in Elementary Education, Columbia University.

VIVIAN CRAUN.....Supervising Teacher, Fifth Grade (1924)
 Ph.B., University of Chicago; A.M., Columbia University.

LENA IRENE MILLS.....Supervising Teacher, Fifth and Sixth Grades (1924)
 B.S., A.M., Columbia University.

RUTH E. VAN DORN.....Supervising Teacher, Sixth Grade (1925)
 Ph.B., University of Chicago; A.M., Columbia University.

Bowling Green Junior High School

ERNEST N. LITTLETON.....Principal (1930)
 A.B., Miami University; A.M., Columbia University.

JOHN LAWRENCE CLARKE.....Supervising Teacher, Biology (1940)
 A.B., Ohio Wesleyan University; M.A., Ohio State University.

CLAYTON R. COOKE.....Supervising Teacher, Physical Education (1934)
 A.B., Marietta College; A.M., Ohio State University.

ELIZABETH D. GELVIN.....Supervising Teacher, English (1930)
 B.S. in Education, A.M., Ohio State University.

MARGUERITE N. HAWVER.....Supervising Teacher, Mathematics (1943)
 A.B., Adrian College; M.A., Ohio State University.



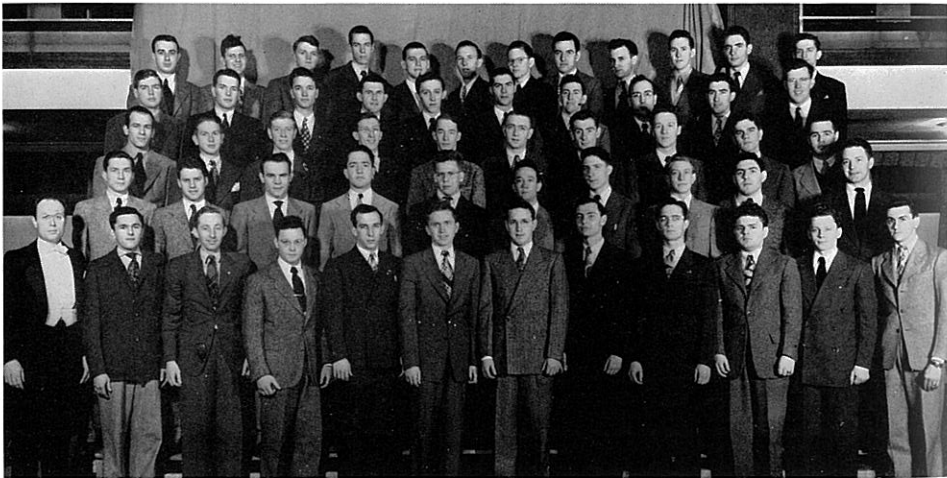
Baritones . . . for Bach or boogie.

Although Treble Clef, an all-girl organization, has been a part of Bowling Green for a number of years, this year brought with it the initial appearance of an all-men vocal group, the Men's Glee Club.

After organization of the vocal group was completed and many hours had been spent in practicing, the members presented their first program in November, when they participated in a local radio broadcast. Men's Glee Club combined with other vocal groups to give the annual Christmas concert, and the men also added their talents to the annual presentation of the "Messiah". The group completed its program of the year by singing in the spring concert.

To promote neighborly relations a tour was organized which took the men into Canada and neighboring states. The trip proved very successful and was the beginning of better things to come.

Men's Glee Club



FRONT ROW: J. P. Kennedy, C. T. Bogusz, Robert Collar, Edward Gensler, Paul Behm, Donald Deters, Don Speck, Bob Adams, William Warren, Jack Kocher, Ned Hugus, Mason Grove.

SECOND ROW: Gene Cupp, William Fischer, Dale Hodge, Carl Thomas, James Crider, Gene Roberts, Wade Shinew, Russell McConnell, Monroe Rappaport, Gordon Mosher.

THIRD ROW: James Miller, Robert Brunk, Fred Way, Don Behm, Paul Meyer, Jerry Kiger, Merritt Searfoss, Richard Chadwick, Vern Nealeigh, Carlton Davenport.

FOURTH ROW: Forrest Warner, Martin Ide, Robert Fellers, Gordon Beck, John Godfrey, Arthur Bunce, John Gillespie, Gerald Robinson, Thomas Powell, Donald Kinnaman.

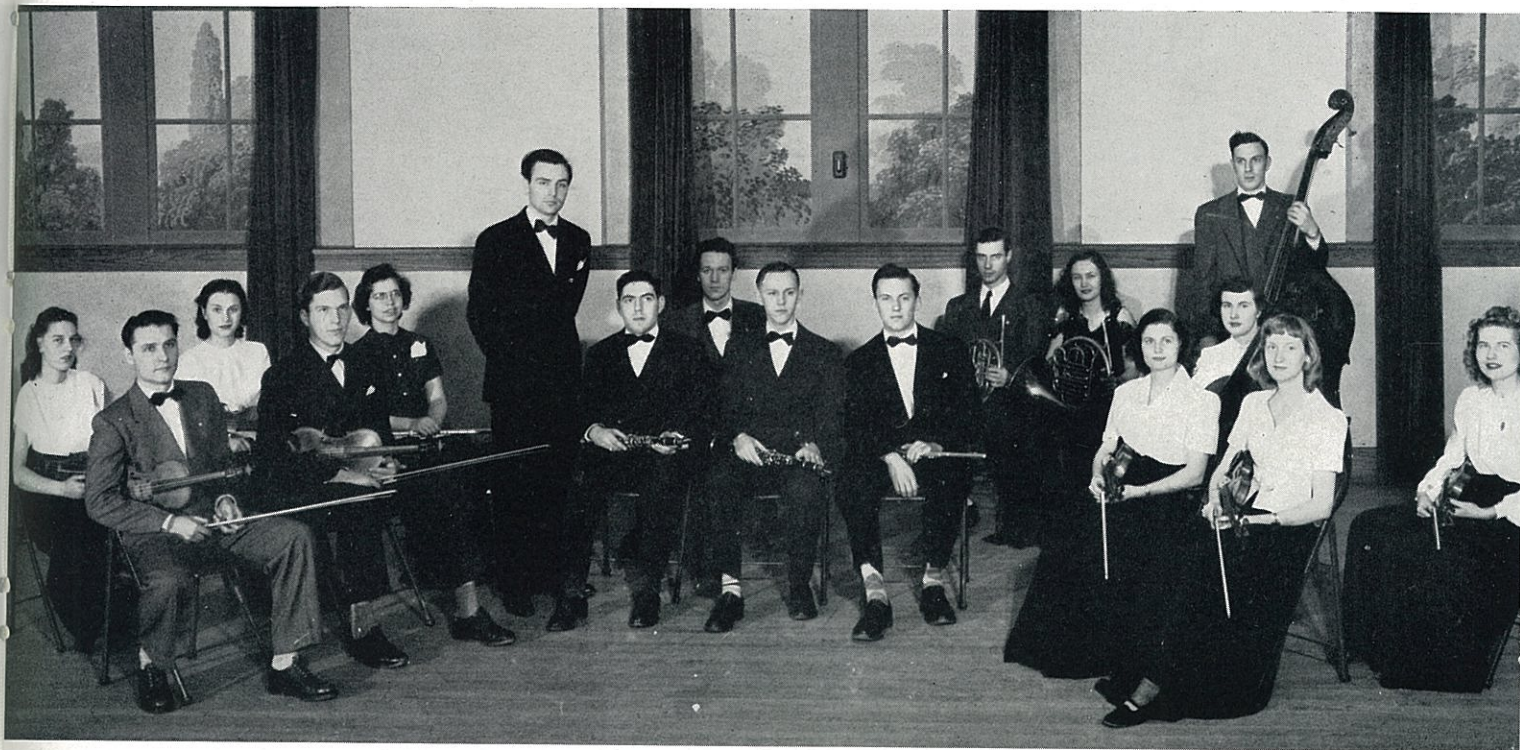
BACK ROW: Jack Bonam, Arthur White, Norm Garrett, Dave Heisler, Ralph Schriempf, Gordon Ward, James Limbacher, James Asmus, Roy Riems, Russell Aufrance, Lewis Byrne, Eugene Superko.

ons a tour was
nto Canada and
roved very suc-
of better things

took time out for social gatherings. Although the University Orchestra was very new it steadily grew in worth and popularity.

Officers for 1947 included Howard Micken, president; James Dunn, vice-president; Patricia Sanguinetti, secretary; Jean Graham, treasurer; and Monroe Rappaport, librarian. The orchestra was under the direction of William D. Alexander.

University Orchestra



FRONT ROW: Howard Mickens, Jim Dunn, William D. Alexander, Monroe Rappaport, Glenn Walker, Ben Langell, Ethel Marie Hall, Jean Graham.

BACK ROW: Mari May, Patricia Sanguinetti, Marion Payne, Richard Chadwick, Paul Sackett, Gloria Billett, Robert Borought, Nancy Baughman, Marcia Lemmerman.

The University Orchestra was reorganized this year after being inactive for the past two years. Also the first orchestra concert in four years was presented by the group. The orchestra started with four members and has grown to an organization of over thirty members.

The main purposes of the organization have been to provide a source for soloist material, and to give good performances.

The highlight of the orchestra's work this year was the concert in which Beethoven's First Symphony was featured. Talented students and faculty members were featured soloists.

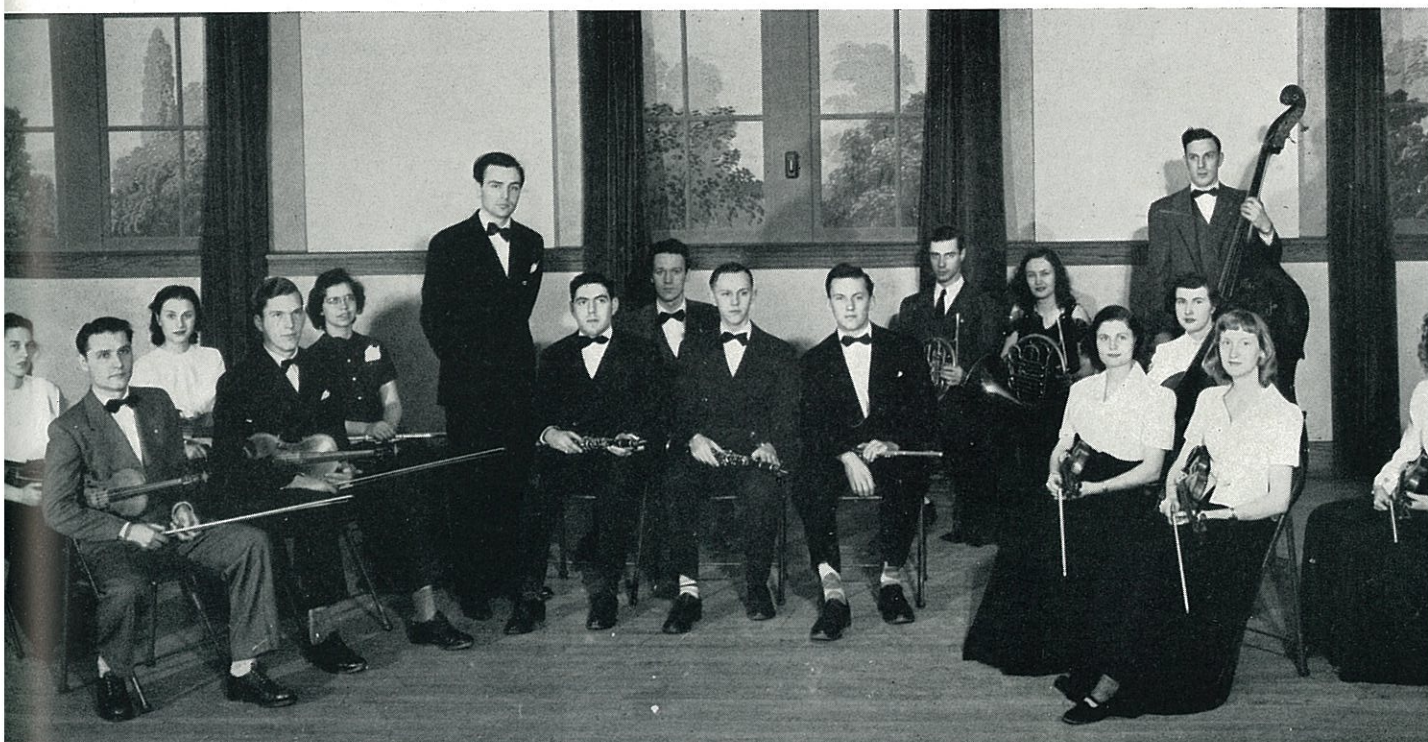
Proving that the organization was not "all work and no play" the members occasionally took time out for social gatherings. Although the University Orchestra was very new it steadily grew in worth and popularity.

Officers for 1947 included Howard Micken, president; James Dunn, vice-president; Patricia Sanguinetti, secretary; Jean Graham, treasurer; and Monroe Rappaport, librarian. The orchestra was under the direction of William D. Alexander.



Last minute tune up.

University Orchestra



FRONT ROW: Howard Mickens, Jim Dunn, William D. Alexander, Monroe Rappaport, Glenn Walker, Ben Langell, Ethel Marie Hall, Jean Graham.
BACK ROW: Mari May, Patricia Sanguinetti, Marion Payne, Richard Chadwick, Paul Sackett, Gloria Billett, Robert Boroughi, Nancy Baughman, Marcia Lemmerman.

The University Orchestra was reorganized this year after being inactive for the past two years. Also the first orchestra concert in four years was presented by the group. The orchestra started with four members and has grown to an organization of over thirty members.

The main purposes of the organization have been to provide a source for soloist material, and to give good performances.

The highlight of the orchestra's work this year was the concert in which Beethoven's First Symphony was featured. Talented students and faculty members were featured soloists.

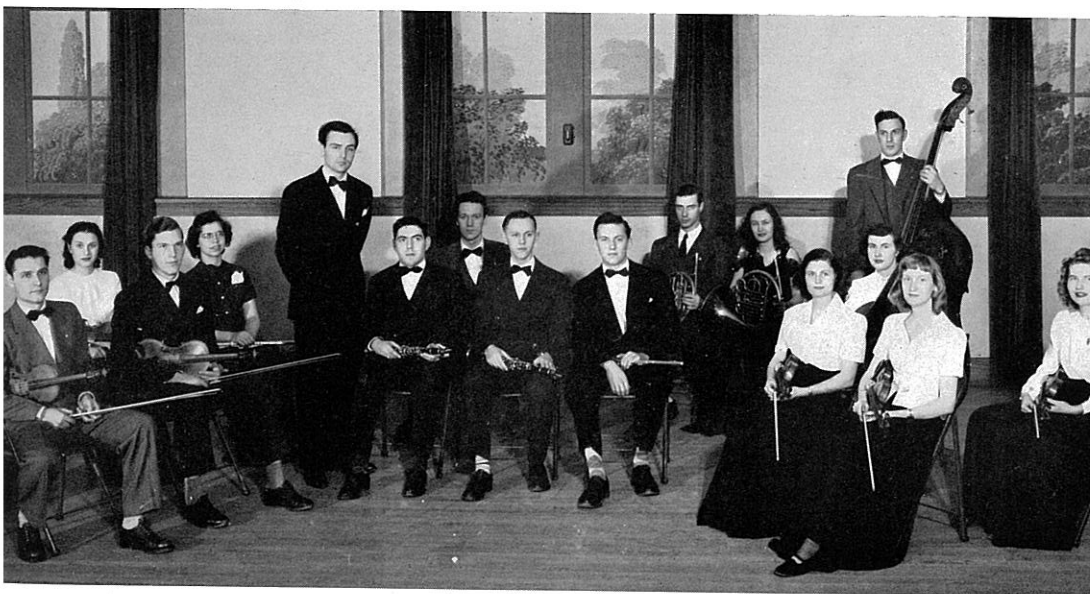
Proving that the organization was not "all work and no play" the members occasionally took time out for social gatherings. Although the University Orchestra was very new it steadily grew in worth and popularity.

Officers for 1947 included Howard Micken, president; James Dunn, vice-president; Patricia Sanguinetti, secretary; Jean Graham, treasurer; and Monroe Rappaport, librarian. The orchestra was under the direction of William D. Alexander.



Last minute tune up.

University Orchestra



FRONT ROW: Howard Mickens, Jim Dunn, William D. Alexander, Monroe Rappaport, Glenn Walker, Ben Langell, Ethel Marie Hall, Jean Graham.

BACK ROW: Mari May, Patricia Sanguinetti, Marion Payne, Richard Chadwick, Paul Sackett, Gloria Billett, Robert Boroughi, Nancy Baughman, Marcia Lemmerman.



FRONT ROW: Marjorie Lichty, Ruth Wonnell, Virginia McDarr, Kathleen Fischer.
 BACK ROW: Dorothy Ashbrook, Jeanette Lusk, Myrtle Jensen, Jean Meek.

Phi Sigma Mu



Four hands are better than two.

Phi Sigma Mu, national music educational honorary, was under the able direction of president Virginia McDarr and faculty advisor Miss Myrtle Jensen for the year 1947.

To be eligible for membership a student was required to be a music major and attain a 3.0 average the first semester of his sophomore year.

Before the opening of school in September a national convention was held by the honorary fraternity to acquaint music educators with the new methods of teaching music. Two members of the Bowling Green chapter attended this convention which was held in Interlochen, Michigan.

Social events of Phi Sigma Mu included a formal dinner and a picnic. Both events were held for students and faculty of the music department.

Other officers for 1947 were: Kathleen Fisher, vice-president; Jeanette Lusk, secretary; and Marjorie Lichty, treasurer.



FRONT ROW: Shirley Figgins, Pat Musolf, Beverly Heilman, Jean McKelvy, Mary Jean Bell, Carol Orthwein, Dena Mulop, John Paul Kennedy, Roberta Kester, Ruth Wonnell, Mary Jo Werner, Jo Ann Harrah, Ruth Wilson, Louise Stalbohm, Agnes C. Glenna Abrams.

SECOND ROW: Virginia Cerny, Christine Bollinger, Emalu Kohler, Lois Goodnight, Norma Burt, Margery Jones, Marilyn W. Ruth Berger, Helen Burdo, Alice Elton, Joan Syvertsen, Doris Smart, Arlene Lister, Anita Chase, Margaret Carter, Daisy C. Pivacek, Mary Baldauf.

THIRD ROW: Jean Meek, Lelah Shepard, Janice Smith, Lillian Gray, Ellen Treece, Peggy Ann Baringer, Mary Tomlinson, Paxton, Velma Bisher, Dorothy Starin, Marj Cochrane, Marylou Beagle, Marjorie Lichty, Connie Praeger, Betty Steele.

FOURTH ROW: Eleanor Ghinder, Jessie Graf, Joy Crockett, Grace Squires, Jeanette Lusk, Mary Lyon, Janice Miller, Ruth Dit Ruth Lyon, Barbara Osmun, Clarice Forney, AvaLoo Dressler, Veda Burkley, Elizabeth McCullough, Kathryn Giviskos.

BACK ROW: Lucille Richard, Katherine Mueller, Jeanalice Wolfe, Phyllis Greenler, Evangeline Charlesworth, Fannie Sn Jean Hadswell, Leona Krill, Beatrice Gilmer, Lois Headington, Elaine Lewis, Virginia Hadsell, Janice George, Letha Fledderjoh Suzanne Robinson, Nannette Sandridge.

Treble Clef

Among the advanced campus vocal organizations, Treble Clef has the distinction of being the first group organized.

Treble Clef's first concert of this year was presented in Bowling Green. Before the concert the society's traditional breakfast was held at the Women's Club.

During the Christmas season the members joined their voices with the other vocal organizations to present the annual Christmas Concert. One week later they added their voices to a mixed chorus that gave Handel's "Messiah."

Treble Clef's first out-of-town trips were made in March when the group sang in Tiffin, Perrysburg, Woodville, and Cleveland. The crowning point of the year was the ten-day trip to Florida. They sang in different states en route, but the stay in Florida proved the most exciting.

Officers for 1947 included Janice Smith, president; Katherine Mueller, secretary; Betty Tomlinson, business manager; Norma Jean Burt, publicity; Mary Tomlinson, librarian; and Connie Praeger, stage manager. Accompanists Marjorie Lichty and Janice George. Dr. John Paul Kennedy was the director of the group.



Beginning of an enjoyable trip.

- 241—ELEMENTARY MATHEMATICS (3) GRYTING
Elementary mathematics as a part of human culture and of modern society, as the science of numbers, as a mode of thinking, and as a tool. (1, 2)
- 242—ELEMENTARY MATHEMATICS (3) GRYTING
A continuation of Mathematics 241. Prerequisite: Mathematics 241. (2)
- *302—PLANE AND SOLID ANALYTIC GEOMETRY (3) OGG
The general equation of the second degree and solid analytic geometry. Prerequisites: Mathematics 102, 104, and solid geometry or Mathematics 98. Offered in 1947-48 and in alternate years. (2)
- *311—HISTORY OF MATHEMATICS (2) GRYTING
History of mathematics through the calculus. Prerequisite or parallel: Mathematics 201. (1)
- *403—THEORY OF EQUATIONS (3) OGG
Selected advanced topics in algebra. Prerequisite: Mathematics 202. (1)
- *404—NON-EUCLIDEAN GEOMETRY (3) OGG
Foundations of geometry. History of parallel postulate. Principal theorems. Prerequisite: Mathematics 202. (2)
- *405—ELEMENTARY PROJECTIVE GEOMETRY (3) OGG
Fundamental theorems of projective geometry. Euclidean geometry as a portion of the larger field. Prerequisite: Mathematics 202. Offered in 1947-48 and in alternate years. (1)
- *407 (401)—ORDINARY DIFFERENTIAL EQUATIONS (3) KRABILL
Ordinary differential equations with applications. Prerequisite: Mathematics 202. (1)
- *408—PARTIAL DIFFERENTIAL EQUATIONS (3) KRABILL
Partial differential equations with applications. Prerequisite: Mathematics 407. (2)
- *409 (402)—ADVANCED CALCULUS (3) KRABILL
Selected topics in advanced calculus. Prerequisite: Mathematics 202. Offered in 1948-49 and in alternate years. (1)
- *410—ADVANCED CALCULUS (3) KRABILL
Continuation of Mathematics 409. Prerequisite: Mathematics 409. Offered in 1948-49 and in alternate years. (1)
- *498—RESEARCH TECHNIQUES (1) SHUCK†
An applied study of form and bibliographical practices in writing research papers and theses. Credit for this course is prerequisite to registration for work on the master's thesis. (1)
- **510—FUNCTIONS OF A COMPLEX VARIABLE (3) KRABILL
An introductory course in higher analysis. Offered on demand

** Courses 510, 511, 520, and 521 are required of all candidates for the master's degree who major in mathematics. At least three of these courses must be presented for a minor.

† Department of English

- **511—FUNCTIONS OF A COMPLEX VARIABLE (3) KRABILL
A continuation of Mathematics 510. Prerequisite: Mathematics 510. Offered on demand
- **520—MODERN ALGEBRA (3) OGG
An introductory course in higher algebra. Offered on demand
- **521—MODERN ALGEBRA (3) OGG
A continuation of Mathematics 520. Prerequisite: Mathematics 520. Offered on demand
- 530—ALGEBRAIC GEOMETRY (3) OGG
Plane algebraic curves, transformations, and invariants. Offered in summer term.
- 531—ALGEBRAIC GEOMETRY (3) OGG
Curves and surfaces in three dimensions, transformations, and invariants. Offered in summer term.
- 540—THEORY OF GROUPS (3) OGG
Finite groups. Applications to algebra and geometry. Offered in summer term.
- 541—THEORY OF GROUPS (3) OGG
A continuation of Mathematics 540. Prerequisite: Mathematics 540. Offered in summer only.
- 599—MASTER'S THESIS (3) GRADUATE STAFF
Students working upon their master's theses in mathematics are required to register for this course. Prerequisite: Mathematics 498. (1, 2)

Music

Professor McEwen (chairman); Associate Professor Kennedy; Assistant Professors Allen, Fauley, Jensen, Yates; Instructors Alexander, Ono, Pitman, Troeger, Zuelzke; Mrs. Derrer, Mr. McLaughlin.

COURSES IN THEORY, HISTORY, AND APPRECIATION

- *101—SIGHT SINGING AND EAR TRAINING (2) ALEXANDER
Fundamental principles of pitch and rhythm as a basis for solfeggio. Dictation for oral and written response. Four hours a week. (1)
- *102—SIGHT SINGING AND EAR TRAINING (2) ALEXANDER
A continuation of Music 101. Four hours a week. Prerequisite: Music 101. (2)
- *103—NOTATION AND THEORY (2) ALEXANDER
Elementary theory, notation, scales, key signatures, clefs, intervals, triads, and chords of the seventh and ninth. Three hours a week. Course 101 must be taken as parallel. (1)

** Courses 510, 511, 520, and 521 are required of all candidates for the master's degree who major in mathematics. At least three of these courses must be presented for a minor.

- *104—MELODY WRITING AND ELEMENTARY FORM (2) ALEXANDER
Tone tendencies. Melodies in the smallest forms from the motive through the three-part song forms. Three hours a week. Prerequisite: Music 103. Course 102 must be taken as parallel. (2)
- *201—SIGHT SINGING AND EAR TRAINING (2) ALEXANDER
Prepared and sight-reading of advanced choral material. Melodic and harmonic dictation. Four hours a week. Prerequisite: Music 102. (1)
- *202—SIGHT SINGING AND EAR TRAINING (2) ALEXANDER
A continuation of Music 201. Four hours a week. Prerequisite: Music 201. (2)
- *205 (206)—HARMONY (2) JENSEN
Four-part writing, harmonic dictation, keyboard. Prerequisite: Music 104 or equivalent. (1)
- *206—HARMONY (2) JENSEN
A continuation of Music 205. Prerequisite: Music 205. (2)
- 211 (241)—GENERAL MUSIC (2) STAFF
Fundamental musical skills, reading by syllable, pitch and rhythm dictation, music appreciation, song singing. Four hours a week. (1)
- 212 (242)—GENERAL MUSIC (2) STAFF
A continuation of Music 211. Four hours a week. Prerequisite: Music 211. (2)
- *301—CHORAL LITERATURE (1) ALLEN
Reading and study of sacred and secular choral music from 16th to 20th century. Two hours a week. Prerequisite: Music 202. (1)
- *303—HARMONY (2) JENSEN
Principal, subordinate, altered and mixed chords. Nonchordal tones, modulation, contrapuntal harmony. Keyboard improvisation. Prerequisite: Music 206. (1)
- *304 (205)—ANALYSIS OF FORM (2) JENSEN
Analysis of the larger forms of musical composition. Prerequisite: Music 303 or equivalent. (2)
- *305—HISTORY AND APPRECIATION (3) JENSEN
General course. Readings, reports, recorded music. Survey of all periods. (1)
- *306—HISTORY AND APPRECIATION (3) JENSEN
A continuation of Music 305. Prerequisite: Music 305. (2)
- *307—CONDUCTING (1) ZUELZKE
Fundamental principles of conducting. Practice in conducting ensemble music. Two hours a week. (1)
- *311—CHORAL LITERATURE (1) ALLEN
Reading and study of cantatas, oratorios, and other choral compositions, classical and modern. Two hours a week. Prerequisite: Music 202. (1)
- *315—INSTRUMENTATION (2) McEWEN
Scoring for instrumental choirs and ensembles, full orchestra and band. Prerequisite: Music 304. (1)

- *316—COMPOSITION (2) KENNEDY
Original composition in songs and instrumental forms. Prerequisite: Music 304. (2)
- *317—MUSIC APPRECIATION (2) McEWEN
Enjoyment and understanding of music. Hearing, lecture, and participation. Not open to special music students or to those having credit for Music 305 or 306. Laboratory fee, \$2.00. (1, 2)
- *318—SYMPHONIC LITERATURE (1) KENNEDY
A hearing course in the larger standard instrumental works. Intended primarily for students taking Public School Music course. Prerequisite: Music 205. Prerequisite or parallel: Music 305 and 306. Laboratory fee, \$2.00. (1)
- *319—SYMPHONIC LITERATURE (1) KENNEDY
A continuation of Music 318. Laboratory fee, \$2.00. (2)

COURSES IN MUSIC EDUCATION

- 203—INTRODUCTION TO PUBLIC SCHOOL MUSIC (1) McEWEN
Purpose and place of music in the general scheme of education. Two hours a week. (1)
- 204—INTRODUCTION TO PUBLIC SCHOOL MUSIC (1) McEWEN
A continuation of Music 203. Prerequisite: Music 203. (2)
- 313—SPECIAL PROBLEMS (1) FAULEY
Choice of various problems in music education. Conducted under supervision. (1)
- 314—SPECIAL PROBLEMS (1) FAULEY
A continuation of Music 313. (2)
- 351—TEACHING OF MUSIC (2) FAULEY
Methods in music for students in Elementary Education Curriculum. Four hours a week. Prerequisite: Music 242. (1)
- 352—METHODS IN MUSIC APPRECIATION (2) McEWEN
The basis of music appreciation. Subject matter and methods. Preparation and teaching typical lessons. Prerequisite: Education 309. (2)
- 355—METHODS IN SECONDARY MUSIC (2) FAULEY
Subject matter and materials for music in the junior and senior high schools. Prerequisites: Education 309, 310. (1)
- 357—METHODS AND MATERIALS IN INSTRUMENTAL MUSIC (2) ZUELZKE
For elementary and secondary schools. (2)

COURSES IN APPLIED MUSIC

FEES—A fee of \$20.00 per semester is charged for each course in Applied Music except Courses 125, 135, 145, 185, and 186. A fee of \$3.00 per semester for use of a piano six hours a week, and a fee of \$5.00 each per semester for brass wind,

wood wind, and stringed instruments is charged when provided by the University. Fees for organ practice are \$10 per semester for 6 hours a week for University students taking organ credit, 25 cents per hour of practice for all others.

CREDIT REQUIREMENT—The amount of Applied Music required for students in Public School Music varies from 12 to 18 hours, depending upon ability and previous training. Other students may elect courses in Applied Music with the approval of the chairman of the department and the dean.

INSTRUCTION—The basis for instruction in all Applied Music except Courses 125, 135, 145, 185, and 186 is the half hour individual lesson. Work is graded according to the proficiency and experience of the student, and involves both technical study and standard performance literature. For students of Public School Music, attention is given to such special professional requirements as playing accompaniments and rhythms, and the proper use of the singing voice for teaching in the elementary and secondary schools. All courses except 125, 135, 145, 185, and 186 are offered on demand.

PRACTICE—A minimum of six hours of practice per week is required in piano and other instruments. In voice, three to five hours practice per week is required.

STUDENT RECITALS—Student recitals are held at regular intervals.

*125—PERCUSSION CLASS (1)	STAFF
*135—BRASS CLASS (1)	PITMAN
*145—WOODWIND CLASS (1)	ZUELZKE
*185-186—STRING CLASS (2)	ALEXANDER
*131, *132, *231, 232, *331-334—BRASS INSTRUMENTS (1 each)	PITMAN
*141, *142, *241, *242, *341-344—WOODWIND INSTRUMENTS (1 each)	ZUELZKE
*161, *162, *261, *262, *361-364—PIANO (1 each)	JENSEN, KENNEDY, TROEGER, YATES
*171, *172, *271, *272, *371-374—VOICE (1 each)	ALLEN, FAULEY, KENNEDY, ONO
*181, *182, *281, *282, *381-384—STRINGED INSTRUMENTS (1 each)	ALEXANDER, DERRER, McLAUGHLIN
*191, *192, *291, *292, *391-394—ORGAN (1 each)	JENSEN

MUSICAL ORGANIZATIONS

100—SMALL ENSEMBLES (1 a semester) STAFF
According to the talent available, small vocal and instrumental ensembles are formed under the supervision of the department. Admission is by try-out. May be taken more than once, but the total credit earned shall not exceed 4 hours. (1, 2)

200—MUSICAL ORGANIZATIONS (½ a semester) STAFF
The Band, Festival Chorus, under-class A Cappella Choir, upper class A Cappella Choir, Men's Glee Club, Orchestra, and Treble Clef Club are open to all students of the University with the necessary musical ability. No credit is allowed for the first two semesters in any organization. Not more than four hours earned in this way can be applied to any degree. (1, 2)

300—SMALL ENSEMBLES (1 a semester) STAFF
Similar to Music 100, but for juniors and seniors, may be taken more than once, but the total credit earned shall not exceed 4 hours. (1, 2)

Orientation

101—ORIENTATION (0)
Personality development and personal adjustment to college environment. The college curriculum, study methods, time and expense budgets, mental and physical hygiene, etiquette, extra-curricular activities, and vocational interests. Required of all freshmen during their first semester. Laboratory fee, 50 cents. (1, 2)

Philosophy

Associate Professor Tuttle (acting chairman).

***201—INTRODUCTION TO PHILOSOPHY (3)** TUTTLE
A study of the methods and problems of philosophy in relation to contemporary institutions. (1, 2)

***202 (302)—ETHICS (3)** TUTTLE
A study of the nature and meaning of "Good," and its application in business, professional, personal, and social attitudes and behavior. Offered in 1948-49 and alternate years. (N)

***204—AESTHETICS (3)** TUTTLE
The nature and meaning of "Beauty," approached historically and applied to present date experience. Courses in the appreciation and history of art and music are of value in connection with this study. Offered in 1947-48 and alternate years. (2)

***301—LOGIC (3)** TUTTLE
A survey of the principles and problems of correct thinking, with emphasis on Mill's methods and the function of logic in pre-law, and the social and natural sciences. (1)

***311—TYPES OF PHILOSOPHY (3)** TUTTLE
A study of contemporary realism, idealism, pragmatism, and mysticism with emphasis on their applications to today's educational, economic, religious, and social problems. Prerequisite: Philosophy 201. (1)