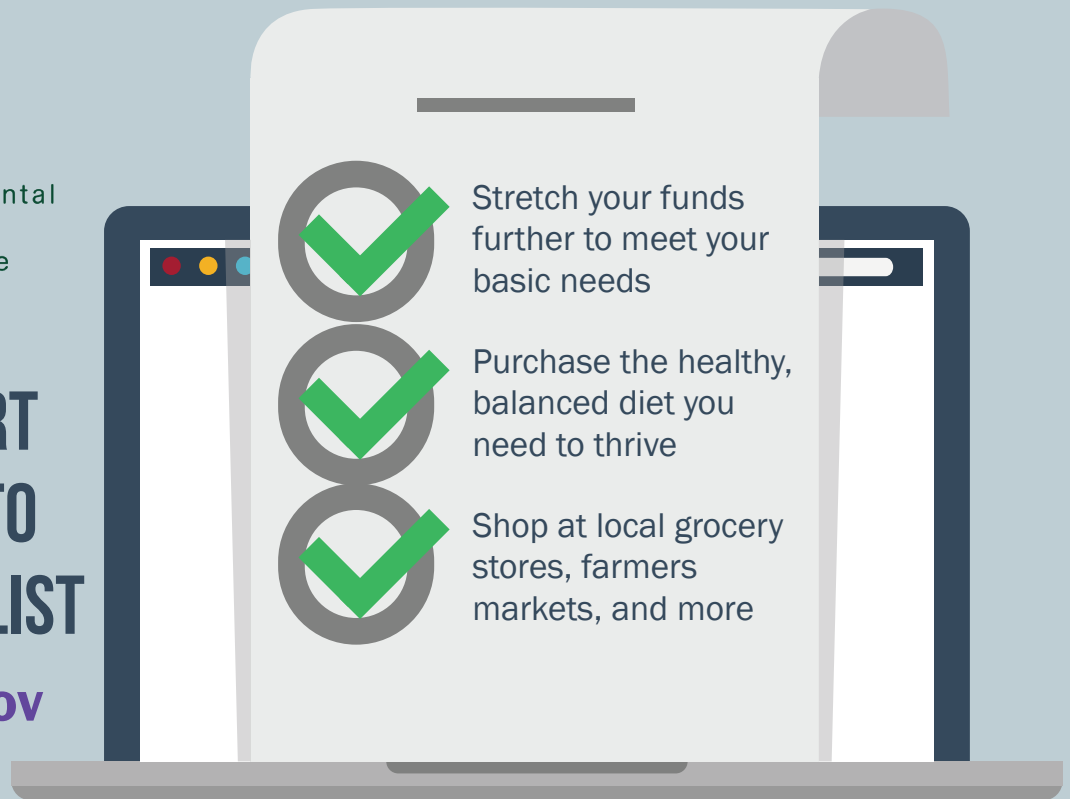




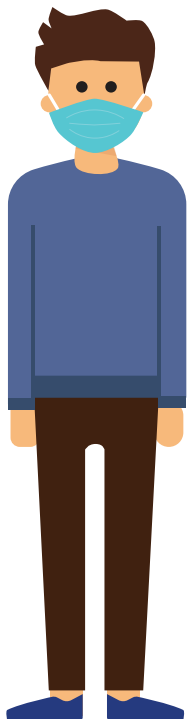
Supplemental
Nutrition
Assistance
Program

MAKE SNAP PART OF YOUR BACK TO SCHOOL CHECKLIST

benefits.ohio.gov



If you have an Expected Family Contribution (EFC) of \$0 on your most recent FAFSA, or if you are eligible for work study, even if you are not participating, you may be eligible for \$234 per month or more in SNAP!



Your household income and other circumstances may impact your eligibility.

To learn more and apply for \$234 or more per month in funds to buy groceries, visit **benefits.ohio.gov**.

